



Authorize a Permanent Easement to Fondomonte California LLC

Real Property & Asset Management Committee
Item 7-3
March 9, 2021

Distribution and Conveyance Map



Palo Verde Valley

N

San Bernardino

Los Angeles

Ventura

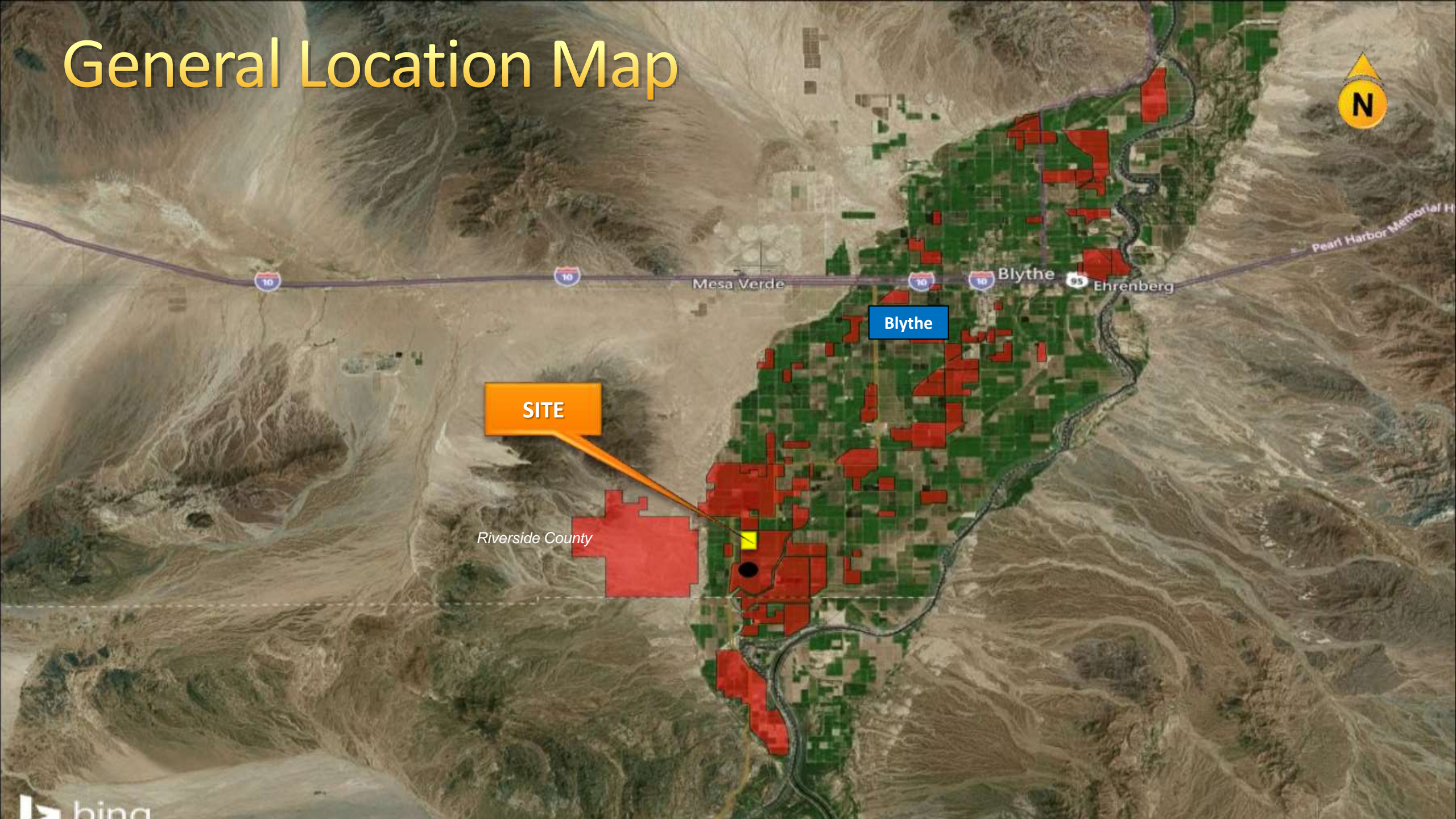
Orange

Riverside

San Diego

Imperial

General Location Map

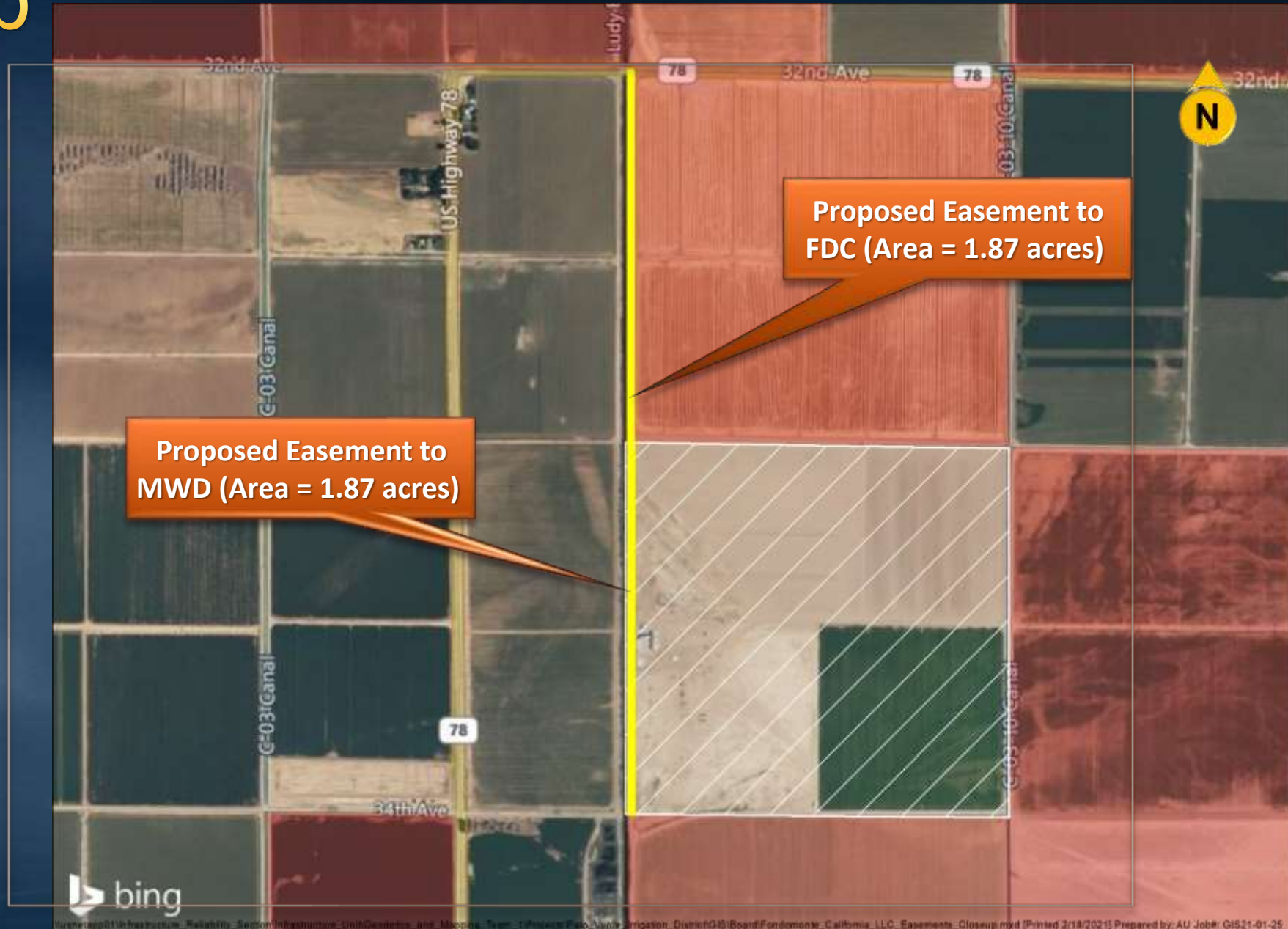


SITE

Blythe

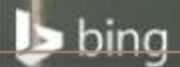
Riverside County

Site Map



Proposed Easement to
MWD (Area = 1.87 acres)

Proposed Easement to
FDC (Area = 1.87 acres)



\\santago01\Infrastructure_Reliable_Section\Infrastructure_Support\GIS\Maping_Team_1\Projects\Fed_Vario_Irrigation_District\GIS\Board\Fordomona_California_LLC_Easements_Closeup.mxd [Printed 2/18/2021] Prepared by: AU Job#: GIS21-01-25

Key Provisions

- Metropolitan's paramount rights preserved
- Fondomonte would be required to maintain the easement area
- Any modifications require Metropolitan's approval
- Fondomonte would be required to defend, indemnify, and hold harmless Metropolitan

Board Options

- Option #1
 - Authorize the General Manager to exchange access easements with Fondomonte California LLC, subject to paramount rights, maintenance and other provisions.
- Option #2
 - Do not authorize the exchange of access easements.

Staff Recommendation

- Option #1

