



Encroachment Prevention Update

Real Property & Asset Management Committee

Item 6-b

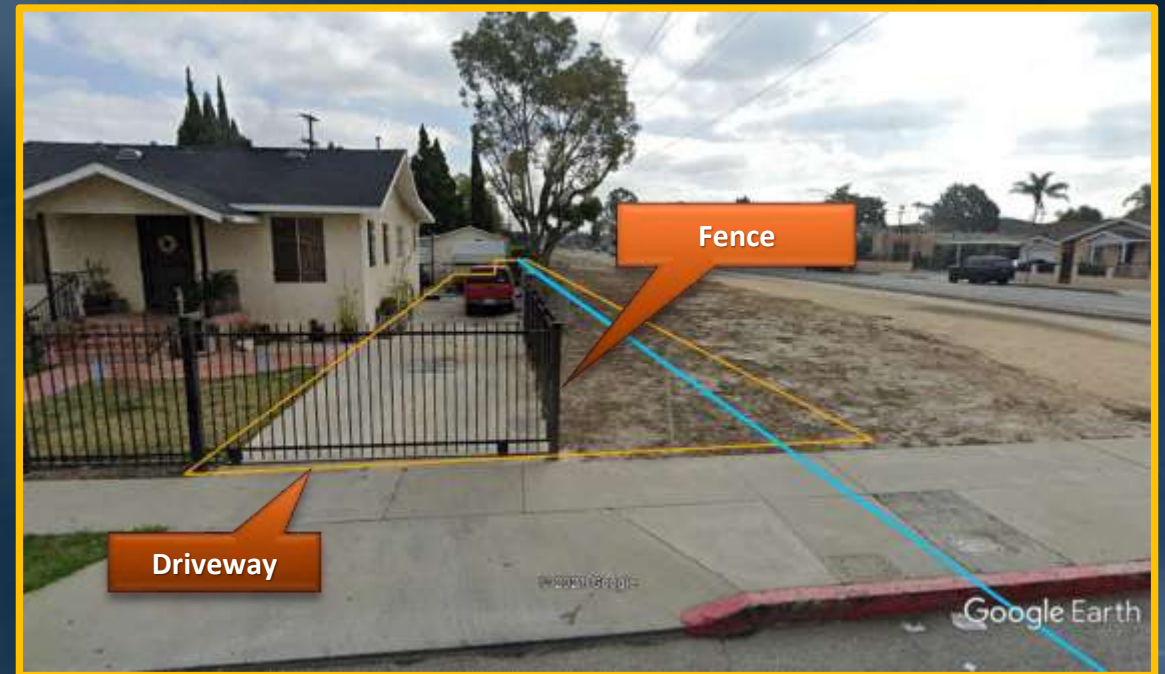
March 9, 2021

Overview

- Definition
- Resolution Process
- Progress

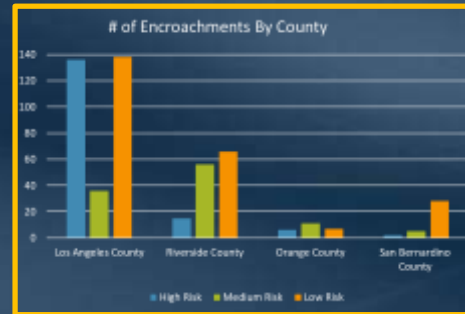
Encroachment Definition

Any situation in which a person or entity trespasses or uses Metropolitan's fee property without consent, prior rights, or interferes with Metropolitan's ability to use its easements.

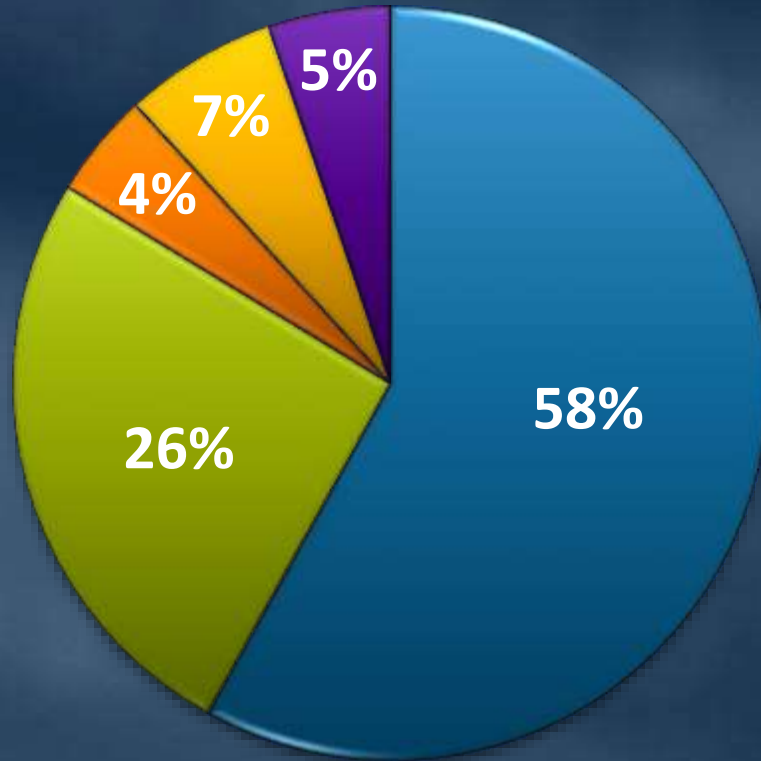


Encroachment Resolution Process

- Research
- Ranking
- Notification
- Resolution



Potential Encroachments By County:



County	High	Medium	Low	TOTAL
Los Angeles	136	36	138	310
Riverside	15	56	66	137
Orange	6	11	7	24
San Bernardino	2	5	28	35
San Diego	1	10	16	27
Total	160	118	255	533

Eagle Valley

