



Water System Operations Manager's Report

Engineering and Operations Committee

Item 7a

March 8, 2021

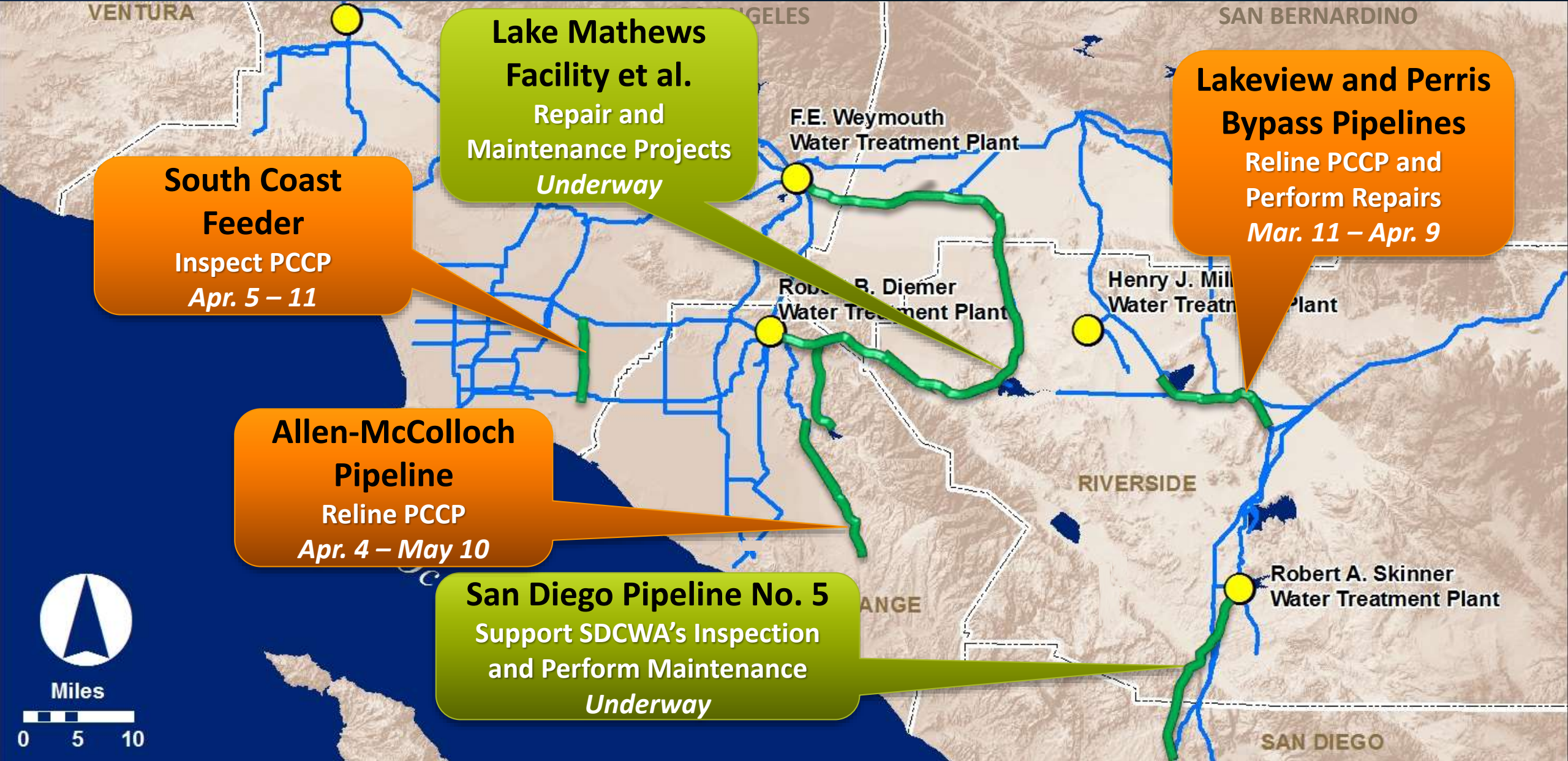
Current Operational Conditions

- 2021 SWP Allocation is 10%
- SWP blend targets are 100% at the Weymouth and Diemer plants during the Lake Mathews Shutdown
- SWP blend target is 0% at the Skinner plant
- CRA is at a 7-pump flow
- Managing storage based on WSDM principles
- February 2021 deliveries of 98 TAF were 7 TAF more than February 2020

Dry-Year Actions Underway

- Minimizing deliveries of SWP supplies (except for needed shutdown activities)
- Pumping Flex Storage from Lake Perris to Mills plant in February and March
- Began withdrawals from SWP Banking Programs on March 1
- Discussing potential water transfers with the State Water Contractors

Ensuring Continued System Reliability



South Coast Feeder
Inspect PCCP
Apr. 5 – 11

Lake Mathews Facility et al.
Repair and Maintenance Projects
Underway

Lakeview and Perris Bypass Pipelines
Reline PCCP and Perform Repairs
Mar. 11 – Apr. 9

Allen-McColloch Pipeline
Reline PCCP
Apr. 4 – May 10

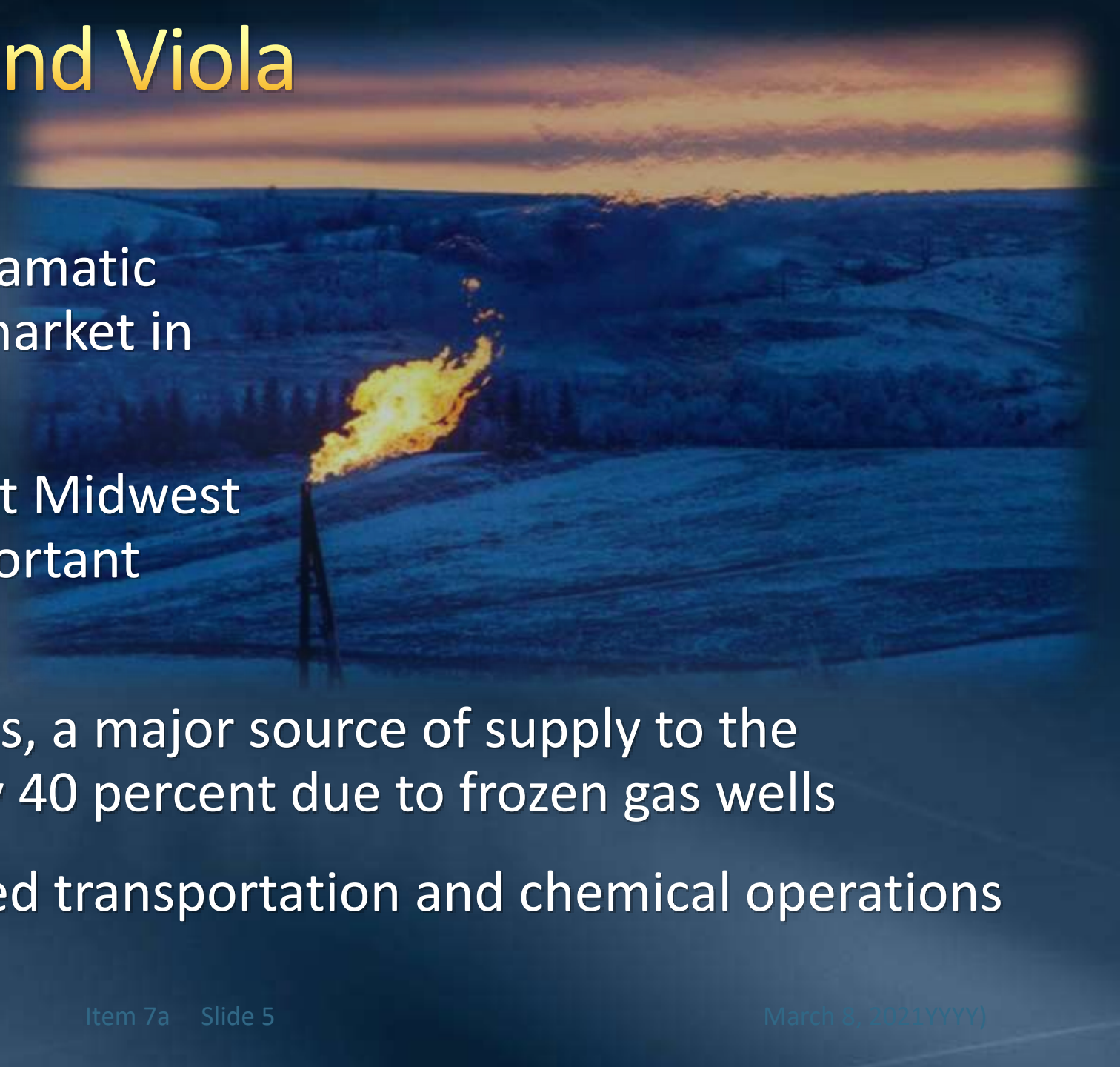
San Diego Pipeline No. 5
Support SDCWA's Inspection and Perform Maintenance
Underway



Winter Storms Uri and Viola

February 13-20, 2021

- Strong winter storms had dramatic impact on national energy market in February
- Storms extended throughout Midwest and deep into Texas, an important energy producing region
- Gas production in west Texas, a major source of supply to the western US, was reduced by 40 percent due to frozen gas wells
- Weather conditions impacted transportation and chemical operations in the Gulf region



Winter Storms Uri and Viola

- Rolling blackouts in Midwest, Texas, and northern Mexico
 - Loss of gas supply and extreme cold temperatures impacted gas-fired generators
 - Icy conditions impacted wind generation
- Texas system operator (ERCOT) cut power to 4.5M people
- Natural gas and electricity markets in western US saw extreme and highly unusual price spikes
 - Gas supplies to California were reduced by 20% and California gas prices spiked from \$3-4 MMBtu* to almost \$180 MMBtu



*MMBtu – Million British Thermal Units
E&O Committee

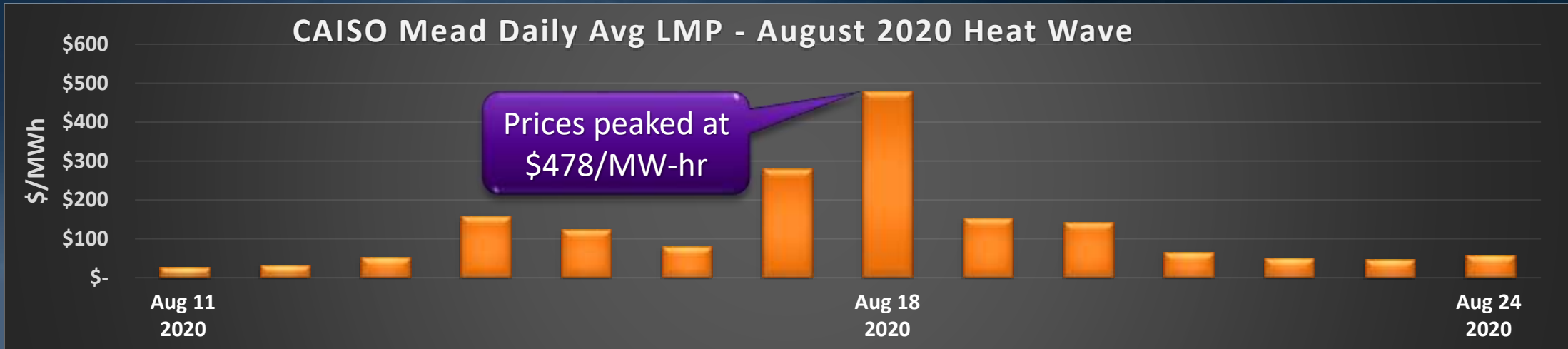
Winter Storms Uri and Viola

Metropolitan Actions

- Metropolitan adjusted Hoover power schedules providing more energy to the CAISO grid while gas supplies imported to California were reduced
 - Helped reduce need for gas-fired generation in California and withdrawal of gas from local storage
 - With CRA shutdown in February, these actions did not impact Metropolitan operations
- Some of Metropolitan's chemical providers were impacted, but adequate supplies were on hand and backup facilities were available for deliveries

Recent Extreme Weather Events

High natural gas prices drove electricity costs to nearly summer 2020 levels



LMP = Locational Marginal Prices: Price in the day ahead market at Mead shown

Commitment to Field Safety



- 2021 “Talk Safety With Me!” book now complete
- 52 toolbox topics reflecting Metropolitan safety policies and procedures
- Copies available upon request

