



Adopt CEQA Determination and Resolution for 52nd Fringe Area Annexation to Western MWD and Metropolitan

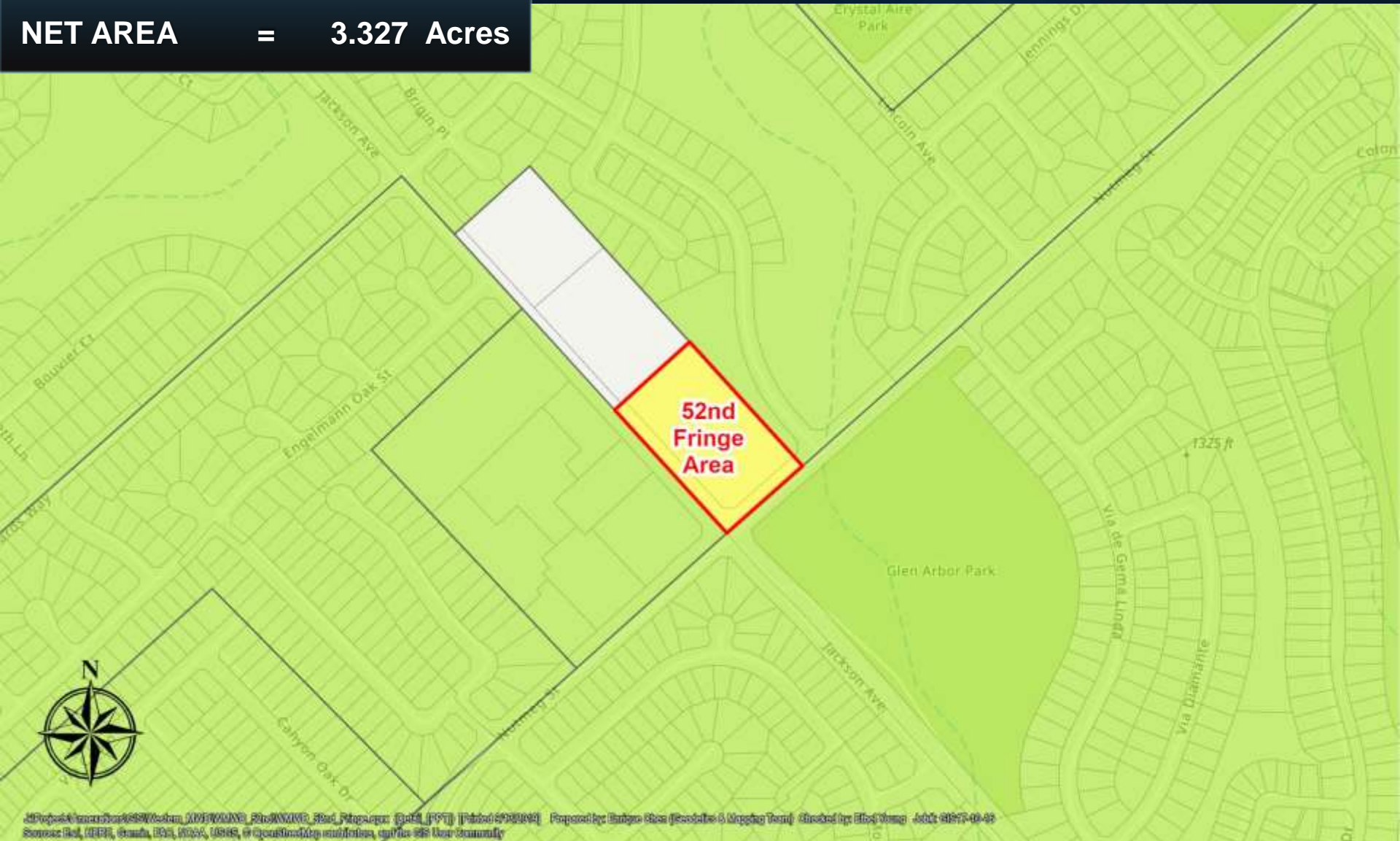
Finance & Insurance Committee
Item 7-2
October 7, 2019

**Item # 7-2
52nd Fringe Area Annexation
To Western & Metropolitan**



J:\Projects\Annexations\GIS\Western_MWD\MMWD_52nd\MMWD_52nd_Fringe.aprx (Vicinity_IPPT) [Printed 9/13/2019] Prepared by Enrique Chen (Geodetics & Mapping Team) Checked by: [Name] [Date]
Sources: Esri, Airbus DS, USGS, NGA, NASA, CGIAR, N Robinson, NCEAS, NLS, OS, NMA, Geodatasysteisen, Rijkswaterstaat, GSA, Geoland, FEMA, Intermap and the GIS user community

GROSS AREA = 4.000 Acres
PUBLIC ROAD = 0.673 Acres
NET AREA = 3.327 Acres



©Project number 1919/William KIRKLAND, Planning, Real Estate (P&RE) [Phone: 609-894-1111] Prepared by Bridge Sites (Resales & Mortgage Term) Checked by Eric Young - Job# 1919-00-05
Source: Aerial, DEPT, Census, GIS, NOAA, USGS, & Geographic information on the GIS User Community

Summary

Annexation	Proposed Land Use	Acres	Annexation Charge	Increased Demand Upon Metropolitan (acre feet/yr)
52nd Fringe Area Annexation	Community Commercial Development	4.0	\$19,845.56	5.6
Processing Charge			\$ 5,000	
TOTAL		4.0	\$ 24,845.56	5.6 AFY

Board Options

- Option 1:

- Review and consider Lead Agency's adopted Mitigated Negative Declaration and take related CEQA actions, and adopt resolution for the 52nd Fringe Area Annexation concurrently to Western Municipal Water District and Metropolitan

- Option 2:

- Decline the request for the proposed 52nd Fringe Area Annexation

Staff Recommendation

- Option 1

