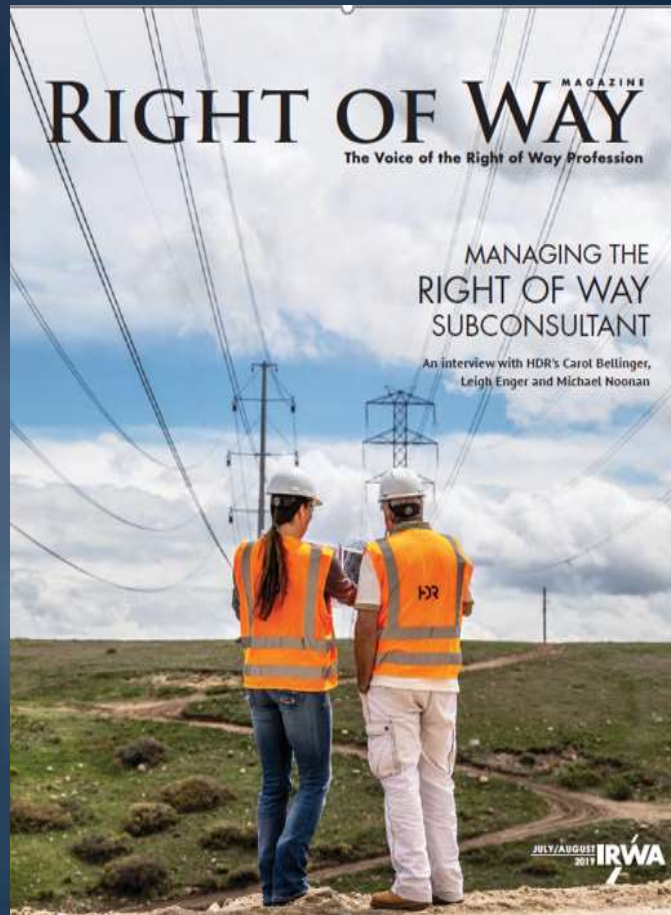




# Group Manager's Report

Real Property & Asset Management  
Item 7a  
September 10, 2019

# IRWA Publication



## STUDENT OUTREACH

### The Metropolitan Water District of Southern California Holds Annual Outreach Event



The Metropolitan Water District of Southern California, the winner of the 2018 Employer of the Year Award from IRWA Chapter 1, successfully held its 2<sup>nd</sup> annual spring student outreach event at its headquarters in Los Angeles. The focus of the event was an open forum panel discussion to introduce college students to the right of way industry and provide them with an opportunity to learn more about the practices of public agencies. It also promoted two student intern positions in Metropolitan's Real Property Group.

The event featured three panelists with extensive experience in right of way and public agency work: Lily Shraibati, Manager of Metropolitan's Real Property Group; Holly Rockwell, Senior Executive Officer in the Planning Department at Los Angeles County Metropolitan Transportation Authority; and David Graeler, an eminent domain attorney from Nossaman LLP representing the local IRWA Chapter 1 as a past president. The students were an eager bunch, full of sharp questions related to current projects, environmental concerns, news items and many more topics. Each of the panelists provided insightful information, exciting project updates and personal career anecdotes.

Attendees included close to 30 students from Southern California universities such as UCLA, Cal State Long Beach and Loyola Marymount University. After the forum, the event continued with networking. Representatives from Metropolitan's Human Resources Department assisted those interested in the intern positions and the External Affairs Manager shared Metropolitan's history through a virtual reality experience. Two representatives of the IRWA Young Professionals discussed the organization with students one-on-one.

# Student Interns

## ALONDRA ORN

**School:** University of California,  
Los Angeles

**Major:** Geography & Environmental  
Studies

Planning & Acquisition Unit

## MELISSA MOHR

**School:** University of California, Irvine

**Major:** Philosophy – Specialization in  
Law & Society, Statistics minor

Planning & Acquisition Unit

## BRIAN DE LA REE

**School:** Cal Poly Pomona

**Major:** Urban & Regional Planning

Facility Asset Management Unit

## BRANDON DUARTE

**School:** California State University,  
Los Angeles

**Major:** Mechanical Engineering

Facility Asset Management Unit

