



Disadvantaged Communities Program Update

Conservation and Local Resources Committee

Item 4b

May 14, 2019

Disadvantaged Communities Program

Three-part approach approved by Board in December 2018

Regional Pilot Program

Enhanced incentive for pre-1994 multi-family

Local Support for Agencies

For targeted DAC programs

Grant Funding Support

Assistance pursuing grants

Disadvantaged Communities Program

Three-part approach approved by Board in December 2018

Regional Pilot Program

Enhanced incentive for pre-1994 multi-family

Local Support for Agencies

For targeted DAC programs

Grant Funding Support

Assistance pursuing grants

Multi-family pre-1994: Regional pilot program

Launch

Date:

March 18

Extensive pre-launch outreach

- Apartment association publications
 - Digital advertisements
 - Provided sample article
- Coordinated with government affairs & business outreach staff
 - Contractors associations
 - Construction trades
- Attended member agency meetings
- Created customized materials for agencies

Advertising for the regional pilot program



ONLINE

For rebate eligibility details and requirements, visit socialwatersmart.com.

An advertisement for the Premium High-Efficiency Toilet Multifamily Regional Pilot Program. The ad features a white toilet on the right side. The text on the left side reads "PREMIUM HIGH-EFFICIENCY TOILET MULTIFAMILY REGIONAL PILOT PROGRAM" and "\$250 rebate per toilet". Below this, there are three bullet points: "SAVE WATER, EVERY DAY", "ACT NOW, funding is limited", and "Premium high-efficiency toilet must be installed in apartments built before 1994". At the bottom, it says "For eligibility details and requirements, visit socialwatersmart.com". There is also a small logo at the bottom right of the ad.

Pilot program boosts rebates for high-efficiency toilets in Southern California

Regional pilot program online application



Commercial
Rebates

bewaterwise.com

English | Commercial



Rebates

Water Savings Incentive Program

Retailer Tools

Contractor Resources

Contact Us



APARTMENT BUILT BEFORE 1994 PROGRAM

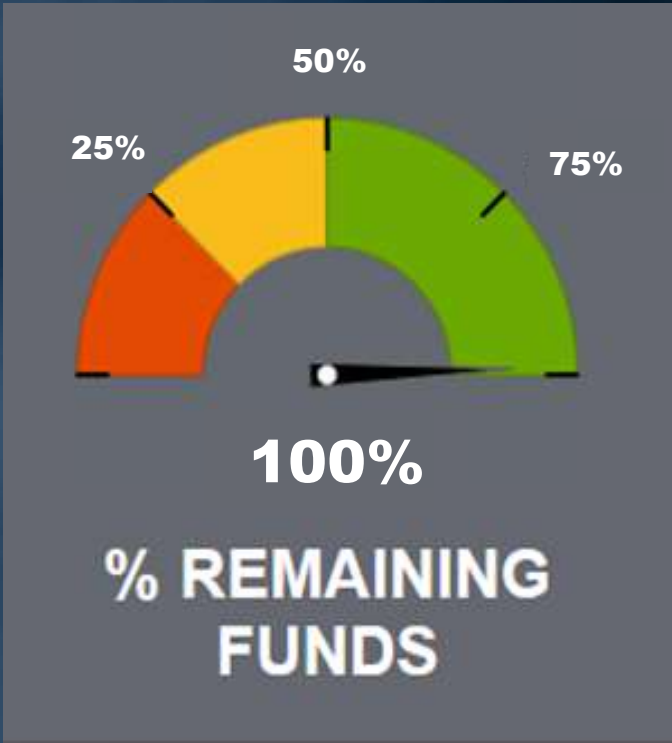
Metropolitan will offer a flat rate of \$250 per premium high-efficiency toilet (1.1 gallons per flush or less) installed in apartments built before 1994. Available until funds are exhausted.

[LEARN MORE](#)



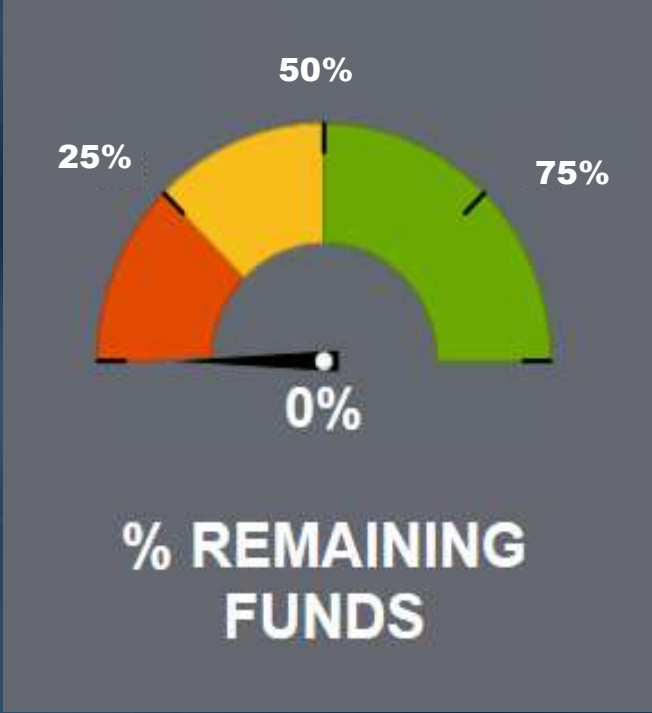
Program funding tracking tool

7:58:52 AM

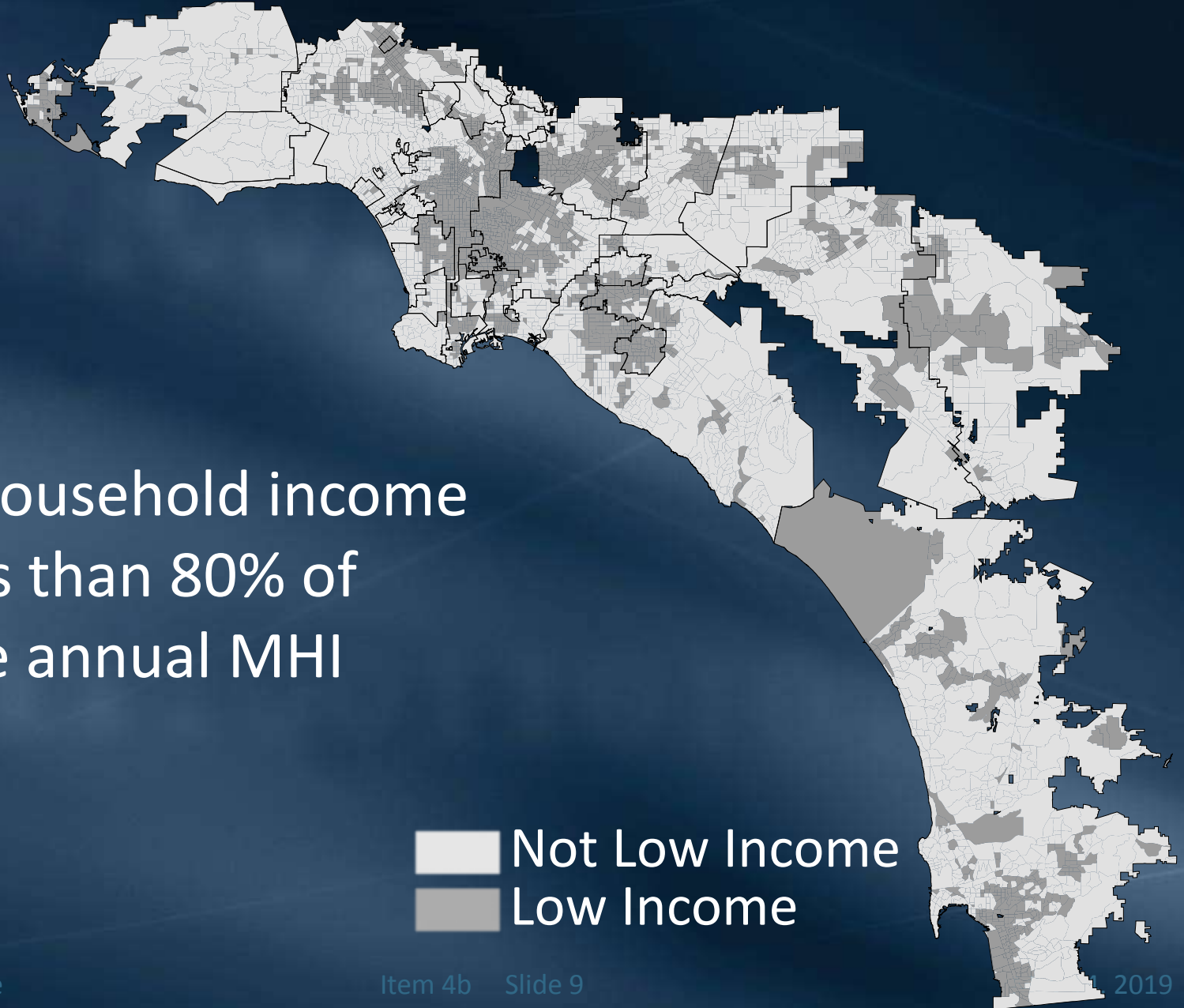


Program funding tracking tool after launch

8:27:22 AM



Low-income census tracts in service area



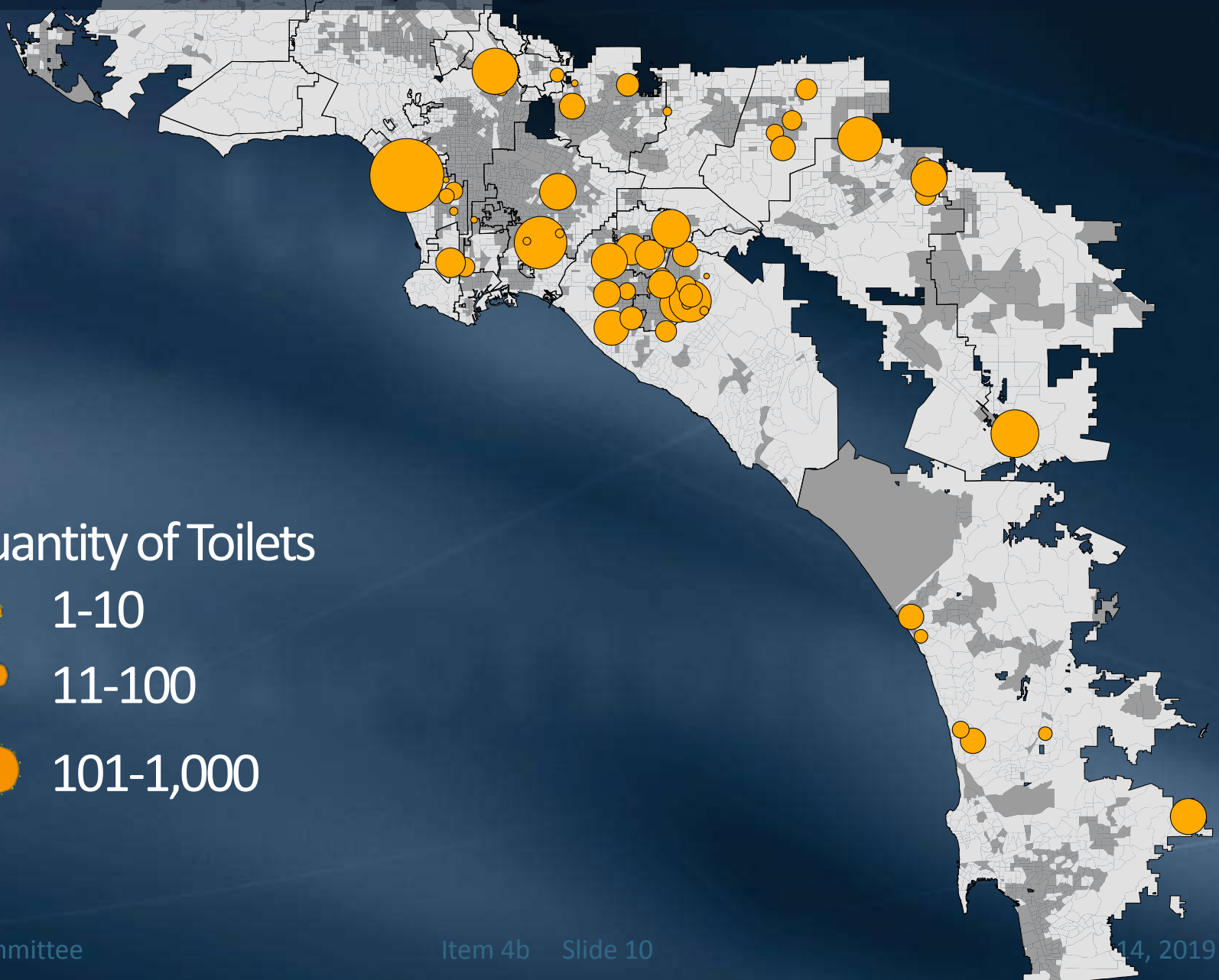
Median household income (MHI) less than 80% of Statewide annual MHI

Not Low Income
Low Income

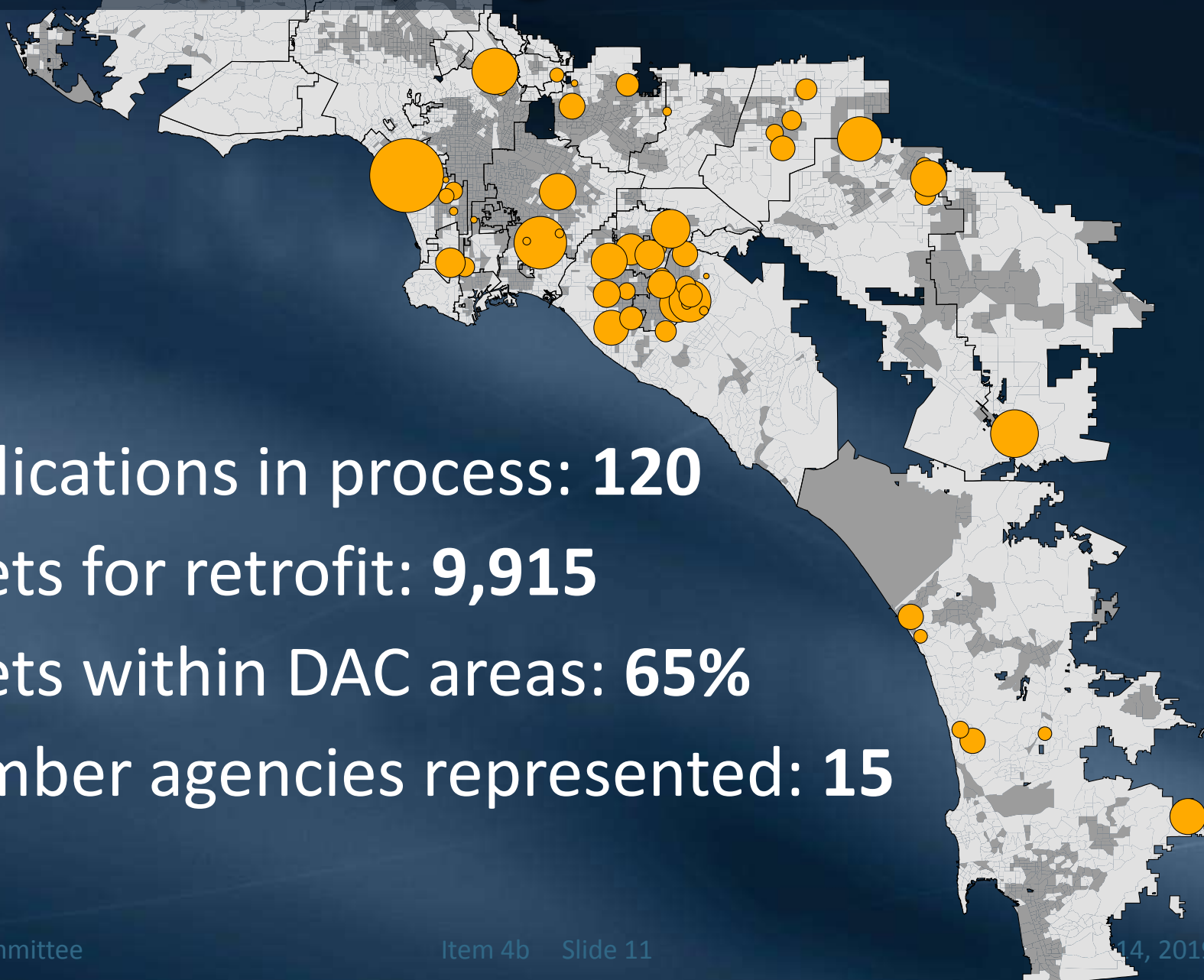
Regional pilot program distribution

Quantity of Toilets

- 1-10
- 11-100
- 101-1,000



Regional pilot program distribution



Applications in process: **120**

Toilets for retrofit: **9,915**

Toilets within DAC areas: **65%**

Member agencies represented: **15**

Applications

	Non-DAC	DAC	Total
Anaheim, City of		22	22
Central Basin Municipal Water District		2	2
Eastern Municipal Water District		1	1
Fullerton, City of		1	1
Glendale Water and Power		7	7
Inland Empire Utilities Agency	10	1	11
Long Beach Water Department		3	3
Municipal Water District of Orange County	8	10	18
Pasadena, City of	1	1	2
San Diego County Water Authority	5	2	7
Santa Ana, City of	1	5	6
Torrance, City of	3	6	9
Upper San Gabriel Valley MWD	2	9	11
West Basin Municipal Water District	2	14	16
Western Municipal Water District	1	3	4
Grand Total	33	87	120

	Toilets		
	Non-DAC	DAC	Total
Anaheim, City of		905	905
Central Basin Municipal Water District		317	317
Eastern Municipal Water District		530	530
Fullerton, City of		361	361
Glendale Water and Power		613	613
Inland Empire Utilities Agency	811	100	911
Long Beach Water Department		667	667
Municipal Water District of Orange County	687	501	1188
Pasadena, City of	15	48	63
San Diego County Water Authority	335	475	810
Santa Ana, City of	112	899	1011
Torrance, City of	100	213	313
Upper San Gabriel Valley MWD	20	277	297
West Basin Municipal Water District	1248	191	1439
Western Municipal Water District	108	382	490
Grand Total	3,436	6,479	9,915

Pre-installation inspection activity

Regional Pilot Program



Pre-installation inspection activity (continued)

Regional Pilot Program



Pre-installation inspection activity (continued)

Regional Pilot Program



Disadvantaged Communities Program

Three-part approach approved by Board in December 2018

Regional Pilot Program

Enhanced incentive for pre-1994 multi-family

Local Support for Agencies

For targeted DAC programs

Grant Funding Support

Assistance pursuing grants

MWD staff support

Local Support for Agencies

Outreach to member agency staff

- In person “one on one” meetings
- Retail agency forums
- Conference calls

Eight local projects submitted:

- Direct install (Los Angeles, Long Beach, MWDOC, Anaheim)
- Distribution (Upper San Gabriel Valley)
- Education (Pasadena, Central Basin, Calleguas)

MWD staff support (continued)

Local Support for Agencies

MWD staff offering the following:

- Project concepts
- Implementation strategies
- Outreach ideas
- Grant writing

Consultants hired to provide
MWD staff with assistance

Disadvantaged Communities Program

Three-part approach approved by Board in December 2018

Regional Pilot Program

Enhanced incentive for pre-1994 multi-family

Local Support for Agencies

Grant Funding Support

Assistance pursuing grants

Grant support for agencies

Grant Funding

USBR WaterSMART application

- Submitted March 2019
- \$1.5M requested
- Outdoor efficiency direct install
- If awarded, funding to be made available to member agencies

Next steps

- Continue pre- and begin post-installation inspections
- Perform data analysis
- Continue meeting with and providing support to agencies
- Share project ideas among agencies
- Continue to pursue grant opportunities

