



Water System Operations Manager's Report

Engineering and Operations Committee

Item 7a

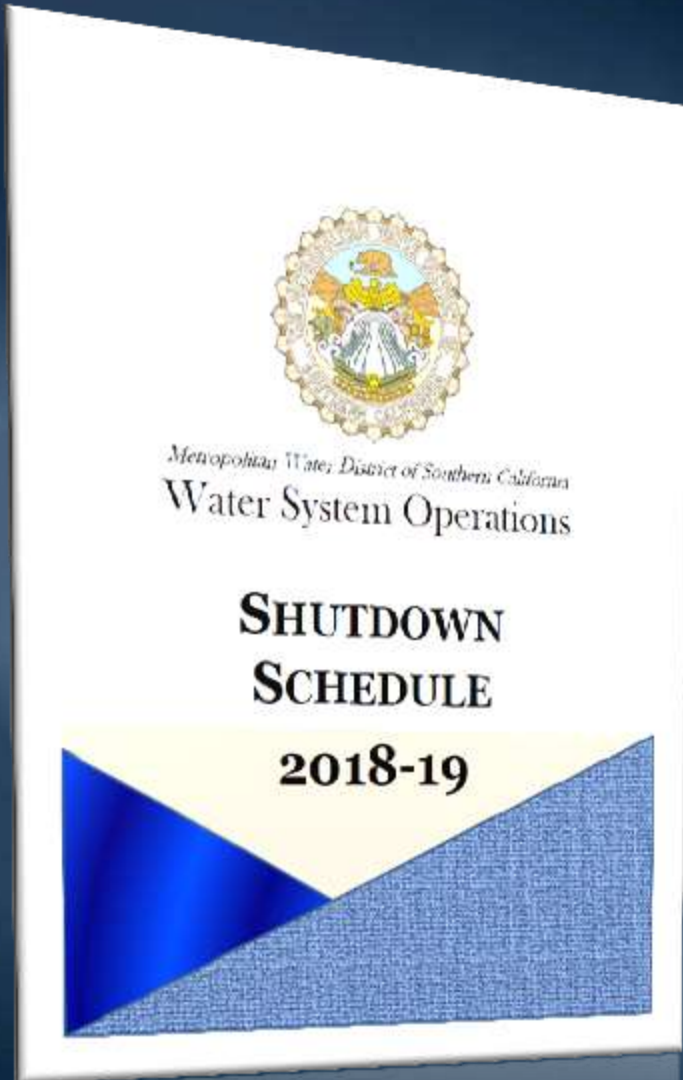
September 10, 2018

Current Operational Conditions

- 2018 SWP Allocation is 35%
- SWP blend targets are 35% at Weymouth, Diemer, and Skinner
- The CRA is currently at a 7 pump flow
- Managing storage based on WSDM principles
- August 2018 deliveries of 167 TAF were 19 TAF lower than August 2017

Ensuring Continued System Reliability

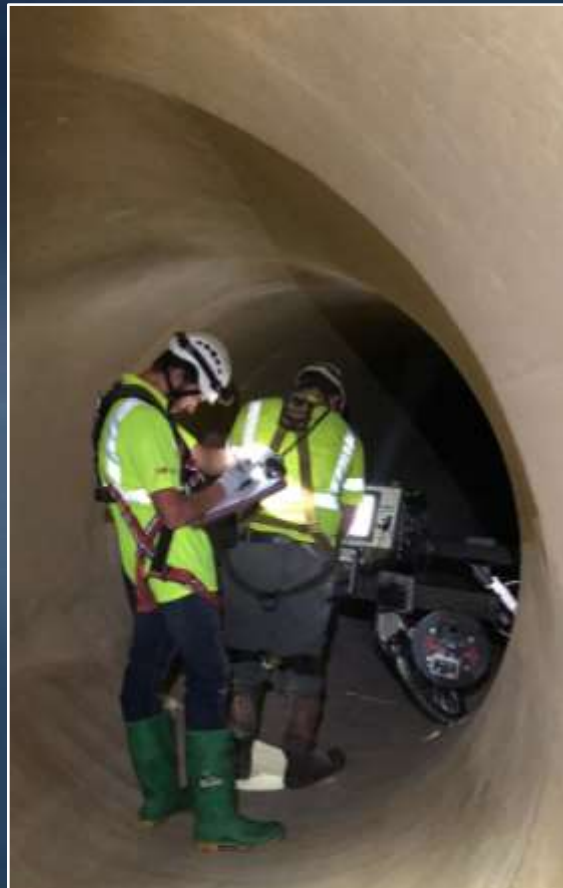
2018/2019 Annual Shutdown Plan



- Publish and present to member agencies in September
- 47 shutdowns
- Plan also includes three year look-ahead

Ensuring Continued System Reliability

2018/2019 Annual Shutdown Plan Highlights



Rialto and Foothill Feeder Inspections



Second Lower Feeder PCCP Relining



Jensen Water Treatment Plant



CRA Maintenance

