



# Adopt CEQA Determination and Adopt Resolution for Calleguas Annexation No. 101 to Calleguas MWD and Metropolitan

Finance & Insurance Committee  
Item 7-1  
April 10, 2018

**Item # 7-1  
Calleguas  
Annexation No. 101**

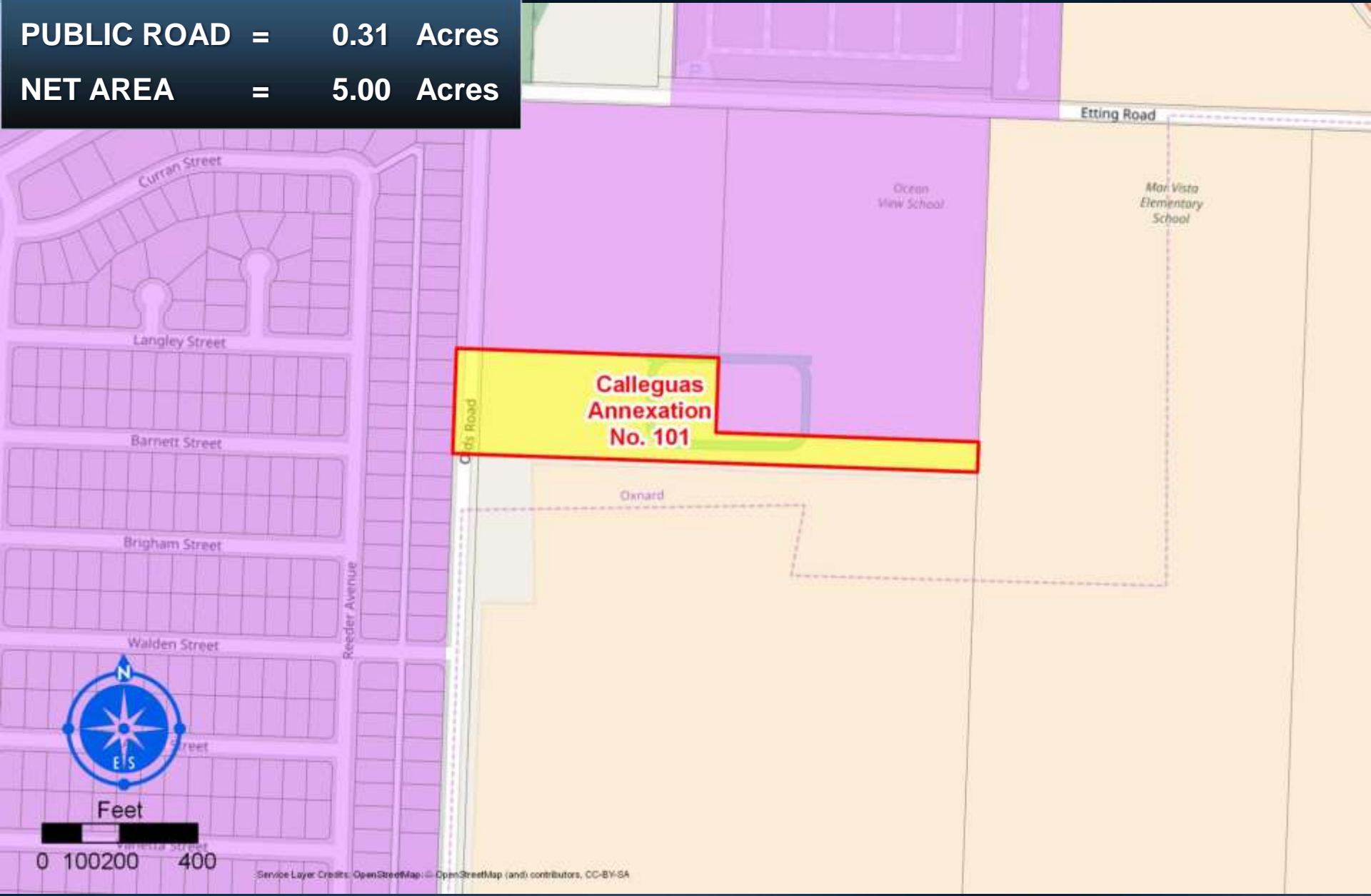


J:\Projects\Annexations\GIS\Calleguas\_MWD\Calleguas\_No\_101\Calleguas\_101.aprx (Printed 2/27/2018) Photography Data: N/A Prepared by: Enrique Chen (Geomatics & Mapping Team) Checked by: Ethel Young Job# GIS17-101E

**GROSS AREA = 5.31 Acres**

**PUBLIC ROAD = 0.31 Acres**

**NET AREA = 5.00 Acres**



Service Layer Credits: OpenStreetMap (and) contributors, CC-BY-SA

# Summary

Annexation	Proposed Land Use	Acres	Annexation Charge	Increased Demand Upon Metropolitan (acre feet/yr)
Annexation No. 101	Public School	5.31	\$ 28,355	0
Processing Charge			\$ 5,000	
<b>TOTAL</b>		<b>5.31</b>	<b>\$ 33,355</b>	<b>0 AFY</b>



# Board Options

- Option 1:

- Adopt CEQA determination

Adopt resolution granting approval for Calleguas Annexation No. 101 concurrently to Calleguas and Metropolitan and establishing Metropolitan's terms and conditions for the annexation, conditioned upon approval by Ventura County's Local Agency Formation Commission, and upon receipt of annexation fee of \$33,355

- Option 2:

- Decline the Request

# Staff Recommendation

- Option 1

