



Authorize Lease on Metropolitan Property

Real Property & Asset Management Committee
Item 7-5
June 13, 2017

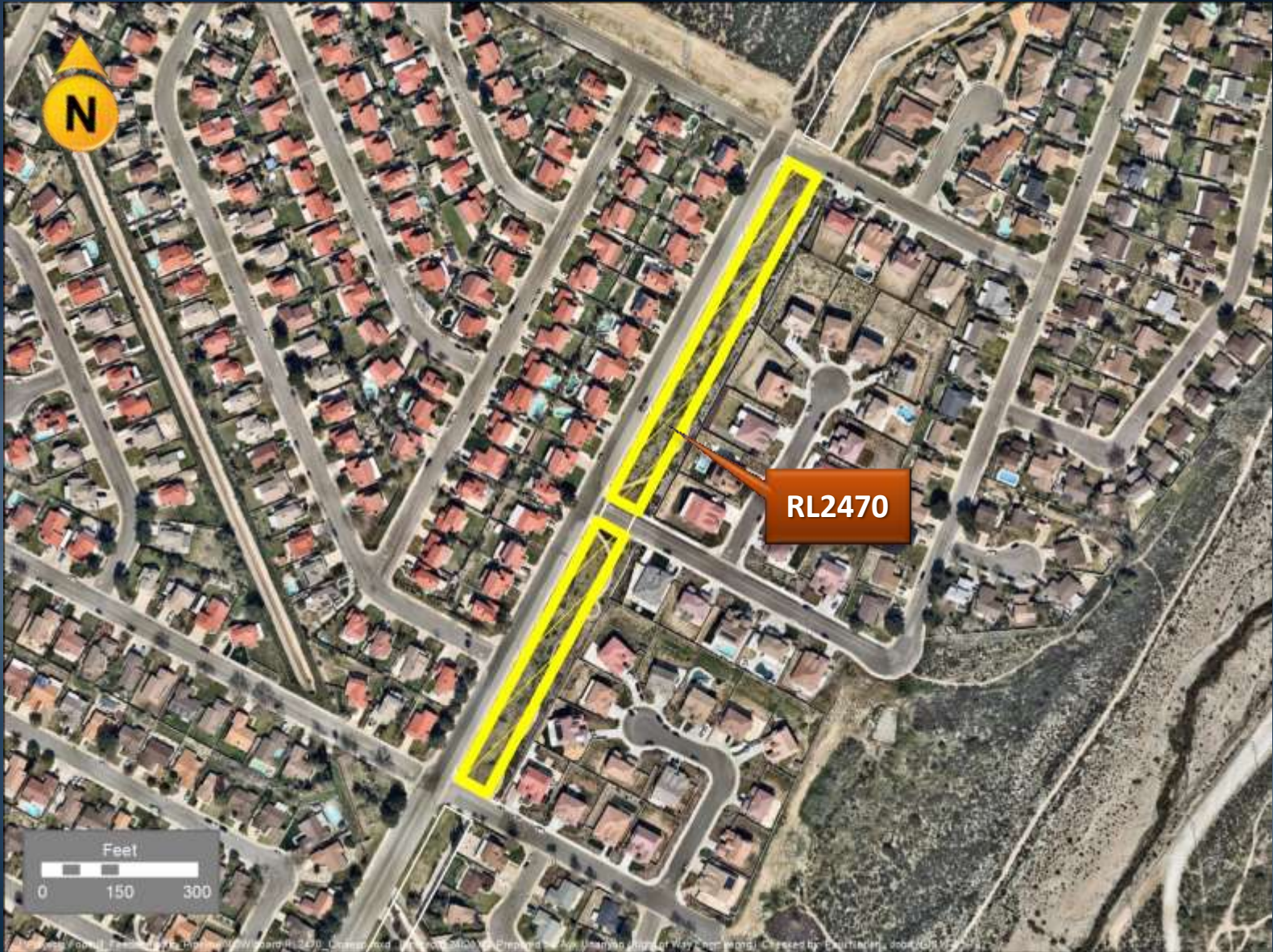
Distribution System Map



General Location Map



Site Map



Proposed Lease – City of San Bernardino

- Long-term lease to allow landscaping greenbelt
- Twenty year term
- Total of approximately 1.86 acre
- Compensation – Appraised market rent of \$2,700 first year with 4 % annual increases; plus \$2,500 processing fee
- Language is protective of Metropolitan's paramount right to use property to conduct its core business

Board Options

- Option #1
 - Adopt CEQA determination
 - Authorize lease to city of San Bernardino
- Option #2
 - Do not approve the lease

Staff Recommendation

- Option #1

