



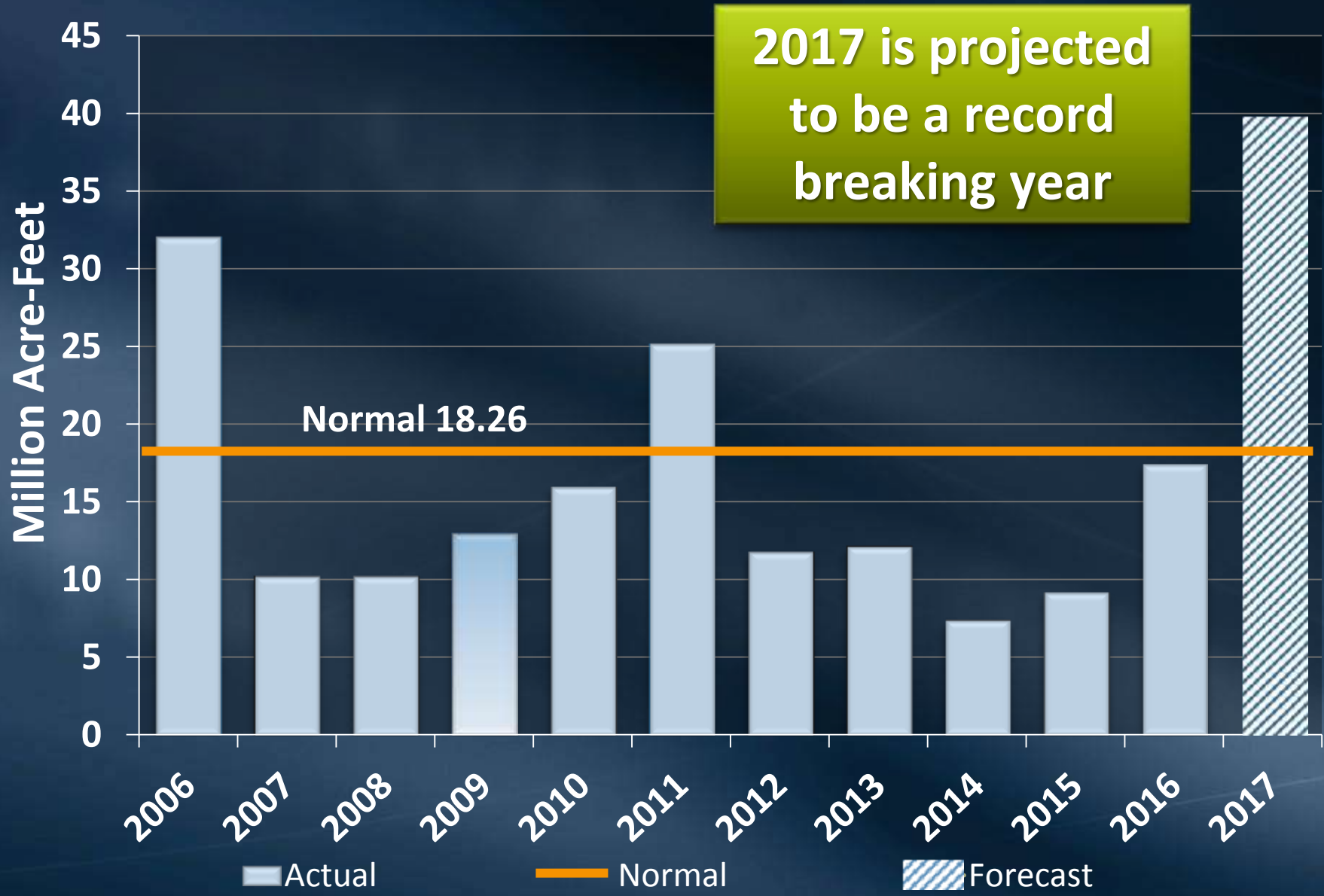
Oral Report on Water Surplus and Drought Management

Water Planning and Stewardship Committee
Item 6b
June 12, 2017

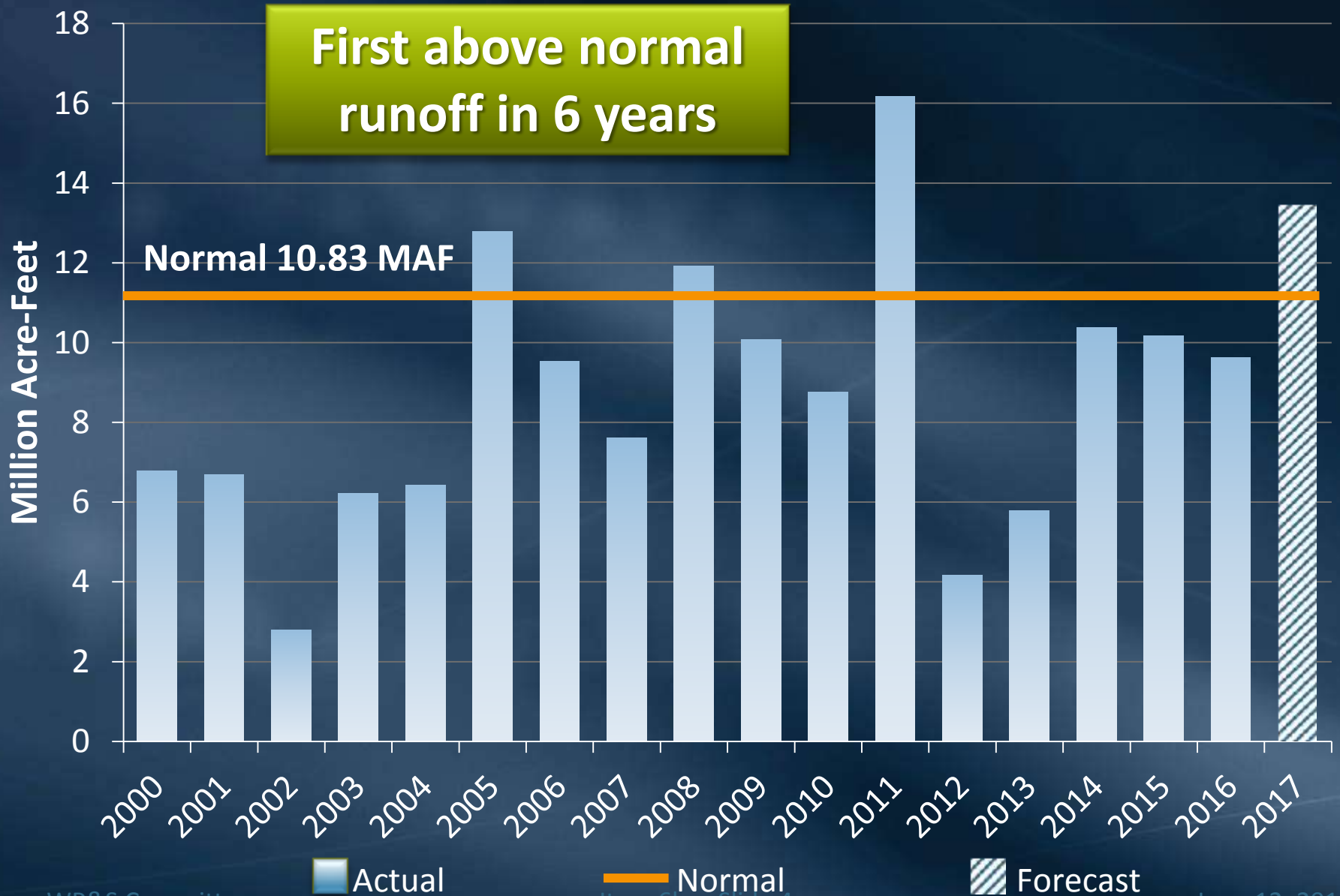
Overview

- Runoff Forecasts
- 2017 Water Supply Demand Balances
- Storage Opportunities and Challenges

Northern California Runoff



Upper Colorado River Basin Runoff

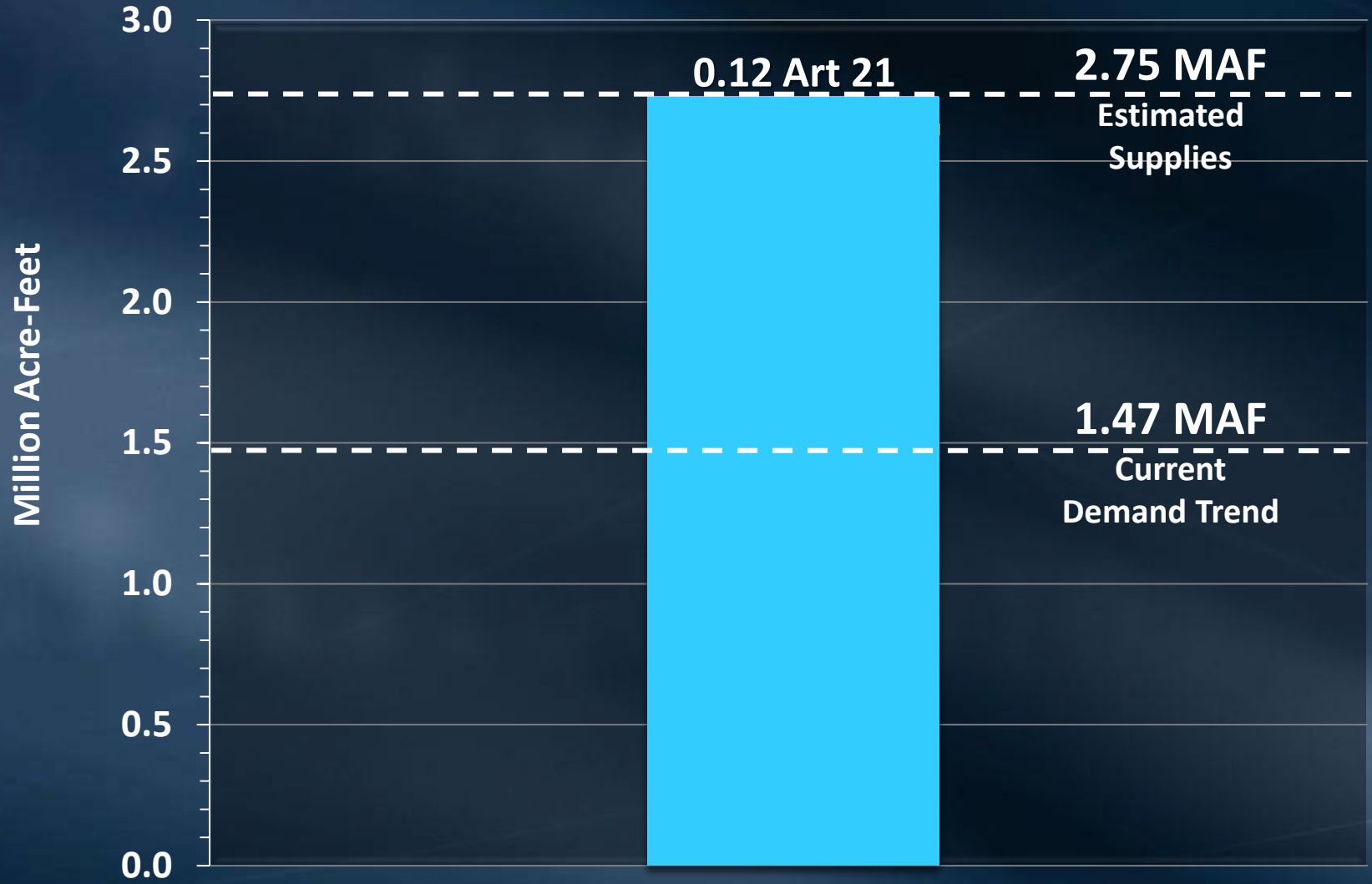


SWP Supply Status

- SWP allocation remains at 85%
- Metropolitan has received ~124,000 AF of Article 21 supplies through May
- Article 21 supply availability decreasing

2017 Supply Demand Balances

85% SWP Allocation

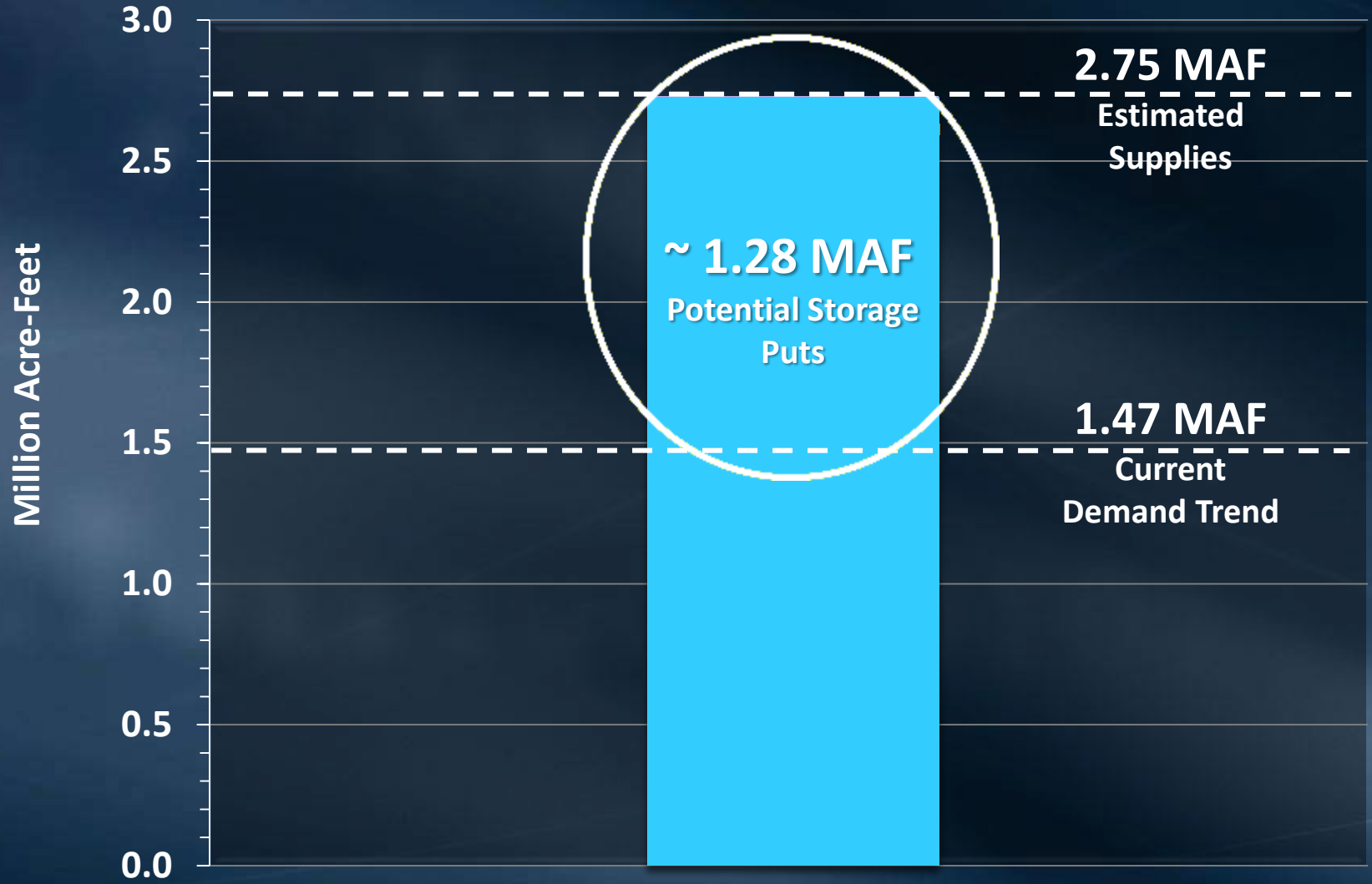


Challenges Delivering Water to Groundwater Agencies

- Possible invasive mussels detected
 - Suspected veligers (larval stages)
 - No detection in DVL, Lake Perris, Lake Silverwood
- Some groundwater connections impeded at this time due to concerns associated with quagga mussels
 - Opportunities to deliver have been lost to date
 - Demands on Metropolitan may increase if issues are resolved

2017 Supply Projection

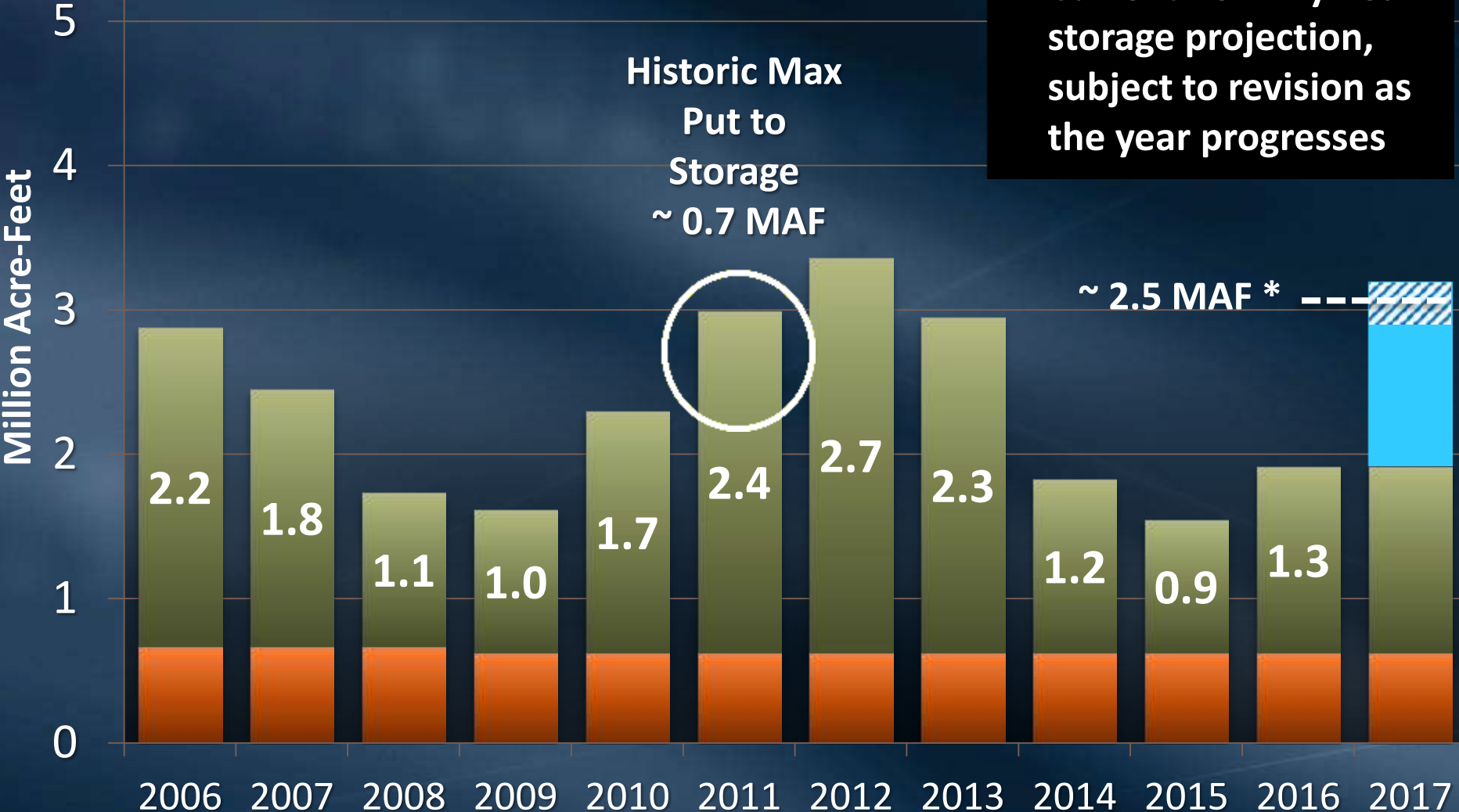
85% SWP Allocation



Metropolitan is Forecasting an Increase in Storage Reserves this Year

End of Year Balances

*** Current EOY Dry-Year storage projection, subject to revision as the year progresses**



Uncertainties Going Forward

- Demands
 - Deliveries to groundwater agencies
- Current Year Supply
 - Fall X2 – salinity standard
 - Agricultural Adjustment
- Next Year Supply
 - Oroville Storage

