

# THE METROPOLITAN WATER DISTRICT OF SOUTHERN CALIFORNIA



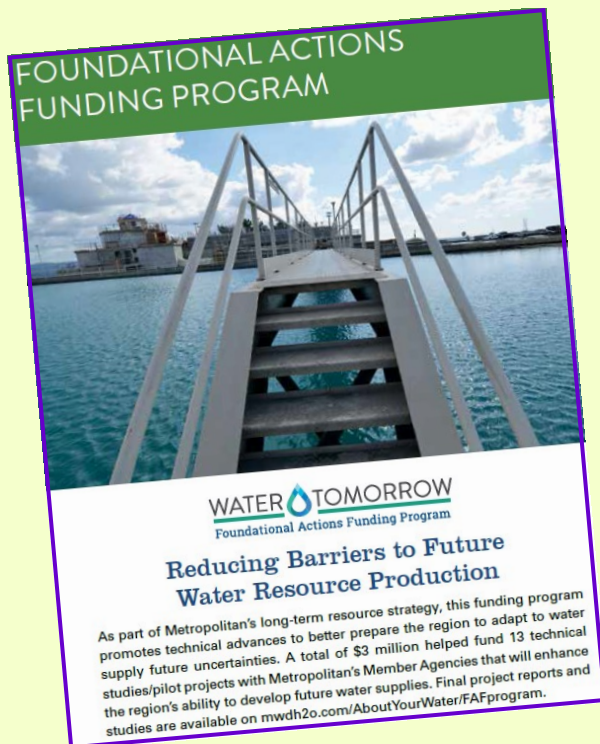
## General Manager's Monthly Activity Report for February 2017

February 28, 2017

This report identifies the actions and activities taking place during the month that support the objectives of the General Manager's Fiscal Year 2016/17 Strategic Priorities and the Core Business of the GM's work groups.

### Water Supply Reliability

In 2013, Metropolitan's Board approved a pilot Foundational Actions Funding Program that consisted of technical studies and pilot projects pertaining to the areas of groundwater, recycled water, seawater desalination, and stormwater. On February 23, Metropolitan hosted a technical conference on the findings of 13 studies and pilot projects that address obstacles to the future production of local stormwater capture, seawater desalination, recycling and groundwater recovery. Local experts from Metropolitan member public agencies who completed research and pilot projects took part in the sessions.



### Content by Work Group

Administrative Services	2	Human Resources	18-19
Annexations	2	Information Technology	20
Bay-Delta Initiatives	3-5	Real Property	20-22
Chief Financial Officer	6-7	Water Resource Mgmt	23
Engineering Services	8-11	Water Supply Conditions	24
External Affairs	12-17	Water System Operations	25-33

## ADMINISTRATIVE SERVICES

### CORE

#### **BUSINESS PROCESSES**

Advance continuous business process improvements to improve effectiveness and efficiency while striving for innovation, flexibility, and integration with technology

Implement innovative solutions for customers that will positively impact their business operations through improved quality, speed, simplicity, and cost improvements.

Enterprise Content Management—The Enterprise Content Management Project team confirmed the scope of work for Phase I of the project with the Information Governance Committee. Phase I includes a Digital Asset Optimization project to eliminate redundant, obsolete and trivial files from Metropolitan's file system. The remaining data will be given a functional classification and metadata to allow for efficient search capabilities.

Purchasing Operations—Staff surveyed multiple public agencies to acquire data for improving the procurement acquisition approval process. While the initial results indicate that Metropolitan's current overall approval levels fall within range or above other agencies, staff is continuing to assess internal approval levels to determine if changes will create efficiencies.

Discontinuance of Imaging Services Chargeback—Effective February 1, 2017, chargebacks for printing, scanning, and finishing services were discontinued. Metropolitan staff is now able to utilize imaging services for official business without an internally generated chargeback to their organization's budget. It is anticipated that this action will provide Metropolitan with cost savings by using internal resources to complete most requests and centralizing the process of determining when to use external resources.

Implement comprehensive workforce succession planning and employee development programs.

Professional Development—Staff is developing content for an Intranet portal to centralize information on the various professional certifications and provide details on the support Metropolitan will provide, such as assigning a mentor, establishing individual certification plan, and providing training opportunities to meet certification requirements.

## ANNEXATIONS

### CORE

#### **ANNEXATIONS**

Seek fair and equitable contract agreements with Member Agencies, federal, and state governments to maintain a long-term sustainable wholesale water resource to Southern California.

Metropolitan hosted the meeting of the Southern California Region of CALAFCO, sponsored by the San Diego Local Agency Formation Commission. At CALAFCO's request, Brandon Goshi provided an overview of water supply and associated policy issues affecting the southland.

## STRATEGIC PRIORITY

### COMPLETE THE BAY DELTA CONSERVATION PLAN/ CALIFORNIA WATERFIX ENVIRONMENTAL IMPACT REPORT/STATEMENT

Pursue efforts in a lead capacity to complete environmental documentation, financing agreements, and associated permits necessary to implement California WaterFix and EcoRestore.

Pursue Decision on the State's Proposed Delta Improvements including the California WaterFix and EcoRestore.

#### California WaterFix

As reported last month, the Delta Science Program staff convened a phased independent scientific peer review process to review and evaluate the methods and scientific information used in developing the California WaterFix Biological Opinions. Staff attended the science review held on January 23 and 24, 2017 and is reviewing the National Marine Fisheries Service and U.S. Fish and Wildlife Service draft Biological Opinions. The panel presented initial findings at the meeting in which they generally approved of the analytical framework, but they also identified places in the effects analyses where discussions of assumptions and sources of uncertainty were not included. The science panel is expected to release its report on March 6, 2017.

## CORE

### BAY-DELTA SOLUTIONS

- Develop near- and long-term solutions that enhance the Delta ecosystem, improve water supply reliability, protect water quality, and mitigate environmental impacts.
- Participate in the State Water Resources Control Board (SWRCB) process considering petition for an additional point of diversion as part of the CA WaterFix project.
- Continue to work on efforts related to meeting the co-equal goals of contributing to a restored Delta ecosystem and ensuring a reliable water supply for California.

NEAR TERM – Develop near-term measures, compatible with long-term Delta solutions, to improve water supply reliability and water quality, and facilitate protection and enhancement of Delta ecosystems and associated species.

#### State Water Resources Control Board

The California WaterFix Petition proceedings before the State Water Resources Control Board (Control Board) are ongoing. Part 1 of the hearings addresses the effects of the proposed project on legal users of water. Staff is preparing for the rebuttal phase of Part 1 in collaboration with the State Water Contractors (SWC) and the California Department of Water Resources. On February 21, the Control Board released a notice that presents a ruling on evidentiary objections to admission of testimony and exhibits into evidence, establishes a deadline for rebuttal testimony and exhibits, and provides a notice of rebuttal hearing dates. The deadline for submitting rebuttal testimony is March 23, 2017 and the hearing for the Part 1 rebuttal will start on April 25, 2017. Part 2 of the hearings, which are scheduled to begin once the Environmental Impact Report/Environmental Impact Statement is approved and Endangered Species Act permits are approved, will consider the effects of the proposed project on fish and wildlife and review "appropriate flow" criteria.

As reported in previous months, staff continues to participate in several aspects of the Control Board Bay-Delta Water Quality Control Plan (WQCP) update process in collaboration with the SWC. The Phase 1

## BAY-DELTA SOLUTIONS continued...

### NEAR TERM continued...

update of the WQCP addresses requirements for salinity in the southern Delta and San Joaquin River flows. The deadline for written comments on the Phase 1 document was extended to March 17, 2017. Phase 2 of the WQCP update will address other comprehensive changes, such as requirements for Delta outflows, Sacramento River flows, and interior Delta operations. For Phase 2, the Control Board released a draft technical document for review, entitled Working Draft Scientific Basis Report Supporting Potential Changes to the Bay-Delta Plan. As reported previously, staff collaborated with the State Water Contractors to submit written comments on the draft report in December 2016. The Delta Independent Science Board (DISB) conducted a review of the draft technical document. On February 16, the DISB finalized and approved their written comments on the draft technical document. The DISB comments recommend further scientific justification of the proposed use of percent unimpaired flow as a basis for establishing flow requirements, and suggest presenting a deeper analysis of non-flow stressors, additional consideration of near-term responses to climate change, and more detail on how regulations can be adaptively managed to improve scientific understanding of environmental flows.

#### Delta Operations

Staff assisted the DWR's Operations staff and the multi-agency Delta Conditions Team by providing recommendations on water project operations during February that would maximize export levels while protecting Delta smelt from entrainment by the state and federal water projects. A series of powerful storms hit Central and Northern California since the middle of January up to the present. Delta outflow exceeded approximately 200,000 cubic feet per second and San Joaquin River flows have generally exceeded 20,000 cfs since late January 2017. Export pumping remained at full physical capacity from late January 2017 until approximately February 15, when State Water Project storage in San Luis Reservoir filled and there was no longer a place to store all the water that potentially could be exported. As of February 21, SWP pumping was reduced to 3,290 cfs. Expanded Delta smelt salvage during February was 21 fish, bringing total seasonal salvage to 25 Delta smelt. This compares to an Incidental Take Level of 64. The salvage of Delta smelt during February did not cause concern to the fish agencies, given the high level of flows in the system. Higher water temperatures during mid-February caused Delta smelt RPA Action 3 to trigger, meaning that for the remainder of the spring, operations will aim at protecting Delta smelt larvae. However, due to high flows in the San Joaquin River, Delta smelt larval regulations are not expected to control operations at least through the end of March 2017.

**BAY-DELTA SOLUTIONS continued....**

**SCIENCE/REGULATORY** – Pursue the best scientific research to protect and restore fish, wildlife, and the Delta’s ecosystem while ensuring water supply reliability.

Science/Regulatory

Staff is participating in several working groups and project work teams addressing Delta fish monitoring and studies. Staff is participating in the Longfin Smelt Management Analysis and Synthesis Team to provide input and help develop the overall conceptual model and report describing the biology and ecology of longfin smelt in the San Francisco Estuary. Staff met with the principle investigators of the Turbidity Transects Program (Program). The Program is being used by the Smelt Working Group to inform their decisions regarding project operations for Delta smelt. Staff also met with the principle investigators of the Enhanced Delta Smelt Monitoring program. The program is being used by U.S. Fish and Wildlife Services to characterize the relative proportion of Delta smelt that are at greater risk of entrainment and to estimate abundance. The Smelt Working Group has been trying to use the survey to inform their decisions regarding project operations for Delta smelt.

Staff attended the workshop, “Contaminants in the San Francisco Bay-Delta: Novel Tools and Approaches to Evaluate Effects of Multiple Stressors.” The workshop recommended a greater emphasis on contaminant effects on the Delta ecosystem and shared that there are new tools that can both detect multiple contaminants in the field and evaluate the impacts of those contaminants.

Staff facilitated a meeting of resource agencies to discuss the ongoing Battle Creek restoration work, including the reintroduction of winter-run Chinook salmon. Discussions centered on identifying funding sources to complete the final components of the restoration plan.

**EMERGENCY RESPONSE** – Ensure that Delta emergency response measures are implemented, including actions to develop a freshwater pathway after a major emergency event in the Delta.

Delta Flood Emergency Management Plan

DWR has advised that there will be a separate appendix to the Delta Flood Emergency Management Plan to address representative results of the Emergency Management Tool, including implementation timelines and resources for development of the freshwater pathway. The U.S. Army Corps of Engineers (Corps) and DWR are also in the process of completing a Delta Emergency Operations Integration Plan, which facilitates linkages between DWR and the Corps during Delta emergency operations.

The potential threat of multiple island failures under a severe seismic event has been the principle concern to water interests reliant on the Delta in recent years. However, most recent flood operations have indicated that both Folsom Dam and Shasta Dam flood releases have been coordinated to reduce to some extent the timing of peak flows through the Delta and the threat to Delta levees. Reservoir release coordination would be employed in the event of a major seismic emergency to facilitate delivery of freshwater to the Delta to mitigate effects of salt water intrusion and facilitate the operation of the freshwater pathway.



## CHIEF FINANCIAL OFFICER

### CFO PRIORITY

#### **MAINTAIN STRONG FINANCIAL POSITION**

Provide innovative and proactive financial analyses, planning, and management services to ensure that forecasted revenues are sufficient to cover planned expenditures and provide a prudent level of reserves consistent with Board policy.

Manage rates and charges to help maintain low rates, minimize their variability, and recover costs consistent with Board policy.

Staff provided a report on the Treatment Charge Workgroup Recommendations to the Finance and Insurance Committee at its meeting in February 2017.

### CFO PRIORITY

#### **BUSINESS CONTINUITY**

Facilitate district-wide planning and training to prepare employees and managers to effectively carry out critical roles and recover mission essential functions thus ensuring continuity of operations in the event of a disaster.

Manage Business Continuity Program in accordance with Operating Policy A-06.

- The new Business Continuity Program manager continued learning about Metropolitan's operations and met with key personnel. Administrative training was completed on the Fusion Business Continuity Management software and site visits were conducted at the Eagle Rock and Weymouth treatment plant to gain a better understanding of the facilities and their operations.
- Meetings were conducted to explore requirements to establish an interface between PeopleSoft and Fusion systems to maintain employee information. If implemented, this would automatically update employee information and eliminate the need to manually import files.
- Presented an overview of the Business Continuity program at the quarterly Chief Financial Officer group meeting and scheduled exercises to test the business continuity plans.

### CORE

#### **RISK MANAGEMENT**

Manage Risk to protect Metropolitan's assets against exposure to loss.

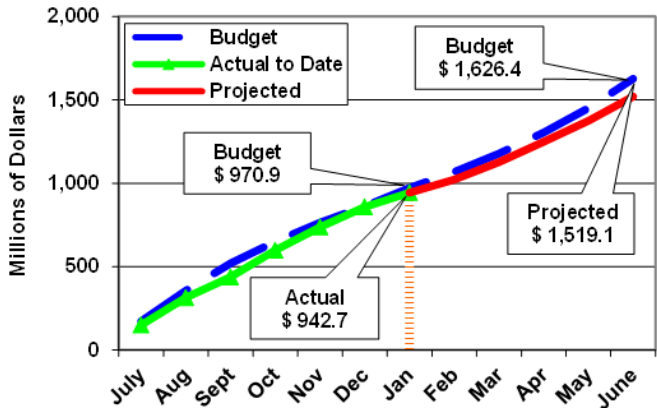
The Risk Management Unit completed 52 incident reports communicating instances of Metropolitan property damage, liability, workplace injuries, regulatory visits and spills.

Risk Management completed 96 risk assessments on contracts, including professional service agreements, construction contracts, entry permits, special events and film permits.

# CHIEF FINANCIAL OFFICER

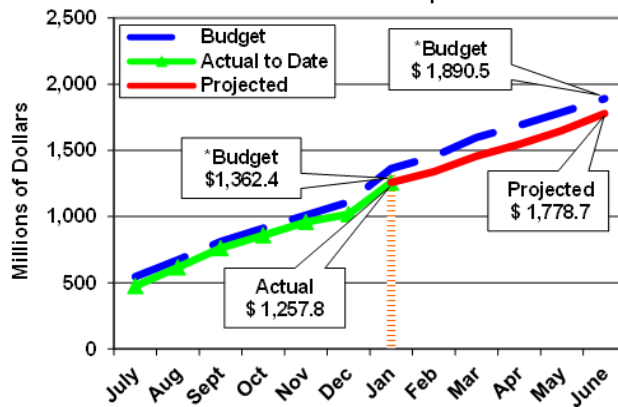
## FINANCIAL SUMMARY AS OF January 31, 2017

Revenues are expected to be \$107M under budget at year end, mainly due to lower water sales.



Excludes bond construction and other trust funds activity

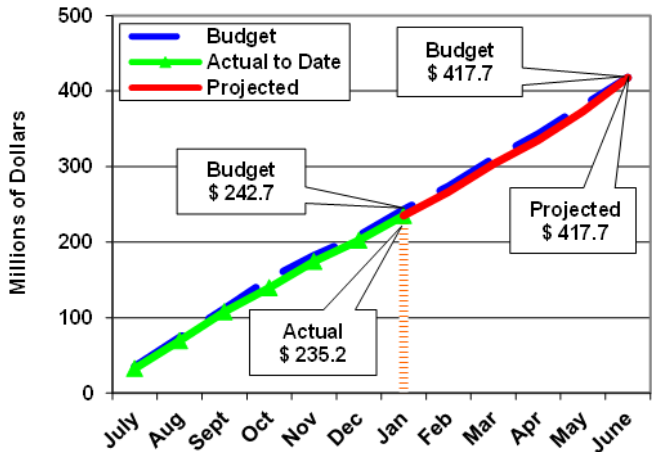
Expenses are expected to be \$112M under budget at year end, mainly due to \$80M lower cost of SWP and \$22M lower cost of Delta Wetlands land purchase.



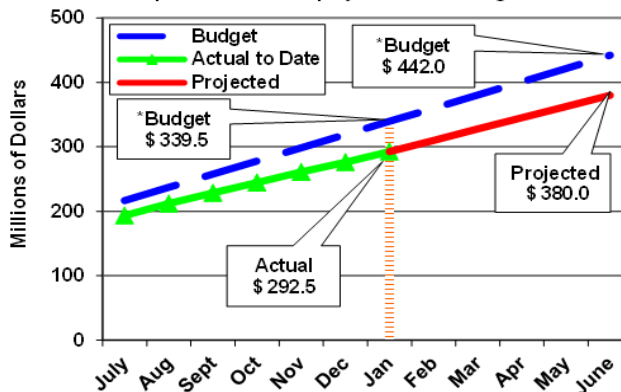
Excludes bond construction and other trust funds activity

\* Includes \$196M Board-approved purchase of Delta Wetlands, of which \$174M has been spent.

O&M expenses are expected to be on budget at year end.

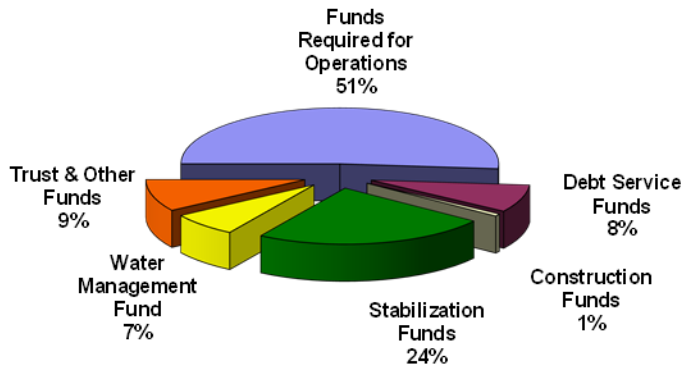


Capital Program expenses are expected to be \$62M under budget at year end, including \$22M lower cost of Delta Wetlands land purchase and \$40M lower CIP costs due to work prioritization and project rescheduling.



\* Includes \$196M Board-approved purchase of Delta Wetlands, of which \$174M has been spent.

### Cash and Investments at Fair Value \$ 1,255.4 million



### Summary Financial Statistics

	Target	Year-End Projected
Fixed Charge Coverage	≥ 1.20 x	1.48%
Revenue Debt Service Coverage	> 2.00 x	1.73%
Revenue Bond Debt / Equity Ratio	< 100.0%	62.0%

### Credit Ratings

	Target	Year-End Projected
- Moody's Investors Service	Aa2	Aa1
- Fitch Ratings	AA	AA+
- Standard & Poor's	AA	AAA

## CORE

### INFRASTRUCTURE RELIABILITY

Manage Board-authorized projects in the Capital Investment Plan and collaborate with the Water System Operations Group to identify and address system vulnerabilities to ensure reliability of the region's water treatment and delivery infrastructure. In addition, coordinate closely with WSO to integrate project planning and facility assessment efforts with near-term actions and planned shutdowns.

Manage and complete Board-authorized projects within the CIP to ensure the reliable delivery of water to Metropolitan's member agencies.

#### Distribution System Reliability Program

This program maintains reliable water deliveries through specific repair and rehabilitation projects on Metropolitan's pipelines, reservoirs, and control structures. Recent activities include the following:

- Greg Avenue Pump Station Rehabilitation—This project improves the operational reliability of the Greg Avenue Pump Station by replacing the existing pumps and upgrading the electrical and control systems. This pump station provides a backup supply of treated water to the West Valley area when the Jensen plant is out of service. Design is 94 percent complete and is scheduled to be complete by August 2017.
- DVL East Dam Electrical Upgrades—This project provides permanent electrical service to the seepage monitoring structures at the DVL East Dam and to the East Marina area. This project will connect to a new 12kV electrical service owned by S. C. Edison. Construction is 60 percent complete and is scheduled to be complete by August 2017. *(see photo below)*
- Sepulveda Canyon Control Facility Bypass—This project enhances the operational reliability of the Sepulveda Feeder by adding a bypass to the Sepulveda Canyon Control Facility, which will maintain deliveries from the Jensen plant into the Central Pool when the control facility is out of service. Preliminary design is 45 percent complete and is scheduled to be complete by December 2017.
- Allen-McColloch Pipeline (AMP) Cathodic Protection—This project installs cathodic protection at 11 locations along the AMP. Construction is ten percent complete and is scheduled to be complete by June 2017.
- Orange County Feeder Cathodic Protection—This project installs cathodic protection at three locations along the Orange County Feeder. Final design is seven percent complete and is scheduled to be complete by September 2017.
- Collis Avenue Valve Replacement—This project replaces deteriorated valves on the Palos Verdes Feeder at the Collis Avenue Valve Structure. Construction is 90 percent complete and is scheduled to be complete by April 2017.
- Leak Repairs for the Casa Loma Siphons—This project installs 13 internal seals within the Casa Loma Siphon Barrel No. 1 on the Colorado River Aqueduct to control leakage at 13 joints pipe joints. Construction is scheduled to be complete in early March 2017.
- Whitewater Siphons Erosion Protection—This project provides erosion protection of the Whitewater Siphons below the Whitewater River on the Colorado River Aqueduct. Bids were opened in February 2017 and a request to the Board for award of a construction contract is planned for March 2017.



DVL East Dam Electrical Upgrades –  
Ductbank excavation at East Marina



## INFRASTRUCTURE RELIABILITY continued...

Prestressed Concrete Cylinder Pipe (PCCP) Rehabilitation Program

This program enhances the reliability of Metropolitan's water distribution system and reduces the risk of costly emergency repairs of PCCP lines. Recent activities include the following:

- Second Lower Feeder PCCP Rehabilitation—This project rehabilitates the remaining 28 miles of existing PCCP segments within the Second Lower Feeder. Design of the valve and pipe procurement is approximately 60 percent complete and is scheduled to be complete by early 2017. Final design of the first pipeline rehabilitation package is 60 percent complete and is scheduled to be complete by August 2017.
- Programmatic EIR—Metropolitan's Board certified the programmatic EIR in January 2017. Future CEQA requirements will be determined on project-by-project basis.
- PCCP Inspections—A key component of Metropolitan's strategy for management of its PCCP feeders is to perform regular monitoring of the lines. Electromagnetic inspections of portions of the Calabasas Feeder and West Valley Feeder No. 2 are planned for March 2017.

Water Quality/Oxidation Retrofit Program (ORP)

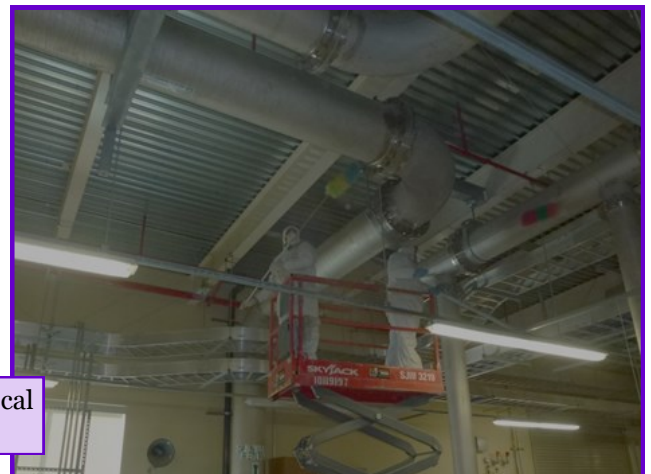
This program adds ozonation facilities which reduce disinfection by-products and improve water quality at Metropolitan's five water treatment plants. Recent activities include the following:

## Weymouth ORP

- ORP Chemical & Bromate Control Upgrades—These chemical systems are needed for integration of the new ozonation system into the plant's treatment process. Construction is 50 percent complete and scheduled to be complete by May 2018.
- Main ORP Facilities—Construction of the ozonation system is 99 percent complete and is scheduled to be complete in March 2017. Remaining project activities include control system integration, start-up and testing, permitting with the State Division of Drinking Water, and preparation of Operations and Maintenance manuals. (*see photos below*)



Weymouth ORP – First delivery of liquid oxygen



Weymouth ORP – Final cleanup of mechanical room

**INFRASTRUCTURE RELIABILITY** continued...Treatment Plant Reliability Program

This program was initiated to maintain reliability and improve the operating efficiency of Metropolitan's five water treatment plants through specific improvement projects. Recent activities include the following:

**Mills Plant**

- Chemical Unloading Facility Containment System—Construction of the containment system is 95 percent complete and is scheduled to be complete by June 2017.

**Diemer Plant**

- East Basin Rehabilitation—This project rehabilitates aging mechanical equipment and the electrical and structural components within the east flocculation/sedimentation basins. Construction is 66 percent complete and is scheduled to be complete by July 2017.
- Administration Building Seismic Upgrades—This project provides seismic and fire safety upgrades to the Administration Building at the Diemer plant, which houses the plant's control room, Incident Command Center, laboratory, and administrative offices. Construction is three percent complete and is scheduled to be complete by April 2018.

**Jensen Plant**

- Module No. 1 Filter Valve Replacement—This project replaces 78 deteriorated filter valves within Module No. 1 with new AWWA-standard valves. Construction was completed in February 2017.
- Electrical Upgrades, Stage 1—his project replaces electrical equipment, provides backup in the event of individual component failures, and upgrades the Jensen electrical system to be consistent with current codes and industry practices. The work will be completed in three stages. Construction of Stage 1 is 65 percent complete and is scheduled to be complete by February 2019.
- Jensen Ozone System Control & Communication Equipment Upgrades—This project replaces outdated process control equipment and upgrades the ozone control software at the Jensen plant. This work is scheduled to be complete by April 2018.

**Weymouth Plant**

- Filter Rehabilitation—This project replaces the internal components of the plant's 48 filters, including the underdrains, media, launder troughs, and surface wash systems. Construction is 81 percent complete and is scheduled to be complete by December 2017.

Right-of-Way and Infrastructure Protection Program

This program performs needed site improvements throughout the distribution system, including erosion protection for pipelines and access roads. It also addresses right-of-way issues such as access easements and third-party encroachments, and obtains long-term programmatic environmental permits to enable system-wide improvements.

- Orange County Operating Region—Final design of improvements within the Orange County region is 99 percent complete and is scheduled to be complete by March 2017.
- Western San Bernardino County Operating Region—Final design of improvements within the Western San Bernardino County region is 80 percent complete and is scheduled to be complete by May 2017. The draft programmatic environmental impact report for this region is planned to be released for public review by March 2017.
- Los Angeles County Operating Region—Preliminary design of improvements is 98 percent complete and is scheduled to be complete by April 2017.
- Riverside/San Diego County Operating Region—Preliminary design of improvements is 98 percent complete and is scheduled to be complete by March 2017.

## INFRASTRUCTURE RELIABILITY continued...

Colorado River Aqueduct (CRA) Reliability Program

This program maintains the reliability of Metropolitan's CRA conveyance system. Recent activities include the following:

- Sand Trap Rehabilitation—This project replaces deteriorated sand trap equipment located upstream of the Iron Mountain, Eagle Mountain, and Hinds Pumping Plants. Construction is 70 percent complete and is scheduled to be complete by August 2017.
- Sump System Rehabilitation—This project rehabilitates the main and auxiliary sump systems at Metropolitan's five CRA pumping plants. The sump systems include parallel pumps and piping that circulate cooling water and collect drainage water from several sources. Rehabilitation will be completed in two stages. The initial stage includes installation of sump isolation valves to isolate the circulating water system from the pumping plant's inlet lines, therefore eliminating the need to shut down the aqueduct for future sump repairs. The installation of these valves is complete. The second stage includes full scale rehabilitation of the sump system. Design of the Stage 2 improvements is 65 percent complete and is scheduled to be complete by November 2017.
- Conduit Structural Protection—This project adds protection over the aqueduct cut-and-cover conduits at 22 siphons where there is vulnerability to heavy vehicle and equipment loading. Design is 15 percent complete and is scheduled to be complete by December 2017.
- Expansion Joint Repairs—This project repairs 16 expansion joints located on the pump delivery lines at the five CRA pumping plants. Repairs will be completed in two stages. The initial stage addressed three joints and was completed in February 2016. The Board awarded a construction contract for the remaining 13 joints in February 2017.
- Copper Basin and Gene Wash Reservoirs Discharge Rehabilitation—This project rehabilitates the discharge structures at Copper Basin and Gene Wash Reservoirs. The project scope includes replacement of the fixed cone valves at the base of the dams; upgrades to the electrical systems; and access improvements to safely enable construction personnel, materials, and equipment to reach the work site. A procurement contract for the valves was awarded in December 2016 and Notice to Proceed for fabrication was issued in February 2017. Preliminary design to improve access is scheduled to be complete by summer 2017. Final design of the valve installation is 30 percent complete and is scheduled to be complete by December 2017.
- CRA Discharge Line Isolation Coupling Assembly Installation—This project will install a total of 45 couplings in the six-foot-diameter discharge lines downstream of each main pump unit at all five CRA pumping plants. The discharge line isolation couplings will allow individual pump units to be isolated in order to either perform rehabilitation or regular maintenance on the pump units. Design is 60 percent complete and is scheduled to be complete by March 2018.

Cost Efficiency and Productivity Program

This program provides economic savings through enhanced business and operating processes and through reduced energy costs. Recent activities include the following:

- Jensen Solar Power Plant—This project constructs a 1-megawatt solar generating facility on the grounds of the Jensen plant in Granada Hills. Construction is 22 percent complete and is scheduled to be complete by August 2017.

## STRATEGIC PRIORITY

### EDUCATE THE PUBLIC AND STAKEHOLDERS ON CRITICAL WATER SUPPLY CONDITIONS AND CRITICAL WATER MANAGEMENT DECISIONS

External Affairs will develop and maintain relationships with the public, legislative leaders, government officials, non-governmental organizations, and other stakeholders, and implement effective and diverse communication and outreach strategies on the value of water, current water supply conditions and the importance of Metropolitan actions to promote stewardship, planning and investments to benefit the region.

Recognizing there is a new normal that is directly impacting California water conditions, inform key stakeholders, media, businesses and the public on the need for sustained conservation actions, support for new water supply projects and continued investment in imported water systems to maintain water supply reliability and protect the environment.

- Chairman Record was interviewed by Art Levine on current water conditions and key policy issues for an upcoming edition of Straight Talk radio program at the Urban Water Institute conference. Metropolitan sponsored the conference, which also featured presentations by Assistant General Manager Patterson and Special Projects Manager Westford. (February 9-10)
- General Manager Kightlinger appeared on the KNBC-TV Los Angeles public affairs program News Conference to discuss California WaterFix, current conditions in Southern California and other water issues.
- General Manager Kightlinger was interviewed by BuzzFeed reporter to discuss impact of heavy rain and snow in California this winter and what it means for future water supplies.
- Group Manager Upadhyay was interviewed for stories about whether the state's drought is over and benefits to the region's reservoirs and groundwater basins. Reporters were from Southern California News Group, on-camera with KABC-TV, LA Times, KNX radio, Sacramento Bee, Voice of San Diego and Water Deeply.

#### Response to Events at Lake Oroville

- General Manager Kightlinger and State Water Contractors General Manager Erlewine conducted a press conference with reporters to discuss Oroville Dam spillway damage and related issues. Reporters from the Los Angeles Times, Associated Press, Sacramento Bee, NBC national news, San Jose Mercury News, KPCC public radio, KQED public radio and Southern California News Group participated on the call. (February 13)
- General Manager Kightlinger was interviewed for stories about Oroville Dam and potential impacts on Southern California water supplies for KNBC-TV; KNX radio (CBS-Los Angeles); KCRW-NPR's radio show, *To The Point* with Warren Olney; and News In Depth public affairs show on KTTV-TV Fox 11.
- General Manager's blog was posted with a new website on Oroville events, fact sheets and Metropolitan's response to media reports about safety issues raised during the 2005 relicensing process. (*see photo right*)



Increase awareness and advance public understanding of the current and anticipated risks to Southern California's water supply reliability and the need to prepare for potentially drier and more volatile supply conditions and impacts due to climate change.

Metropolitan's Water Policy and Strategy Manager Goshi was interviewed by Environment and Energy News reporter to discuss how climate change is affecting California water supplies, storage and conservation.



**LEGISLATIVE, COMMUNICATIONS, COMMUNITY RELATIONS, PUBLIC AND BUSINESS OUTREACH**

Engage the public, labor, business community, agriculture, government leaders, non-governmental organizations and other stakeholders in California's water issues, communicating Metropolitan's interests and Board-adopted policies through federal and state legislative strategies, multimedia and multi-cultural communications, and educational and other outreach programs. Inform the public about Metropolitan projects, facilities, operations and initiatives to gather input and support, foster competitive and diverse business opportunities and facilitate innovation and technology sharing.

**LEGISLATIVE SERVICES** - Develop and implement local, state and federal legislative and regulatory strategies consistent with Board-adopted policies. Promote interaction between Metropolitan leadership and various stakeholders, including elected officials, to facilitate support for, and garner greater understanding of, water policy issues.

**Federal**

- Collaborated with Western Urban Water Coalition to refine water policy objectives for consideration by the U.S. Department of Interior and Office of Management and Budget. (February 10)
- Met with the Coalition to Protect Water Conservation to promote federal legislation to clarify that water conservation rebates should not be considered as taxable income. (February 15)
- Participated in a Washington, D.C. briefing with the U.S. Interior transition team and House and Senate committee staff members to discuss water management and policy priorities of the new administration. (February 16)
- Staff participated in a federal regulatory and legislative policy conference organized by the Western Coalition of Arid States. Priorities are to protect water provider access to tax-exempt municipal bond financing, and legislation to amend the federal tax code for water conservation rebates. (February 23-24)
- Vice Chair Ackerman, Directors Gray, LeFevre, Peterson and Saxod and Assistant General Manager Zinke participated with the Association of California Water Agencies Washington D.C. Conference, which featured presentations from Senator Feinstein, House Majority Leader McCarthy and several other Members of the California delegation as well as presentations by members of the Administration's transition team. (February 27-March 2)

**State**

Metropolitan submitted its 2017 Progress Report: Achievements in Conservation, Recycling and Groundwater Recharge to the legislature. (February 1)

More than 2,000 new legislative bills were introduced by the February 17 bill introduction deadline.

**Infrastructure Investments**

Nancy McFadden, Executive Secretary to Governor Brown, presented to the National Governors Association a list of more than \$100 billion in targeted infrastructure projects for consideration by the Trump Administration. The list has 14 water reliability, storage, flood protection and ecosystem enhancement projects including California WaterFix; San Luis Reservoir expansion; Folsom Dam raise; Metropolitan's proposed Regional Recycled Water Program, and restoration efforts, among other projects. (February 7)

**Water Affordability**

The State Water Resources Control Board held a workshop on the Affordable, Safe Drinking Water Initiative. Representatives from the water industry, non-profit and environmental justice communities shared their perspectives on water affordability, and SWRCB launched a web-based portal with water affordability data. (February 8)



## LEGISLATIVE SERVICES continued...

**Local**

- Staff briefed the Construction Industry Coalition on Water Quality on water supply issues, California WaterFix and other issues. (February 1)
- Director Dick, Chair of Metropolitan's Agriculture and Industry Relations Committee spoke at the Rancho California Water District Agriculture Water Summit on Metropolitan's partnership with agriculture. More than 100 farmers and agricultural business owners attended the event. (February 3)
- Staff attended the Santa Monica Chamber of Commerce's State of the City event which featured former Housing and Urban Development Secretary Cisneros as the keynote speaker. (February 6)
- Metropolitan joined a delegation of six business leaders from the Valley Industry and Commerce Association (VICA) to meet with Assembly Members Ridley-Thomas, Friedman, Nazarian, Bocanegra, Frazier, Calderon and staff from the offices of Senator President Pro Tem de Leon and Assembly Members Gomez, Allen and Holden to discuss various water policy issues. (February 7)
- Metropolitan sponsored and staff attended VICA's Annual Office Holders Dinner with more than 25 state legislators and 400 valley business leaders. (February 10)
- Staff attended the Los Angeles Economic Development Corporation's 2017 Economic Forecast and the Central City Association Economic Forecast where experts provided an overview of national and local economic trends. (February 22)
- Staff participated in a Los Angeles County Business Federation (BizFed) board meeting with special guest Congresswoman Nanette Diaz Barragan (February 21) and Leadership Roundtable with California Insurance Commissioner Dave Jones. (February 24)

**Inspection Trips**

Approximately 150 stakeholders participated in five inspection trips to learn about the State Water Project and California WaterFix, Bay-Delta issues, the Colorado River and Southern California's water infrastructure.

California Department of Water Resources temporarily suspended tours to the Oroville facilities while emergency response, construction and repair activities are occurring. Staff is working with member agencies and directors to make necessary changes to tour itineraries and incorporate other northern California venues, as appropriate.

**MEDIA AND COMMUNICATIONS** - Communicate Metropolitan's policy priorities, actions and initiatives through various means to raise public awareness, enhance the district's visibility and cultivate support for district priorities. Update and develop new communications tools, materials and platforms to ensure Metropolitan information reaches diverse audiences throughout its service area in a cost-effective, timely, relevant manner that reflects current communications trends.

### Communication Activities

- Arranged for KABC-TV Los Angeles to film at Diamond Valley Lake for a report about California's record-breaking wet winter and impacts on DVL and Southern California water supplies.
- Set up interview with Water Policy and Strategy Manager Goshi and KNX radio to discuss ongoing mandatory state water use restrictions in light of robust rain and snow in Northern California.
- Responded to Sacramento Bee inquiry on federal infrastructure priority list.
- Provided information to Associated Press about Metropolitan's ownership of Delta islands.
- Worked with Vice Media Network crew to film at the Colorado River Aqueduct for a segment on its Earth Works program showing the importance of the Colorado River to Southern California water supplies.
- Created a new series of fact sheets and online GIS-based story map tools to highlight projects of Foundational Actions Funding program and technical workshop. (February 23)

### Press Releases

- Issued press release statement from General Manager Kightlinger regarding the State Water Resources Control Board's decision to extend the state's emergency drought regulations.
- Issued press release about three new representatives from the Central Basin Municipal Water District and the city of Glendale joining the Metropolitan Board of Directors.

### Website

More than 22,000 people visited the English, Spanish, and Chinese versions of bewaterwise.com for tips and ideas on how to conserve water.

A webpage was added to mwdh20.com with information and a series of fact sheets and about the Foundational Actions Funding program.

### Online

Online search on Google Search and the Google Content Network continued this month and increased website traffic to bewaterwise.com and mwdh20.com websites. The bi-weekly e-newsletter on California WaterFix was sent to approximately 1,000 elected officials, business leaders and community organizations.

### Social Media

Public engagement continues to grow on all social media platforms. Top performing posts in February include a new video created from Metropolitan Today/Tomorrow fact sheet and H2Love valentine video. Top views on Instagram related to winter storms and Metropolitan's tunnel cleaning equipment.

Tweets on Metropolitan's education programs received nearly 25,000 impressions using #solarcup, #waterart, #thinkh2o, #mwdeducates on Twitter, Facebook and Instagram.

**LEGISLATIVE, COMMUNICATIONS, COMMUNITY RELATIONS, PUBLIC AND BUSINESS OUTREACH**  
continued...

**PUBLIC OUTREACH AND MEMBER SERVICES** - Conduct public outreach to increase awareness and input on Metropolitan projects and initiatives and ensure impacted communities are aware of Metropolitan construction and maintenance activities. Enhance public awareness of Metropolitan's systems and facilities and the role they play in regional supply reliability while protecting environmental resources. Serve as liaison to Metropolitan's member agencies and facilitate their engagement with the district.

- Briefed Long Beach Airport management and the Public Works Departments of the cities of Lakewood and Long Beach on the Second Lower Feeder Relining Project to begin in fall 2017.
- Met with the city of Santa Ana engineering management to discuss and resolve issues of concern regarding the Orange County Feeder Relining Project. Staff conducted additional outreach to residents and businesses affected by the project.
- Provided outreach to businesses in the vicinity of the Collis Avenue Valve Structure Replacement Project in the El Sereno area of Los Angeles.
- Helped address community concerns regarding the Palos Verdes Reservoir Rehabilitation Project.
- Provided 150 notices to residents and businesses in Corona regarding the Lower Feeder shutdown.
- Met with the member agency general managers to discuss operations, activities at Oroville Dam, and other issues.
- Provided a tour of Weymouth Treatment Facilities for Glendale Water and Power operations staff and for Las Virgenes MWD.

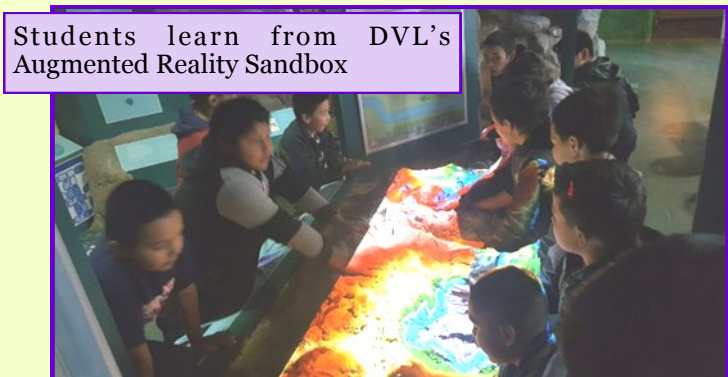
**EDUCATION AND COMMUNITY RELATIONS** - Facilitate public engagement in and understanding of water resource issues through community relations activities and education projects. Build awareness of and appreciation among Southern California youth for the value of clean, reliable water supplies and the importance of good water stewardship.

This month, the Education Unit directly interacted with more than 3,900 students and teachers.

General Education

Hosted California Department of Education's environmental literacy meeting, conducted field trips for students from Torres High School, San Gabriel GATE, Watts Charter Middle School, Aveson Elementary School, Chapman College and Whittier College, and supported UCLA Engineering Career Day activities.

In partnership with Las Virgenes MWD and Los Angeles Department of Water and Power, Metropolitan led two teacher workshops on water quality technology teaching programs, and participated with LADWP in a regional Science Bowl competition.



EDUCATION AND COMMUNITY RELATIONS continued...

**Diamond Valley Lake Education Program**

The Visitor Center hosted more than 540 visitors and guided 715 visitors to the Viewpoint. Staff provided field trips to 415 students, some of whom also participated in Western Science Center programs.

**Student Art Program**

The Student Art Exhibit was hosted by City of Corona, Las Virgenes MWD, Eastern MWD and Upper San Gabriel Valley MWD in February.

Facilitate opportunities for small businesses to work with Metropolitan. Help position Metropolitan as a leader in water resource/systems innovation.

Supported small- and disabled-veteran businesses throughout the region by participating in the following award programs, conferences and events:

- Participated in the Women Business Enterprise networking event in San Diego and provided information about upcoming opportunities to 100 participants. (February 1)
- Presented at the AWWA Utility Management Conference panel: Transforming Utilities by Fostering Innovation with innovation executives from DC Water, Arcadis and Queensland Utilities. (February 8)
- Business Outreach and Engineering partnered to exhibit at the Construction Management Association of America event in Long Beach. (February 9)
- Participated at Los Angeles Department of Water and Power workshop to showcase new pipeline inspection technologies. The study was jointly funded by WRF, LADWP, Denver Water, D.C. Water, Fairfax Water, and Seattle Public Utilities. (February 9)
- Sponsored and exhibited at the Annual Small Business Summit, a forum to help veteran and disabled veteran businesses work with government and public agencies. (February 15) *(see photo below)*
- Hosted the first ‘reverse pitch’ event to connect staff from Metropolitan, LADWP, San Diego County Water Authority and Southern California Edison with entrepreneurs of early stage technologies that can address current or future needs for utilities. (February 15)
- Sponsored the National Association of Minority Contractors of Southern California workshop with support from the Small Business Administration. (February 16)
- Participated in panel discussion with the State of California, Department of Homeland Security and Port of Long Beach at a business workshop sponsored by the Regional Hispanic Chamber of Commerce. (February 23)
- Attended opening of Center for Business Advancement at San Diego Contracting Opportunities Center in National City to provide information on Metropolitan’s small business program. (February 24)
- Participated in Ag Tech Symposium at University of California, Irvine focusing on use of drones, mapping and advanced data collection for energy and water sectors. (February 28)





**STRATEGIC  
PRIORITY**

**EMPLOYEE DEVELOPMENT**

Recruitment activity will be expanded to fully replace all retirements and add some positions to bring the work force to approximately 1,800 positions over the next two years. Increased cross-training and employee development efforts will be needed to meet the challenge of increased retirements brought about by an aging workforce.

Partner with district and group leadership to support learning, development and workforce planning initiatives.

2-hour modules of software training were conducted on the following topics:

- PowerPoint – Tips and tricks (2 classes)
- Outlook – Managing emails and Increasing Productivity
- Word – Mail merge and other tips (2 classes)
- Excel – Tips and tricks, Macros, formulas and calculations.

*Leading Technical People* class was kicked off for Administrative Services staff and another cohort of Engineering Services employees.

*Project Management, Success Signals* and three sessions of the *Personal Security Awareness* training class were conducted during the month.

A focus group on the Writing Process in Water System Operations was conducted with the assistance of an external facilitator/trainer.

Design and planning for a Management Academy for all non-Water System Operations employees was completed with rollout scheduled in the next couple of months.

Seek diverse, high-quality talent, and establish partnerships to discover additional outreach opportunities that aid in staffing positions.

During the past month, Staffing has filled 10 positions and received 2 new requisitions. Staffing is currently recruiting for 122 positions.

The Staffing Team continued to evaluate processes and the use of technology and social media to enhance abilities to recruit a diverse workforce.

**HR  
PRIORITY**

**ENSURE EFFECTIVE PEOPLE MANAGEMENT**

Provide consultation, guidance, standards, policies, procedures and learning opportunities to ensure that employee experience is enhanced as they are appropriately managed, evaluated, engaged, motivated, developed, recognized and valued.

Ensure Metropolitan managers have the foundational knowledge and on-going support to effectively manage employees.

- Conducted Module 5 of Metropolitan Management University, which focused on interpersonal effectiveness, for the third cohort of 16 managers.
- The fourth cohort of managers of Metropolitan Management University kicked off with Module One on Policy and Compliance.
- Four managers attended an Institute for Management Studies full-day seminar on *Leading Change from the Middle*.



## HR PRIORITY

### PREPARE FOR A FUTURE WORKFORCE AND CHANGING ROLES

Partner with groups to develop programs for skill development, knowledge capture, change management, and employee engagement to ensure Metropolitan's capability as an agile organization preparing for future changes and challenges.

Implement strategies to prepare management and employees for change, unknown challenges, and future retirements.

- Provided a training module on communication skills for technical people at the Metropolitan's Society of Women Engineers meeting.
- Supported deployment of the fifth cohort of the Mentoring Program in the Engineering Services Group.
- Provided continued facilitation for a Talk Circle that is looking into ways to improve effectiveness in the Real Property Group.

## HR PRIORITY

### PARTNER WITH CUSTOMERS ON HR SOLUTIONS

Collaborate and partner with customers at all levels to support strategic decisions on workforce planning, hiring strategies, advancement and learning opportunities, disciplinary issues and other challenges as they arise.

Establish partnerships focused on strategic solutions to various human resource management challenges.

- Continued to work with workforce planning and succession management actions in the Water Resource Management Group.
- Provided coaching and coordination with external coaches to address personal development and other management issues for six managers.
- Facilitated a Strategic Planning Workshop for the Chemistry Unit in Water Quality.

## CORE

### COMPLY WITH EMPLOYMENT LAWS AND REGULATIONS

Ensure all policies, programs and practices comply with ever-change laws and regulations.

Effectively administer all Human Resources policies, programs, and practices in compliance with applicable federal and state laws and Metropolitan Administrative Code, Operating Policies, and Memorandum of Understanding.

HR Benefits worked with Information Technology and HR Information Systems to complete the 2016 Affordable Care Act's mandated 1094-C Employer Statements and 1095-B Employer Report for all required employees based on IRS rules. Notification regarding the statement details and extended deadline date was announced to all employees on January 31.

Workers' Compensation/Medical Screening:

- Conducted initial investigations on 14 injury incidents
- Submitted 11 new claims to Metropolitan's workers' compensation claim administrator
- Settlements were negotiated in 2 claims and finalized in 4 claims, and 9 claim files were closed
- Conducted MedVans at Mills, Lake Skinner and Lake Mathews facilities
- Arranged 7 medical evaluations (DMV, medical surveillance, hearing conservation, etc.)
- Coordinated random drug/alcohol tests at 2 facilities
- Addressed 4 accommodation issues.

# ◆..... INFORMATION TECHNOLOGY .....◆

**CORE**

## **INFORMATION TECHNOLOGY**

Collaboratively work with customers to deliver information technology options, services, and solutions in the areas of enterprise and business applications, Engineering and Water System Operations applications, mobile/wireless computing, telecommunications, network services, information security, and personal computing.

Implement innovative solutions for customers that will positively impact their business operations through improved quality, speed, simplicity, and cost improvements.

Online Video Conferencing—Presented Skype for Business to Group Managers and scheduled deployment for this month. Skype for Business is a powerful collaboration tool for real-time input to make business meetings more productive.

Enterprise Content Management—Finalized the scope of Enterprise Content Management. Currently, the project team is in the process of preparing the Request For Proposal.

Mobile Applications—Completed the On-Call Mobile User Acceptance Testing and pilot deployment. This tool will assist Water System Operations managers to manage on-call and standby schedules of their employees.

# ◆..... REAL PROPERTY .....◆

**CORE**

## **REAL PROPERTY ACQUISITION, MANAGEMENT AND REVENUE ENHANCEMENT**

Manage Metropolitan’s real property assets with a focus on enhancement of returns while ensuring that Metropolitan’s core operations are protected. Acquire real property for future operational business needs.

Implement strategies for right-of-way planning and acquisition support of infrastructure reliability, protection programs, and Bay-Delta Initiatives.

- Prepared and processed, for External Affairs, four Release and Settlement Agreements for loss of access to residents due to street closures necessitated by repair work on the Orange County Feeder Line in Santa Ana.
- Negotiated and recorded a Reconveyance and Release of Right of Termination with the Municipal Water District of Orange County removing MWD OC’s right to terminate the Allen-McColloch Pipeline easement to Metropolitan, because the underlying financial conditions have been fulfilled by Metropolitan.
- Completed reviews of four appraisals, prepared by an independent appraiser, for temporary laydown areas as part of the Etiwanda Pipeline North Liner Repair Project.

## REAL PROPERTY ACQUISITION, MANAGEMENT AND REVENUE ENHANCEMENT *continued...*

Seek incremental revenue-generating opportunities for real estate assets in traditional and alternative market segments such as telecommunications, solar/wind generation, agriculture, and sustainable technology and research.

- An existing entry permit with Canyon Crossings Corporate Center was amended to allow temporary entry for maintenance.
- A farm lease agreement was entered into with River Valley Ranches for agricultural purposes consisting of the growing and harvesting of crops.
- A farm lease agreement was entered into with HayDay Farms Venture LLC for agricultural purposes consisting of the growing and harvesting of crops.

Foster staff training and development.

- Staff attended Metropolitan-sponsored courses *High Rise Safety Training, Defensive Driver Training, P-Card Training, Securing the Human Awareness* and the *EEO Program*.
- One manager attended the Building Owners and Managers Association course *Managing the Organization*. This course is the fourth in a series of eight courses, which are scheduled over the next 12 months. After successful completion of the program, the manager will hold a certification as Systems Maintenance Administrator.

Efficiently maintain and operate Metropolitan's Headquarters building and the Diamond Valley Lake Visitor Center.

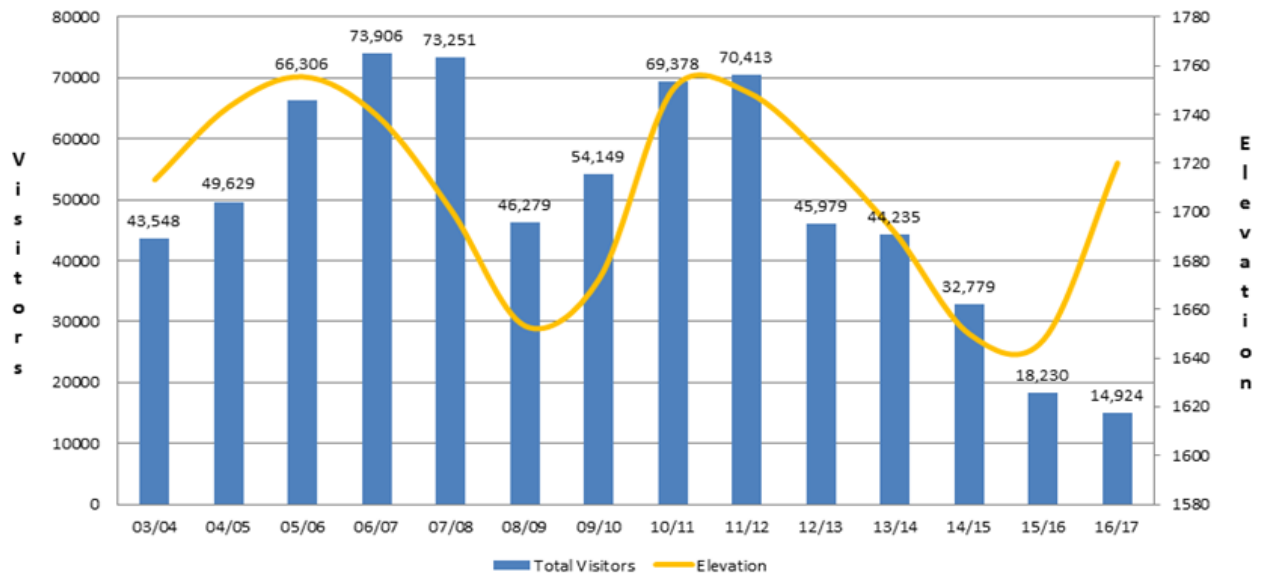
DVL Visitor Center maintenance highlights and improvements:

- Quarterly maintenance at the Visitor Center indicated the chillers used to air condition the building are in good working condition and are showing normal wear consistent with the equipment's life-cycle.
- The cyclical quarterly test was completed on the fire sprinkler system and results indicated the system is fully operational.

Metropolitan Headquarters Building maintenance highlights and improvements:

- In partnership with Contracting Services, a vendor has been selected through a Request for Proposal for Janitorial Services. Metropolitan received four total proposals. The new agreement term is for one year with a maximum amount payable of \$1,022,489, with an option to extend the contracts for four additional one-year terms. The agreement is scheduled to begin on March 1, 2017.
- Staff worked through internal processes to certify the staging equipment, procure, and schedule window washing services. Because of drought measures, this will be the first washing since 2011.

## Diamond Valley Lake Visitor / Elevation Data



This graph shows visitor trends with respect to lake elevation on a fiscal year basis since the opening of the Marina. Note that in FY2008/09 and FY2015/16, access for private boat launching was suspended due to extremely low lake levels. Visitor attendance is expected to increase as the lake levels continue to rise.

\*2016/17 reflects visitors through February 2017 (projection is 35,000).

## WATER SUPPLY

Develop and execute water resource strategies that achieve the long-term reliability envisioned in the Integrated Resources Plan (IRP). Efforts include the negotiation and management of supply, storage, and water use efficiency programs, administration of imported supply contracts, development of new water resource policy recommendations in support of the IRP, collaborative planning with member agencies, and forecasting resource and facility needs.

Ensure cost-effective and reliable imported water supplies.

Unbalanced Exchanges—Several State Water Contractors requested Metropolitan’s assistance to manage their State Water Project supplies, which were at risk of spilling from the San Luis Reservoir. Metropolitan staff negotiated terms for an unbalanced exchange, whereby Metropolitan would receive 3 acre-feet and return 2 acre-feet. On February 3, 2017, Metropolitan entered into agreements with Castaic Lake Water Agency and Central Coast Water Authority to manage a total of up to 45,584 acre-feet, of which Metropolitan will return approximately 30,389 acre-feet, for a total yield of approximately 15,195 AF at no cost. These transactions will only occur as operational conditions allow.

Implement the Local Resources Program.

Ribbon Cutting Ceremony for Terminal Island Water Recycling Plant—Staff attended the ribbon cutting ceremony for completion of the Terminal Island Water Recycling Plant expansion. Los Angeles Department of Water and Power is now constructing the distribution system to deliver about 8,000 acre-feet per year of recycled water for industrial and irrigation in the LA Harbor area.

Participate and lead, where appropriate, in statewide and regional planning efforts.

Agreement with Mexico for Emergency Water Deliveries—In conjunction with the execution of Minute No. 322 with Mexico, Metropolitan signed a domestic agreement that provides emergency water deliveries for the Tijuana region to respond to drought conditions, aqueduct construction and repairs, or water distribution infrastructure problems. The agreement will cover a period of five years, with similar to previous agreements, and will provide fair compensation to Metropolitan for the deliveries.

Ensure reliable and cost-effective water management programs.

Arvin-Edison Water Storage Program—Metropolitan operated the Arvin-Edison Water Storage District Water Quality Sub-Account in 2016. The program provided for the coordinated operation of facilities that both helped improve the water quality of the State Water Project supplies and also reduced Metropolitan’s future program costs. As a result of the operation, Metropolitan will avoid nearly \$1 million in future program costs related to the storage of water. The Arvin-Edison Water Storage Program improves Metropolitan’s water supply reliability with supplies stored south of the Delta.



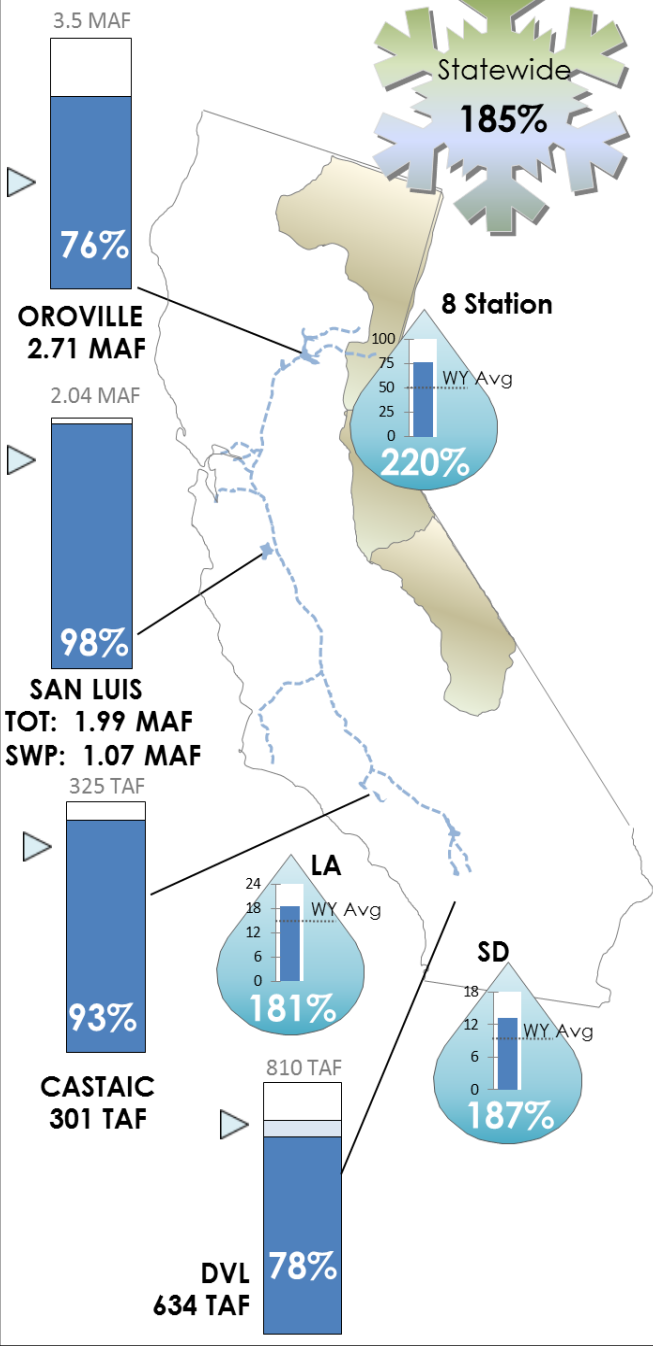
◆..... WATER SUPPLY CONDITIONS as of February 28, 2017 .....◆

**2017 SWP Allocation**

1,146,900 AF

60% of Table A

(Does not include CVWD & DWA Table A)

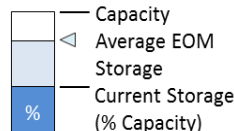
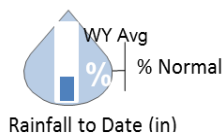
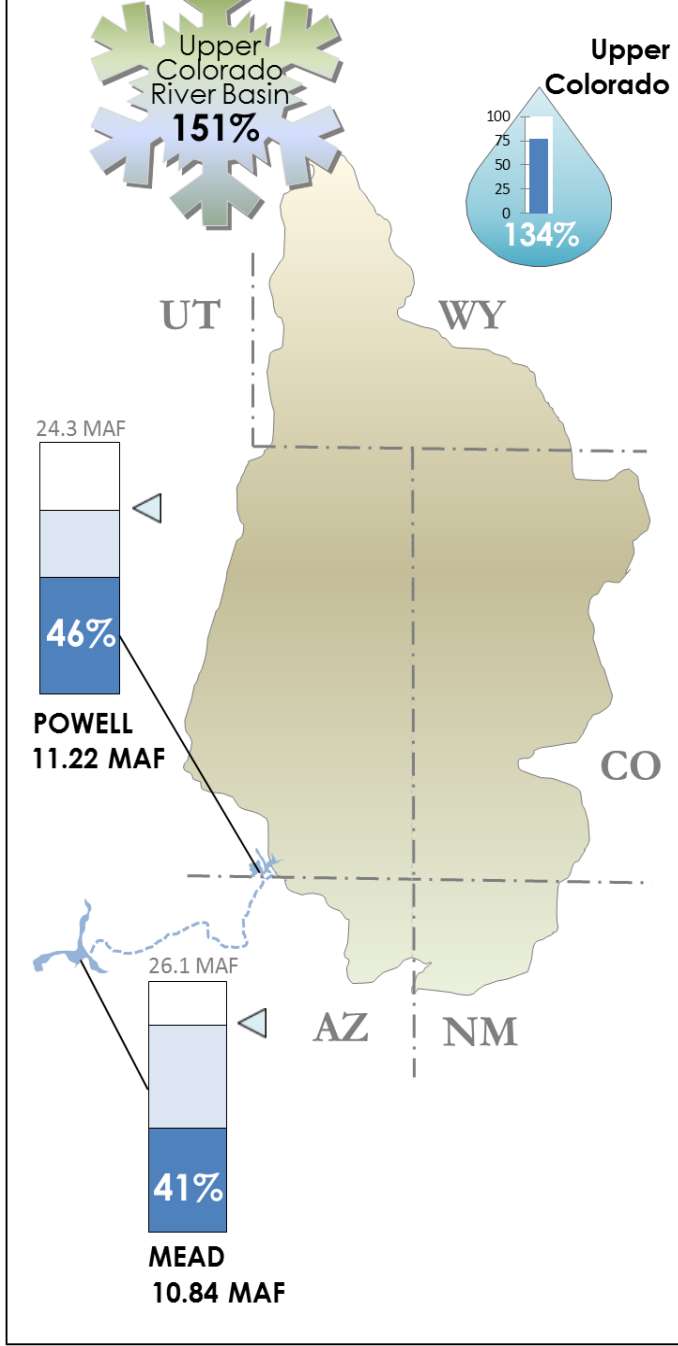


**2017 Colorado River**

928,000 AF

74% of full CRA

(Does not include storage withdrawals)



**STRATEGIC  
PRIORITY**

**DEVELOP WATER SUPPLIES AND MANAGE WATER RESERVES**

Staff will work closely with the Board to manage Metropolitan’s water supply reserves in the face of the unprecedented drought conditions in California and throughout the Southwest. If El Niño conditions create more supply, staff is prepared to maximize storage opportunities. The actions will include implementation of storage withdrawals, coordination of deliveries with the member agencies, close monitoring of drought conditions and possible allocation actions as part of the Water Surplus and Drought Management plan, and targeted outreach on conversation efforts. The past year’s successful implementation of the Water Supply Allocation Plan will be reviewed and a determination will be made on what actions to take for FY2016/17.

Manage water reserves.

In response to the continued heavy rain and snowfall throughout the state, staff continued to develop and implement strategies to maximize the delivery and storage of State Water Project supplies. The targeted blends for the Weymouth, Diemer, and Skinner treatment plants were increased to 100 percent SWP in early February. The use of SWP accounted for 69 percent of Metropolitan’s deliveries excluding 41,500 acre-feet that was delivered into Diamond Valley Lake. Storage at DVL increased to 636,000 AF or 78.5 percent full, with flows through the Inland Feeder to DVL remaining maximized.

Staff published the 2017 Annual Operating Plan and presented it to the member agency managers at their February meeting. The Plan features a number of operational scenarios under various SWP allocations (60 percent and greater), showing that all agency demands will be met and that dry-year storage is expected to increase significantly in 2017. The Plan is consistent with the Water Surplus and Drought Management Plan and a number of key operational goals and principles.

**STRATEGIC  
PRIORITY**

**EMPLOYEE DEVELOPMENT**

The proposed budget calls for Metropolitan to cease its managed attrition that has shrunk Metropolitan from 2,400 full-time employee positions to a current workforce of approximately 1,750. Recruitment activity will be expanded to fully replace all retirements and actually add some positions to bring the work force to approximately 1,800 positions over the next two years. Increase employee cross-training and employee development efforts will be needed to meet the challenge of increased retirements brought about by an aging workforce.

Manage vacancies.

WSO filled 7 vacant positions in January 2016,

Prepare employees for new opportunities.

The Water System Operations Apprentice and Technical Training Programs develop and train personnel to become qualified electricians and mechanics responsible for maintaining Metropolitan’s water treatment and distribution systems. In accordance with the Pre-Apprentice Job Announcement of upcoming recruitment posted on January 10, 2017, Metropolitan began accepting internal applications on February 17 and external applications on February 28, 2017. The next steps include written examination, physical abilities testing, and selecting apprentice candidates for the Class of 2021 apprentices in July.

The Class of 2017 mechanics and electricians completed their five-day series of instruction in water treatment and distribution. This course uses state curriculum and prepares apprentices to take the California Grade 2 Water Treatment and Distribution Operator Certification Examinations.

## WATER SYSTEM OPERATIONS

### CORE

### PROVIDE RELIABLE WATER SUPPLIES

System Operations delivered approximately 64,000 AF of water to meet member agency demands in February, which averaged approximately 2,285 AF per day. This was a decrease of 11 percent from January deliveries. The continued decrease in deliveries was due to extremely wet weather in February throughout Metropolitan's service area. Treated water deliveries for February totaled 33,700 AF, or 53 percent of total deliveries for the month. This was a decrease of 10,000 AF from January deliveries. In February, 13,815 AF of Colorado River water was pumped. This was an average 986 AF per day. The CRA was on a two-pump flow during early February, until the start of the CRA shutdown on February 14. The CRA is scheduled to return to service in early March. Year-to-date CRA diversions are 85,468 AF. State Project Water imports averaged 3,320 AF per day for 93,000 AF for the month. This was an increase of 49,000 AF from January imports. This increase illustrates the progress being made to deliver and store all available State Water Project supplies, in spite of low demands due to the wet weather.

### CORE

### OPTIMIZE MAINTENANCE

Staff installed new 500 gallon sodium hypochlorite storage tanks at the Eagle Mountain and Hinds pumping plants to control the growth of algae, quagga mussels, and clams. These constituents, if left uncontrolled, could clog pipes, seals, cooling water systems and important operating equipment. After removal of the existing tanks, the new tanks were placed, secured, and installed. The related chemical feed system equipment was also re-installed, connected to the new tanks, and tested for operational reliability by the end of January 2017. *(see photos below)*



The new sodium hypochlorite tank at Eagle Mountain pumping plant.





## WATER SYSTEM OPERATIONS

### CORE

### OPTIMIZE MAINTENANCE continued...

Staff continued to focus its coating efforts on treatment plants, conveyance and distribution facilities, and shutdown support. This month, staff recoated the handrails, valves, and motors and piping of Module #3 at the Mills plant, performed coating repairs to the wicket gate adjustment turnbuckles at Red Mountain hydroelectric power plant, recoated equipment at Santiago Creek Pressure Control Structure, and completed access plate mortar and coal tar removal and recoating at 27 locations in preparation for the Orange County Feeder shutdown to reline two miles of the feeder. *(see photo right)*



Staff performed a shutdown of the Orange County Feeder to allow a contractor to begin the Stage 2 lining repairs on the feeder. Stage 2 is a small scale demonstration project to repair 2 miles of pipe and confirm production rates, efficiencies, and shutdown flexibility. As part of this shutdown, the contractor installed a bulkhead to allow the majority of the feeder to return to service during the lining repair project. Also during the shutdown, 5.2 miles of the feeder were inspected using a remotely operated vehicle, and maintenance was completed that included valve replacements. *(see photos below)*



Orange County Feeder before (left) and after (right) the bulkhead installation to keep the majority of the feeder in service.

## WATER SYSTEM OPERATIONS

### CORE

### OPTIMIZE MAINTENANCE continued...

The La Verne Shops manufactured a new 300-pound, 24-inch by 36-inch outlet tee and various fittings for the Orange County Feeder. The tee will provide an access entry point for Reach 1 of the Orange County Feeder Relining Project. It will also provide a convenient location for dewatering activities during future maintenance shutdowns of the feeder. *(see photos below)*



The new 300-pound, 24-inch by 36-inch outlet tee (left); and (right) offset adapter flange with 6-inch blind flange manufactured and coated by the La Verne Shops for the Orange County Feeder Relining Project.

Staff installed a flow blocking gate in the Colorado River Aqueduct Whitewater Siphon First Barrel. The placement of this gate was performed to help back up the water to maximize flows for storage and exchange deliveries to the Advance Delivery Account with Desert Water Agency and Coachella Valley Water District. Without this gate, deliveries to this account, which provide dry-year supply reliability, would be much lower now that the CRA flows dropped to a two-pump flow in early February.



Installation of a flow blocking gate at the Whitewater Siphon on the Colorado River Aqueduct.

Staff isolated and dewatered a 2.6 mile section of the Palos Verdes Feeder to replace faulty valves that are over 50 years old at the Collis Avenue pressure regulating structure. This facility regulates flows for the Palos Verdes Feeder and maintains upstream pressure to ensure favorable operating conditions downstream of the Eagle Rock Control Tower. A contractor installed a new 42-inch spherical valve with a 42-inch multi-orifice control valve, two 12-inch butterfly bypass valves, and four 12-inch plug valves. In addition, various sections of interconnecting pipe were replaced.



# WATER SYSTEM OPERATIONS

## CORE

## OPTIMIZE MAINTENANCE continued...

The La Verne Shops manufactured a new 54-inch by 44-inch pipe reducer for the Palos Verdes Feeder as part of the Collis Avenue valve replacement project. The existing reducer was badly corroded and beyond repair. Once manufactured by Metropolitan forces, the new reducer was installed by the on-site contractor. Staff's ability to quickly manufacture the new equipment, on an urgent basis, helped to mitigate delays to the overall project schedule. *(see photos below)*



Left: Corroded 54-inch reducer in the Collis Avenue pressure regulating structure prior to replacement. Right: The new reducer installed in the Collis Avenue pressure regulating structure by the on-site contractor.

Staff performed major maintenance and testing on Diemer plant's high-voltage switchgear. This maintenance is necessary to ensure the equipment continues to function properly and reduces the probability of an unscheduled outage in the future. The work included cleaning, adjusting, and testing of 18 high-voltage circuit breakers. *(see photo right)*

Staff preparing to test two high-voltage circuit breakers at the Diemer plant.



Solids Handling Building at Weymouth.

On January 27, Weymouth plant staff worked with an outside vendor for installation of a new weight scale, and calibration of three of the four hopper scales in the Solids Handling Building. The scales are used to weigh the amount of solids that have been processed from the water treatment plant before the solids are transferred to a truck for disposal offsite. Having accurate scales ensures that the trucks, used to haul the solid waste, are loaded correctly and do not exceed their weight limits. *(see photo left)*

# WATER SYSTEM OPERATIONS

## CORE

### OPTIMIZE MAINTENANCE continued...

Staff repaired eroded areas caused by the recent storms along the Colorado River Aqueduct. Damage included erosion of pipeline protective fill, patrol road washouts, and excess washout material being deposited onto Metropolitan property. Staff completed repairs at three of the five sites and are developing repair plans for the remaining two sites. Additionally, staff continues to perform maintenance work on the existing drainage systems to protect the CRA from future storms. Protective measures that have been implemented include slurry backfill to protect the CRA cut-and-cover pipeline, import and placement of native material to restore patrol roads, and removal of large boulders and debris to restore access to pipeline facilities. Staff used heavy construction equipment during these operations while being closely monitored by Metropolitan inspectors.

*(see photos right and below)*



Backfill repairs



Exposed CRA piping after recent heavy rainstorms

Location where CRA cut-and-cover pipe was exposed at Station 9647+05 in the City of Desert Hot Springs.



Slurry repairs

## CORE

### MANAGE THE POWER SYSTEM

System Operations continued to maximize power generation throughout the month. Metropolitan's hydroelectric plants generated an average of 20.2 megawatts per hour for 13,600 megawatt-hours for the month.

On January 23, staff met with representatives of the Arizona Electric Power Cooperative (AEP) to negotiate arrangements to transition the CRA electrical transmission system from Southern California Edison control to AEP control. The transition will occur when the existing Service and Interchange Agreement with Edison expires on September 30, 2017. After that date, it is anticipated that Metropolitan will be working directly with AEP on operational and energy scheduling issues regarding the CRA.



## WATER SYSTEM OPERATIONS

### CORE

#### IMPROVE SECURITY AND EMERGENCY RESPONSE

On January 26, Metropolitan staff attended the quarterly Mutual Aid Regional Advisory Committee meeting at the Joint Forces Training Base in Los Alamitos. This regular meeting was hosted by the California Office of Emergency Services and brought together representatives from various emergency response partner agencies in the Southern California area. Representatives from cities, counties, major utility agencies, and other disaster response organizations participated and networked during the meeting. Topics covered included emergency communications, interoperability, and earthquake and tsunami response planning.

Diemer staff provided an awareness and emergency preparedness opportunity for the Orange County Fire Authority with a site orientation and treatment plant tour. Several Orange County fire engine companies were in attendance and through interactive dialogue, the agencies and staff enhanced their understanding with respect to promoting safety and emergency preparedness at the Diemer plant, located on a hilltop in Yorba Linda. This cooperative interagency effort is an important part of emergency preparedness that improves the awareness of local responding agencies for emergencies such as the Freeway Complex Fire adjacent to the Diemer plant in November 2008.

### CORE

#### PROTECT SOURCE WATER QUALITY

On February 23, Metropolitan staff and other key Colorado River stakeholders participated in a technical workgroup meeting regarding perchlorate cleanup at the former Tronox site in Henderson, Nevada. The Nevada Environmental Response Trust and Nevada Division of Environmental Protection discussed ongoing site investigations, interim remedial measures, and an updated groundwater model used to support final remedy development. Staff continues to monitor performance of the current groundwater remediation system, development of the long-term remedial plan, and distribution of Trust funds for site cleanup.

Staff continues to monitor the U.S. Department of Energy's (DOE) progress in the removal of uranium mill tailings along the Colorado River near Moab, Utah. The mill tailings removal rate continues to slow down as resources are being shifted to expand the disposal site, repair operating equipment, and improve safety measures. Metropolitan sent a letter to the Secretary of Energy and Congressional delegation to advocate for increased Fiscal Year 2018 funding for the project to expedite cleanup and meet DOE's targeted completion date of 2025. To date, approximately 53 percent of the original 16-million-ton tailings pile has been removed.

Metropolitan also submitted comments on the Subsequent Environmental Impact Report for the Topock Chromium-6 Groundwater Remediation Project during the public review period, which ended on February 27. Staff continues to coordinate with Pacific Gas and Electric and the Department of Toxic Substances Control to ensure the project meets its target schedule to initiate construction by the end of 2017.

Staff continued to monitor and inspect for quagga mussels at additional sites in response to the discovery of mussels in the west branch of the State Water Project. To date, no additional mussels have been found on the SWP beyond the initial discovery. Staff also participated in the California Department of Fish and Wildlife's Quagga and Zebra Mussel Water Agency Summit in San Diego on February 16–17.

## WATER SYSTEM OPERATIONS

### CORE

### PROVIDE TECHNICAL SUPPORT TO MEMBER AGENCIES

The La Verne Shops completed manufacturing of components for the LA-29 service connection. This emergency service connection is being modified with a new flow meter. The manufacturing work includes the pipe components for the service connection, the stainless steel components that will house an acoustic flow meter, and a spool assembly needed to test the meter at a third-party laboratory (Utah State University). The test assembly was completed and shipped to the laboratory for testing to begin later this month.

Staff completed a draft conceptual design report for a new flow control and metering structure on San Diego Pipeline No. 4. The new structure will help improve the metering and control of lower flows on the pipeline which serves several service connections in Riverside and San Diego Counties. Staff is scheduled to meet with agency representatives to discuss the report.

Service Connection EM-25 is a new, 100 cubic feet per second raw water connection near the City of Hemet requested by the Eastern Municipal Water District. Staff submitted a draft Project Management Plan and Conceptual Design Report to the agency.

### CORE

### OPTIMIZE WATER TREATMENT AND DISTRIBUTION

Target blends at the Weymouth, Diemer, and Skinner plants were transitioned to 100 percent State Water Project for February 2017. Flow-weighted running annual averages for total dissolved solids from December 2015 through November 2016 were 629, 627, and 623 mg/L for Weymouth, Diemer, and Skinner plants, respectively.

Construction continues on the basins at the Diemer plant. The \$32 million project rehabilitates aging mechanical equipment together with electrical and structural components inside the four east flocculation/sedimentation basins. Construction is 60 percent complete and is scheduled to be complete by July 2017. Rehabilitation includes replacing the basin inlet gates, flocculator systems (shafts, bearings, paddles, baffle boards, sprockets, drive units, chains and gears), clarifier systems (clarifier rakes and turntable assemblies), launders and weirs, and the sludge pumping system. This month, plant staff placed another of the newly rehabilitated flocculation and sedimentation basins into service. The basin rehabilitation work is staged with one basin out of service at a time to allow continuous operation of the plant while meeting treated water demands. *(see photo right)*



Diemer plant's recently rehabilitated basins in service with new equipment.

## WATER SYSTEM OPERATIONS

### CORE

#### OPTIMIZE WATER TREATMENT AND DISTRIBUTION

The Weymouth Plant Oxidation Retrofit Project is progressing and is scheduled to go online in the fall 2017. The ozone startup contractors are on-site actively working with the primary contractor and Metropolitan staff to complete the project. Work continues this month on the commissioning and startup of various systems, control system integration, and testing. This month, the first deliveries of chemicals were transported to the project and unloaded into fixed tanks. Chemical systems are needed for integration of the new ozonation system into the plant's treatment process.

### CORE

#### ENSURE WATER QUALITY COMPLIANCE, WORKER SAFETY, AND ENVIRONMENTAL PROTECTION

Metropolitan complied with all water quality regulations and primary drinking water standards during the month of February 2017.

### CORE

#### SUPPORT EDUCATION AND OUTREACH INITIATIVES

Staff assisted with a two-day employee inspection trip that included 18 participants; and two, three-day inspection trips of the Colorado River Aqueduct that included 73 guests from the Los Angeles Department of Water and Power, the San Diego County Water Authority, and the Inland Empire Utilities Agency. All trip participants visited the Gene field headquarters, attended a boat trip of the Copper Basin reservoir dam, and toured the Whittsett Intake Pumping Plant, located on Lake Havasu. Guests also visited the Alan Preston Museum to view historical artifacts from the aqueduct and old construction sites.

Staff conducted five plant inspection trips during the month of February for approximately 150 participants at the Weymouth and Diemer plants. Representatives from the City of Glendale Water and Power attended a tour of the Weymouth plant and Water Quality Laboratory. Staff members at the plants provided oral presentations on water treatment facilities, pertinent water quality and treatment issues, as well as plant operations and maintenance activities.

### CORE

#### PREPARE FOR FUTURE LEGISLATION AND REGULATION

Staff provided support through the American Water Works Association Technical Advisory Workgroup to develop comments on Environmental Protection Agency's Six-Year Review of national primary drinking water regulations. EPA determined that eight contaminants are candidates for further regulatory revision including chlorite, Cryptosporidium, haloacetic acids, heterotrophic bacteria, Giardia, Legionella spp., total trihalomethanes, and viruses. The regulatory review does not impose any new requirements; however, it provides public notification of EPA's intentions to evaluate the corresponding regulations that could be changed. EPA is accepting comments through March 13, 2017. Staff is closely tracking national regulations and will continue providing support and comments through AWWA.



# ◆.....WILDFLOWERS AT DIAMOND VALLEY LAKE .....◆

After five years of drought, the green hills surrounding Diamond Valley Lake will once again come alive with the region’s native wildflowers. In addition to fields of orange California poppies—the state flower—visitors can expect to see blue royal lupines, purple canterbury bells, yellow ranchers fiddleneck, white popcorn flowers, and pink red maids, among other wildflowers.



Arroyo Lupine



California Poppies

**Useful information:**

**AF** = acre-foot, the volume of water to cover an acre of land, one-foot deep.

Approximately 326,000 gallons of water, serves annual needs of two typical California families.

**TAF**=thousand acre-feet. **MAF**=million acre-feet.

Storage	As of 2/28/17	% of Capacity
DVL	635,628 AF	78
Lake Mathews	162,434 AF	89
Lake Skinner	38,096 AF	87

**Metropolitan’s Mission** is to provide its service area with adequate and reliable supplies of high-quality water to meet present and future needs in an environmentally and economically responsible way.

**General Manager:** Jeffrey Kightlinger  
**Office of the GM No.** 213-217-6139  
**Email:** OfficeoftheGeneralManager@mwdh2o.com

700 No. Alameda Street  
 Los Angeles, CA 90012  
 General No. 213-217-6000

[www.MWDH2O.com](http://www.MWDH2O.com)

[www.BEWATERWISE.com](http://www.BEWATERWISE.com)