



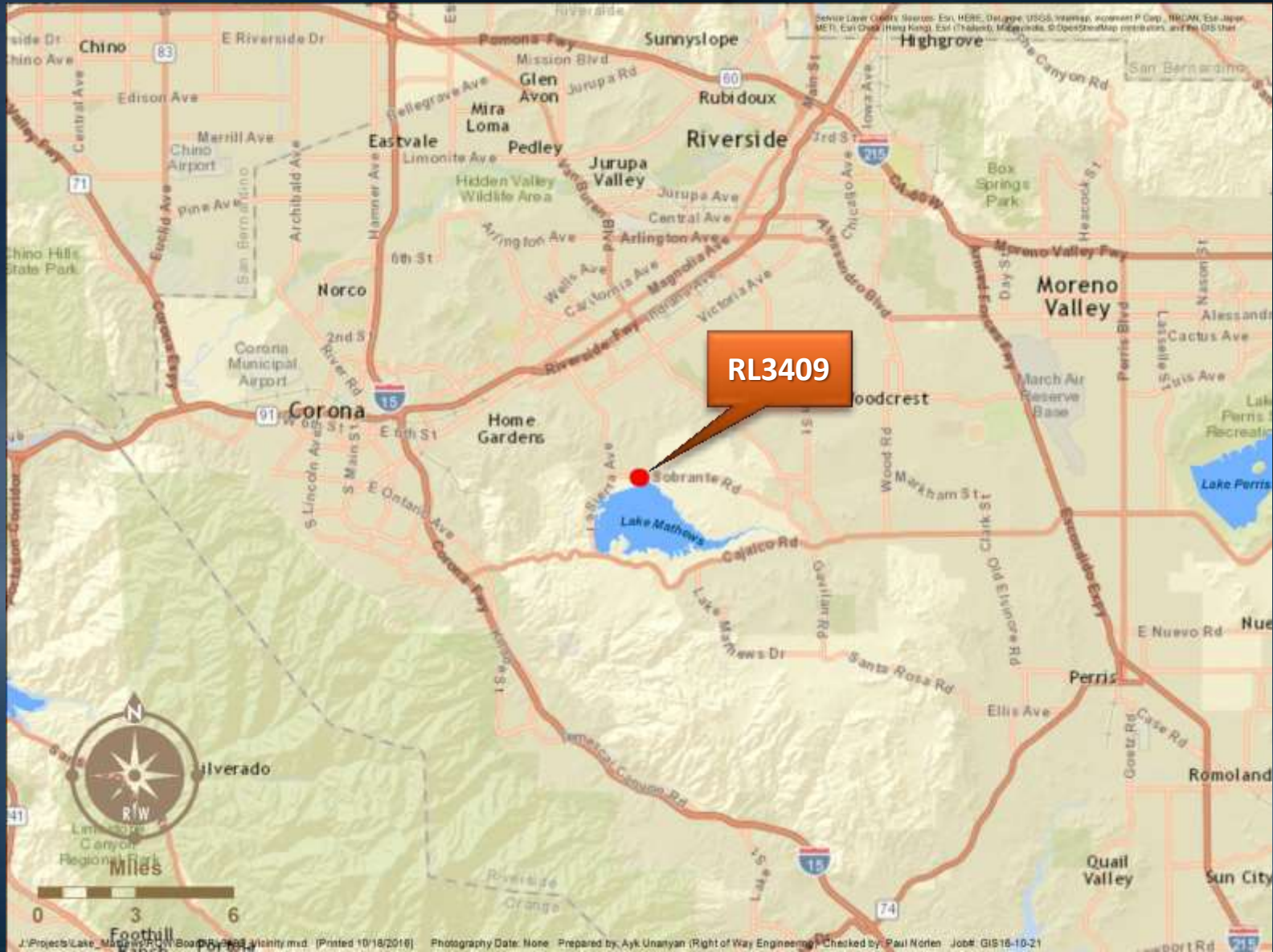
Authorize Lease on Metropolitan Property

Real Property & Asset Management Committee
Item 7-2
February 14, 2017

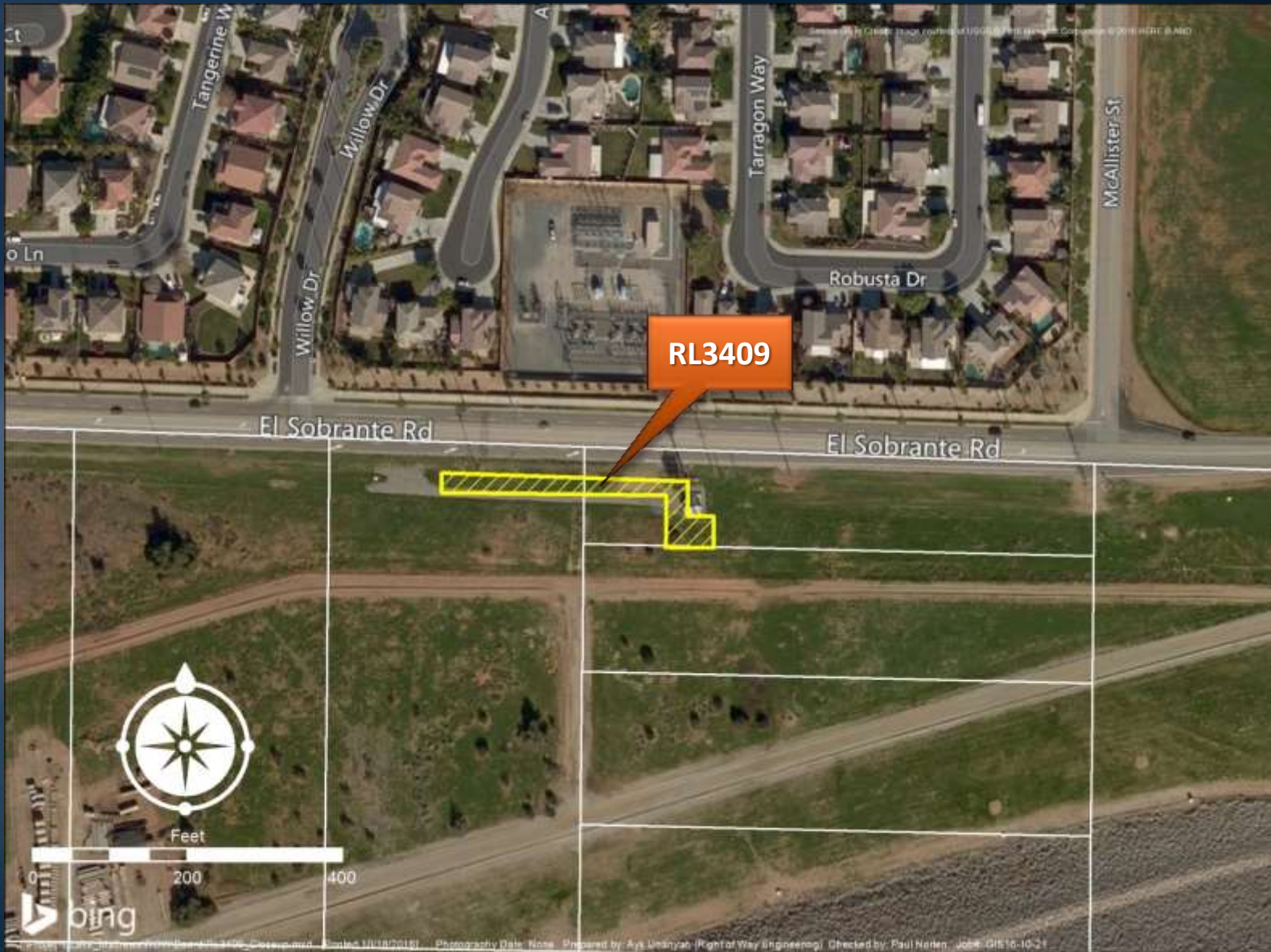
Distribution System Map



General Location Map



Site Map



Proposed Lease – New Cingular Wireless

- Long-term lease to allow installation, operation and maintenance of telecommunications equipment
- Five year initial term with two 5-year options
- Total of approximately 0.238 acre (10,367 square feet)
- Appraised market rent of \$24,600 first year with 4 % annual increases; plus \$2,500 fee
- Language is protective of Metropolitan's paramount right to use property to conduct its core business

Board Options

- Option #1
 - Adopt CEQA determination
 - Authorize one lease to New Cingular Wireless
- Option #2
 - Do not approve the lease

Staff Recommendation

- Option #1

