



# Colorado River Aqueduct Switch House Seismic Upgrades

Engineering & Operations Committee  
Item 8-2  
November 7, 2016

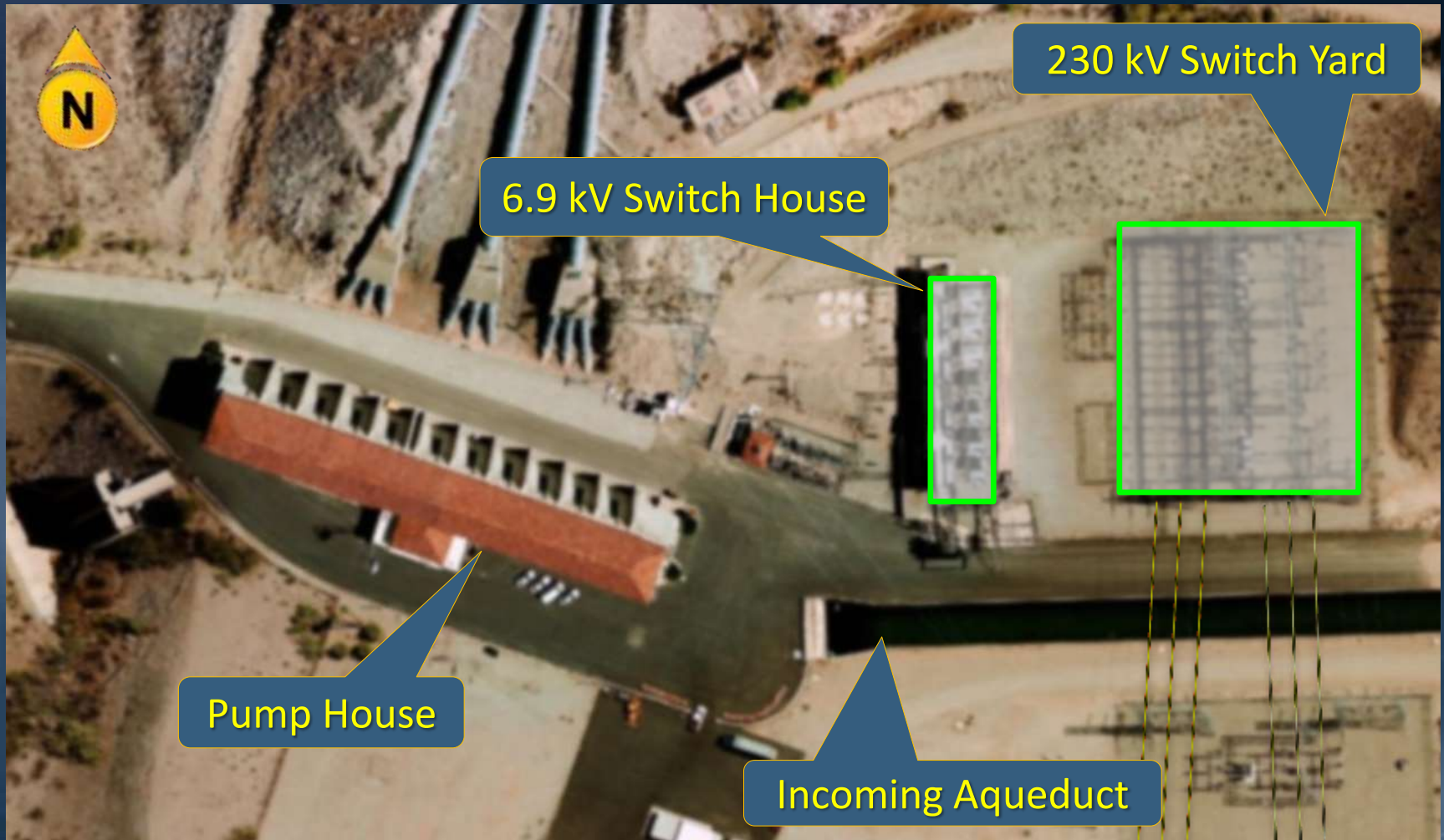
# Current Action

- Adopt CEQA determination
- Appropriate \$13,800,000
- Award \$9,595,000 contract to McMillen LLC for seismic upgrades to 6.9 kV switch houses at the CRA pumping plants

# Location Map



# Typical Pumping Plant Layout



# Background



- Constructed late 1930s
- Reinforced concrete structure
- Parapet wall supports 50-ft tall towers
- Issues/constraints
  - Work near energized lines & eqpt
  - Congested site
  - Limited shutdown opportunities

# Contractor Scope



- Addition of external buttress wall
- Strengthening of exist. walls
- Installation of piles beneath new & existing walls
- Concrete crack repair
- Strengthening of exist. anchorage at transformers

# Metropolitan Scope

- Metropolitan force activities
  - Grounding/switching of electrical eqpt
  - Connection of temp. generator
  - Modification of exist. above-ground oil lines
- Construction inspection
- Submittals review & technical support

# Bid Results

## Specifications No. 1853

Bids Received:	Sept 29, 2016
No. of Bidders:	5
Low Bidder:	McMillen LLC
Low Bid:	\$9,595,000
Other Bids:	\$10.8 M to \$13.6 M
Engineer's Estimate:	\$9,300,000
SBE Participation*:	30%

\* SBE (Small Business Enterprise) participation level set at 20%



# Requested Funds

Construction Contract	\$9,595,000
Labor	
Met Force Construction	1,350,000
Const. Inspection	1,305,000
Envir. Monitoring, PM	350,000
Submittals Review & Record Drwgs	450,000
Remaining Budget	750,000
<hr/>	
Total	\$ 13,800,000

Total construction cost: \$10.9 M

# Schedule



# Board Options

## ● Option #1

- Adopt CEQA determination that the proposed action is categorically exempt
- Appropriate \$13,800,000
- Award \$9,595,000 contract to McMillen LLC for seismic upgrades to 6.9 kV Switch Houses at the CRA pumping plants

## ● Option #2

- Do not proceed with the project at this time

# Staff Recommendation

- Option #1

