



Overview of Wallace Weir Fish Passage Project Within the Yolo Bypass Floodplain

Special Committee on Bay-Delta

Item 3b

October 25, 2016

Key Points



- Near-term fish rescue facility project in Yolo Bypass
- Funded by state and federal water contractors
- Annually will save thousands of adult salmon & sturgeon
- Other fish improvement projects under development

Regulatory Requirements

Biological Opinion requirements for Yolo Bypass

- Tidal Marsh Restoration (8,000 acres total in Suisun Marsh, Delta & lower Yolo Bypass area)
- Seasonal floodplain habitat (17 – 20,000 ac.)
- Improve upstream fish passage
- Reduce migratory fish losses



Yolo Bypass Operations



Yolo Bypass Operations

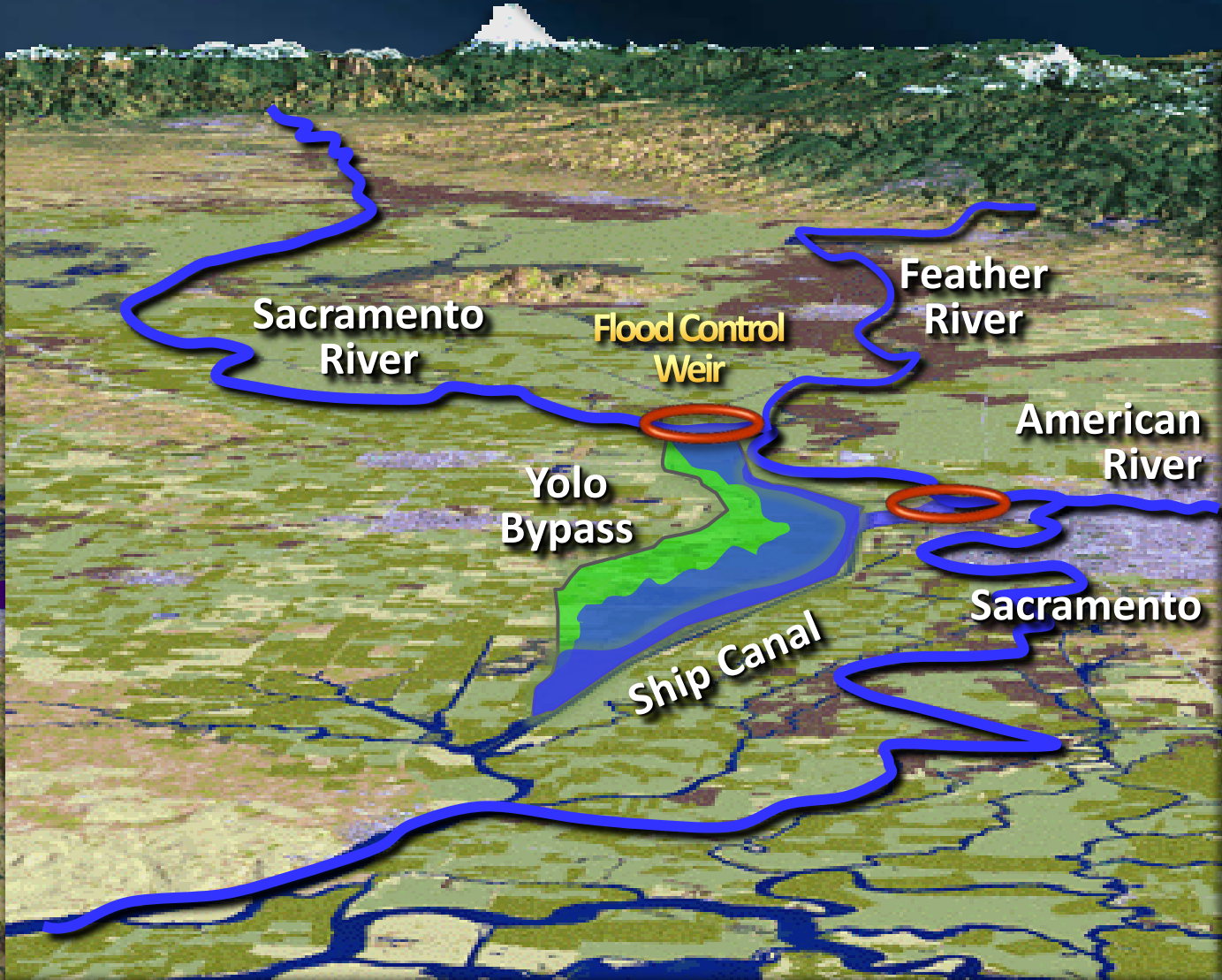


**West
Sacramento**

Sacramento

**Pre-1916 Flood Risk
Before Flood Control Project Improvements**

Yolo Bypass Operations



Yolo Bypass

Fish Improvement Projects



ckton

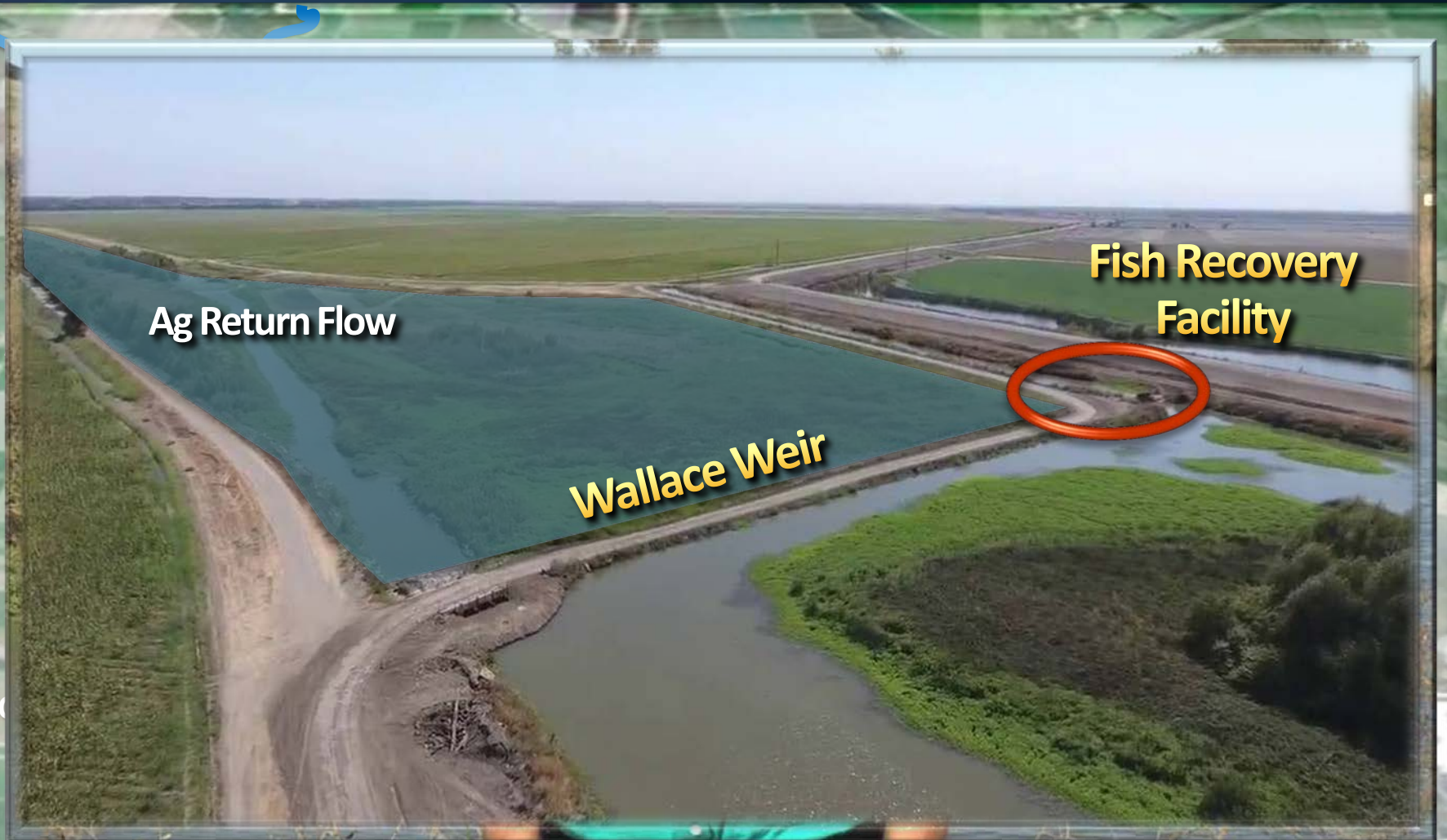
Yolo Bypass

Wallace Weir Facility & Operations



Yolo Bypass

Wallace Weir Facility & Operations



Video -- www.SacramentoValley.org

Yolo Bypass

Fremont Weir Operations & Proposed Improvements



Yolo Bypass

Fremont Weir Operations & Proposed Improvements

The Food is on the Floodplain Bug Density across Habitats



149X



X

Ridge
Ag D
C

Cache

to

mento
tional
ort

Yolo Bypass

Fremont Weir Operations & Proposed Improvements



Ridge
Ag D
C

Cache

to

mento
tional
ort

Yolo Bypass

Fremont Weir Operations & Proposed Improvements



Ridge
Ag Drain
Can

Fremont Weir
2 miles long

Cache Cr

nto

mento
ational
port

Yolo Bypass

Fremont Weir Operations & Proposed Improvements



Existing – Adult Fish
Upstream Passage

Ridge
Ag Drain
Can

Cache Cr

nto

mento
ational
port

Yolo Bypass

Fremont Weir Operations & Proposed Improvements



Sacramento ABC News10 – Mar 2012

Yolo Bypass

Fremont Weir Operations & Proposed Improvements



Ridge
Ag Drain
Can

F

Cache Cr

Near-Term Project

Enlarge & Deepen Existing
"Adult" Fish Ladder

Longer-Term Project

New "Juvenile & Adult"
Fish Passage (Conceptual)

nto

mento
ational
port



CALIFORNIA ECO RESTORE

A STRONGER DELTA ECOSYSTEM.

Summary

Eco-Restore Program



- Advancing 30,000 acres of habitat restoration
- Multiple projects in various stages of planning
- Driven by best available science, adaptive management, and multi-agency coordination

The Delta



Suisun Bay

Sacramento

Stockton

State & Federal
Pumping Plants

California's Bay-Delta

