



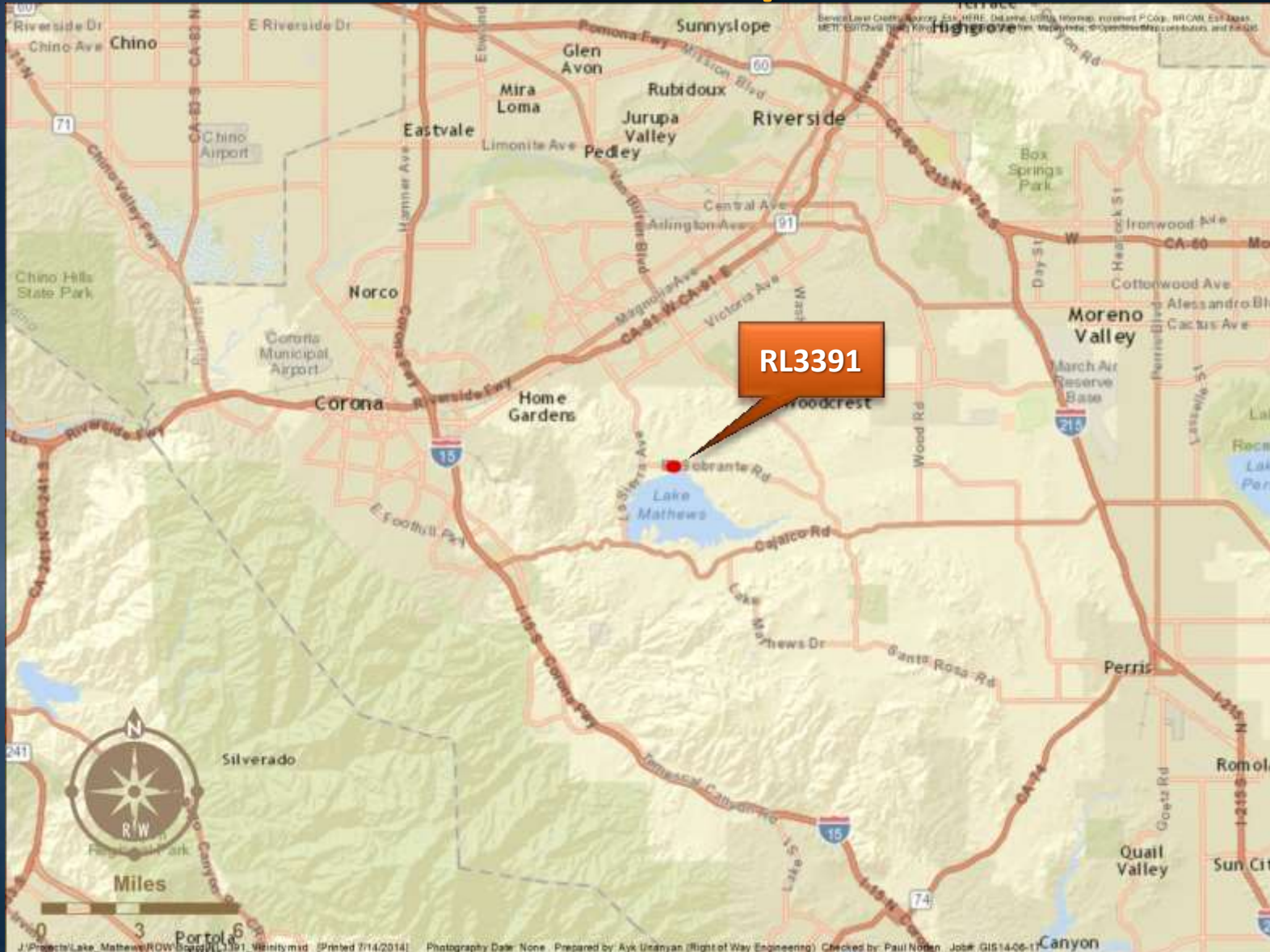
Authorize an Easement on Metropolitan Property

Real Property & Asset Management Committee
Item 7-6
October 11, 2016

General Location Map



General Location Map



Site Map – Lake Mathews



Proposed Easement – Lake Mathews

- Will allow installation of SCE guy wires and anchors at Lake Mathews
- Total of 0.0011 acre (48 square feet)
- Compensation – Appraised market value of \$1,000 plus \$2,500 processing fee
- Language is protective of Metropolitan's paramount right to use property to conduct its core business

Board Options

- Option #1
 - Adopt CEQA determination and, authorize granting a permanent easement to SCE
- Option #2
 - Do not approve the easement

Staff Recommendation

- Option #1

