



# THE METROPOLITAN WATER DISTRICT OF SOUTHERN CALIFORNIA

## GENERAL MANAGER'S MONTHLY ACTIVITY REPORT JUNE 2015

June 30, 2015

This report identifies the actions and activities taking place during the month that support the objectives of the General Manager's Fiscal Year 2014/15 Business Plan.

**STRATEGIC PRIORITY:** Educate the public and stakeholders. Inform Southern California about the drought/water supply conditions and how they can help improve water supply reliability through conservation actions and support water supply project.

### Content by Group:

BAY-DELTA INITIATIVES	2-3
BUSINESS TECHNOLOGY	3-5
CHIEF FINANCIAL OFFICER	5-6
ENGINEERING SERVICES	7-9
EXTERNAL AFFAIRS	10-13
HUMAN RESOURCES	14-15
REAL PROPERTY DEVELOPMENT & MANAGEMENT	16-17
WATER RESOURCE MANAGEMENT	18
WATER SUPPLY CONDITIONS	19
WATER SYSTEM OPERATIONS	20-27

### Governor Brown

Governor Jerry Brown attended the June 9, Board of Directors meeting. He told the Board, Metropolitan is stepping up and meeting the challenges posed by the ongoing drought. Visiting Metropolitan for the second time in a year and a half, the Governor specifically cited the half-billion dollars Metropolitan and its member agencies have allocated for conservation, including Metropolitan's \$450 million two-year conservation budget to meet unprecedented demand. Brown said Metropolitan's conservation budget "is to be commended," describing it as an "investment in our future."

In his discussion with the Board, the Governor also said construction of twin tunnels in the Sacramento-San Joaquin Delta to move water more reliably to the State Water Project was critical for California as the existing system is at risk of failure from climate change, earthquakes and vulnerable levees.



# BAY DELTA INITIATIVES

## CORE: BAY DELTA SOLUTIONS

Develop near- and long-term solutions that enhance the Delta ecosystem, improve water supply reliability, and protect water quality.

**Develop near-term measures, compatible with a long-term Delta solution, to improve water supply reliability and water quality, and facilitate protection and enhancement of Delta ecosystems and associated species.**

State Water Resources Control Board—The SWRCB has issued several curtailment notices directing water diverters in the Delta watershed to cease diversions. As reported previously, curtailment notices were issued for all Term 91 and post-1914 water rights in the Sacramento-San Joaquin River watershed and Delta. On June 12, the SWRCB issued a new curtailment notice for pre-1914 appropriative claims commencing during or after 1903 within the Sacramento-San Joaquin River watershed and Delta. Those who are found to be diverting water beyond what is legally available to them may be subject to administrative fines, cease and desist orders, or prosecution in court.

The State Water Contractors filed a complaint on June 16, 2015, requesting the SWRCB take action to protect State Water Project releases from unauthorized diversions of stored project water in the Delta. These unauthorized diversions by water diverters south of the San Joaquin River threaten to increase the burden on limited stored water supplies, affecting both the environment and other water users. Estimates show that last year landowners potentially diverted as much as 300,000 acre-feet of water in excess of their water rights.

As previously reported, the SWRCB considered a Temporary Urgency Change Petition (TUCP) submitted by the California Department of Water Resources and the U.S. Bureau of Reclamation in January 2015, requesting temporary changes to the terms of the water rights permits for operation of the SWP and Central Valley Project (CVP) for February and March 2015. Following a March 2015 request from DWR and USBR, on April 6, 2015, the SWRCB issued a revised order for the April through June 2015 time period that identified the need for a salinity barrier. DWR completed installation of the salinity barrier across West False River in

the western Delta on May 28, 2015. On May 21, 2015, DWR and USBR submitted a TUCP renewal request for changes to Delta flow and salinity requirements for July through September 2015. The SWRCB Executive Director is expected to act on the May 21, 2015 request before July 1, 2015.

Pursuant to the TUCP, USBR was required to develop and implement a Temperature Management Plan for the Sacramento River to ensure that CVP operations will provide reasonable protection for winter-run Chinook salmon and other salmonids. The Plan was provisionally approved by the SWRCB and fishery agencies. On May 29, 2015, the Executive Director of the SWRCB met with staff from USBR, DWR, and the fisheries agencies to discuss (1) updated data indicating that Shasta reservoir temperatures were warmer than expected; and (2) associated modeling information showing that it was unlikely that the temperature target would be met with the operations provisionally approved two weeks earlier. Following the May 29, 2015 meeting, the provisional approval of the draft temperature management plan submitted in April 2015 was temporarily suspended and USBR was directed to reduce releases from Keswick Reservoir below Shasta Lake to conserve cold water supplies.

SWRCB staff continues to work with USBR, DWR, and the fisheries agencies to develop a new plan of operations to protect winter-run Chinook salmon, and they have reached agreement on the basic elements of a revised plan. The revised plan will rely on real-time decision making and, due to lower releases from Shasta, will affect system-wide CVP and SWP operations and water supplies. The SWRCB held a workshop on June 24 for USBR and others to provide information on Shasta temperature operations and the associated water supply effects of these operations. Staff is monitoring these activities closely, as the revised temperature management plan could have impacts to State Water Project operations and water supplies.

# BAY DELTA INITIATIVES

## CORE: BAY DELTA SOLUTIONS continued...

**Ensure that Delta emergency response measures are implemented, including actions to develop a fresh water pathway after a major emergency event in the Delta.**

Delta Emergency Preparedness—DWR and the U.S. Army Corps of Engineers released their “Draft Delta Emergency Operations Integration Plan” for stakeholder review. This document, recently prepared by means of a Memorandum of Agreement between these agencies, defines how Army Corps and DWR personnel and resources integrate operations during flood emergencies statewide using existing plans and guidelines. It is directly applicable to flood and earthquake initiated emergencies in the Delta region.

Following the bid process, DWR plans to award contracts in late 2015 for the enhancement of rock stockpiles and materials, loading facilities and warehousing facilities at DWR, Stockton, and Rio Vista stockpile sites. Rock recently used for the False River barrier for Delta salinity control in response to drought conditions will be placed at the Rio Vista emergency stockpile site following removal of the barrier in late 2015. DWR also advises that the funding agreement for Bacon Island levee improvements, which will enhance levee stability on Old River along the island’s western perimeter, has been sent for execution to the Bacon Island Reclamation District.

# BUSINESS TECHNOLOGY

## CORE: BUSINESS PROCESSES AND INFORMATION TECHNOLOGY

Advance continuous business process improvements to improve effectiveness and efficiency while striving for innovation, flexibility, and integration with technology.

**Upgrade and refurbish Information Technology applications and infrastructure to ensure system reliability and performance levels that meet customer needs.**

Enterprise UNIX Servers—In June, two new enterprise Unix servers were deployed that will support the Oracle Financials, PeopleSoft, and Oracle Database Upgrade projects.

Emergency Radio Communications System Upgrade—The project team completed the testing of the radio communications system within the implementation phase of the project and selected the contractor for installation of the system. Installation is scheduled to begin this month and be complete by the end of 2015.

PeopleSoft HR system—In June, staff continued to assess the PeopleSoft HR environment in preparation for final user acceptance testing of all functionalities. The system is currently targeted to go live in mid-July.

Hiram Wadsworth Pumping Plant—Staff completed the functional design documents for the protective relay system, communications network, the drive controllers, and the automatic voltage regulator system. Testing of the pumping and power generation to obtain the performance characteristic of the units was also finalized. This “fingerprint testing” is used to determine the electrical parameters of unit operation. After the control system upgrade is completed, the result of the new unit is measured against the previous performance and parameters.

# BUSINESS TECHNOLOGY

## CORE: BUSINESS PROCESSES AND INFORMATION TECHNOLOGY continued...

### **Maintain an effective Business Outreach Program for regional, small businesses and veterans to ensure broad participation and competitive costs.**

Supported Member Agencies, State of California, the Southern California business and Veteran business communities, and innovation technology and academic communities with the following activities:

- Asian American Architects and Engineers Scholarship Event—The non-profit organization is aimed at providing opportunities and scholarships for students pursuing a career in architecture, engineering or construction.
- UCLA Anderson School of Management's Entrepreneurship Boot Camp for Veterans with Disabilities—Twenty-four military personnel injured in the line of duty received education and training in entrepreneurship and small business management free of charge.
- National Association of Women Business Owners at the Los Angeles Chapter's Conference, Expo and 2015 Annual Leadership and Legacy Awards.
- U.S. Small Business Administration's 52nd Annual Small Business Week Award Celebration in San Diego.
- U.S. Small Business Administration's Annual Small Business Awards and Training in Los Angeles.
- California Small Business Day Awards Ceremony and Expo, Sacramento—Over 120 small businesses were recognized for contributions to their communities by State Legislature and the Governor.
- Southwest Water and Energy Consortium, Los Angeles.
- The Energy Network, Los Angeles—Public Agencies Taking Action to Save Energy.
- Los Angeles City College and Goldman Sachs 10,000 Small Business Program, Los Angeles.
- American Indian Chamber Annual Luncheon, Los Angeles.

### **Implement innovative solutions for customers that will positively impact their business operations through improved quality, speed, simplicity, and cost improvements.**

Digital Signature Application—The digital signature project was successfully completed and expansion to additional business processes is planned for Fiscal Year 2015/16. The digital signature application will allow Metropolitan to reduce paper usage and increase efficiency in keeping electronic data.

### **Continue innovative sustainability efforts in business practices, including Spring Green, Our Legacy Newsletter, the rideshare program, energy conservation and recycling efforts.**

Headquarters Facility Energy Conservation Initiatives—All energy efficiency projects identified for Metropolitan's Headquarters Building in FY 2014/15 have been completed. These projects included:

- Comprehensive energy audit
- Retrofitting the parking garage for LED lighting
- Replacement of all stairwell lighting with LED bulbs

### **Simplify access to business information**

Metropolitan's Web Redesign Project—The new redesigned Metropolitan home website was launched in early June. The new website is the culmination of effort and collaboration between Metropolitan staff. Information on the new site has been reorganized in a more reader-friendly manner, making the website easier to navigate.

### **Efficiently maintain and operate Metropolitan's Headquarters building, the Diamond Valley Lake Visitor Center, and the Diamond Valley Lake Education Center**

All refurbishment and renovation projects identified for Metropolitan's Headquarters Building for FY 2014/15 have been completed. Projects included:

- Updated the Central Plant controls
- Replaced carpet in cafeteria
- Repaired and replaced broken patio tiles and 6,000 linear feet of new caulking
- Installed double-stacked steam injection oven in cafeteria

# BUSINESS TECHNOLOGY

## CORE: BUSINESS PROCESSES AND INFORMATION TECHNOLOGY continued...

### **Foster a culture of innovation.**

Staff partnered with The Port of Long Beach, The City of Long Beach, MetroLink and Planet Bids to hold one user group meeting to accomplish the goals of adopting uniform small business certification procedures, streamline processes, solve Small Business Enterprise Certification issues, and apply best practices in SBE certification.

Business Outreach's Innovation and Technology Team held one meeting of the California B2B Alliance which included participants from the Valley Economic Alliance, Los Angeles Mayor's Office, Los Angeles County, and the Small Business Community. The group is planning to introduce the B2BconnectR Platform to the public.

### H2O TechConnect Community

- On June 17-18, staff held its first H2O TechConnect Innovation and Technology Tour of Metropolitan facilities to help educate community members on the seriousness of the drought; to encourage the development of new water conservation and water innovation technologies; and to become advocates for Metropolitan's drought awareness campaign.
- Staff was invited to give a presentation on Metropolitan's Innovation and Technology Program to member agency water quality managers about available resources, including the TAG Program, H2O TechConnect conferences, workshops and web portal, and internal H2O TechTalk workshops.
- On June 10-12, staff participated in the ACE15 Conference and Exposition, *Uniting the World of Water*.

# CHIEF FINANCIAL OFFICER

## CORE: FINANCIAL MANAGEMENT

Manage Metropolitan's finances in an ethical and transparent manner and provide consistent, clear, and timely financial reporting. Update Metropolitan's capital financing plans and work with rating agencies and investors to communicate Metropolitan's financial needs, strategies, and capabilities thus ensuring Metropolitan has cost-effective access to capital markets and the ability to finance ongoing future needs. In addition, actively manage Metropolitan's short term investment portfolio to meet ongoing liquidity needs and changing economic environments.

### **Record and report the financial activities of Metropolitan in a timely, accurate, and transparent manner to the Board, executive management, member agencies, and the financial community.**

Financial activities were recorded in a timely and transparent manner.

### **Prudently manage the investment of Metropolitan's funds in accordance with policy guidelines and liquidity considerations.**

Staff continues to provide the necessary liquidity for Metropolitan's operational and capital expenditures with no loss of principal and no policy violations, while generating a portfolio return that exceeded the benchmark.

## CFO PRIORITY: BUSINESS CONTINUITY

Facilitate district-wide planning and training to prepare employees and managers to effectively carry out critical roles and functions thus ensuring continuity of operations in the event of a disaster.

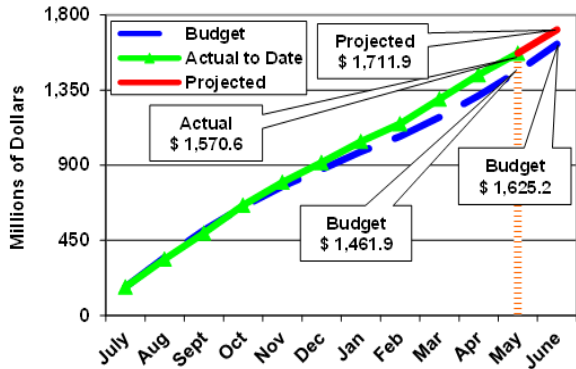
### **Manage Business Continuity Program in accordance with Operating Policy A-06.**

Work continued on implementation of the Fusion Framework Business Continuity Program Management system. Functionality was tested and data from Metropolitan's recently completed Business Impact Analysis was loaded into the system. Work commenced on the design of Business Continuity Plan functionality in the system. Implementation and district-wide roll-out is expected in August.

# CHIEF FINANCIAL OFFICER

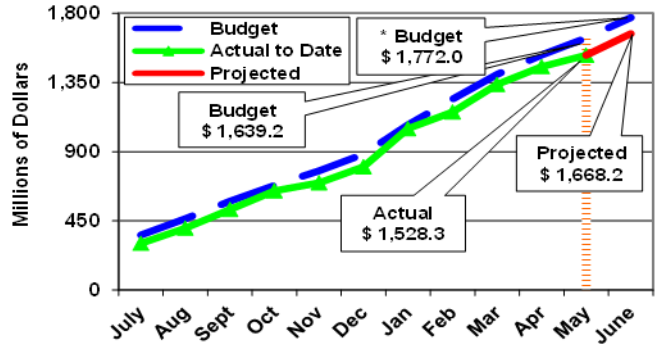
## FINANCIAL SUMMARY AS OF MAY 31, 2015

Revenues are expected to be \$ 87 million over budget at year end, mainly due to higher water sales.



Excludes bond construction and other trust funds activity

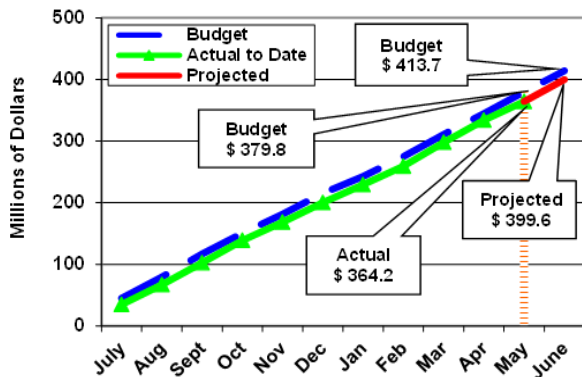
Expenses are expected to be \$104 million lower than budget by year end, mainly due to lower SWC and debt service costs, partially offset by higher demand management and CRA power costs.



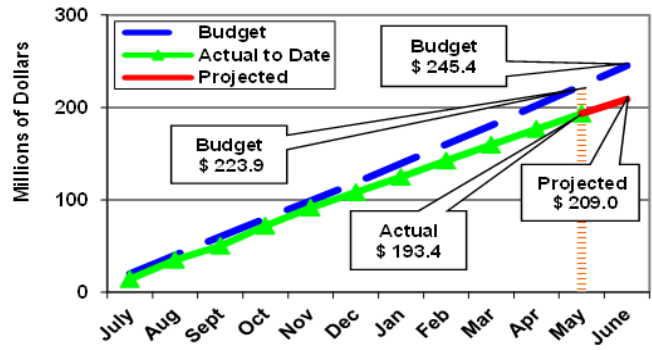
Excludes bond construction and other trust funds activity

\* Includes \$72.6M and \$61.8M Board-approved increase for Water Supply Programs and Conservation, respectively.

O&M expenses are expected to be \$14 million below budget at year end, mainly due to lower labor and chemical costs.



The YTD construction variance is primarily due to the long permitting timeline for refurbishing the Palos Verdes Reservoir cover, liner, and outlet tower; and lower than planned progress payments on several construction contracts.



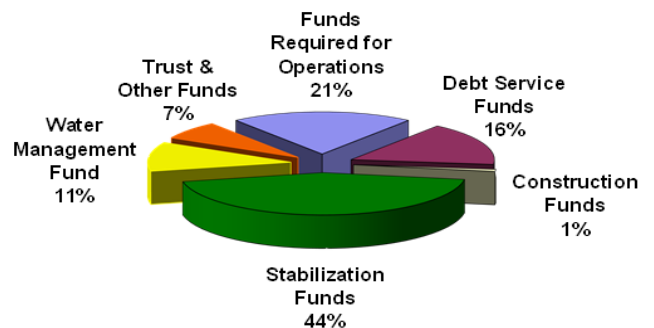
### Summary Financial Statistics

	Target	Year-End Projected
Fixed Charge Coverage	≥ 1.20 x	2.18 x
Revenue Debt Service Coverage	> 2.00 x	2.61 x
Revenue Bond Debt / Equity Ratio	< 100.0%	57.9%

### Credit Ratings

	Target	Actual
- Moody's Investors Service	Aa2	Aa1
- Fitch Ratings	AA	AA+
- Standard & Poor's	AA	AAA

### Cash and Investments at Fair Value \$ 1,564.2 million



# ENGINEERING SERVICES

## CORE: INFRASTRUCTURE RELIABILITY

Manage Board-authorized projects in the Capital Investment Plan and collaborate with the Water System Operations Group to identify and address system vulnerabilities to ensure reliability of the region's water treatment and delivery infrastructure. In addition, coordinate closely with WSO to integrate project planning and facility assessment efforts with near-term actions and planned shutdowns.

**Manage and complete Board-authorized projects within the CIP to ensure the reliable delivery of water to Metropolitan's member agencies.**

### Distribution System Reliability Program

This program maintains reliable water deliveries through specific repair and rehabilitation projects on Metropolitan's pipelines, reservoirs, and control structures. Recent activities include the following:

- Orange County Feeder Relining—This project replaces the deteriorated internal lining along an 11-mile portion of the Orange County Feeder within the cities of Santa Ana, Costa Mesa, and Newport Beach. Final design for Phases 1 and 2 is 99 percent complete and is scheduled to be complete by August 2015. Final design for Phase 3 is five percent complete and is scheduled to be complete by May 2016.
- Orange County Feeder Relocation within the city of Fullerton—This project relocates 1,100 feet of the Orange County Feeder to accommodate major street improvements planned by the city of Fullerton. A 7-day shutdown was completed to make the final tie-in. Overall construction is 95 percent complete and is scheduled to be complete by July 2015.
- Collis Ave Valve Replacement—This project replaces the existing 42-inch spherical valve with a new 42-inch multi-orifice valve that will provide more effective flow and pressure control. Final design is 80 percent complete and is scheduled to be complete by October 2015.
- Palos Verdes Reservoir Cover and Liner Replacement—This project replaces the existing floating cover and liner, and modifies the existing spillway, control tower, and outlet structures. Final design was completed in June 2015 and the project is planned to be advertised for bids in July 2015.
- Santa Ana River Bridge Seismic Retrofit—This project strengthens the Santa Ana River Bridge, which supports an above-ground portion of the Upper Feeder as it crosses the streambed. Final design was completed in May 2015, and a request to the Board to award a construction contract is planned for August 2015.
- Lakeview Pipeline Rehabilitation—This project installs a steel liner within the Lakeview Pipeline to strengthen

the pipe and prevent water leakage. Preliminary design is 95 percent complete and is scheduled to be complete by August 2015.

### Right of Way and Infrastructure Protection Program

This program performs needed site improvements within the distribution system such as erosion protection for pipelines and access roads. It also addresses right-of-way issues such as access easements and third-party encroachments and obtains long-term programmatic environmental permits to cover the entire conveyance and distribution system. Recent activity includes:

- Orange County and Western San Bernardino County Operating Regions—Final design of improvements is 45 percent complete and is scheduled to be complete by December 2015. Identification of required right of way is 96 percent complete and is scheduled to be complete by May 2015. The draft Environmental Impact Report for the Orange County operating region is 95 percent complete and is scheduled to be released for public review and comment by August 2015.
- Los Angeles County Operating Region—Preliminary design of improvements is 35 percent complete and is scheduled to be complete by October 2015.
- Riverside/San Diego County Operating Region—Preliminary design of improvements is 10 percent complete and is scheduled to be complete by December 2015.

### Prestressed Concrete Cylinder Pipe (PCCP) Reliability Program

This program was established to enhance the reliability of Metropolitan's water distribution system and to reduce the risk of costly emergency repairs of PCCP lines. Recent activities include the following:

- Second Lower Feeder PCCP Rehabilitation—This project rehabilitates the remaining 28 miles of existing PCCP segments within the Second Lower Feeder. Final design for procurement of steel liner and large-diameter valves is underway and is scheduled to be complete in 2016. A programmatic environmental impact report for rehabilitation of five PCCP feeders is scheduled to be released for public review and comment in late 2015.

# ENGINEERING SERVICES

## CORE: INFRASTRUCTURE RELIABILITY continued...

### Colorado River Aqueduct (CRA) Reliability Program

This program maintains the reliability of Metropolitan's Colorado River Aqueduct delivery system. Recent activities include the following:

- CRA Canal Improvements—This project improves curbs and lining along portions of the open canal. Final design is 95 percent complete and is scheduled to be complete by July 2015.
- Gene Warehouse Storage Replacement—This project replaces deteriorated storage buildings located at Gene Pumping Plant with two new storage buildings. Construction is 95 percent complete and is scheduled to be complete by July 2015.
- Copper Basin and Gene Wash Dam Discharge Valves—This project replaces the emergency discharge valves and rehabilitates the discharge structures at

Copper Basin and Gene Wash Reservoirs. These facilities are used to draw down the reservoirs in the event of an emergency. Final design is 12 percent complete and is scheduled to be complete by June 2016.

- Desert Wastewater System Replacement—This project replaces the wastewater collection systems and community septic tanks at all five CRA pumping plants. Construction at the Hinds and Eagle Mountain Pumping Plants is ten percent complete and is scheduled to be complete by February 2016. Final design for the Iron Mountain and Gene Pumping Plants is 60 percent complete and is scheduled to be complete by December 2015. Preliminary design at Intake Pumping Plant is 50 percent complete and is scheduled to be complete by October 2015.

### Water Quality/Oxidation Retrofit Program

This program adds ozonation facilities which reduce disinfection by-products and improve water quality at Metropolitan's five water treatment plants. Recent activities include the following:

#### Weymouth Oxidation Retrofit Project

- Main ORP Facilities—The Weymouth plant is the final facility to be upgraded under the ORP. Construction of the ozonation system is 78 percent complete and is scheduled to be complete in late 2016.

#### Diemer Oxidation Retrofit Project

- Diemer ORP—Operational testing of the ozonation system continues with full operation scheduled to commence in July 2015. Revegetation of the plant's south-facing slope is underway, with construction scheduled to be complete by February 2016.

### Treatment Plant Reliability Program

This program was initiated to maintain reliability and improve the operating efficiency of Metropolitan's five water treatment plants through specific improvement projects. Recent activities include the following:

#### Diemer Plant

- Electrical Upgrades, Stage 2—This project replaces electrical equipment, improves backup capability, and upgrades the plant's electrical system to be consistent with current codes and industry practices. Construction is 64 percent complete and is scheduled to be complete by April 2016.
- Yorba Linda Power Plant Turbine Replacement—This project replaces the existing Pelton wheel turbine with a Francis turbine capable of operating under post-ORP hydraulic conditions. Manufacture of the turbine generator is complete and the equipment has

been delivered to the site. Construction is 88 percent complete and is scheduled to be complete by October 2015.

- East Filter Upgrades—This project upgrades the plant's east filters, including replacement of 127 deteriorated valves with Metropolitan-furnished AWWA-standard valves and seismic strengthening of the filter buildings. A construction contract was awarded by the Board in February 2015. Construction is nine percent complete and is scheduled to be complete by November 2016.



# ENGINEERING SERVICES

## CORE: INFRASTRUCTURE RELIABILITY continued...

### Treatment Plant Reliability Program continued...

#### Weymouth Plant

- Washwater Reclamation Plant Upgrades—This project replaces deteriorated equipment in the plant's washwater reclamation plant. Construction is 99 percent complete and is scheduled to be complete by August 2015.
- East Washwater Tank Seismic Upgrades—This project upgrades the plant's east washwater tank to improve its ability to withstand a major seismic event. Construction is 67 percent complete and is scheduled to be complete by November 2015. *(see photo right)*
- Filter Rehabilitation—This project replaces the internal components of the plant's 48 filters, including the underdrains, media, launder troughs, and surface wash systems. Notice to Proceed was issued to the contractor in May 2015.



Weymouth East Washwater Tank Seismic Upgrades—Preparations for sandblasting and coating of new tank anchorage system.

#### Jensen Plant

- Washwater Tank Seismic Upgrades—This project upgrades two washwater tanks to increase their capability to withstand a major earthquake. Construction is 77 percent complete and is scheduled to be complete by October 2015.
- Jensen Solids Transfer System—This project enables Metropolitan to use four solids lagoons on the grounds of the Los Angeles Aqueduct Filtration Plant. The initial construction contract is installing 7,600 feet of solids transfer piping and a utility crossing structure across Bull Creek Channel. Construction is 80 percent complete and is scheduled to be complete by September 2015.
- LADWP Lagoon Refurbishment—This project rehabilitates four LADWP lagoons which will be used by Metropolitan. Construction is 12 percent complete and is scheduled to be complete by April 2016.
- Module No. 1 Filter Surface Wash Upgrades—This project replaces the existing surface wash system with a new fixed nozzle system. During filter backwashing, the top surface of a filter bed is sprayed with water to break up the solids that accumulate during the filtration process. Construction was complete in June 2015.
- Module No. 1 Filter Valve Replacement—This project replaces 78 deteriorated filter valves within Module No. 1 with new Metropolitan-furnished AWWA-standard valves. Notice to Proceed was issued

in February 2015. Construction is 10 percent complete and is scheduled to be complete by October 2016.

- Electrical Upgrades, Stage 1—This project replaces electrical equipment, provides backup in the event of individual component failures, and upgrades the electrical system to be consistent with current codes and industry practices. Final design is 90 percent complete and is scheduled to be complete by October 2015. Replacement of Unit Power Center UPC-7 was completed in May 2015.

#### Mills Plant

- Bromate Control—Chloramine addition is utilized to control the formation of bromate as a disinfection by-product of the ozone disinfection process. The bromate control facilities will reduce annual chemical and ozone production costs. Final design of the bromate control facilities is 55 percent complete and is scheduled to be complete by December 2015.
- Chemical Unloading Facility Chlorine Containment—This project constructs chlorine containment facilities, including containment building, chlorine transloading system, chlorinator and evaporator system, scrubber system, control building and emergency generator. Construction is 29 percent complete and is scheduled to be complete by February 2017.

# EXTERNAL AFFAIRS

## **STRATEGIC PRIORITY: EDUCATE THE PUBLIC AND STAKEHOLDERS ON CRITICAL WATER SUPPLY CONDITIONS AND CRITICAL WATER MANAGEMENT DECISIONS**

External Affairs efforts will focus on educating the public, legislative leaders, government officials, non-governmental organizations, and other stakeholders on critical water supply conditions and critical water management decisions.

### **Expand and enhance Metropolitan's outreach to key stakeholder groups in Southern California, statewide, nationally and internationally in support of strategic priorities.**

- GM Kightlinger was a panelist at the Los Angeles Times Book Club discussion of *Cadillac Desert* written by Marc Reisner, and spoke about the loss of water supply due to climate change. (June 7)
- GM Kightlinger and staff made presentations at the national American Water Works Association conference in Anaheim to several hundred water professionals and elected officials attending the three-day event. Additionally, Metropolitan organized a tour of the Weymouth water quality lab for attendees and staffed an exhibit hall booth at the conference (June 8 -10)
- Chairman Record provided opening remarks on drought and water supply reliability to 150 local elected officials and business leaders at the Association of California Cities Orange County Annual Infrastructure conference. (June 12)
- Co-hosted the Congressional Invasive Species Caucus' second annual awards program in Washington, D.C. to honor those whose achievements are protecting the economy, environment and public health from invasive species. Several members of the California congressional delegation attended this event. (June 25)

### **Inform Southern Californians about the drought/water supply conditions and how they can help improve water supply reliability through conservation actions and support for water supply projects.**

- Governor Jerry Brown spoke at Metropolitan's board meeting on drought conditions and climate change. Following the meeting, Chairman Record and GM Kightlinger held a press conference to discuss Metropolitan and state actions to address conservation and water supply issues. (June 9)
- Weather and traffic radio spots promoting water conservation aired in June on general market stations in English and Spanish, Chinese, Vietnamese and Korean language stations throughout the Los Angeles, Riverside/San Bernardino, Oxnard/Ventura and San Diego media markets.
- Prepared online file sharing site for member agency public information officers to provide easy access to photographs and other materials for Metropolitan's 2015 *Let's All Take a Turn* water conservation campaign. Prepared bill stuffer template for Metropolitan's member agencies and postcard template for realtor organizations with Turn campaign elements.
- Media interest in Southern California's response to record drought conditions continues to generate a large number of requests for print, TV and radio interviews. Metropolitan's senior management, led by GM Kightlinger, were interviewed by CNN, Washington Post, Associated Press, KABC-TV, San Jose Mercury-News, LA Daily News, L.A. Weekly, San Diego Union-Tribune, Voice of San Diego, NPR Marketplace, KNX-AM radio KCRW public radio, UBN Radio (podcast), World Journal Chinese Daily News and This Old House magazine.
- Arranged television interview with producer of *Thirsty Land* documentary and GM Kightlinger to discuss water challenges facing Southern California and the West.
- Sponsored and helped support *Innovation Games: Water*, an online collaborative project to share information on water-related issues and technologies that manage and conserve water.
- Drafted and published General Manager blog on updated turf rebate and other conservation programs.
- Staff made a presentation on drought conditions as part of a commercial building webinar for over 100 building managers and engineers. (June 4)
- Staff made presentation on the drought and conservation to the Yorba Linda Women's Club. (June 18)
- Staff presented information on Metropolitan's conservation rebates and drought information at the Sierra Club Water Forum in San Fernando Valley. (June 20)
- Staff participated in a panel discussion on statewide and regional drought for the Citrus Valley Association of Realtors in Rancho Cucamonga. (June 22)

# EXTERNAL AFFAIRS

## **STRATEGIC PRIORITY: EDUCATE THE PUBLIC AND STAKEHOLDERS ON CRITICAL WATER SUPPLY CONDITIONS AND CRITICAL WATER MANAGEMENT DECISIONS** continued...

### **Inform Southern Californians about the drought/water supply conditions and how they can help improve water supply reliability through conservation actions and support for water supply projects, continued...**

- Staff made presentation to the Kiwanis Club of San Fernando on the current drought and actions that Metropolitan and state government agencies are taking to address water supply impacts. (June 23)
- Staff moderated a panel discussion on rain gardens and outdoor conservation at the Los Angeles Neighborhood Initiative annual community forum event. (June 23)
- Staff presented at the Pacific Coast Builders Conference (PCBC) in San Diego. The presentation, “New Requirements, New Innovations in Water Conservation,” outlined the current water supply situation and actions at the local, regional and state level to comply with the Governor’s Executive Order. Additionally, Metropolitan sponsored the PCBC California Water Forum, which highlighted the need for more conservation efforts within the home building industry. (June 24-25)
- Sponsored two water conservation workshops organized by Stage of the Arts. (June 20 and June 25)

## **CORE: LEGISLATIVE, COMMUNICATIONS AND COMMUNITY RELATIONS**

Engage the public, labor, business community, agriculture, government leaders, non-governmental organizations, and other stakeholders in California’s water issues, communicating Metropolitan’s interests and Board-adopted policies through federal and state legislative strategies, multimedia and multi-cultural communications, and educational and other outreach programs.

### **Develop and implement local, state, and federal water policy and legislative strategies consistent with Board-adopted policies.**

#### FEDERAL

- On June 2, the Senate Energy and Natural Resources Committee held a hearing on the impacts of drought conditions throughout the western United States, which included discussion of developing a federal legislative action plan to authorize strategies, assistance and possible new projects.
- Transmitted letters of support to the sponsors of S.460 (Portman, R-OH) and H.R. 212 (Latta, R-OH), legislation that amends the Safe Drinking Water Act and directs the U.S. Environmental Protection Agency to develop a strategic plan for the risk assessment and management of cyanotoxins in drinking water. (June 16)

#### STATE

On May 14, Governor Brown released his May Revise for the state budget to the Legislature, an update of revenue and expenditure projections since the Governor’s release of his FY 15/16 spending plan to the Legislature in January. Significant funding was proposed in the natural resource and environmental protection program areas of the budget, including:

- \* \$2.2 billion of one-time resources from Proposition 1, Cap-and-Trade, General Fund and Special Funds to continue immediate response to the historic drought.
- \* \$7.8 million from the General Fund and Water Rights Fund to accelerate and complete the comprehensive update of the Bay-Delta Water Quality Control Plan and to implement the plan within the adaptive management framework to support Delta water supplies and ecosystem resources.

On June 16, Governor Brown announced a budget agreement with Assembly Speaker Atkins and Senate President pro Tem de León. Governor Brown also announced he is calling two special sessions on transportation funding and MediCal. The Senate and Assembly passed the state budget on June 19.

# EXTERNAL AFFAIRS

## CORE: LEGISLATIVE, COMMUNICATIONS AND COMMUNITY RELATIONS continued...

**Develop and implement local, state, and federal water policy and legislative strategies consistent with Board-adopted policies.** continued...

### STATE

#### Drought Relief Legislation

Governor Brown proposed a dozen budget trailer bills to accelerate projects and improve state and local agencies' ability to respond to the drought, including proposals to: (1) restructure the existing fee structure for support of the State Water Resources Control Board's drinking water program; (2) exempt certain drought-related projects that are approved during a declared state of emergency from California Environmental Quality Act; and (3) authorize the SWRCB to require consolidation of water systems where one system consistently fails to provide adequate supply of safe drinking water. Metropolitan staff provided testimony in budget subcommittee on the trailer bills consistent with board policy and otherwise provided updates to member agency legislative coordinators to facilitate their direct input and engagement.

#### Key Legislative Deadlines

- \* July 17: Last day for policy committees to meet and report bills; summer recess begins upon adjournment
- \* August 17: Legislature reconvenes from summer recess

**Support board member and executive management communications and working relationships with elected officials, other government leaders, business, agriculture, non-governmental organizations, community leaders and other stakeholders to improve awareness and understanding of water policy issues.**

- Metropolitan Directors Abdo, Peterson and Wunderlich and staff participated in Heal the Bay's 30th Anniversary awards event in Santa Monica, along with 1,200 community leaders and elected officials. (June 4)
- Committee Chair Dick, Vice Chair Beard and Directors De Jesus, Faessel, McKenney and Vasquez participated in the Agriculture and Industry Relations Committee tour of Marcel Electronics International, which manufactures advanced technology rigid printed circuit boards, and Giuliano's Specialty Foods to discuss water-use efficiency projects. (June 26)
- Staff participated in the announcement of Assemblyman Gatto's new YMCA Youth and Government Program in Burbank. (June 19)

**Provide a suite of educational products and programs to educate students about water and foster water stewardship in younger generations.**

General education activities reached over 1,250 students:

- Provided educational curriculum and materials for about 270 students (grades K-12) at three Orange County schools and the USD – CARES after school programs.
- Hosted field trips for students from Hollywood High School, Watts Charter Middle School, Wilson Elementary School, STEM Academy of Hollywood, and Mountain Avenue Elementary School.
- Supported educational events including the State of California Next Generations Science Standards Meeting, Inspired Garden Water Conservation Event, Youth Education & Outreach-Center for Sustainable Energy, and San Fernando Public Works Event.
- Provided educational products to support the Rincon Water District and the City of Escondido Fire Department's annual Fire Safety Open House.

Education Website—There were approximately 3,730 unique visits to the Education website from May 14 – June 11, 2015.

Diamond Valley Lake Education Program—Facilitated school workshops and tours for approximately 935 students from Harmony Elementary, Romoland Elementary, William Collier Elementary, Elsinore Elementary and Ysabel Barnette Elementary. Hosted more than 900 visitors at the DVL Visitor Center.

# EXTERNAL AFFAIRS

## CORE: LEGISLATIVE, COMMUNICATIONS AND COMMUNITY RELATIONS continued....

Support Metropolitan's operations through communication and outreach to various stakeholders (including local government agencies and utilities) regarding water resources; water supply system operations and maintenance; water quality protection and water treatment; infrastructure replacement, refurbishment and development; and emergency management.

Staff met with representatives of the City of Jurupa Valley to discuss community outreach for the upcoming Santa Ana River Bridge Project.

**Provide public outreach in coordination with member agencies to increase awareness of water issues and communicate Metropolitan's interests and Board-adopted policies.**

- Opened Metropolitan's newly renovated exhibit at the California Department of Water Resources' Vista del Lago Visitor Center at Pyramid Lake. (June 18) *(see photos below)*
- Arranged interviews and provided information to Riverside Press-Enterprise and Marina Dock Age trade magazine for stories about the construction of extended boat ramps at Diamond Valley Lake.
- Arranged interviews with San Diego Union-Tribune reporter for stories about the drought's impact on the Colorado River and how Metropolitan, other agencies in the West, and Mexico are working together on conservation of Colorado River water.
- Set-up television interview with CNBC reporter and Assistant General Manager/CFO Breaux to discuss the elements involved in pricing the cost of water.
- Participated in and staffed a conservation exhibit and information booth at a community meeting sponsored by Assemblyman Chris Holden. The event, *Help Out, We're in a Drought* was held at the Kidspace Children's Museum in Pasadena. (June 25)

### Press Releases:

- Issued press release about authorizing construction of a 3-megawatt solar power generating facility at the Weymouth treatment plant.
- Issued press release about Metropolitan receiving the national 2014 Public Communications Achievement Award from the American Water Works Association for its water awareness public outreach campaign.
- Issued press release about Stephen Faessel joining the Metropolitan Board of Directors representing the city of Anaheim.

### Online Activities:

- Paid online search on Google Search and the Google Content Network continued in June generating, continued growth in the number of site visits. Top search results were "water," "California weather" and "water rebates."
- More than 82,000 people visited [bewaterwise.com](http://bewaterwise.com) during the month of June for ideas and rebates to help conserve water. The *40 Days of Water Awareness* Twitter campaign organized by Coro Fellows for Metropolitan added nearly 150 new followers to [@bewaterwise20](https://twitter.com/bewaterwise20).



Exhibits at the Vista del Lago Visitor Center

# HUMAN RESOURCES

## STRATEGIC PRIORITY: EMPLOYEE DEVELOPMENT

Increase cross-training and employee development efforts to meet the challenges of increased retirements due to an aging workforce. Expand recruitment and retention initiatives to keep pace with retirements and to ensure a diverse workforce who is prepared for the future needs of Metropolitan. Define competencies critical to future needs of the organization.

### Acquire Talent

- Partnered with Hire a Patriot to strategically advertise Metropolitan positions to veterans.
- Started planning process for Request for Proposal for automated recruitment system.
- Researched and trained staff on social media and other new sourcing techniques.

### Partner with senior leadership to address future business, organizational, cultural and people challenges.

Continued discussions with HR and Group Managers on follow-up actions to the Voices Employee Survey.

### Foster management excellence.

- Completed the fourth cohort of the Leading Technical People class for managers, principal engineers and senior engineers.
- Continued to provide teambuilding and change management support for teams in Water Resource Management, Water System Operations and Engineering Services. Facilitated coaching interventions with internal staff and external coaches for five managers.
- Continued to provide Manager Briefings on conducting the training plan conversation with administrative employees as part of the preparation for district-wide rollout of the Administrative Assistant/Administrative Analyst Series Training program.

### Foster learning and organizational development to support development of internal talent pipelines.

- A series of two-hour workshops on Microsoft Word, Excel and Access software was delivered.
- Designed and coordinated delivery of the eighth session of the Water System Operations Management Academy focused on managing in a multigenerational workforce and improving managerial efficiency. *(see photo page 28)*
- Classes delivered this month include: *Project Management Essentials, Developing Emotional Intelligence, Drug and Alcohol Awareness, Microsoft PowerPoint.*
- Coordinated the scheduling and logistics for the Employee Inspection Trip of the Colorado River Aqueduct this month.

## CORE: HUMAN RESOURCES EXCELLENCE

Foster Human Resources excellence with innovative and efficient processes that attract, hire and develop the right people with the right skills at the right time; provide management with the tools to swiftly and proactively address employee issues and poor performance; enable cost-effective workforce management together with the tools to continually improve workforce skills, competencies, productivity and customer support.

### Set high-performance standards

Provided guidance to management on the upcoming year-end MyPerformance evaluation process. Started receiving and processing employee evaluations.

### Support workforce diversity

Participated as an Event Ambassador to the Employee Resource Group Forum and Elevate Summit at University of California, San Diego's Rady School of Business on June 4 and 5.

### Provide proactive, swift, and consistent employee relations and positive labor relations.

Equal Employment Opportunity Investigations also concluded a lengthy internal investigation involving alleged violations of policy with regard to internal job recruitment. Findings have been issued and reported to Management for further action.

# HUMAN RESOURCES

## CORE: HUMAN RESOURCES EXCELLENCE continued...

### Control Workers' Compensation Costs.

- Conducted initial investigations on 13 injury incidents.
- Submitted 11 new claims to Metropolitan's workers' compensation claim administrator.
- Settlements were negotiated in 2 claims, finalized in 6 claims, and 3 claim files were closed.
- Arranged 9 medical evaluations (DMV, medical surveillance, hearing conservation, etc.).
- Conducted MedVan evaluations at Jensen facility.
- Addressed 2 accommodation issues.
- Coordinated random drug/alcohol tests at 4 facilities.

### Identify, assess and manage risk.

- The Risk Management Unit completed 46 incident reports communicating instances of Metropolitan property damage, liability, workplace injuries, regulatory visits and spills.
- Risk Management completed 55 risk assessments on contracts, including professional service agreements, construction contracts, entry permits, special events and film permits.

## METROPOLITAN RETIREES FOR THE PERIOD — JANUARY - MAY 2015

Last	First Name	Classification	Eff Date	Group
Ardalan	Ron	Unit Manager V	3/7/2015	BUS TECH
Sotoodeh	Rambod	Sr IT Infrastructure Adminstr	4/16/2015	BUS TECH
Lynds	Richard	Pr Info Tech Analyst (C)	5/19/2015	BUS TECH
Jemison Jr.	Napoleon	Admin Assistant III	5/22/2015	BUS TECH
Collins	Kevin	Pr Engineering Technician	3/10/2015	ENG
Weise	Mary	Admin Analyst	5/6/2015	ENG
Smith	Paul	Instrumnt & Cntrl Tech III	2/27/2015	WSO
Shamburg	Paul	O&M Tech IV	3/11/2015	WSO
Barton	Michael	Instrumnt&Cntrl Tech III	4/15/2015	WSO
Striskovich	Frank	O&M Tech IV	4/15/2015	WSO
Bicker	Rick	O&M Tech IV	5/1/2015	WSO
Foster	Gary	Instrumnt&Cntrl Tech III	5/2/2015	WSO
Yates	Richard	Team Manager VI	5/16/2015	WSO
Morales	Stephen	O&M Tech III	5/22/2015	WSO

# REAL PROPERTY DEVELOPMENT & MANAGEMENT

## CORE: REAL PROPERTY ACQUISITION, MANAGEMENT AND REVENUE ENHANCEMENT

Manage Metropolitan's real property assets with a focus on revenue enhancement while ensuring that Metropolitan's core operations are protected. Acquire real property for future operational business needs.

**Pursue development of the Diamond Valley Lake area, including the DVL Visitor Center and marina facilities, to support recreation, develop additional leasing and revenue opportunities for Metropolitan, and benefit the surrounding community.**

In FY 2014/15, Metropolitan received \$20,294 through May on the percentage lease with Urban Park Concessionaires for the operation of the DVL Marina, Lakeview Trail, and North Hills Trail. The rent received represents seven percent of the gross receipts. Diamond Valley Lake has hosted approximately 669,800 visitors at its marina facilities and 156,000 private boats have launched since the 2003 public opening.

Effective June 15, the DVL Marina is closed on Mondays and Tuesdays. The number of visitors has declined following the suspension of private-boat launching, forcing the concessionaire to operate at a loss on slower days.

Staff continues to assist with DVL Marina and DVL area improvement projects, including the DVL Boat Ramp Extension, Marina Restrooms, East Dam Electrical Upgrade, and Visitor Center Building #4 Completion.

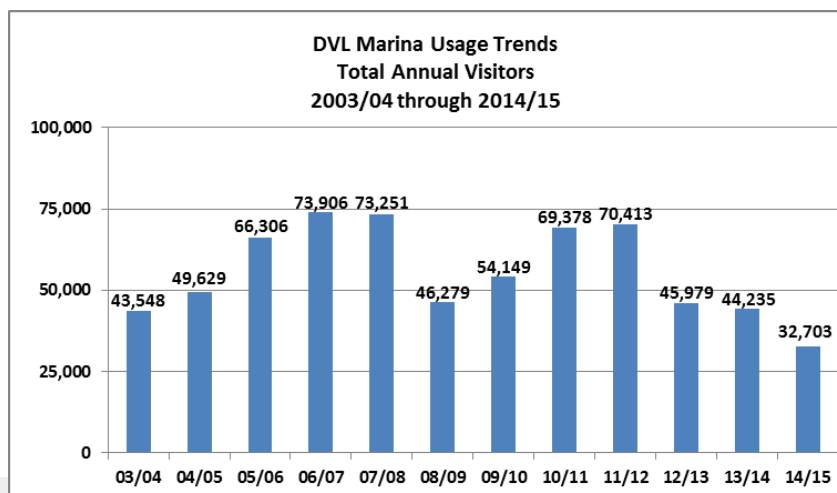
**Implement strategies for right-of-way planning and acquisition support of Bay-Delta Initiatives and infrastructure reliability and protection programs.**

- Staff completed an inspection, a rental survey, and a lease on a single-family residence for the emergency responder at Lake Mathews.
- Staff provided research and site analysis assistance to engineering design on preliminary plans to construct a new pressure control facility for the Sepulveda Feeder in the Sepulveda pass region of Los Angeles.
- Staff provided property research, valuation, and planning support to Bay Delta Initiatives related to potential near- and long-term projects in the Delta.
- Staff continued work with Legal and Engineering Services to assure that Metropolitan has appropriate access for repair projects and appropriate rights for existing and proposed facilities within the Right of Way and Infrastructure Protection Program.

### Foster staff training and development

Staff completed the following Metropolitan-sponsored training courses: *Excel 2010: Part 3; PowerPoint 2010: Parts 1 and 2; Word 2010: Part 2; Word Tips and Tricks Workshop and Agreement Administrators Workshop: Top 10 Things to Know.*

Staff attended the International Right of Way Association sponsored courses *Environmental Contamination in Real Estate, Principals of Land Acquisition, and Principals of Real Estate Law.* Staff also attended the annual IRWA International Education Conference, which was held this year in San Diego.



Note: Actuals are through June 2015; Project 45,000 visitors for FY14/15.



# REAL PROPERTY DEVELOPMENT & MANAGEMENT

## CORE: REAL PROPERTY ACQUISITION, MANAGEMENT AND REVENUE ENHANCEMENT

Manage Metropolitan's real property assets with a focus on revenue enhancement while ensuring that Metropolitan's core operations are protected. Acquire real property for future operational business needs.

**Seek revenue-generating opportunities for real estate assets in several market segments, such as telecommunications, solar development, film production, and sustainable technology and research.**

- An easement was granted to the city of Perris for public road and utility purposes across a portion of Metropolitan's Colorado River Aqueduct right of way.
- A previously issued temporary easement to Ross Stores, Inc. was amended to reduce the area used. The temporary easement covers a portion of Metropolitan's Colorado River Aqueduct right of way near Indian and Rider Avenues in the city of Perris.
- Duke Realty Limited Partnership was issued an entry permit to allow for a construction staging area on a portion of Metropolitan's Colorado River Aqueduct right of way near Indian and Rider Avenues in the city of Perris.
- An easement was granted to Southern California Edison Company for access to install, repair and maintain electrical equipment at the Robert B. Diemer Water Treatment Plant as a part of Metropolitan's project to improve power reliability.
- A Letter of Consent was issued to the San Bernardino County Sheriff's Department to allow for swift water rescue training at Lake Mathews.
- The city of San Jacinto was issued an entry permit which allows for road repair work and a temporary construction staging area for the rehabilitation of the existing Warren Road.
- An existing license granted to California TrusFrame, LLC, allowing temporary storage of roof and floor trusses on Metropolitan's property located west of the Chemical Unloading Facility in the city of Perris was amended to increase the rental area and the annual rent.
- A one-day film industry entry permit was granted to Island Pictures, LLC at Joseph P. Jensen Water Treatment Plant for use of the Module 2 tunnels to film a movie entitled *Lonely Island*. A gravel lot was also used for the film company's parking, catering and base camp.

# WATER RESOURCE MANAGEMENT

## **STRATEGIC PRIORITY: LOCAL PROJECTS AND INTEGRATED RESOURCES PLAN UPDATES**

Review Local Resources Program and conservation rebate programs during this drought period to review what new actions might be appropriate, learn from this experience as to how to improve Metropolitan programs and work with the public and member agencies on expanding conservation efforts. Metropolitan's IRP was adopted in 2010 and will be updated in 2015 along with the state-required Regional Urban Water Management Plan.

### **Implement the Local Resources Program.**

Local Resources Program and On-Site Retrofit Program Webinar—Staff hosted a webinar for member agency and sub-agency staff to provide status updates on Local Resources Program and On-Site Retrofit Program as well as discuss issues and opportunities to increase recycled water use during this drought. Staff also provided information on the 2015 IRP Update. As part of 2015 IRP update, staff is preparing an issue paper on recycled water issues and recommended actions to expand recycled water use. The main focus of the webinar was to seek member agency and sub-agency input on draft outline for the recycled water issue paper.

Under the On-site Retrofit Pilot Program, Metropolitan committed to provide about \$3.5 million for converting 3,610 acre-feet of potable water to recycled water at 89 sites, including schools, parks, golf courses, cooling towers, and one ice rink.

## **CORE: WATER SUPPLY**

Develop and execute water resource strategies that achieve the long-term reliability envisioned in the Integrated Resources Plan (IRP). Efforts include the negotiation and management of supply, storage, and water use efficiency programs, administration of imported supply contracts, development of new water resource policy recommendations in support of the IRP, collaborative planning with member agencies, and forecasting resource and facility needs.

### **Ensure cost-effective and reliable imported water supplies.**

Draft Annual Operating Plan for Colorado River Reservoirs 2016—The U.S. Bureau of Reclamation held a webinar to review the draft Annual Operating Plan for Colorado River Reservoirs 2016. Reclamation estimates the water year 2016 release from Lake Powell to be 9 million acre-feet, based on the most probable inflow scenario with the Intentionally Created Surplus condition governing the operation of Lake Mead in calendar year 2016. The upcoming August 2015 projection of the most probable Lake Powell inflow and Lake Mead's January 1, 2016 elevation will be the basis for the determination of the releases from Lake Powell and for Lake Mead operations for 2016. The June 2015 projection of Lake Mead's January 1, 2016 elevation is over six feet above the elevation at which the Secretary of the Interior would determine a shortage condition.

### **Participate and lead, where appropriate, in statewide and regional planning efforts.**

American Water Works Association Conference Moderators—Staff participated in the recent AWWA conference as moderators for sessions including: *Evaluating Water Reuse in the Context of Sustainable Water Supplies* and *New Applications of Data Management Technology for Informed Business Decisions*.

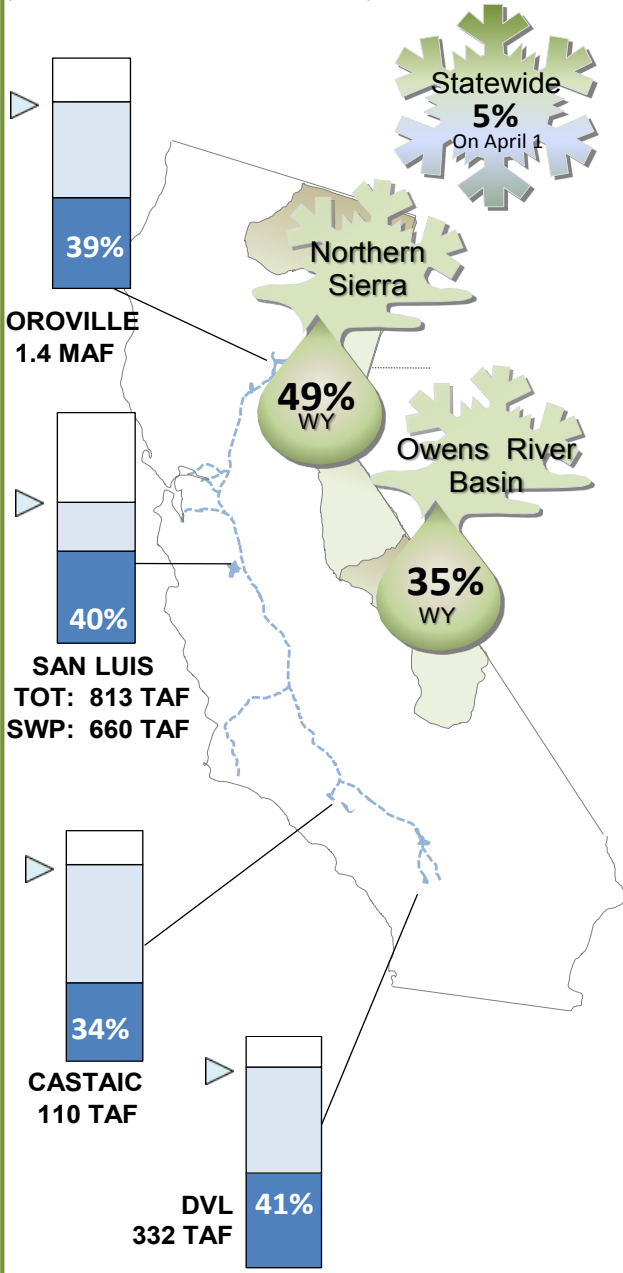
# WATER SUPPLY CONDITIONS as of June 30, 2015

## 2015 SWP Allocation

382,300 AF

20% of Table A

(Does not include CVWD & DWA Table A)

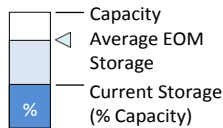
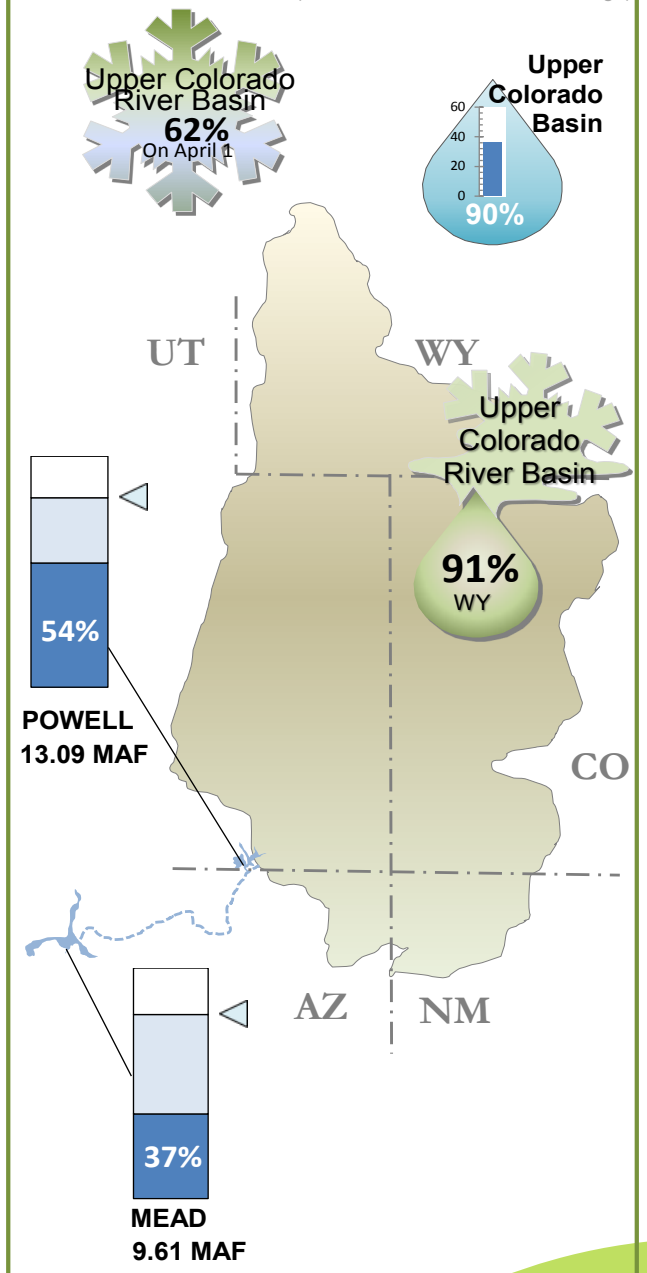


## 2015 Colorado River

925,000 AF

74% of full CRA

(Does not include Lake Mead Storage)



Runoff Forecast  
Water Year (WY) to  
Date unless otherwise

# WATER SYSTEM OPERATIONS

## CORE: PROVIDE RELIABLE WATER SUPPLIES

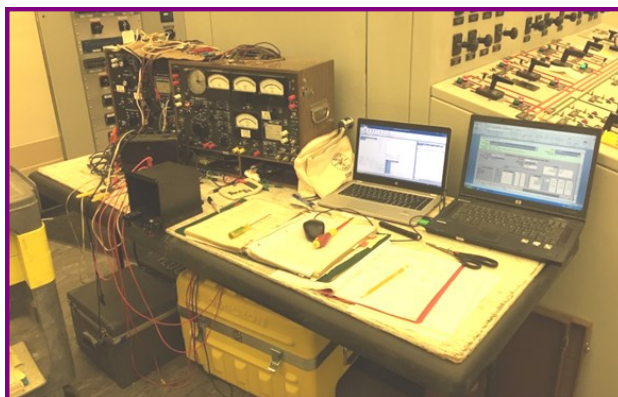
System Operations delivered approximately 162,000 acre-feet of water to meet member agency demands in June, which averaged 5,400 AF per day. This was an increase of about 600 AF per day versus May's deliveries. Treated water deliveries for June totaled 68,000 AF, or 44 percent of total deliveries for the month. In June, 103,500 AF of Colorado River water was pumped as the Colorado River Aqueduct remained on an eight-pump flow for the entire month. State Water Project imports averaged 1,550 AF per day for 46,600 AF for the month. This was a decrease of 4,400 AF from May. System Operations continued the strategy of minimizing the use of SWP water wherever possible. For the month of June, the use of SWP water accounted for 29 percent of Metropolitan's deliveries. This was a five percentage point decrease from May deliveries.

Storage at Diamond Valley Lake decreased by 34,400 AF to 327,000 AF or 40 percent full. System Operations released an average of 1,146 AF per day from DVL in June to support system-wide operations. Inland Feeder deliveries remained at zero for the month. SWP blends to the Weymouth, Diemer, and Skinner plants remained at zero percent due to the low SWP allocation of 20 percent. The Greg Avenue pump station remained online for the month of June. At the end of the month, the pumps at Greg Avenue delivered 47,500 AF of CRA water to the western side of Metropolitan's distribution system since initiation on March 19, 2014.

In June, Metropolitan's hydroelectric plants generated an average of 19.4 megawatts per hour for a total of 14,000 megawatt-hours.

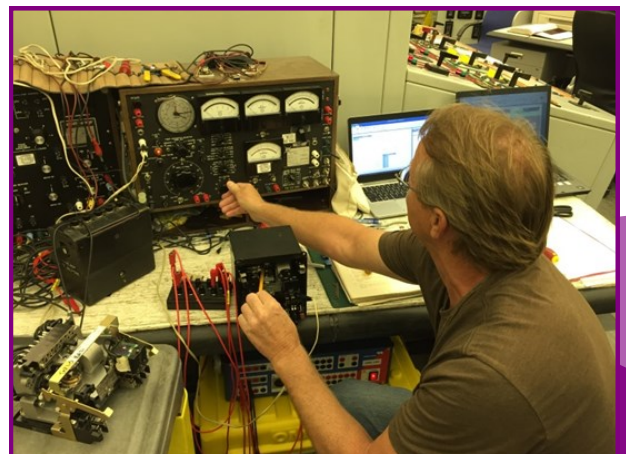
## CORE: OPTIMIZE MAINTENANCE

Colorado River Aqueduct pump motors with 9,000 horsepower are protected from electrical surges and short circuit damage by eight protective relay devices per pump. These devices are very sensitive and detect changes in electrical current and voltage that might indicate a potentially damaging problem. When a problem is detected, the devices trigger large circuit breakers to open and shut off the power within a fraction of a second. As part of regularly scheduled maintenance, staff tested the performance of the relay devices and recalibrated, as necessary. Testing was performed at specified intervals as pumps were rotated in and out of service. Technicians used sophisticated test equipment to measure the response time and operating parameters. The results were compared to the previous calibration and standards for the relay. In general, less than 20 percent of the relays required adjustment. [\(see photos below\)](#)



Relay calibration instruments and computer interface for CRA pump motors

Technician testing relay for CRA pump motors



# WATER SYSTEM OPERATIONS

## CORE: OPTIMIZE MAINTENANCE *continued...*

Staff continued the system-wide coatings program aimed at preventing corrosion and extending the life of pipelines and infrastructure. Projects completed this month included valves on the Rialto Feeder pipeline, Live Oak Reservoir, and Allen McCulloch pipeline, the fire suppression system at Lake Mathews, and the ozone contactors at the Skinner plant. [\(see photos below\)](#)

Allen McCulloch Pipeline sectionalizing valve before (left) and after (right) coating work



Reconditioning work on the last of four Perris pump motors was completed this month. The motors were removed and disassembled and internal parts were replaced as needed. Staff reinstalled each motor with predictive maintenance/condition monitoring equipment and balanced the motors to ensure efficient and reliable operation. The four pumps allow water from the Colorado River Aqueduct or Lake Perris to be pumped to the Mills plant when the state's Santa Ana Valley Pipeline is unavailable, or when there is limited State Project water available. [\(see photos below\)](#)

Staff reinstalling electric motor (left) and pump shaft and electrical connections (right) at the Perris Pumpback facility.



# WATER SYSTEM OPERATIONS

## CORE: OPTIMIZE MAINTENANCE *continued...*

Staff completed minor repairs on a corroded safety hatch on the Second Lower Feeder and a pinhole leak at Service Connection FM-1 on the Upper Feeder. The repairs were identified by staff during regular maintenance activities and were accomplished without interruption of service. Partnering with Engineering, field crews were able develop engineered repairs, and confirm the condition of the adjacent pipe and structures to ensure continued reliability. *(see photos below)*

Service Connection FM-1 venturi meter pinhole leak on the Upper Feeder



Patch plate to be welded over pinhole leak on venturi meter



Staff completed quarterly sodium hypochlorite application for quagga mussel control at Lake Mathews Outlet Tower No. 2. Using a mobile chlorinator, the tower received a 6,000 gallon treatment of 5.25 percent sodium hypochlorite solution over two weeks to augment the constant feed of 0.5 mg/L that is normally applied at the forebay of the Upper and Lower Feeders. This additional treatment prevents a buildup of quagga mussels in the outlet tower. *(see photo below)*



Staff connecting the mobile chlorinator at the Lake Mathews Outlet Tower

Staff installed a new chiller unit to upgrade the reliability of the cooling system for the Water Quality Lab. The project required that staff construct a temporary engineered platform that will be in place for the next six months while the permanent housing for the chiller unit is constructed. *(see photo below)*



The new chiller unit installed on a temporary platform for the Water Quality Laboratory

# WATER SYSTEM OPERATIONS

## CORE: OPTIMIZE MAINTENANCE *continued...*

As part of the Board-approved capital project to upgrade the Emergency Two-way Radio System, staff installed higher capacity power circuits, communications cabling, and related hardware for the radio system at 28 remote sites and the five treatment plants. The upgraded radio system will improve emergency and day-to-day communications, enhance workplace safety, and improve site security throughout Metropolitan's treatment plants and conveyance and distribution system. *(see photos below)*

Radio enclosure being lifted by helicopter (left) for installation at the head gate structure above Iron Mountain pumping plant (right – indicated by arrow). The helicopter lift was necessary due to hillside access restrictions high above Iron Mountain



Staff performed the two-year maintenance at the Temescal hydroelectric plant. Work included changing the turbine bearing oil, cleaning electrical contacts, performing alignment of high-voltage equipment in the switchyard, and testing of protection system devices. This work ensures that the equipment continues to operate reliably while also reducing the possibility of unscheduled outages or costly repairs.

The La Verne Shops manufactured 15 pilot valve assemblies. These pilot valves are used at various pressure control structures. They work in conjunction with the larger pressure control valves to regulate the hydraulic grade line and prevent over pressurization of pipelines. These new valve assemblies will be installed in various pressure control structures and will replace old pilot valves which no longer function properly. *(see photos right)*



An old pilot valve assembly (left) as installed inside a superstructure and (right) a reverse engineered new pilot valve assembly manufactured in the La Verne Shops

# WATER SYSTEM OPERATIONS

## CORE: OPTIMIZE MAINTENANCE *continued...*

The La Verne Shops manufactured a stilling well platform, gate, and ladder for the Department of Water Resources' San Luis Field Division. A stilling well dampens waves or surges while permitting the water level in the pipeline or conduit to be measured. This platform will be used to inspect the water levels in the stilling well. The platform manufactured at La Verne is a replacement for an existing platform that became unsafe to use due to degradation from corrosion. (*see photos below*)

A computer-aided design model of the platform assembly installed around a stilling well (left) and (right) a newly manufactured stilling well platform assembly in the La Verne Shops.



## CORE: MANAGE THE POWER SYSTEM

During the month of June, staff met with other Hoover power contractors to discuss what provisions would be desirable in the new federal Hoover contracts that will become effective on October 1, 2017. The contracts are being drafted by the Western Area Power Administration and comments are being solicited. The contractors met with Western and the Bureau of Reclamation on June 19 to present the contractors' recommendations. The new federal contracts are expected to be drafted by early 2016.

Staff met with Southern California Edison on provisions for a new contract that will replace the existing Colorado River Aqueduct Service and Interchange Agreement. The Agreement provides for the operation and integration of Metropolitan and Edison power assets on and near the Colorado River Aqueduct, including power from Hoover Dam. The current contract expires on September 30, 2017.

## CORE: PROTECT SOURCE WATER QUALITY

On June 9, the California Department of Water Resources treated Castaic Lake with three tons of copper sulfate to address an algal bloom of dolichospermum that produced high levels of geosmin – a taste and odor compound. While geosmin levels exceeded 100 ng/L at the surface, levels at the intake located 35 meters below the surface were approximately 2 ng/L. Following treatment, geosmin concentrations at the surface decreased to 2 ng/L. No taste and odor complaints were received during this episode.



# WATER SYSTEM OPERATIONS

## CORE: IMPROVE SECURITY AND EMERGENCY RESPONSE

On May 27, Metropolitan and some of its member agencies participated in a cyber-security emergency exercise. Representatives from Three Valleys, Foothill, and Upper San Gabriel Valley Municipal Water Districts and water suppliers from the Cities of Pasadena and San Marino participated in the exercise. The half-day tabletop exercise, *Under the Radar*, was held at the Three Valleys' offices and gave participants the opportunity to assess numerous, seemingly unconnected operational issues to identify how they could be produced by a common cyber-security attack. Metropolitan staff presented information about the importance of cyber-security for utilities. The participating agencies and staff from the Los Angeles County Office of Emergency Management and the Pasadena Fire Department collaborated with Metropolitan to design and implement this exercise.

California Institute of Technology faculty visited Metropolitan's Emergency Operations Center (EOC) this month to learn more about water systems in Southern California and how Metropolitan plans for emergencies. Metropolitan works closely with CalTech's seismology experts to better prepare for and respond to earthquakes. Staff from the Los Angeles County Office of Emergency Management also visited Metropolitan's EOC this month to learn how the County and Metropolitan can work together during a major emergency. This type of pre-event coordination is an important part of any successful emergency response.

## CORE: PROVIDE TECHNICAL SUPPORT TO MEMBER AGENCIES

Metropolitan held a Member Agency Water Quality Managers Meeting on June 11. Topics included: recent legislation, a regulatory and security update presented by a guest speaker from the American Water Works Association, Metropolitan's Innovation and Technology Program, Division of Drinking Water Transition Advisory Group, and water supply and water quality updates.

## CORE: ENSURE WATER QUALITY COMPLIANCE, WORKER SAFETY AND ENVIRONMENTAL PROTECTION

On June 17, the U.S. Environmental Protection Agency finalized the May 2015 draft public health advisories for the algal toxins microcystin and cylindrospermopsin. Public Health Advisories are non-enforceable drinking water standards that provide information on contaminants that can cause human health effects and are known or anticipated to occur in drinking water. USEPA has also published a cyanotoxin management document as a companion to the health advisories, titled *Recommendations for Public Water Systems to Manage Cyanotoxins in Drinking Water*, which provides recommendation to water utilities on monitoring, treatment, and several other issues. Metropolitan staff continues to track and participate with American Water Works Association to address regional and national concerns. Staff will also work with the Division of Drinking Water of the State Water Resources Control Board to evaluate communication strategies with the public concerning this issue.

Staff acknowledged the National Safety Council's designation of June as National Safety Month. The theme *What Do You Live For?* recognizes that safe behaviors allow us to live for what matters to us. Staff conducted safety toolboxes *Protect Yourself* through personal protective equipment (PPE) in order to review the basic PPE requirements for various types of work, including the proper selection, inspection, use, and maintenance of PPE.

Metropolitan complied with all water quality regulations and primary drinking water standards during the month of June 2015.

# WATER SYSTEM OPERATIONS

## CORE: DEVELOP WORKFORCE

The Water System Operations Apprentice and Technical Training Programs help develop and train personnel to become qualified electricians and mechanics responsible for maintaining Metropolitan's water treatment and distribution systems. The Class of 2015 Electricians and Mechanics completed Demonstrated Proficiency Assessments for their respective crafts. The assessments consisted of hands-on exercises designed to test skills in the electrical and mechanical maintenance fields. Successful completion of these assessments, eight periods of related instruction, and 7,280 hours of on-the-job training, qualify apprentices to become journey-level employees. The assessments were proctored by managers and journeymen from WSO's mechanical and electrical teams. *(see photo below)*

Electrical and Mechanical Apprentices from the Class of 2015 were acknowledged during a completion ceremony on June 17, 2015. *(see photo below)*

Staff visited local Southern California college campuses to encourage engineering students to apply for the year-long student intern positions within Water System Operations. The intern positions provide an opportunity for students to work side-by-side with engineers, technicians, and skilled-craft personnel as they operate and maintain Metropolitan's facilities. These outreach efforts are part of WSO's initiatives to develop the workforce.



Mechanical apprentice performing final assessment



Class of 2015 apprentices at the completion ceremony on June 17, 2015

## CORE: PREPARE FOR FUTURE LEGISLATION AND REGULATION

On June 9, U.S. Environmental Protection Agency and Occupational Safety and Health Administration issued an "Alert" on Use of Inherently Safer Technology for such chemicals as chlorine. The Alert is a guidance document for the consideration and evaluation of chemical hazards and potential alternatives. The Alert is non-binding, but may be included in upcoming changes to the Risk Management Plan (RMP) regulations. EPA announced that it intends to issue an Advanced Notice of Proposed Rulemaking for the RMP regulations in September 2015. USEPA's overhaul of the Risk Management Plan regulation is part of a broad federal plan to implement President Obama's Executive Order 13650 on improving the safety and security of chemical facilities. Staff continues to monitor proposed changes to both the RMP and Process Safety Management regulations, and to work with American Water Works Association, the Chlorine Institute, and others to provide input.

# WATER SYSTEM OPERATIONS

## CORE: OPTIMIZE WATER TREATMENT AND DISTRIBUTION

State Water Project target blends at the Weymouth, Diemer, and Skinner plants remained at zero percent for May. Flow-weighted running annual averages for total dissolved solids May 2014 through April 2015 were 618, 619, and 547 mg/L for Weymouth, Diemer and Skinner plants, respectively.

On June 8, Metropolitan received six Partnership for Safe Water awards. The awards included the prestigious President's Award for Treatment Plant Optimization for Weymouth, the Distribution System Optimization Award, and 15-year Director's Awards for the Diemer, Jensen, Mills, and Weymouth plants. The Partnership is a drinking water optimization program sponsored by the American Water Works Association, the U.S. Environmental Protection Agency and other water organizations, to recognize water suppliers that continuously provide drinking water quality that surpasses regulatory requirements through treatment plant and distribution system optimization. *(see photo right)*



Metropolitan staff acceptance of the President's Award for Treatment Plant Optimization for the Weymouth plant

Staff recently completed a major rehabilitation of all four modules of the Weymouth Washwater Reclamation Plant. This facility processes filter backwash water and sludge collected from the sedimentation basins. The work was performed over the last year, one module at a time, in order to have minimal impact on treatment plant capacity and performance.

## CORE: SUPPORT EDUCATION AND OUTREACH INITIATIVES

Staff assisted on four, three-day tours of the Colorado River Aqueduct during the month of June. Tour participants (40 per tour) visited key infrastructure sites and received information relating to agricultural water use, water conveyance and storage, power production, and coordination of resources related to the Colorado River users.

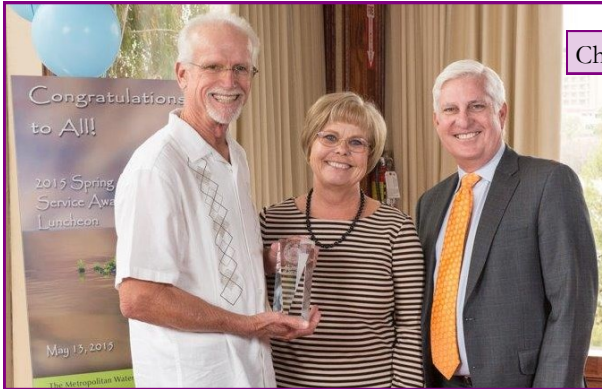
Staff also conducted nine plant tours during the month of June at the Diemer, Jensen, Skinner, and Weymouth plants. Tour participants included Board members, member agencies, local government officials, and non-profit organization members and they learned about water treatment processes, source water protection, and drought response initiatives. Notably, from June 7-10, staff welcomed members of the American Water Works Association for tours of the Diemer and Weymouth plants. AWWA, together with the California/Nevada Section AWWA, held its 134th Annual Conference in Anaheim this month, bringing together the largest gathering of water professionals in the world. *(see photo right)*



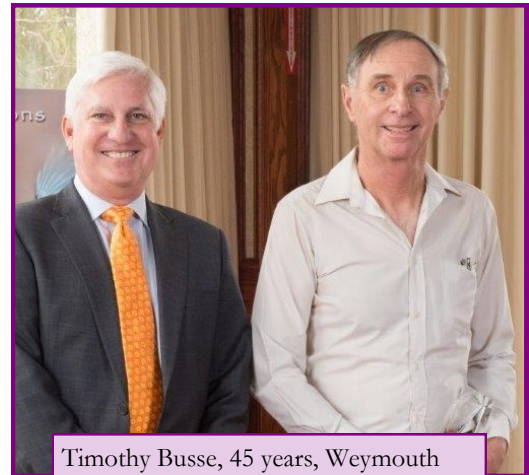
Members of the AWWA during a treatment plant tour

# Metropolitan Workforce

Belated information—On May 13, Metropolitan’s Service Awards Luncheon honored employees with 20 or more years of service. Pictured below are a couple of employees with 45 years of service with General Manager Kightlinger.



Charles Hooper, 45 years, Soto Street facility



Timothy Busse, 45 years, Weymouth facility



WSO Management Academy class on June 17 at Jensen plant

Storage	As of 6/30/15	% of Capacity
DVL	331, 843 AF	41
Lake Mathews	116,982 AF	64
Lake Skinner	30,244 AF	69

### Useful information:

**AF** = acre-foot, the volume of water to cover an acre of land, one-foot deep.

Approximately 326,000 gallons of water, serves annual needs of two typical California families.

**TAF**=thousand acre-feet

**MAF**=million acre-feet

**Metropolitan's Mission** is to provide its service area with adequate and reliable supplies of high-quality water to meet present and future needs in an environmentally and economically responsible way.

General Manager: Jeffrey Kightlinger  
 Office of the GM No.: 213 217-6139  
 Email: [OfficeoftheGeneralManager@mwdh2o.com](mailto:OfficeoftheGeneralManager@mwdh2o.com)

700 No. Alameda Street,  
 Los Angeles, CA 90012  
 General No.: 213 217-6000

[www.MWDH2O.com](http://www.MWDH2O.com)

[www.BEWATERWISE.com](http://www.BEWATERWISE.com)