

Water Planning and Stewardship Committee

Item 8b

Subject: Colorado River Management Report

Purpose: Inform Board and member agencies of the Colorado River Basin Status

Water Planning and Stewardship Committee

Item 8b

Summary

Colorado River Management Report



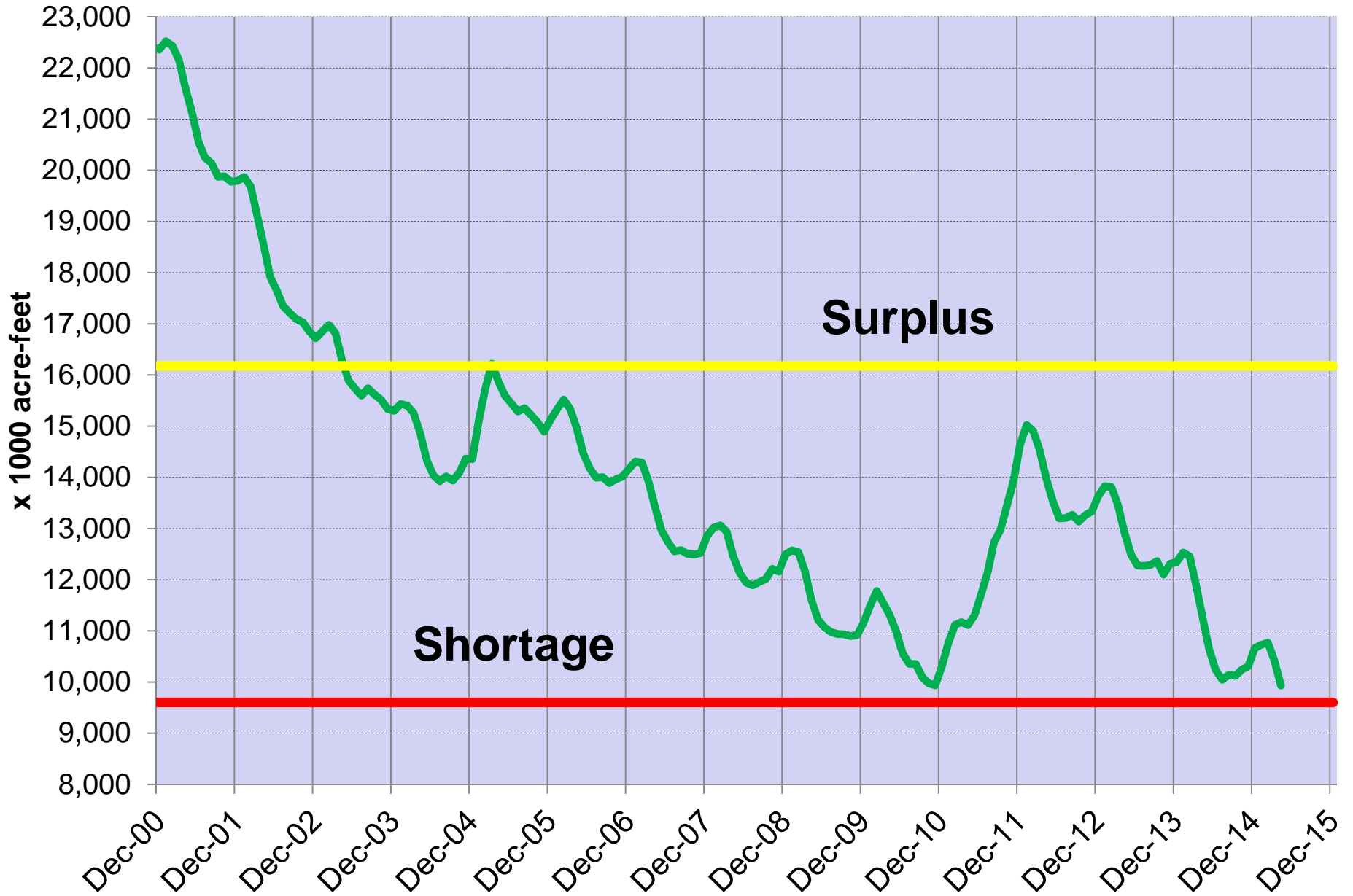
Colorado River Management Report

Water Planning and Stewardship Committee
Item 8b
May 11, 2015

Colorado River Basin

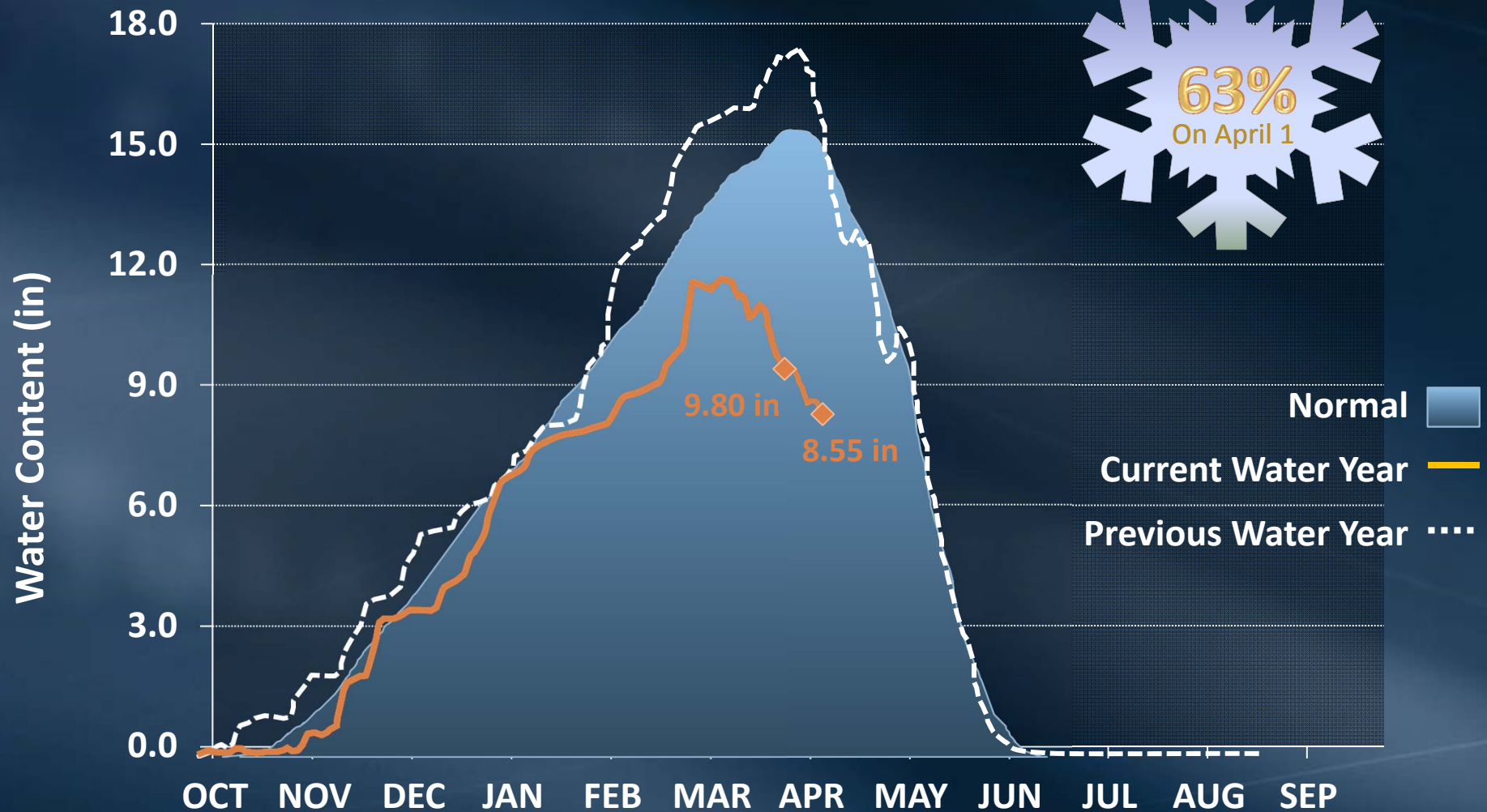


Lake Mead Storage 2000 – 2015



Colorado River Hydrologic Conditions

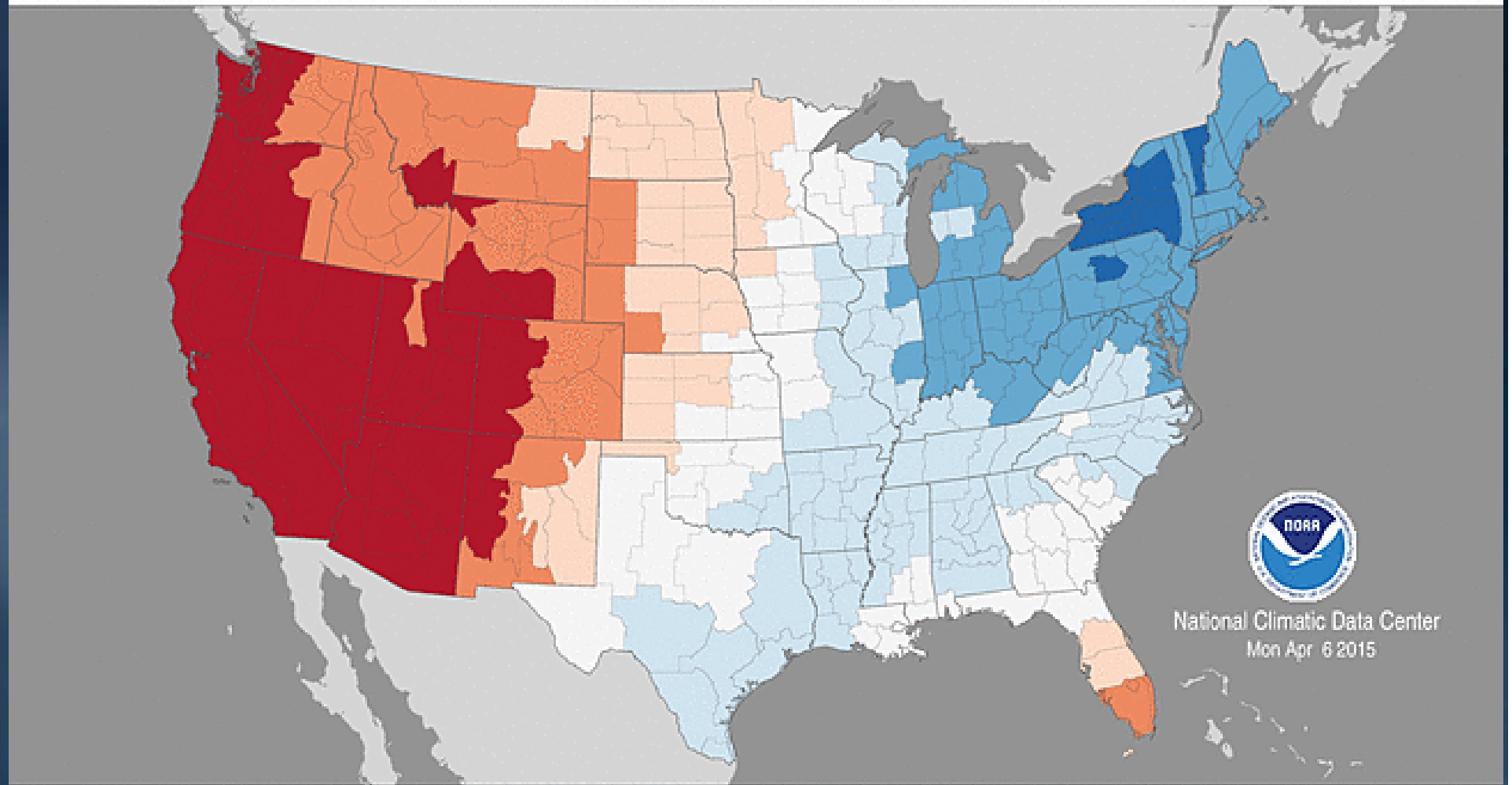
Upper Colorado Basin Snowpack



Divisional Average Temperature Ranks

January–March 2015

Period: 1895–2015



Record Coldest

Much Below Average

Below Average

Near Average

Above Average

Much Above Average

Record Warmest

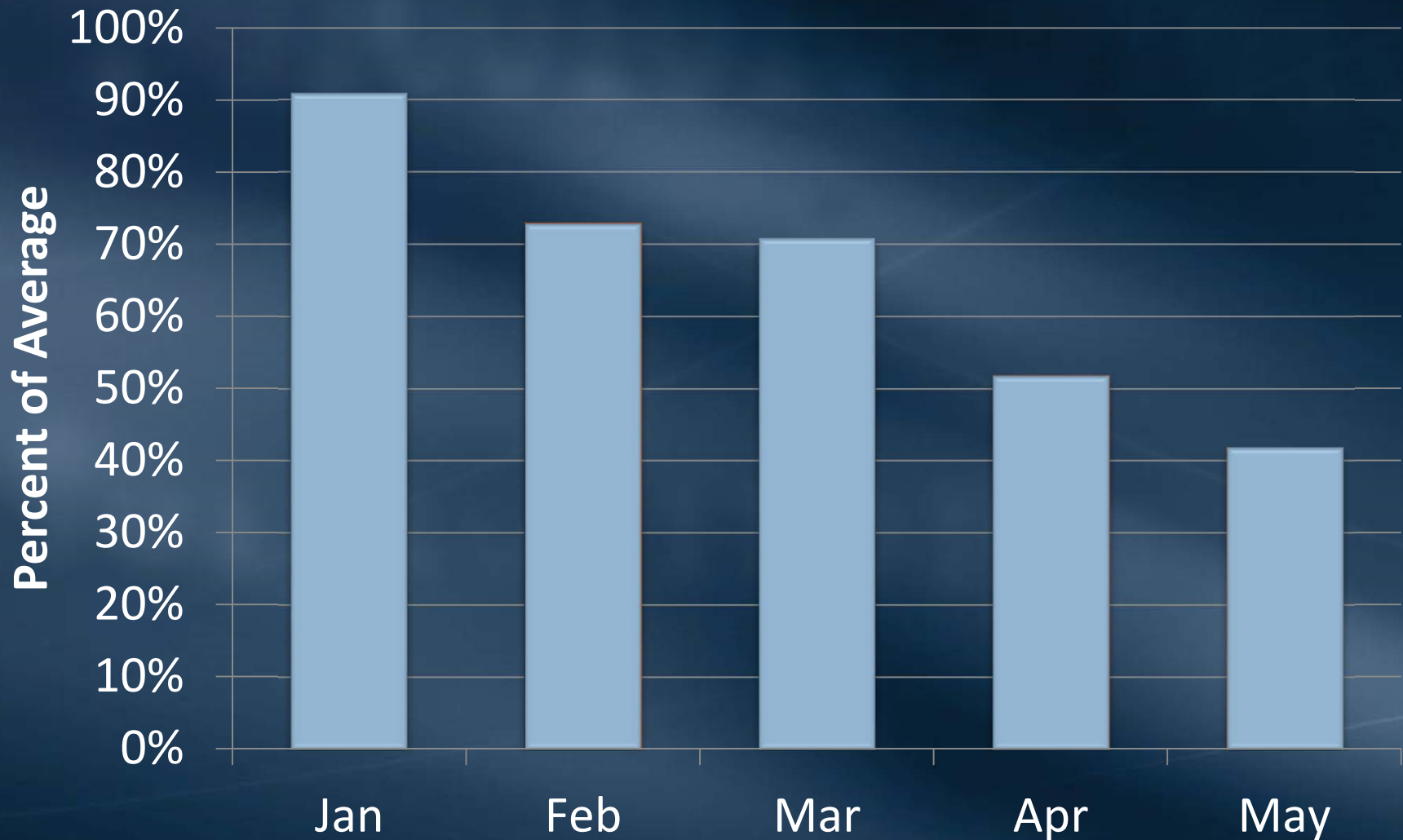
Normal Winter Keeps ET Low



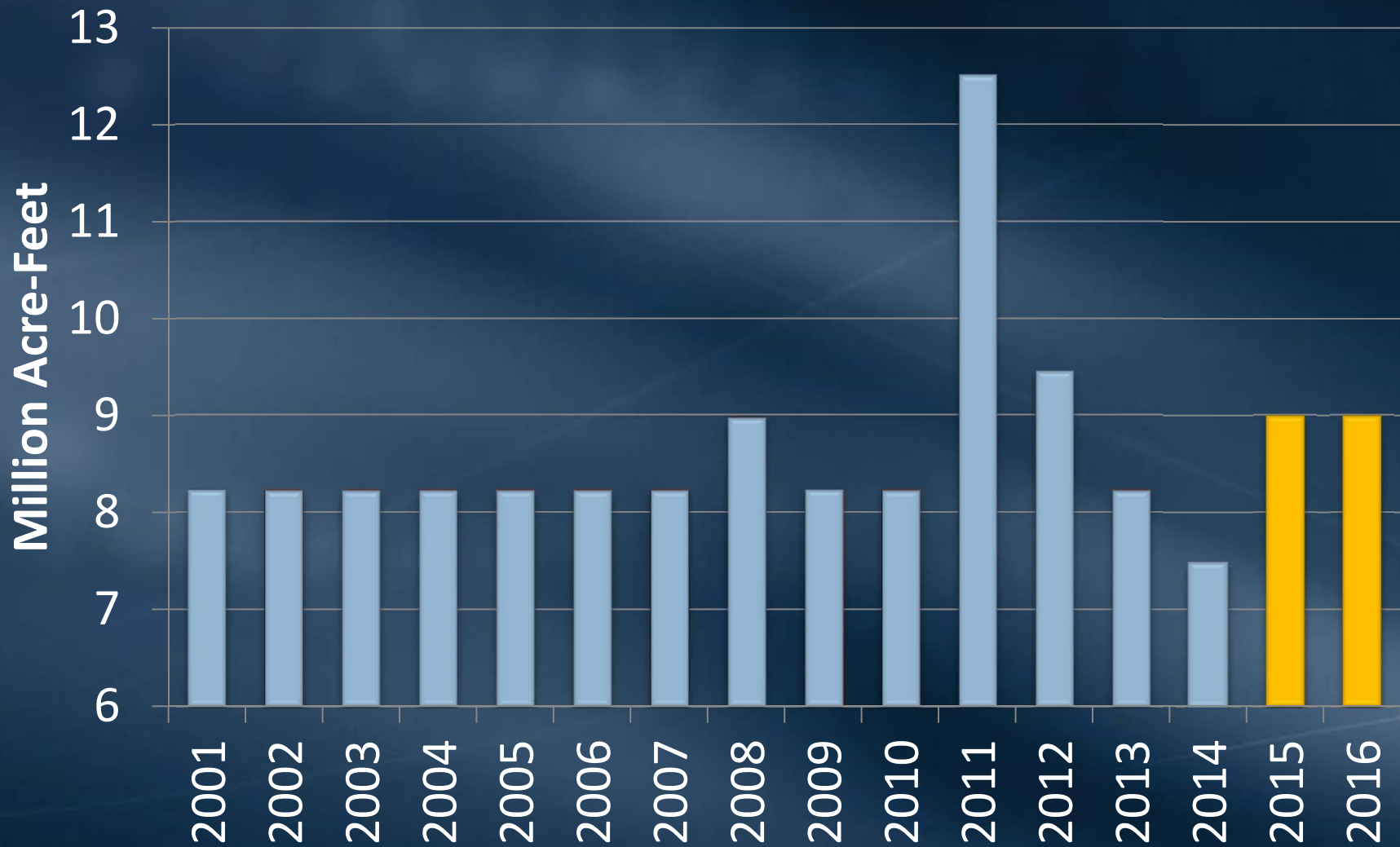
Native Plants Use Water When Snow Melts



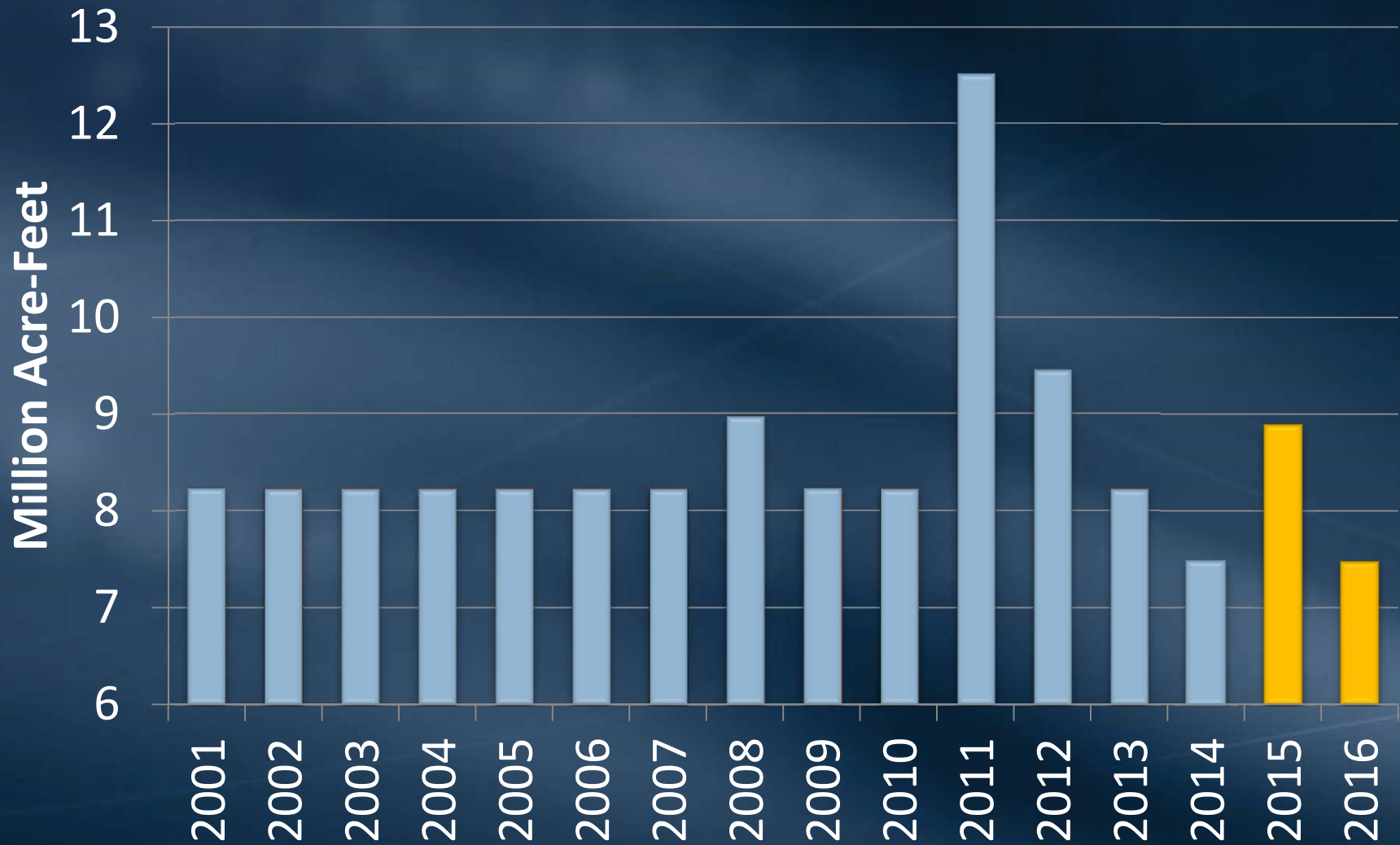
Lake Powell 2015 April-July Runoff Monthly Forecasts



Lake Powell Historical Releases to with average precipitation

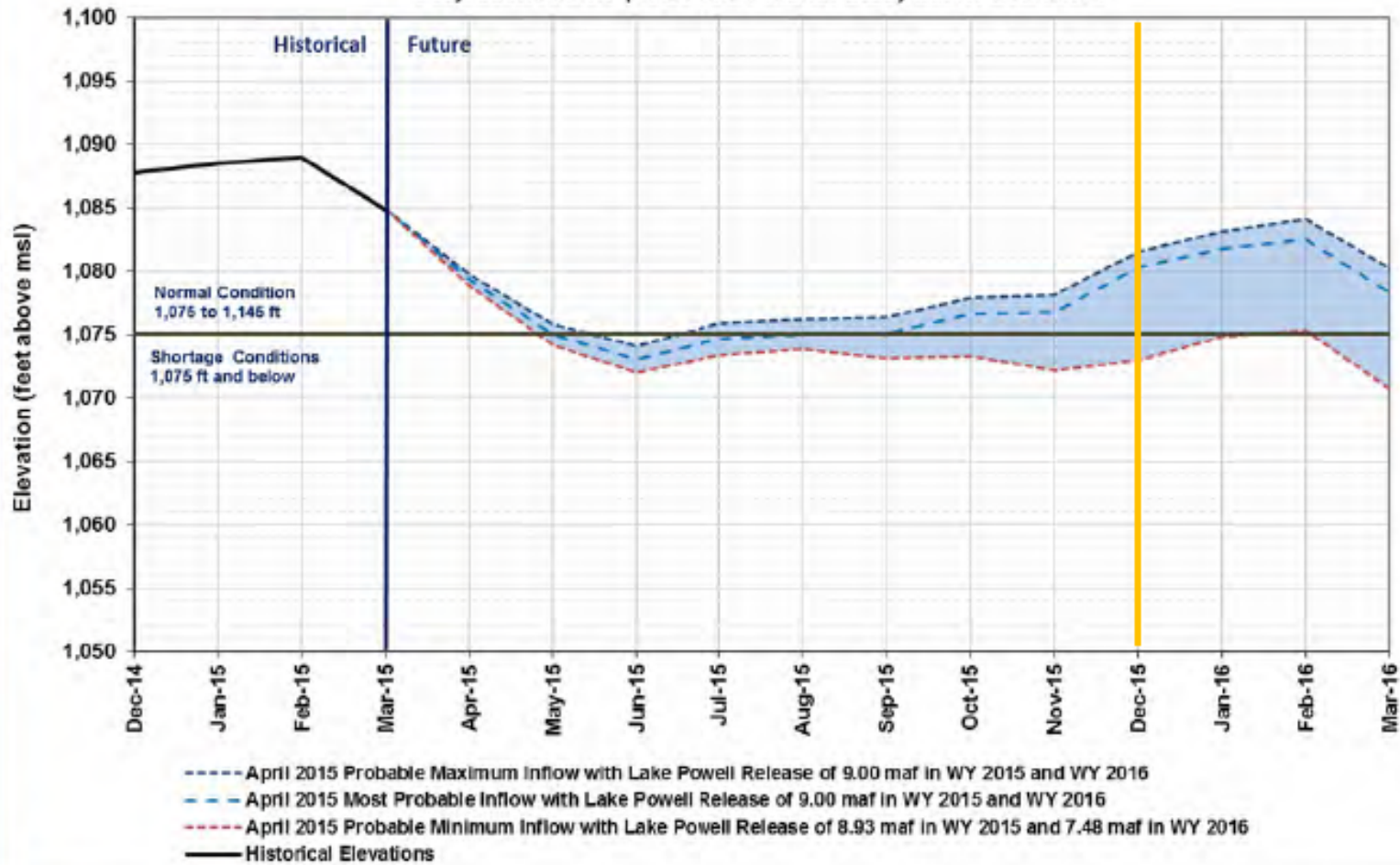


Lake Powell WY Releases with dry conditions



Lake Mead End of Month Elevations (Detail)

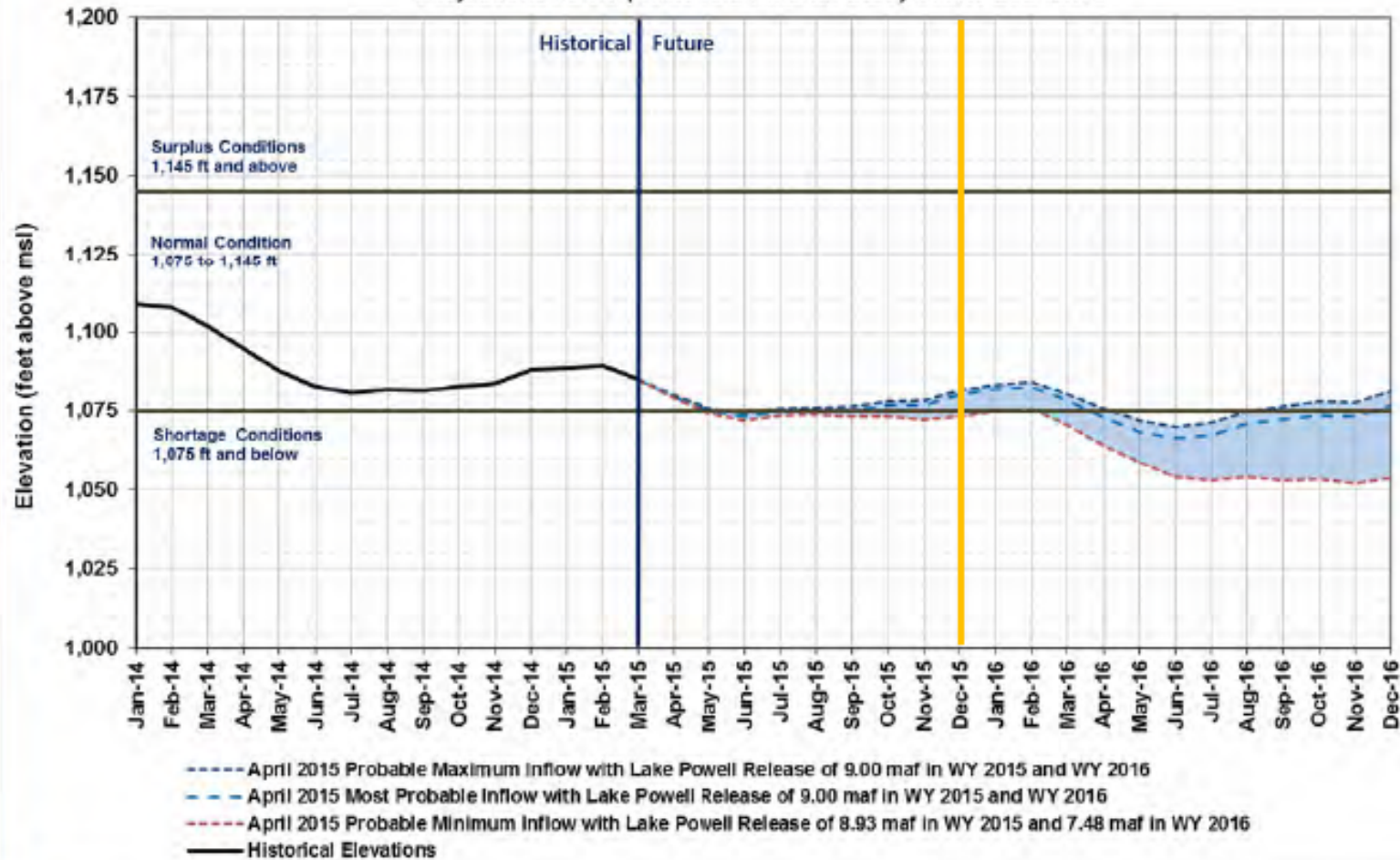
Projections from April 2015 24-Month Study Inflow Scenarios



RECLAMATION

Lake Mead End of Month Elevations

Projections from April 2015 24-Month Study Inflow Scenarios



RECLAMATION

Lake Mead Storage Actual and Projected, 2000 – 2015

