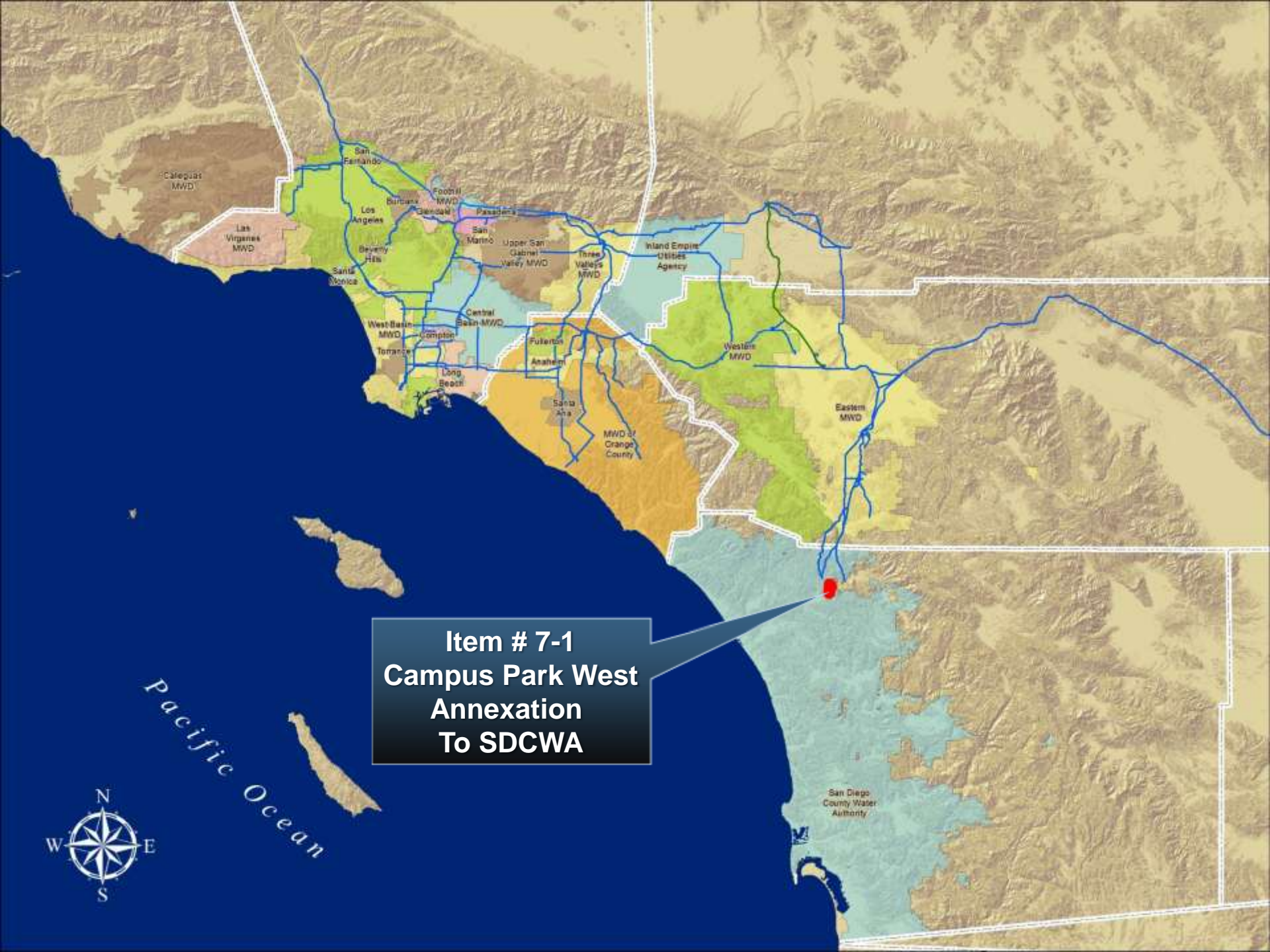




Adopt Final Resolution for Annexation of Campus Park West Annexation to SDCWA and MWD

Finance & Insurance Committee
Item 7-1
December 8, 2014



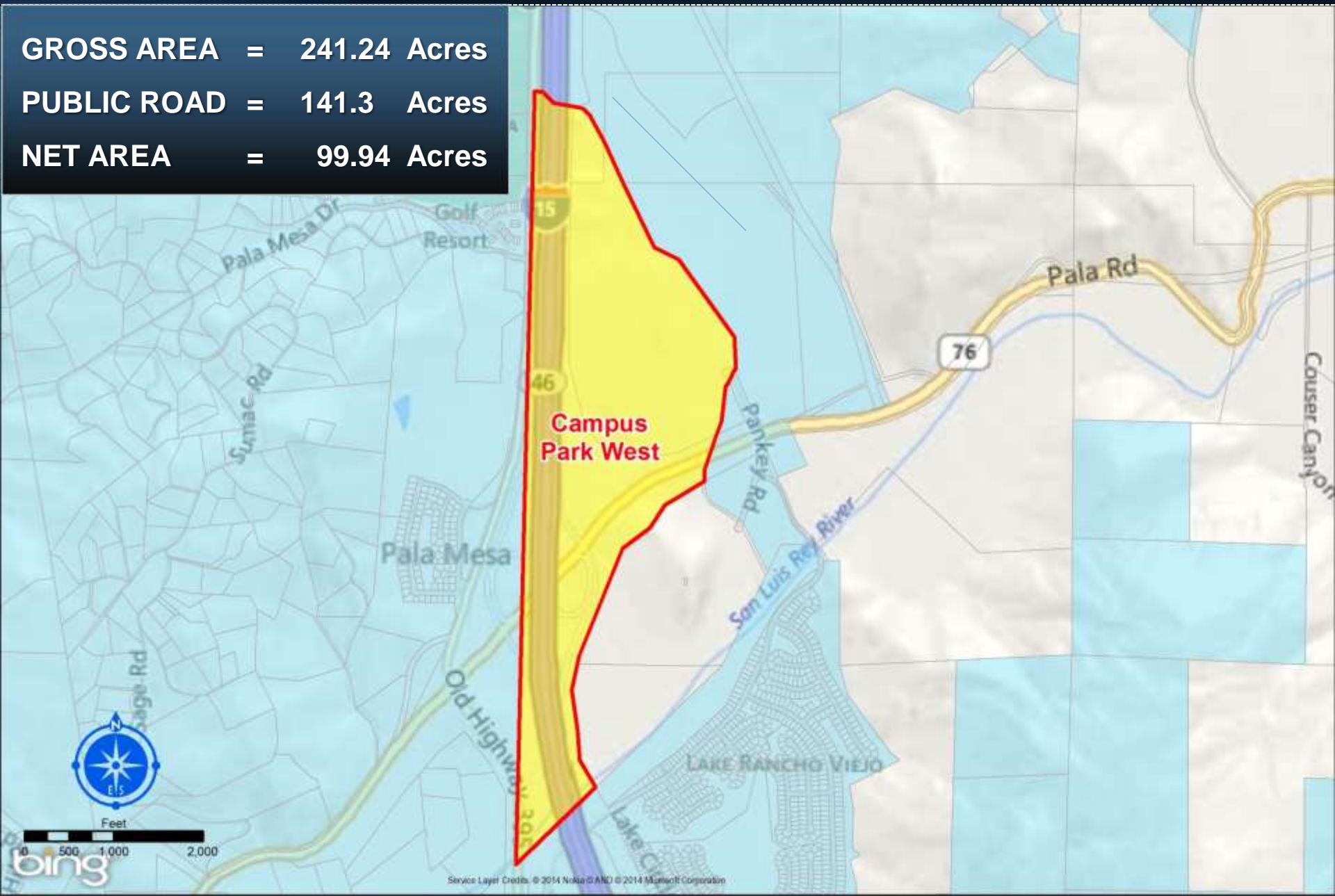
**Item # 7-1
Campus Park West
Annexation
To SDCWA**



Pacific Ocean

San Diego
County Water
Authority

GROSS AREA = 241.24 Acres
PUBLIC ROAD = 141.3 Acres
NET AREA = 99.94 Acres



Summary

| Annexation | Proposed Land Use | Acres | Annexation Charge | Increased Demand Upon Metropolitan (acre-feet/yr) |
|--------------------------|--------------------------------|---------------|--------------------------|--|
| Campus Park West | Residential Development | 99.94 | \$ 449,530.12 | 270 AFY |
| Cal-Trans | Freeway | 141.3 | \$ 0 | 0 AFY |
| Processing Charge | | | \$ 5,000 | |
| TOTAL | | 241.24 | \$ 454,530.12 | 270 AFY |

Board Options

- Option 1:

- Adopt CEQA determination

- a) Adopt annexation resolution for Campus Park West Annexation to SDCWA and Metropolitan

- b) Approve the Statement of Compliance with the current Water Use Efficiency Guidelines

- Option 2:

- Decline the Request

Staff Recommendation

- Option 1

