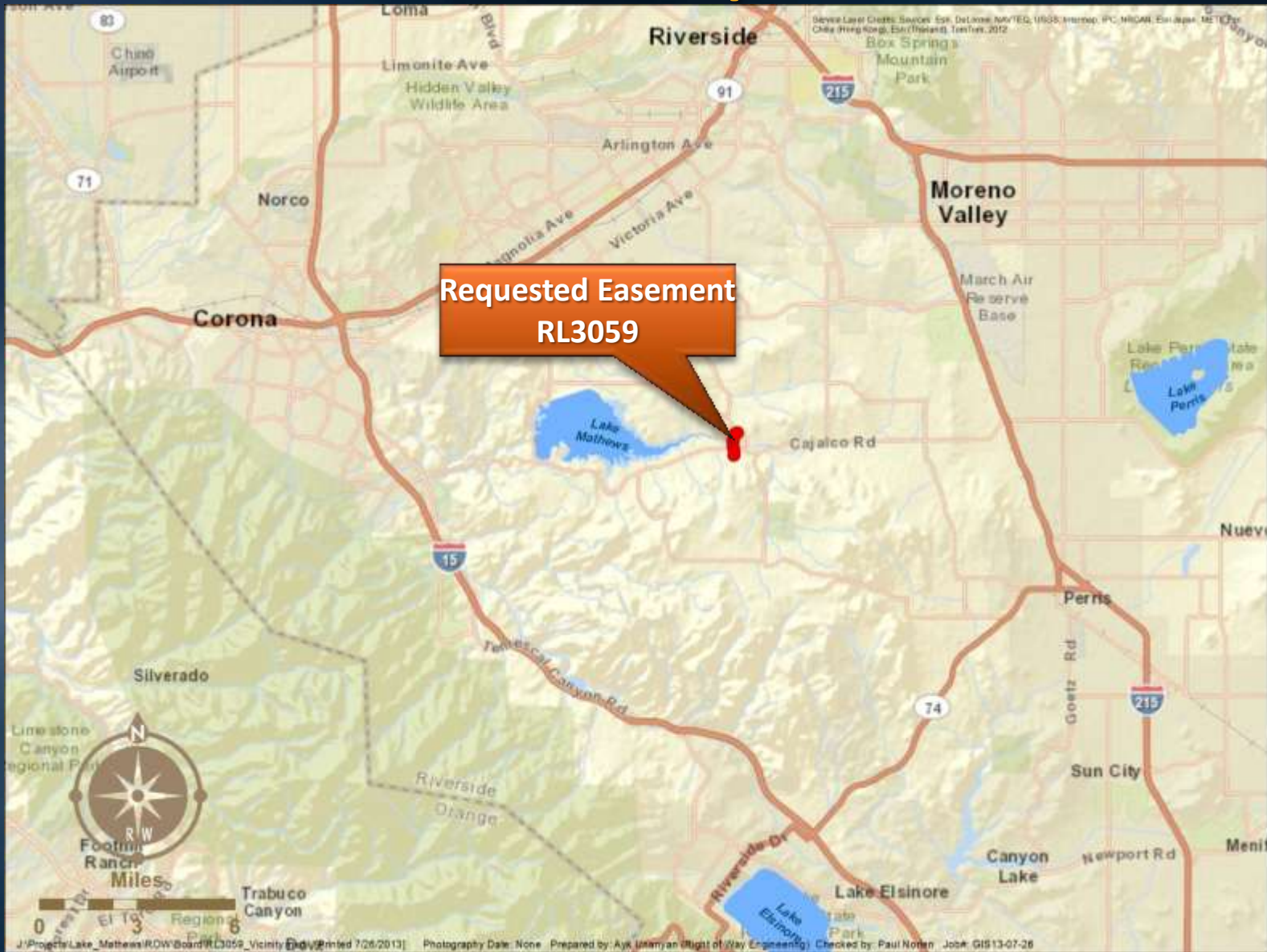




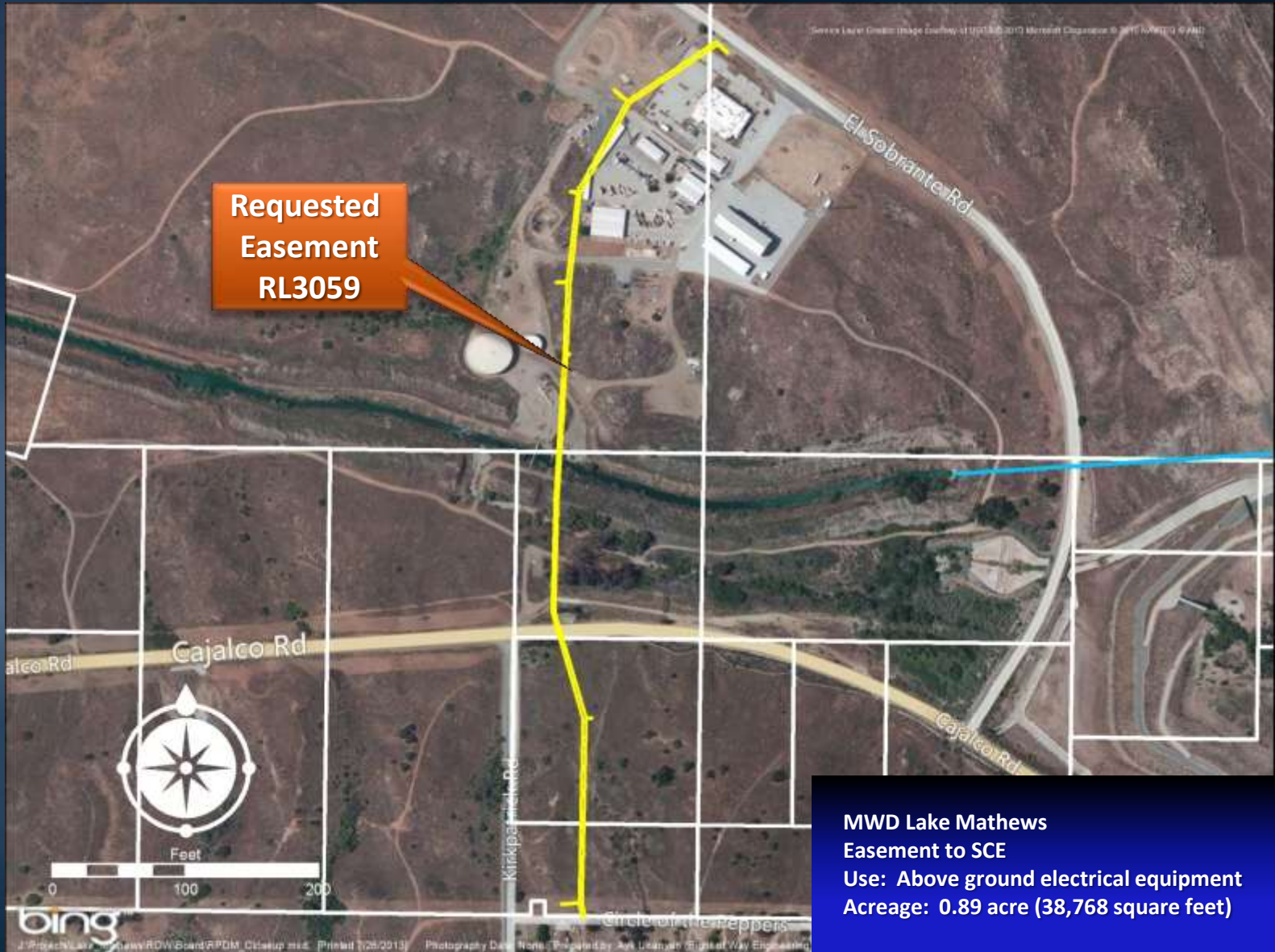
Authorize One Easement on Metropolitan Property

Real Property & Asset Management Committee
Item 7-6
October 8, 2013

General Location Map



Site Map – Southern California Edison



Proposed Easement – SCE

- Install and maintain above-ground electrical and communications equipment needed by adjacent Western Municipal Water District's Operations Center and nearby development
- Total of approximately 0.89 acre (38,768 square feet)
- Compensation - Fair market value of \$3,300 plus \$1,500 processing fee
- Language is protective of Metropolitan's paramount right to use property to conduct its core business

Board Options

● Option #1

- Adopt CEQA determination that the proposed action is categorically exempt
- Authorize granting one permanent easement to Southern California Edison

● Option #2

- Do not approve the easement

Staff Recommendation

- Option #1

