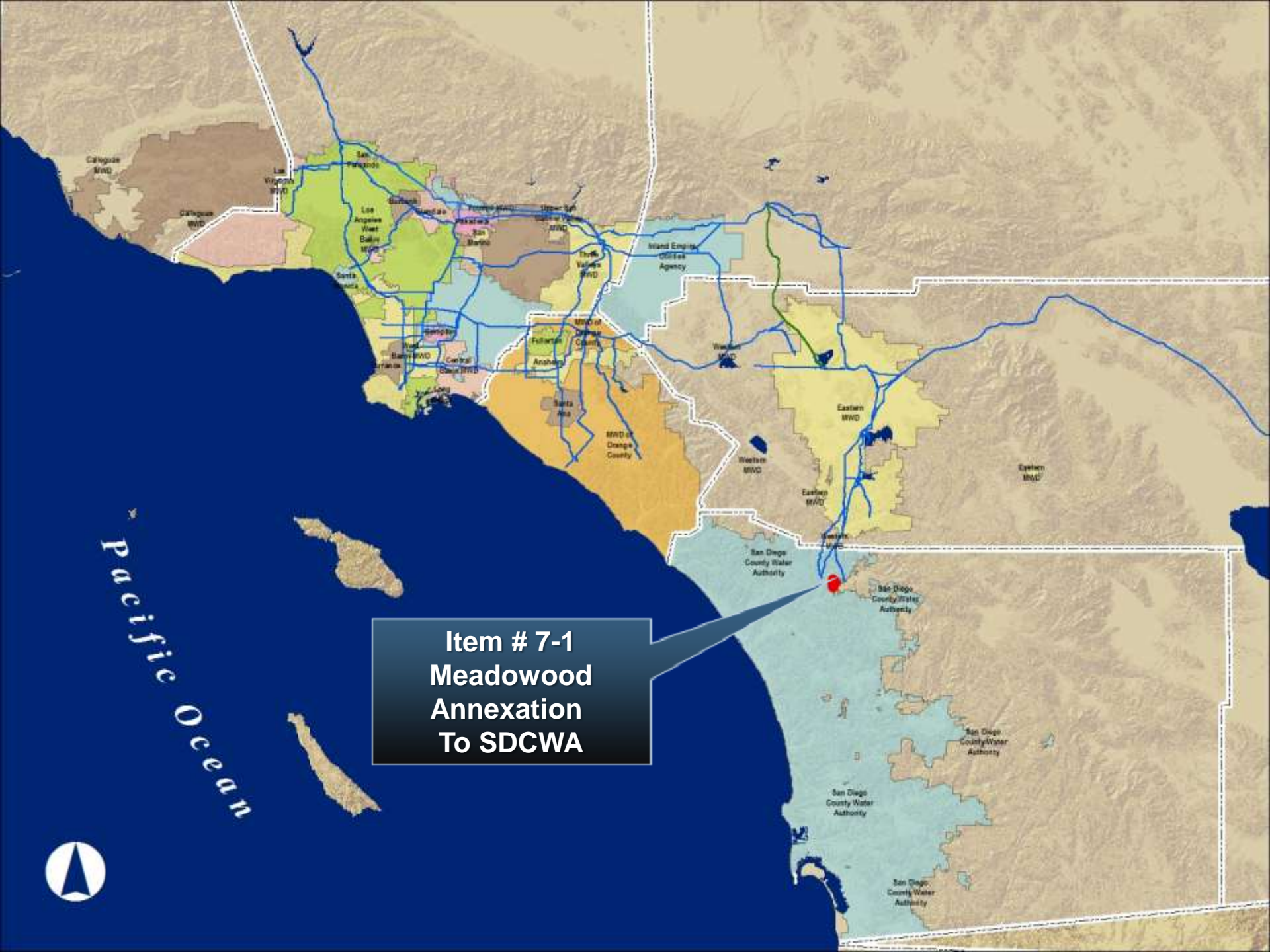




Adopt Final Resolutions for Annexation and Impose Water Standby Charges for Meadowood Annexation to SDCWA

Finance & Insurance Committee
Item 7-1
September 9, 2013

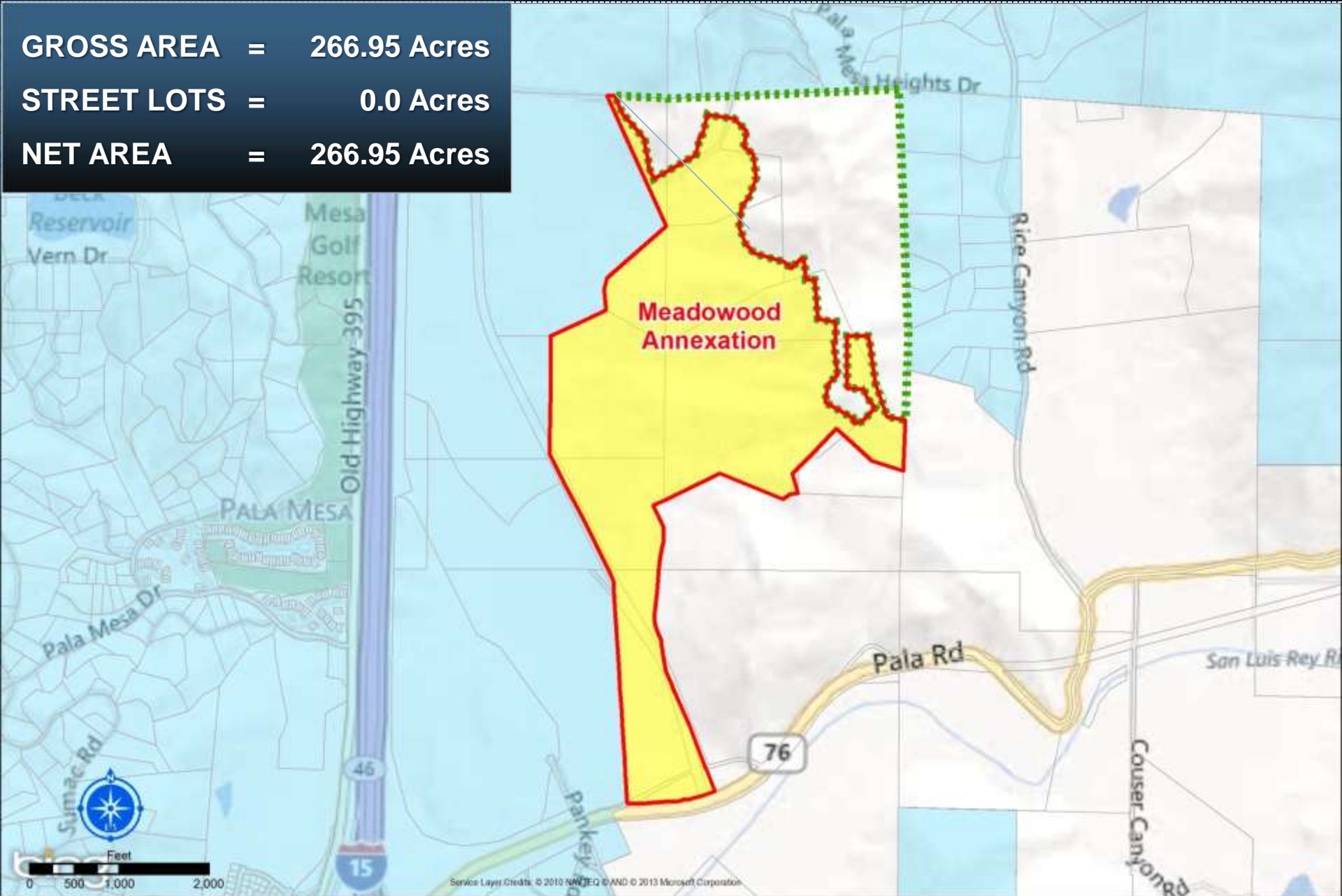


**Item # 7-1
Meadowood
Annexation
To SDCWA**

GROSS AREA = 266.95 Acres

STREET LOTS = 0.0 Acres

NET AREA = 266.95 Acres



Summary

Annexation	Proposed Land Use	Acres	Annexation Charge	Increased Demand Upon Metropolitan (acre-feet/yr)
Meadowood	Residential Development	266.95	\$ 1,167,420	329.2 AFY
Processing Charge			\$ 5,000	
TOTAL		266.95	\$ 1,172,420	329.2 AFY

Board Options

- Option 1:
 - Adopt CEQA determination
 - a) Adopt annexation resolution for Meadowood Annexation to SDCWA and Metropolitan
 - b) Adopt resolution to impose water standby charge
- Option 2:
 - Decline the Request

Staff Recommendation

- Option 1



