



Long-Term Rehabilitation of PCCP on the Second Lower Feeder

Engineering & Operations Committee

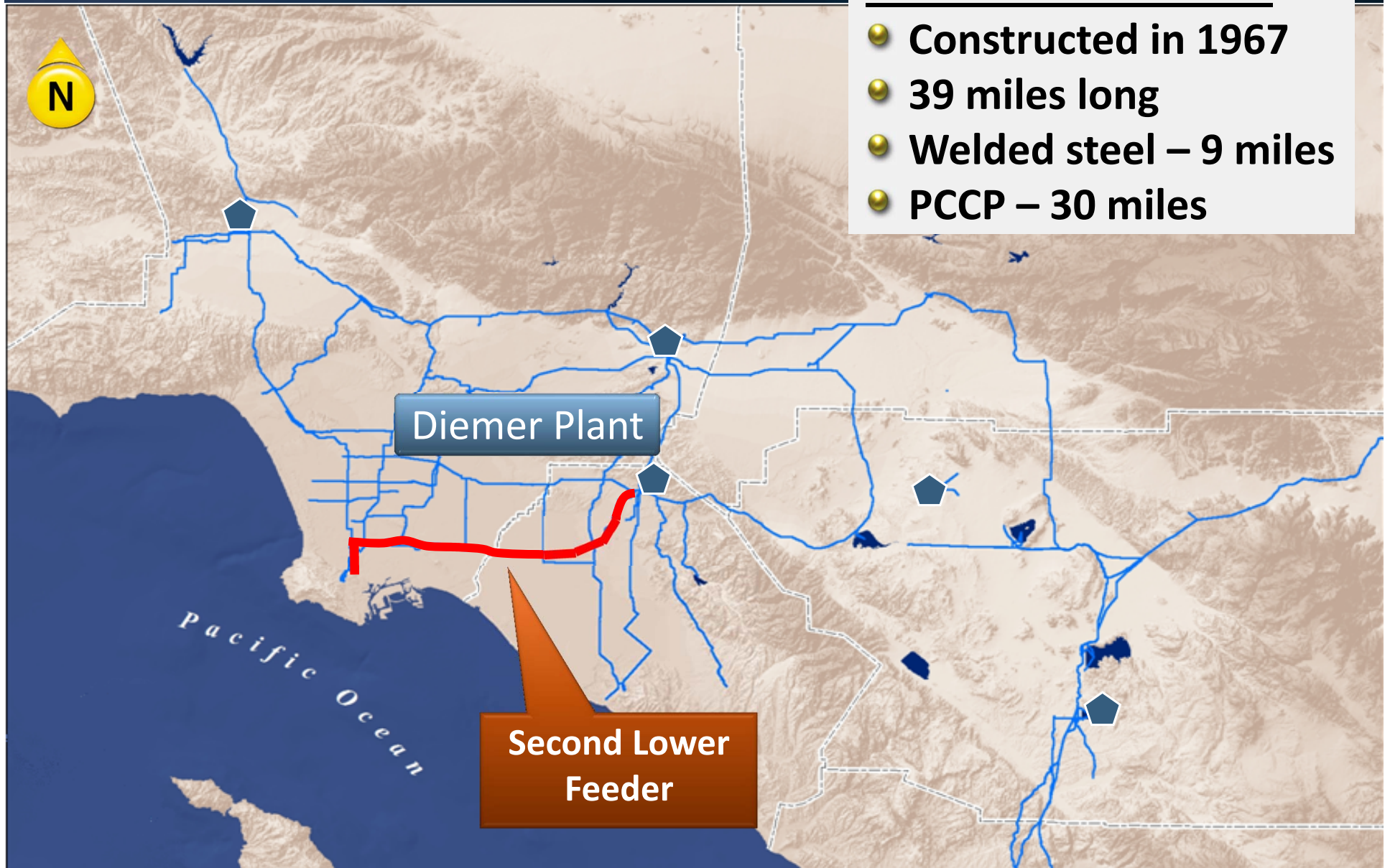
Item 8-1

September 9, 2013

Current Action

- Appropriate \$5.1 M
- Authorize preliminary design to line PCCP portions of Second Lower Feeder
- Authorize 3 agreements
 - Black & Veatch for preliminary design
 - ICF International for envir. documentation
 - DHI, Inc. for a system-wide hydraulic model

Distribution System

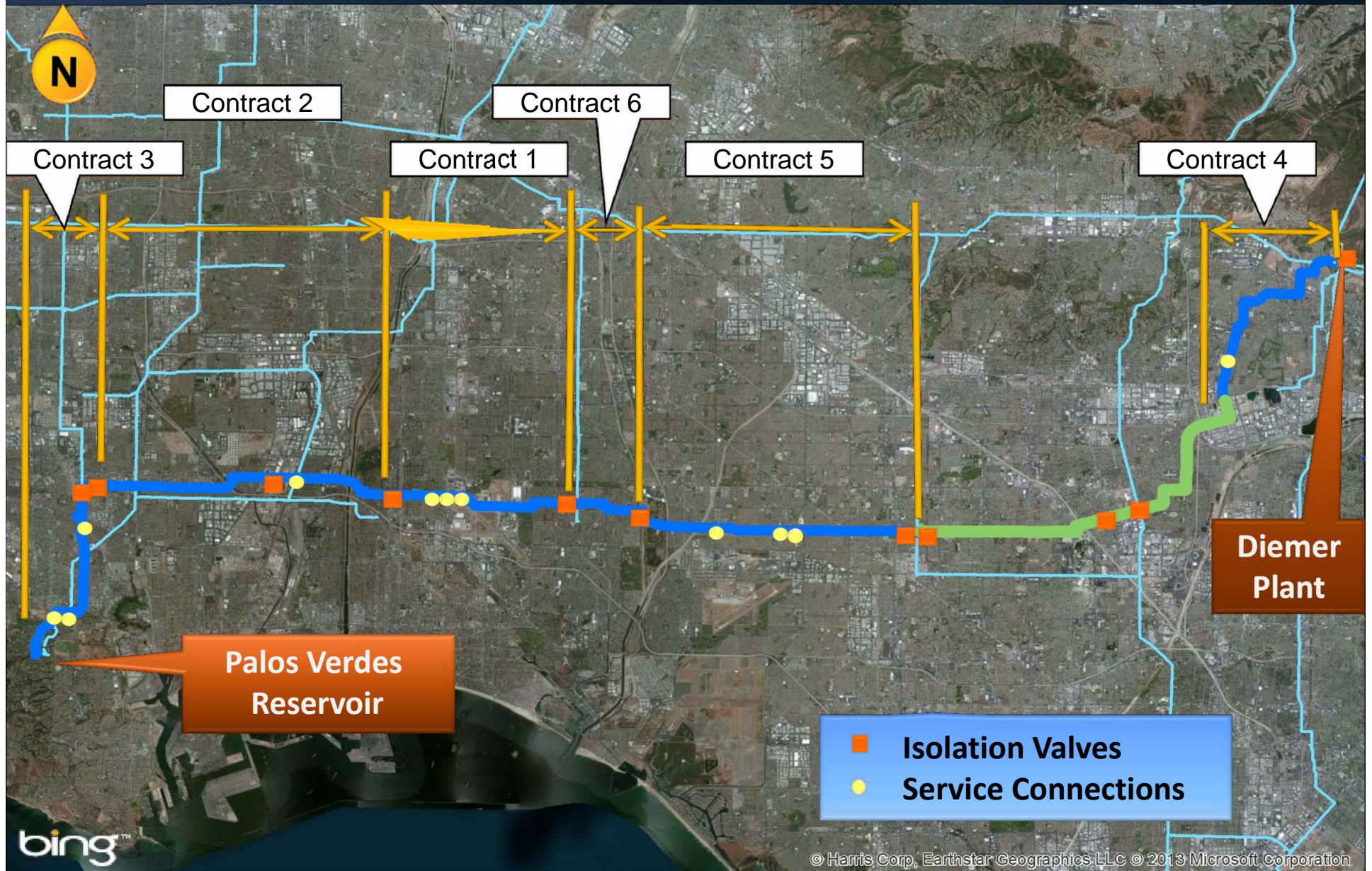


Scope of Long-Term Rehabilitation

- Line remaining 28 miles w/ mortar-lined steel cylinders
 - Access portals in public ROW
 - EIR to address potential impacts
- Hydraulic analyses
 - Upgrade undersized in-line meters & valves
 - Upgrade Pipeline interconnections as needed



Second Lower Feeder



Preliminary Design Activities

- Preliminary design – Black & Veatch
- Envir. documentation – ICF International
- Hydraulic model development – DHI, Inc.
- Value engineering – Specialty firm
- Management of program - Metropolitan staff
 - Program management
 - Technical oversight
 - Permitting
 - Hydraulic analyses
 - Shutdown planning
 - Outreach

Preliminary Design Agreement

- Black & Veatch

- Scope: Preliminary design
 - Perform utility investigation & potholing
 - Conduct geotechnical investigations
 - Identify construction easements
 - Prepare layout drawings
 - Develop construction cost estimates
 - Identify permitting requirements
- Competitively selected (RFQ 1032)
- SBE participation level 22%
- Amount NTE \$2.78 M

Envir. Documentation Agreement

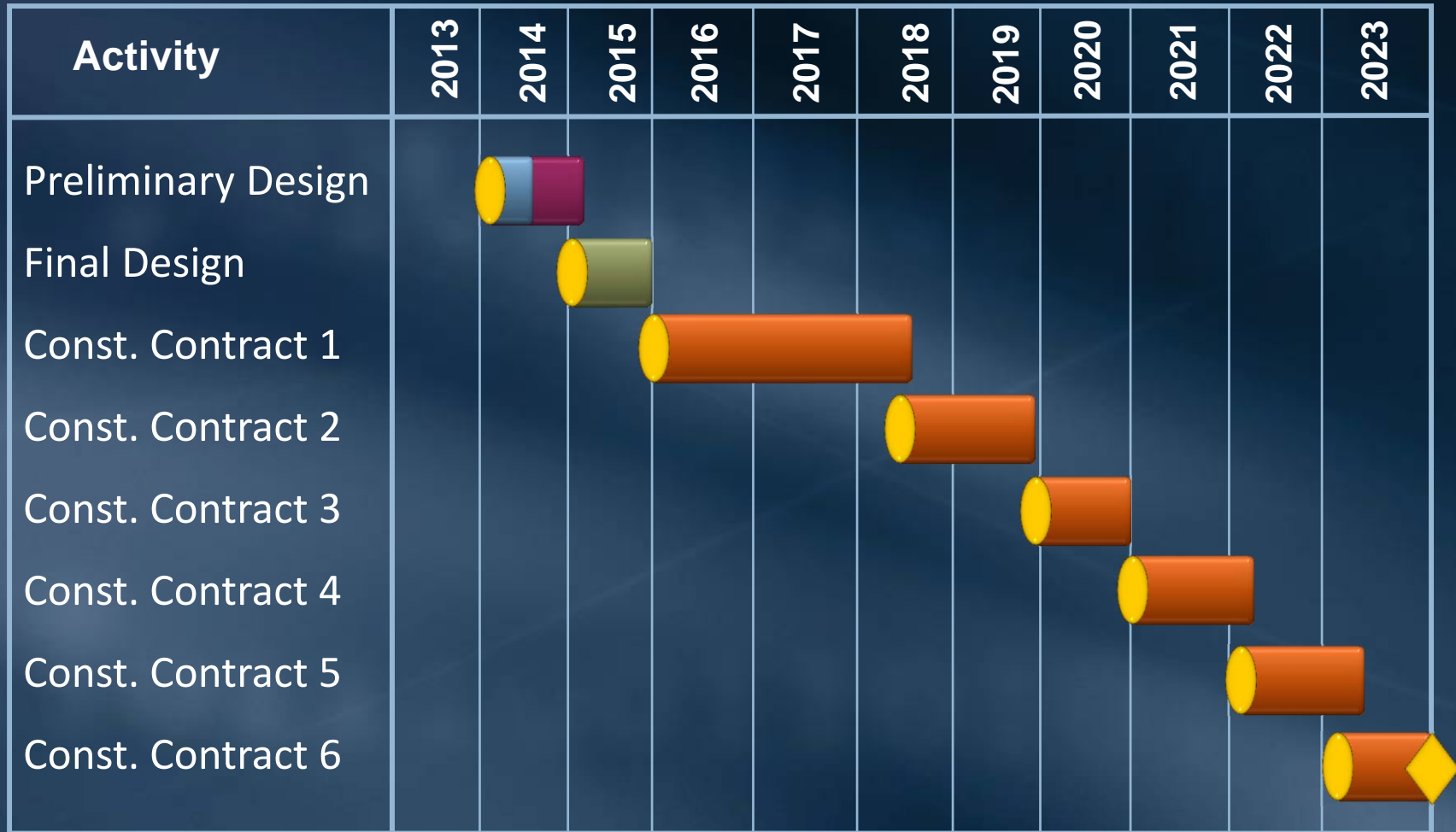
- ICF International

- Scope: Environmental documentation
 - Perform biological & habitat surveys
 - Identify construction impacts
 - Prepare environmental documentation
- Competitively selected (RFQ 956)
- SBE participation level 18%
- Increase amount by \$800,000, for new NTE total of \$950,000

Hydraulic Model Agreement

- DHI, Inc.
 - Scope: Develop system-wide hydraulic model
 - Electronic network of pipelines and facilities
 - Include logic from flow control structures
 - Calibration and verification
 - Competitively selected (RFP 675)
 - Amount NTE \$975,000
 - No funds required for this action

Schedule



Requested Funds

Labor

Studies & investigations	\$ 340,000
Proj. mgmt., permitting, right-of-way, outreach	590,000

Professional Services

Black & Veatch	2,780,000
ICF International	800,000
VE firm	100,000

Remaining Budget	490,000
------------------	---------

Total	\$ 5,100,000
-------	--------------

Est. Program Cost \$575 - \$625M

Board Options

- Option #1
 - Adopt CEQA determination that the proposed action is categorically exempt
 - Appropriate \$5.1 M
 - Authorize preliminary design to rehabilitate PCCP portions of the Second Lower Feeder
 - Authorize agreements with
 - Black & Veatch, Inc., in amount NTE \$2.78 M for preliminary design
 - ICF International, increase of \$800,000 for new NTE total of \$950,000, for envir. documentation
 - DHI, Inc., in amount NTE \$975,000 for a system-wide hydraulic model

Board Options

- Option #2
 - Do not authorize preliminary design at this time

Staff Recommendation

- Option #1

