



Adopt Final Resolutions for Annexation and Impose Water Standby Charges for Eastern's 103rd Fringe Area

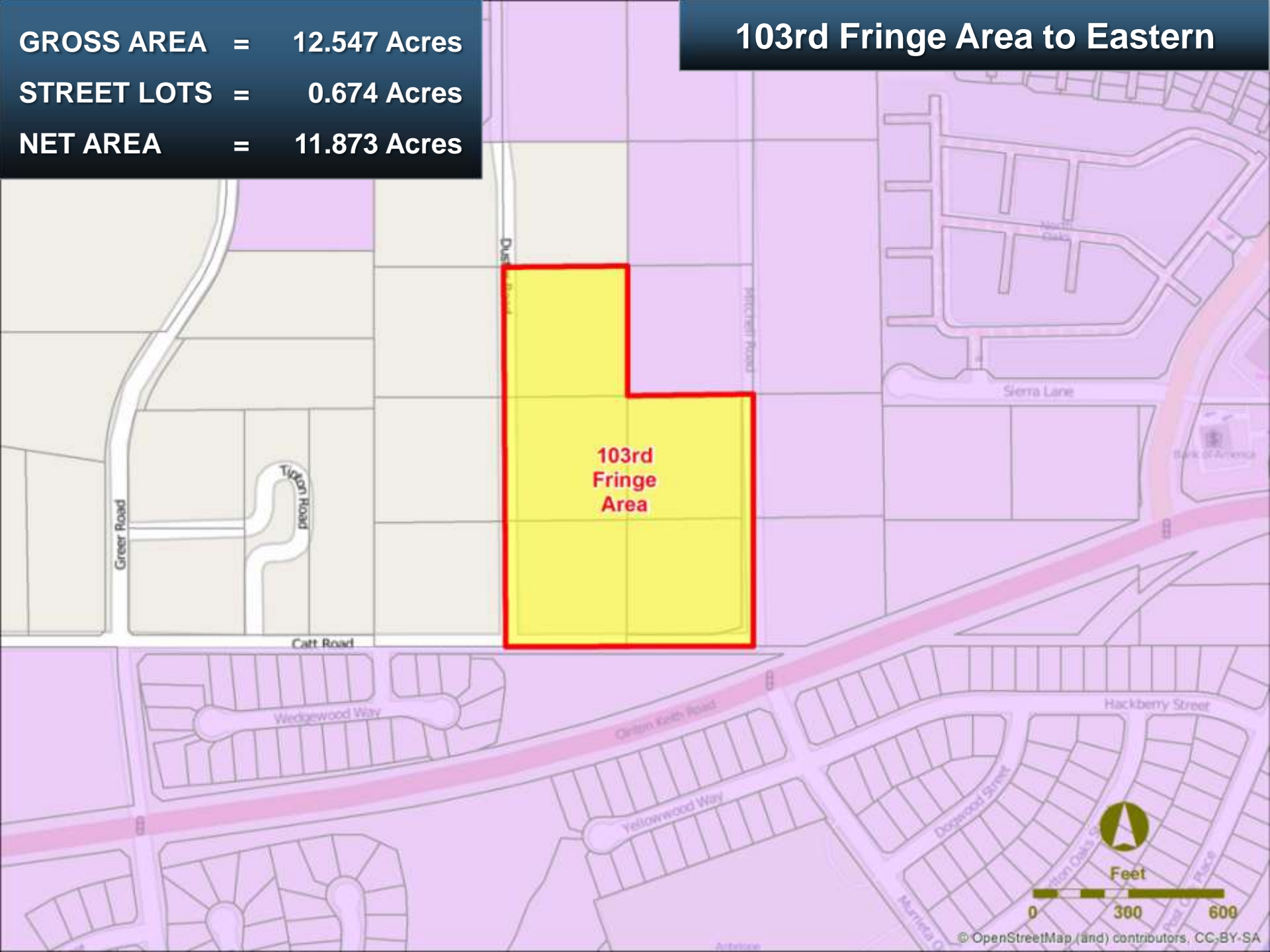
Finance & Insurance Committee
June 10, 2013



**Item # 7-4
Eastern MWD
103rd Fringe Area**

103rd Fringe Area to Eastern

GROSS AREA = 12.547 Acres
STREET LOTS = 0.674 Acres
NET AREA = 11.873 Acres



Summary

Annexation	Proposed Land Use	Acres	Annexation Charge	Increased Demand Upon Metropolitan (acre feet/yr)
Eastern 103 rd Fringe	Residential Development	12.547	\$ 51,611.93	50.18
Processing Charge			\$ 5,000	
TTAL		12.547	\$ 56,611.93	50.18 AFY

Board Options

- Option 1

- Adopt CEQA determination

- a) Adopt annexation resolution for the 103rd Fringe Area annexation to Eastern and Metropolitan
- b) Adopt resolution to impose water standby charge

- Option 2

- Decline the Request for annexation of 103rd Fringe Annexation

Staff Recommendation

- Option 1

