



# Water System Operations Manager's Report

Engineering and Operations Committee

Item 7a

March 11, 2013

# Current Operations

- SWP blend targets are 35% at Weymouth, Diemer, and Skinner
- February 2013 demands of 99 TAF were 8 TAF higher than February 2012
- The CRA is currently at a 7 pump flow
- 2013 SWP Allocation remains at 40%

# Diamond Valley Lake

## Storage Levels

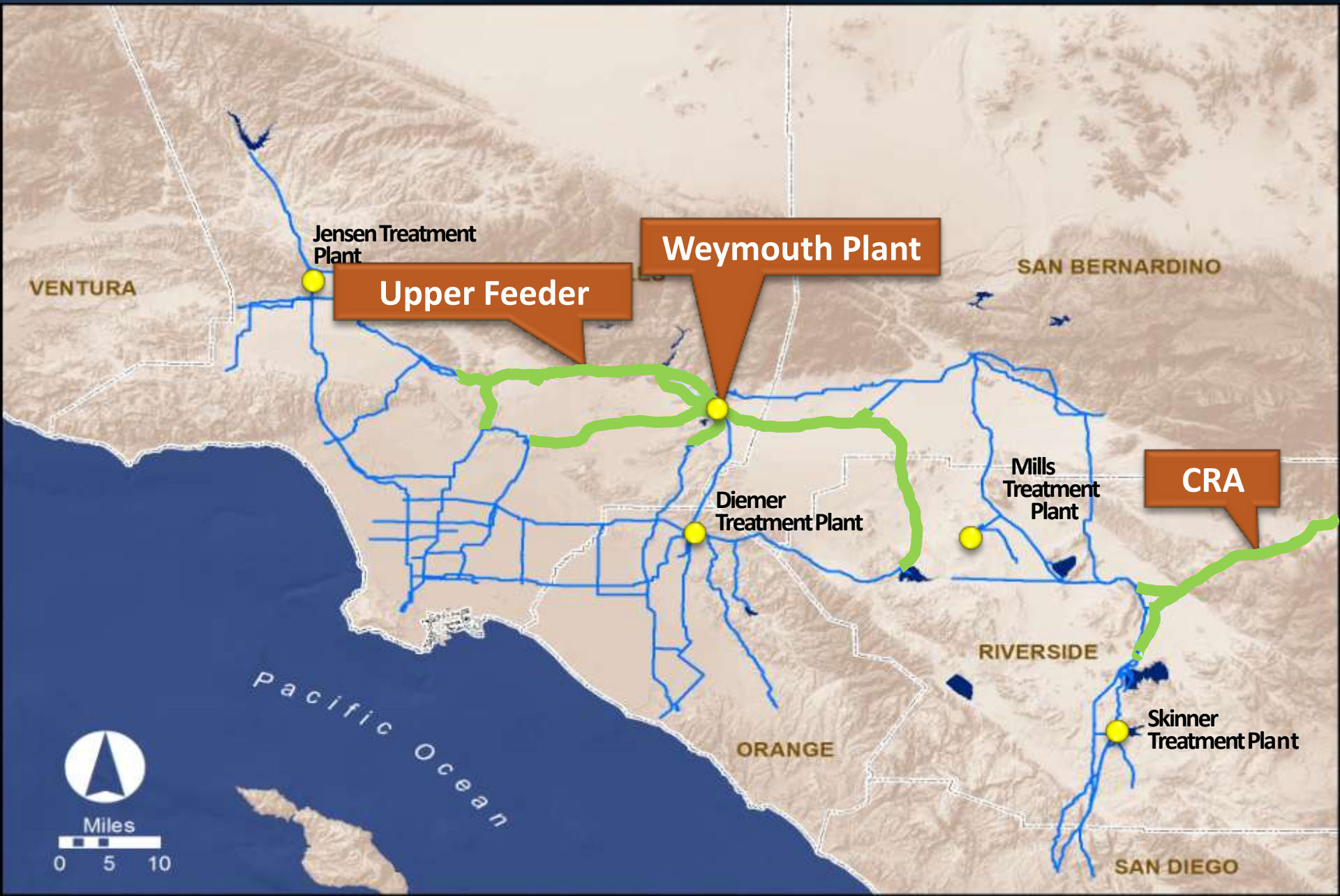


DVL: 86% of 810 TAF Maximum Storage

# Shutdowns

- Recently completed shutdowns include:
  - Colorado River Aqueduct
  - Weymouth Plant
  - Upper Feeder
- Upcoming shutdowns include:
  - Auld Valley Pipeline: Mar. 3 – 14
  - Second Lower Feeder: Mar. 15 – 23
  - Sepulveda Feeder: Apr. 1 – 13

# Weymouth Plant and Upper Feeder Shutdown



# 230kV Disconnect Replacement



# Delivery Line Expansion Joint



# High Voltage Equipment Testing





# Weymouth Diffuser



# Eagle Rock Gates



# Puddingstone Gates



# Ascot Tower



# Sierra Madre Emergency Service Connection



# Small Hydro Generation Agreement with Southern California Edison

- Existing sales contract terminates Oct 2013
- In December, responded to SCE solicitation
- In February, Board authorized General Manager to execute agreements if selected
- On February 28, notified that Metropolitan was not selected
- Continue to evaluate other options for the sale of energy from five of Metropolitan's small hydro plants

