



# **Conditional Annexation Request for Eastern Municipal Water District and Adopt Resolution of Intention to Impose Water Standby Charge**

Finance & Insurance Committee  
Item 7-3  
November 5, 2012

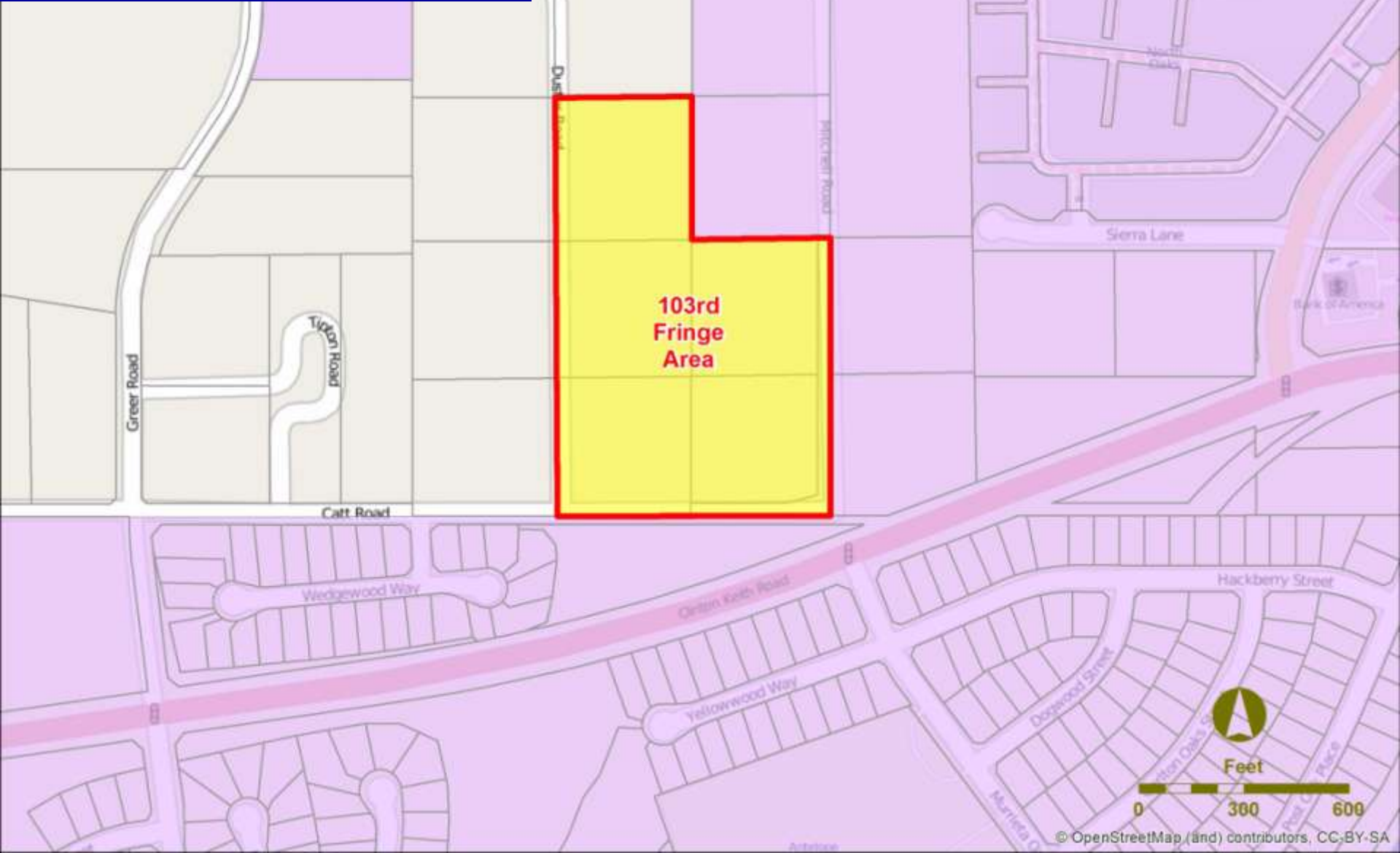


**Item # 7-3  
Eastern MWD  
103<sup>rd</sup> Fringe Area**

**GROSS AREA = 12.557 Acres**

**STREET LOTS = 0.674 Acres**

**NET AREA = 11.873 Acres**



# Summary

Annexation	Proposed Land Use	Acres	Annexation Charge	Increased Demand Upon Metropolitan (acre feet/yr)
103 <sup>rd</sup> Fringe Area	Residential Development	11.873	\$49,367.33	50.18
Processing Charge			\$ 5,000	
<b>TOTAL</b>		<b>11.873</b>	<b>\$ 54,367.33</b>	<b>50.18 AFY</b>

# Board Options

- Option 1
  - Adopt CEQA determination
    - a) Grant Conditional approval of 103<sup>rd</sup> Fringe Area annexation to Eastern and Metropolitan
    - b) Approve Eastern's Certificate of Water Use
    - c) Adopt the resolution of intent to impose water standby charge
- Option 2
  - Decline the Request for annexation of 103<sup>rd</sup> Fringe Annexation

# Staff Recommendation

- Option 1

