



Orange County Feeder Relocation

Engineering & Operations Committee
Item 7-6
November 5, 2012

Current Action

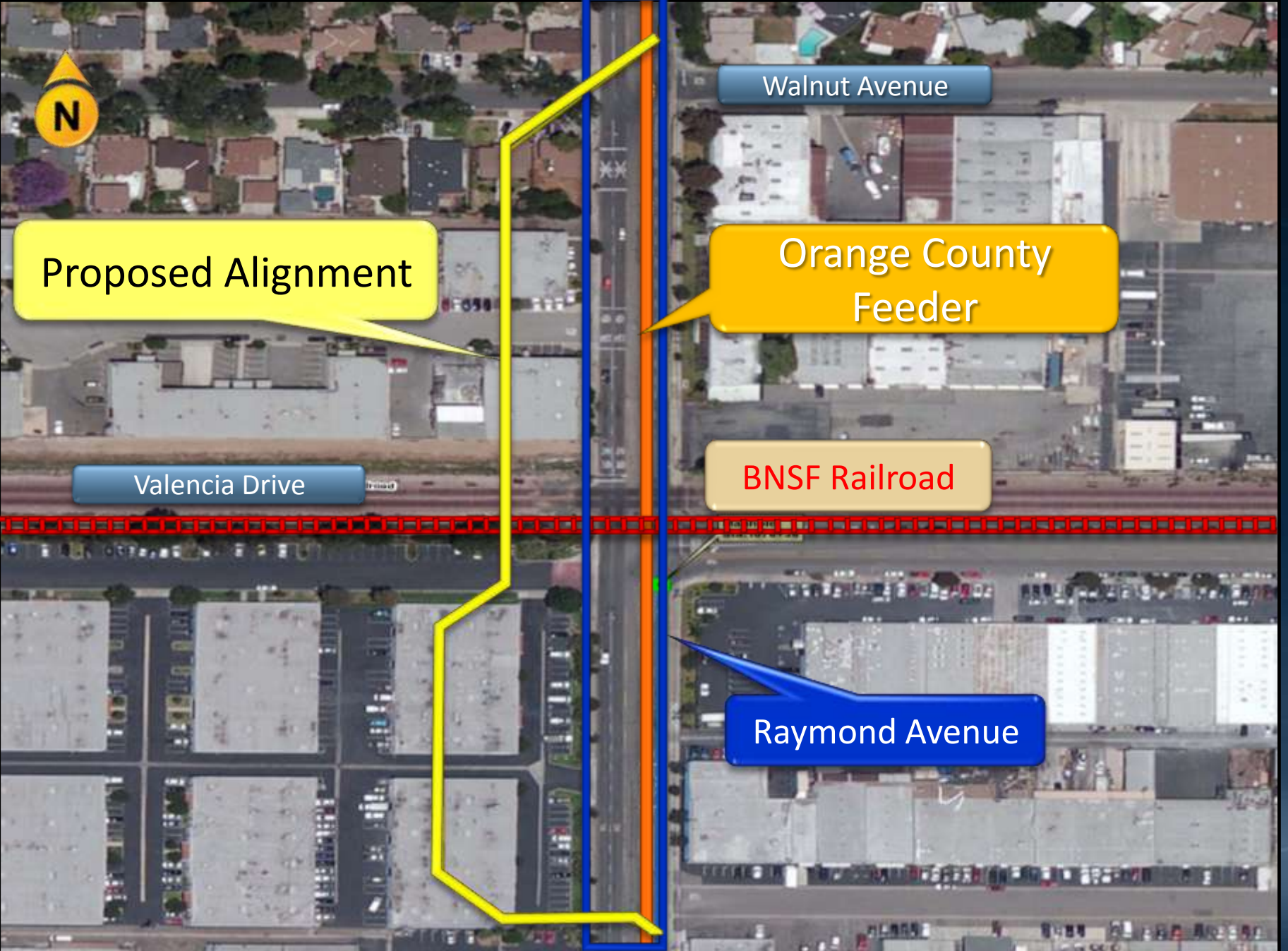
- Appropriate \$260,000
- Authorize final design to relocate a portion of Orange County Feeder

Location Map



Orange County Feeder Relocation

- Raymond Avenue/BNSF Grade Separation Project
 - City of Fullerton & Burlington Northern Santa Fe Railroad (BNSF)
 - Separates railroad traffic from vehicular & pedestrian traffic
 - Improves safety
 - Reduces traffic delays
 - Minimizes disruptions to rail operations
 - Impacts Orange County Feeder & multiple utilities



Proposed Alignment

Walnut Avenue

Orange County Feeder

Valencia Drive

BNSF Railroad

Raymond Avenue

Background

Raymond Avenue Grade Separation Project



- Scope of Orange County Feeder Relocation Project
 - Relocation of approx. 1,100 feet of steel pipeline
 - Relocation of air release valves, vacuum valves, manholes, etc.

Scope of this Action

- Metropolitan to perform final design
 - Prepare final design drawings & specs
 - Coordinate r/w easements
 - Prepare construction cost estimate
- City of Fullerton contractor will install new pipeline

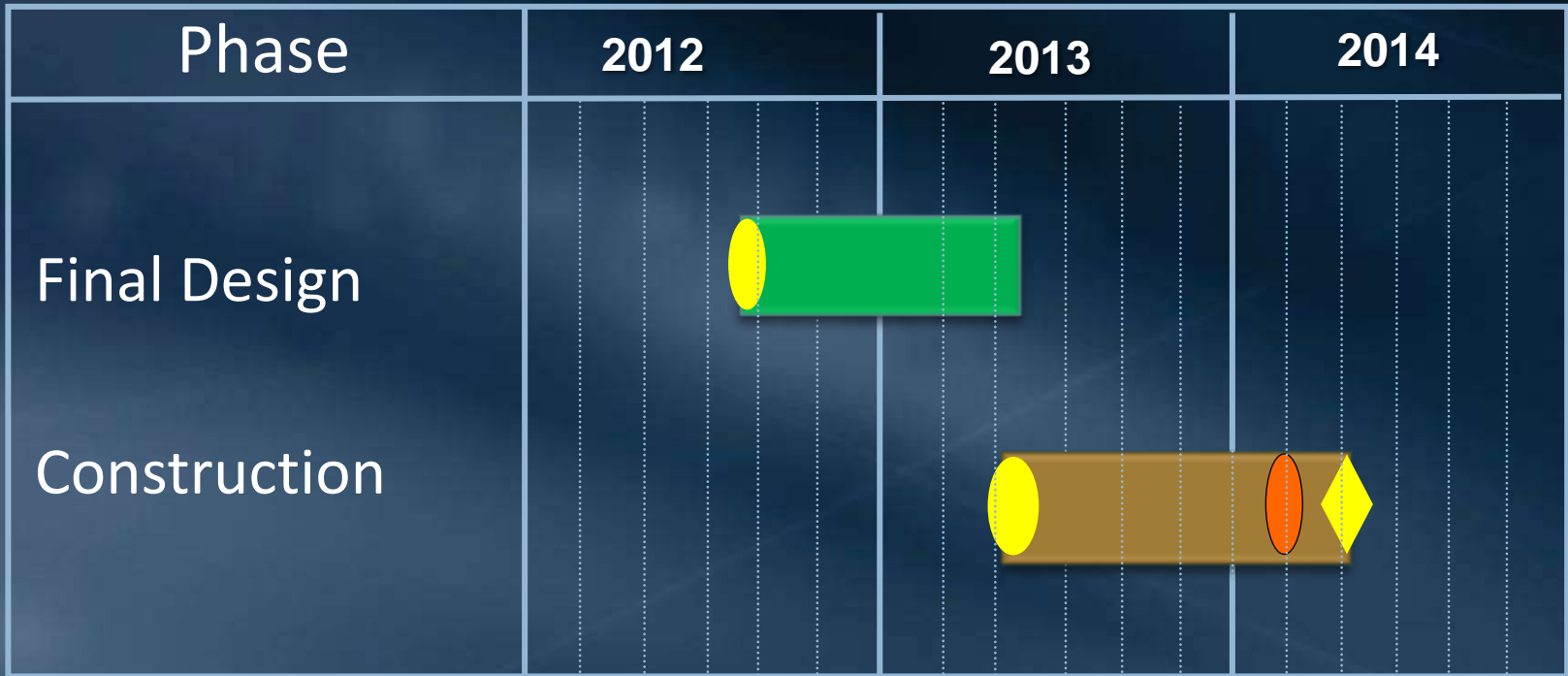
Requested Funds

Labor

Final design	\$ 189,000
Project mgmt., & r/w activities	71,000

Total: \$ 260,000

Schedule



 Construction

 Board Action

 Final Design

 Shutdown

 Project Completion

Board Options

- Option #1
 - Adopt CEQA determination
 - Appropriate \$260,000
 - Authorize final design to relocate a portion of the Orange County Feeder
- Option #2
 - Do not proceed w/ final design to relocate a portion of the Orange County Feeder via the city of Fullerton's construction contract

Staff Recommendation

- Option #1

