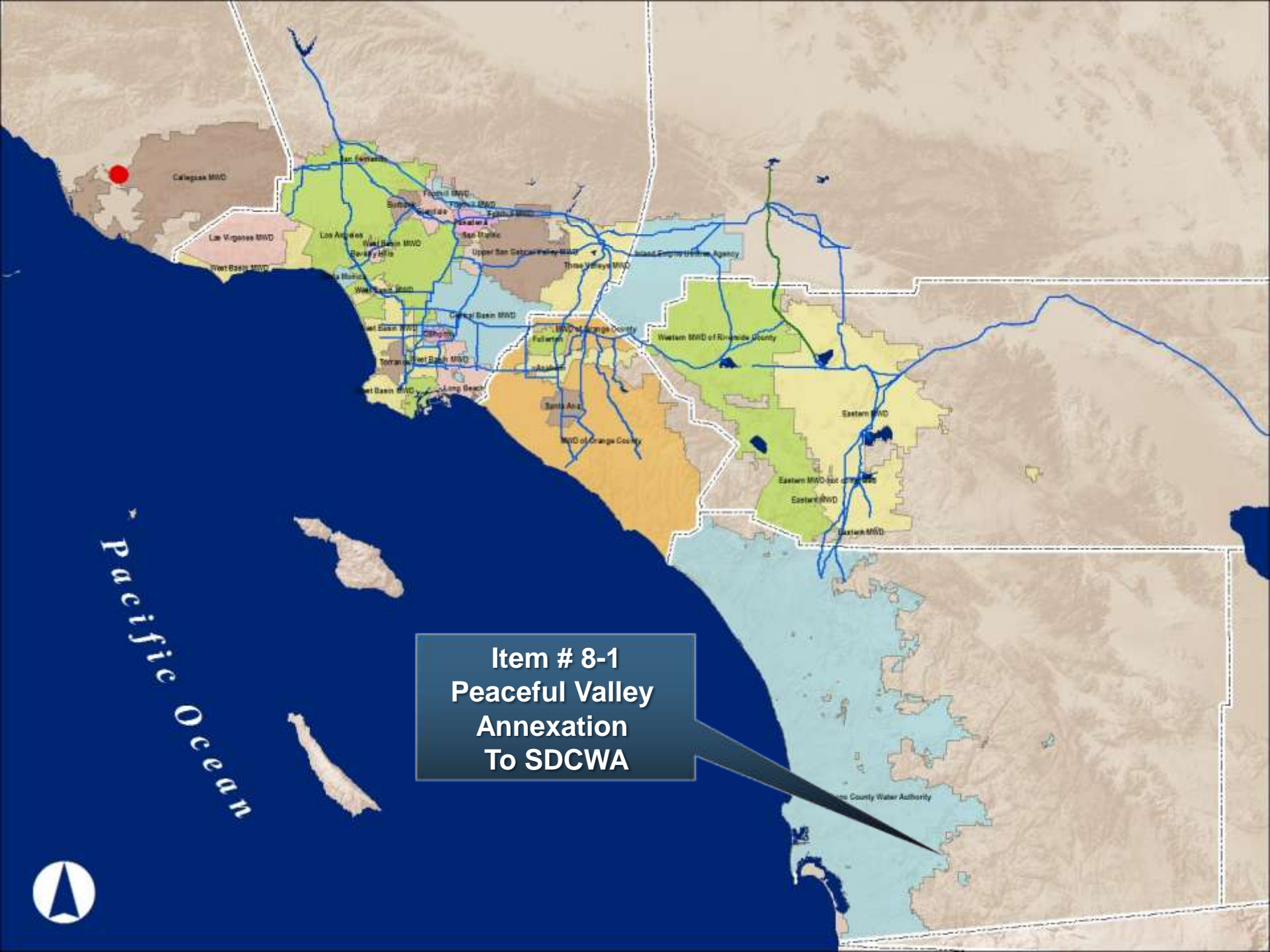




Adopt Final Resolution and Impose Standby Water Charge for Peaceful Valley Ranch Annexation to SDCWA

Finance & Insurance Committee
Item 7-3
December 13, 2011

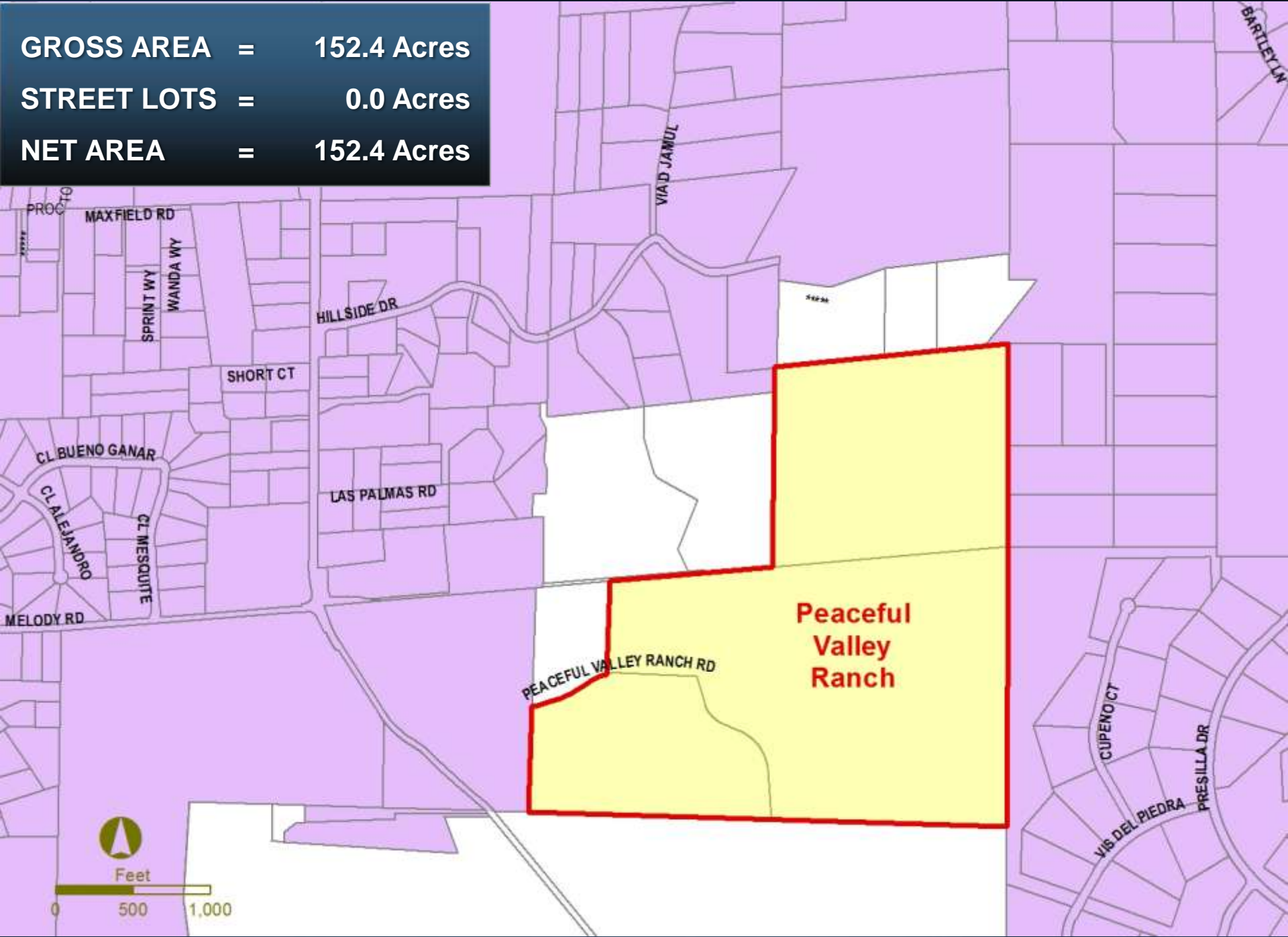


**Item # 8-1
Peaceful Valley
Annexation
To SDCWA**

GROSS AREA = 152.4 Acres

STREET LOTS = 0.0 Acres

NET AREA = 152.4 Acres



Summary

Annexation	Proposed Land Use	Acres	Annexation Charge	Increased Demand Upon Metropolitan (acre feet/yr)
Peaceful Valley	Residential Development	152.4	\$ 615,238.80	70
Processing Charge			\$ 5,000	
TOTAL		152.4	\$ 620,238.80	70 AFY

Board Options

● Option 1

- Adopt the CEQA determination
- Adopt resolution granting SDCWA's request for approval of Peaceful Valley Ranch annexation to SDCWA and Metropolitan , and establishing Metropolitan's terms and conditions for the annexation: and
- Adopt the resolution to impose water standby charge at a rate of \$11.51 per acre or per parcel of less than one acre, within the proposed annexation area.

● Option 2

- Decline the Request

Staff Recommendation

- None

