



# Metropolitan's Reserve Management and Mitigation Banking

Engineering & Operations Committee  
Item 6-A  
November 8, 2010

# Outline

- California Environmental Quality Act (CEQA)
- Typical CEQA Tasks for a Capital Project
- CEQA Mitigation Sequence
- Environmental Impacts and Mitigation
- Metropolitan Participating Reserves
  - Lake Mathews Multi-Species Reserve
  - Box Springs Feeder Project Example

# California Environmental Quality Act (CEQA)

- Enacted 1970
- Maintain a high-quality environment
- Applies to projects that
  - may cause *direct* physical
  - or *indirect* physical environmental change
- Assess project impacts
- Identify mitigation measures

# Typical Capital Project CEQA Tasks

## Project Phases

Preliminary  
Design

- Authorize preparation of environmental documents

Final  
Design

- Certify environmental documents
- Approve project
- Adopt Mitigation Plan

Construction

- Authorize mitigation steps

Board Action

# CEQA Mitigation Sequence

- Step 1:
  - Avoid
  - Minimize
  - Rectify/Rehabilitate
  - Reduce
- Step 2 (if required)
  - Compensate/Substitute
    - Streambed and Wetlands Mitigation
    - Endangered Species Mitigation

# Environmental Mitigation

	<b>Streambed and Wetlands Mitigation</b>	<b>Endangered Species Mitigation</b>
<b>Typical Impacts</b>	<ul style="list-style-type: none"><li>• Alteration</li><li>• Water quality</li></ul>	<ul style="list-style-type: none"><li>• Harm</li><li>• Impairment</li></ul>
<b>Typical Mitigation</b>	<ul style="list-style-type: none"><li>• Restore impacted site</li><li>• Restore off-site habitat</li><li>• Purchase mitigation credits</li></ul>	<ul style="list-style-type: none"><li>• Establish a reserve</li><li>• Purchase credits from an existing reserve</li><li>• Acquire land and deed it to an existing reserve</li></ul>
<b>Jurisdictional Agencies</b>	<ul style="list-style-type: none"><li>• Calif. Dept. of Fish &amp; Game</li><li>• Regional Water Quality Control Board</li><li>• Army Corp of Engineers</li></ul>	<ul style="list-style-type: none"><li>• US Fish &amp; Wildlife Service</li><li>• Calif. Dept. of Fish &amp; Game</li></ul>

Shell/MWD  
Mitigation-Chino  
Hills Park Reserve

Lake Mathews  
Multi-Species  
Reserve

San Jacinto  
Wildlife Reserve

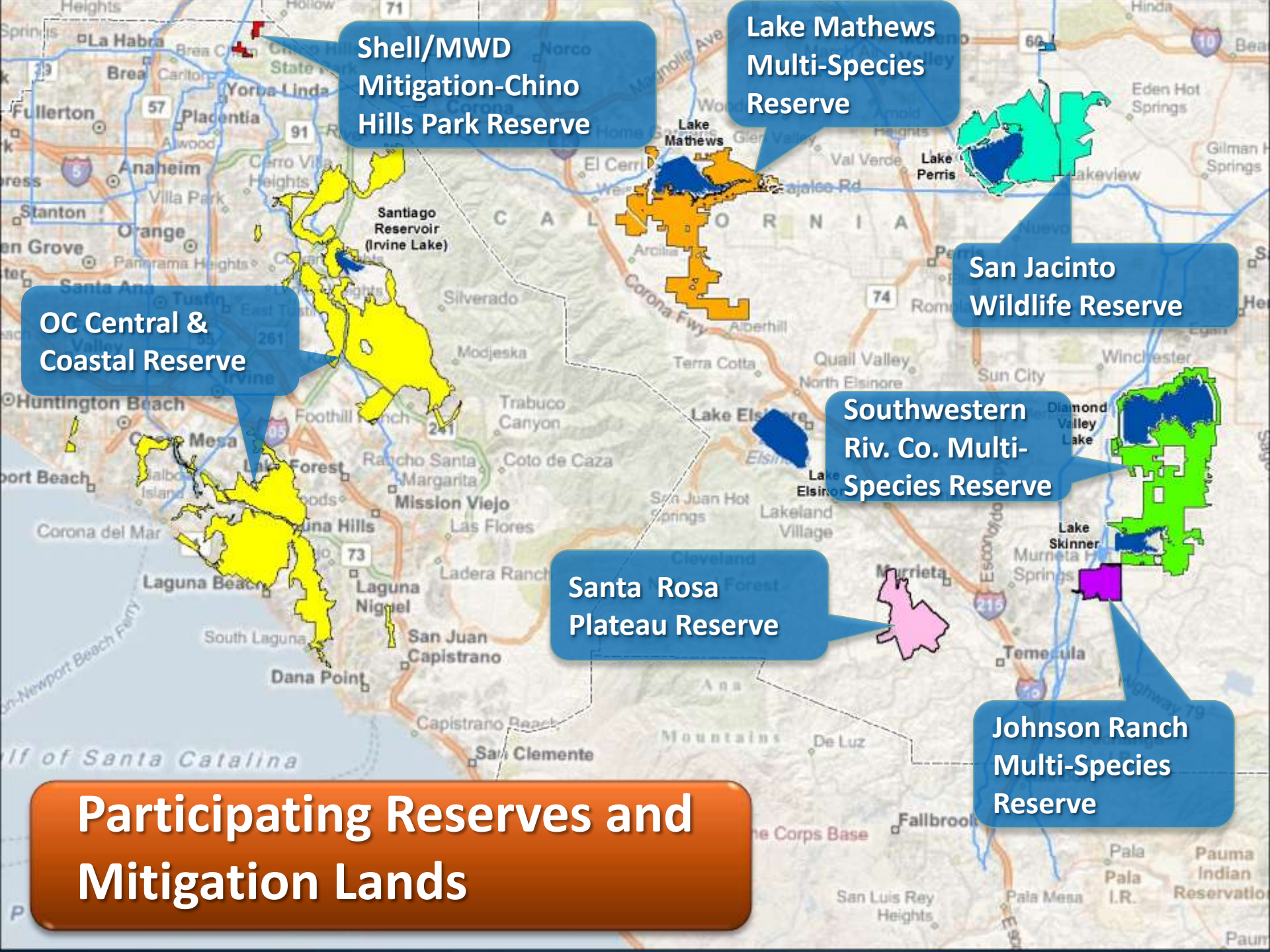
OC Central &  
Coastal Reserve

Southwestern  
Riv. Co. Multi-  
Species Reserve

Santa Rosa  
Plateau Reserve

Johnson Ranch  
Multi-Species  
Reserve

**Participating Reserves and  
Mitigation Lands**



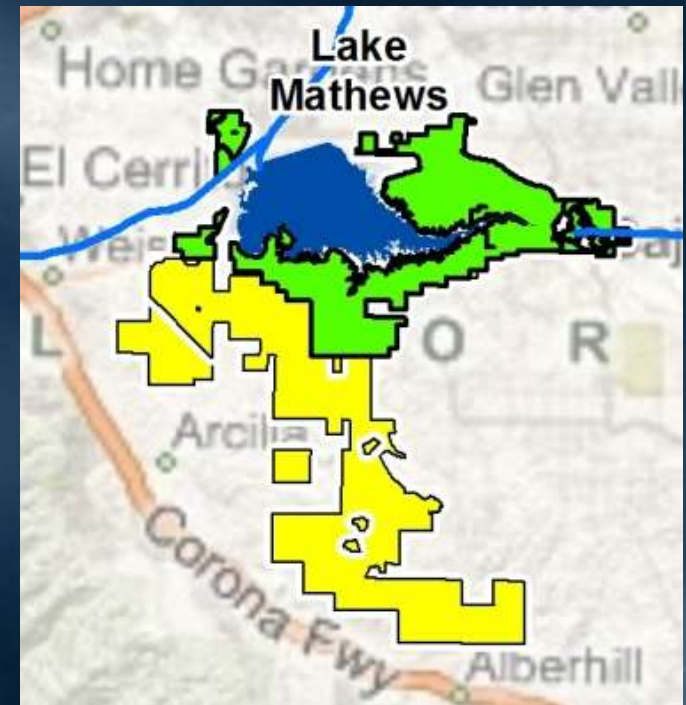
# Metropolitan Participating Reserves

Reserve	Year Established	Metropolitan's Contribution	Benefitting Projects	Available Credits?
Lake Mathews Multi-Species	1995	5,110 acres	Lake Mathews O&M, Cajalco Dam, Other	Yes
Santa Rosa Plateau	1991	\$18 million	Diamond Valley Lake, San Diego #6	Yes
Southwestern Riverside County Multi-Species	1992	\$28 million + land cont. + \$200 K / yr.	Diamond Valley Lake, Inland Feeder, Skinner Module #7, Cajalco Creek	Yes
Metropolitan/Shell (Chino Hills State Park)	1993	\$1.75 million	Diemer Improvements, North Access Road	No
Orange County Central & Coastal	1996	\$1 million	Allen McColloch Pipeline, Santiago Lateral, CPA	Yes
Johnson Ranch Multi-Species	2000	Expedited Service Connection	By-Pass #3 San Diego #6	No
San Jacinto Wildlife Corporate Resources	1979	\$800,000	Inland Feeder	No



# Lake Mathews Multiple Species Reserve

- Metropolitan, California Department of Fish and Game (F&G), U.S. Fish and Wildlife Service (USFWS), Riverside County Habitat Conservation Agency (RCHCA)
- Part of an 11,000 acre reserve
- Mitigated Projects
  - Cajalco Dam and Detention Basin
  - Skinner Filtration Plant
    - Reliability and Quality Program
  - Box Springs Feeder
    - Phase 3 Repair Project
- 14 Habitat types, 50 sensitive species



Lake Mathews  
Multi-Species Reserve

# Lake Mathews Multi-Species Reserve

**Habitat Type**      **Total Acres**      **% Habitat Remaining**

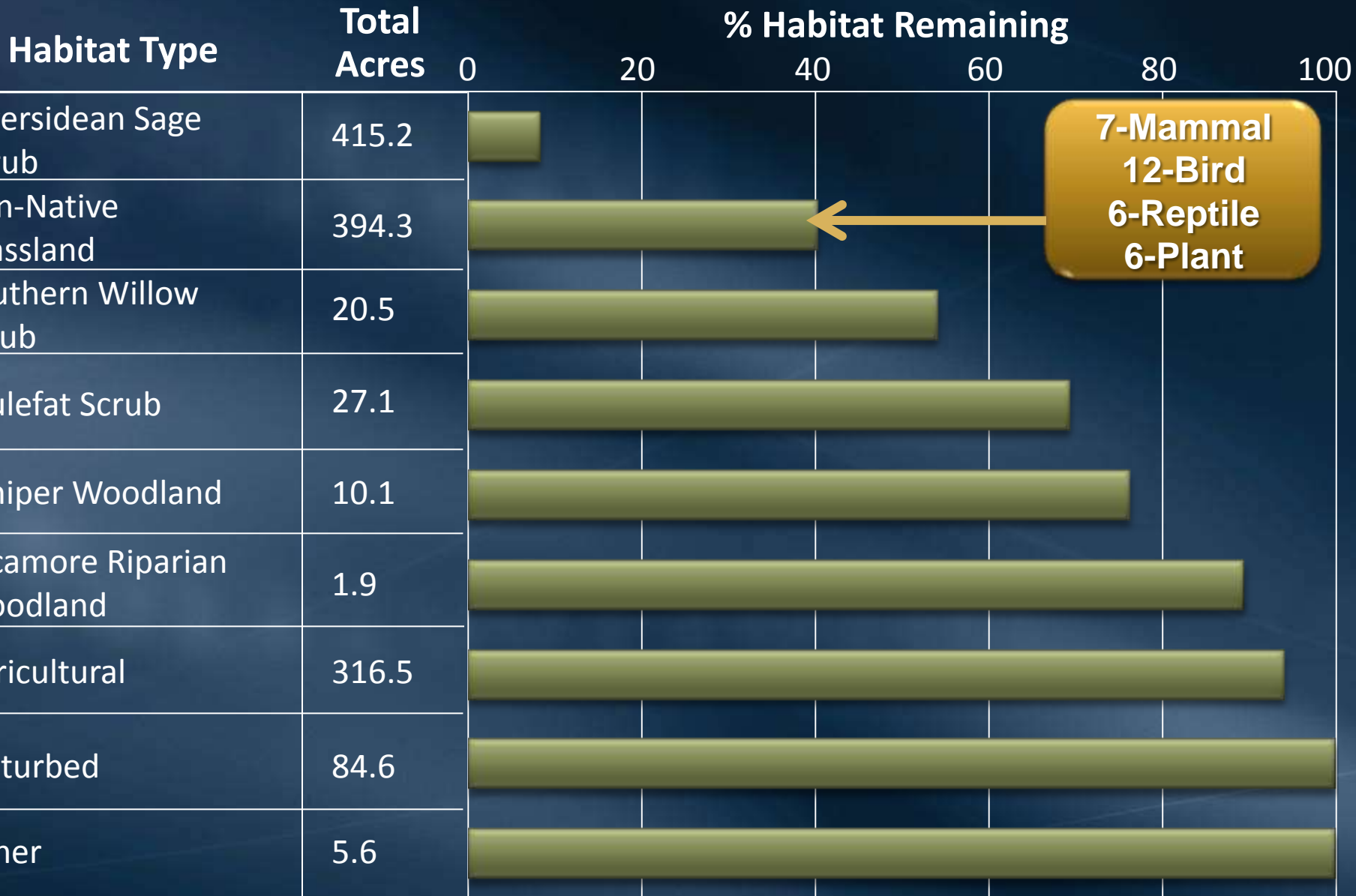
0      20      40      60      80      100



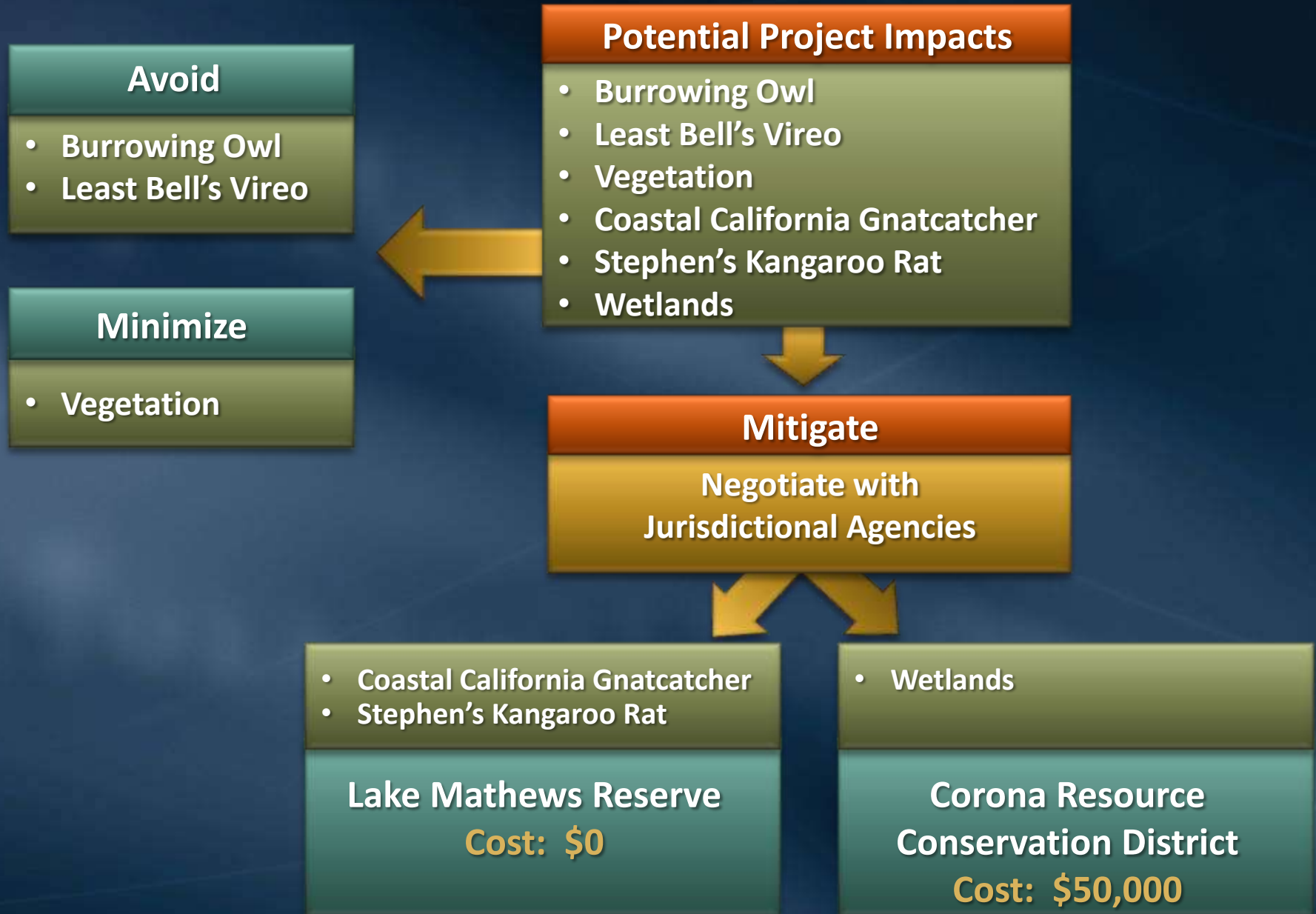
# Lake Mathews Multi-Species Reserve



# Lake Mathews Multi-Species Reserve



# Box Springs Feeder Phase-III Repair



# Summary & Benefits

- Approximately 1-3 capital projects per year require ESA or Wetlands Mitigation
- Most project are mitigated using established reserves for habitat credits
  - Simplifies the mitigation process
  - Expedited project completion
- Ample endangered species mitigation credits remain
- No wetlands mitigation credit available
- Consistent with Metropolitan's mission statement

