

A sunset over a body of water with mountains in the background. The sun is low on the horizon, casting a golden glow across the sky and reflecting on the water. The sky is filled with soft, wispy clouds. The water is calm, and the mountains in the distance are silhouetted against the bright sky. The overall mood is peaceful and serene.

# **Opportunities for Early Habitat Actions in the Delta**

**Special Committee on Bay-Delta**

**Item 4d**

**October 26, 2010**

# Presentation Outline

- Purpose
- Participating Interests
- Accomplishments
- Next Steps

# Delta Improvement Strategy



Bay-Delta Conservation Plan

- **Resource/Regulatory Strategy**
  - **Near-Term Measures**
  - Bay-Delta Conservation Plan



- **Legislative Framework**
  - Delta policy bills
  - Bond measure

# Near-Term Habitat Restoration Process

- Collaborative effort
  - State & Federal agencies
  - Environmental interests
  - Local counties & conservancies
  - Stakeholders
- State/Federal Water Contractors JPA
  - Lead Agency on Yolo Bypass project
  - Consultants



# Delta Near-Term Measures

## Ecosystem Restoration



Suisun Marsh

Cache Slough

Yolo Bypass

Sacramento

Dutch Slough

SWP Pumps

CVP Pumps

**~ 22,000 acres by 2019**  
**Bio Opinion Requirement**

Restoration	Targets
Tidal Marsh	8,000 ac
Seasonal Floodplain	14-17,000 ac

# Bay-Delta Conservation Plan

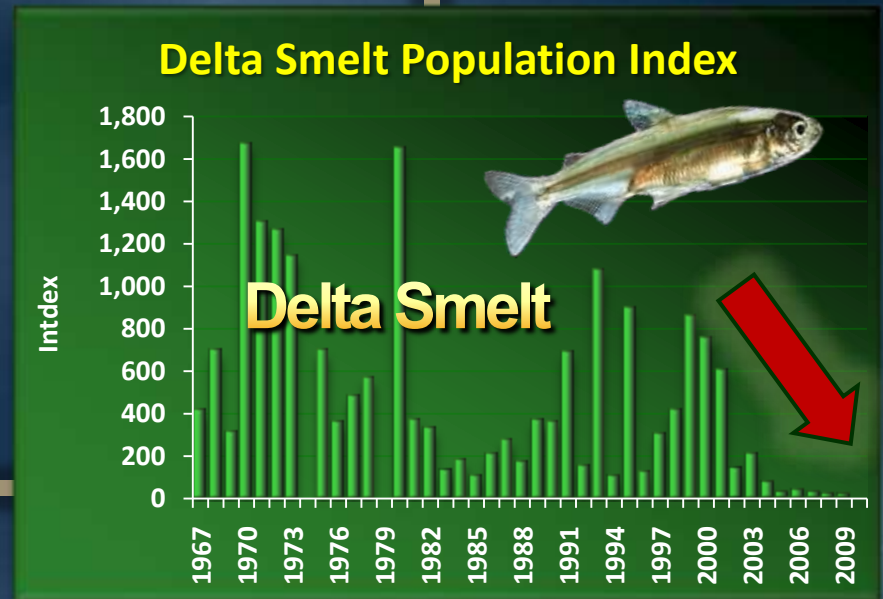
## Ecosystem Restoration Target Areas



Restoration	Targets
Tidal Marsh	65,000 ac
Seasonal Floodplain	10,000 ac
Riparian Habitat	5,000 ac
River Channel Margin	20 mi
<b>TOTAL</b>	<b>80,000 ac</b>

# Delta Fisheries

## Delta Smelt & Salmon



# Bay-Delta Conservation Plan

## Yolo Bypass – Habitat & Food-Web Opportunities





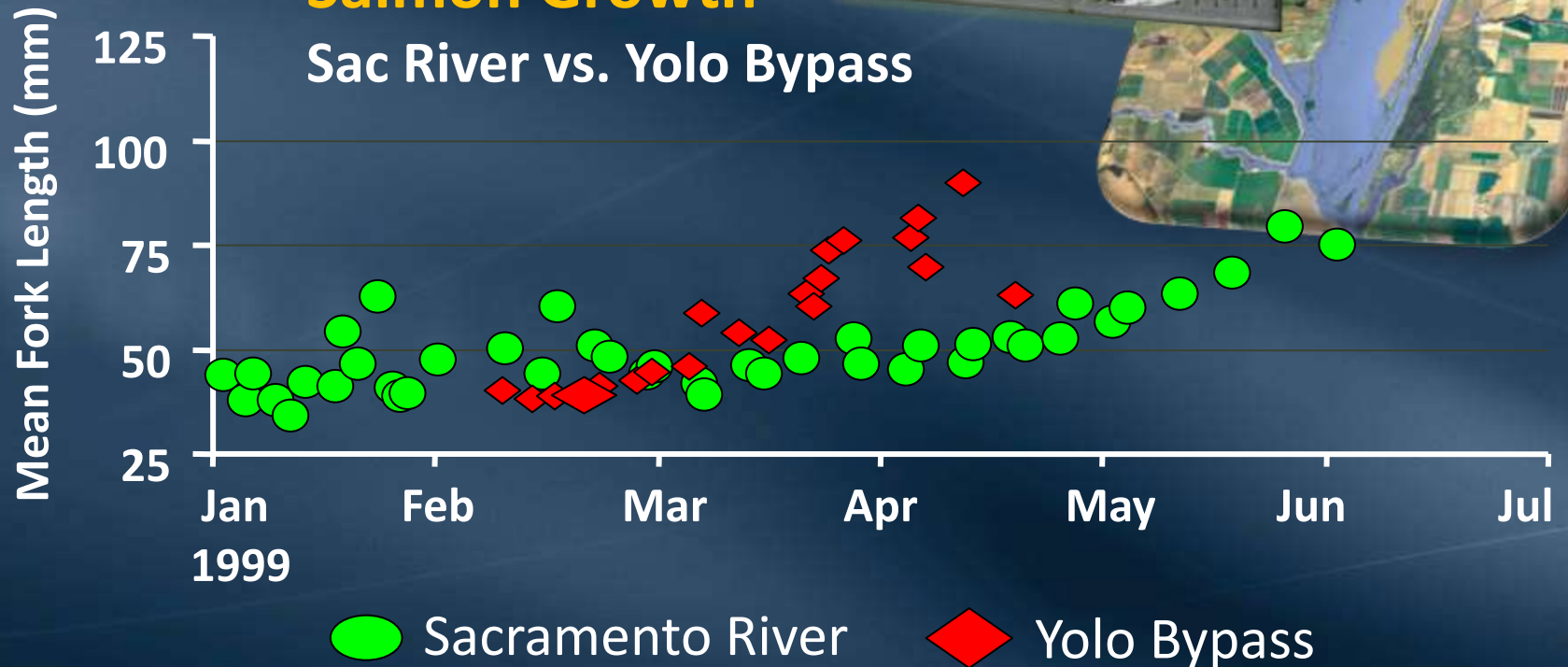


# Bay-Delta Conservation Plan

## Yolo Bypass – Supports Increased Fish Growth

### Salmon Growth

Sac River vs. Yolo Bypass

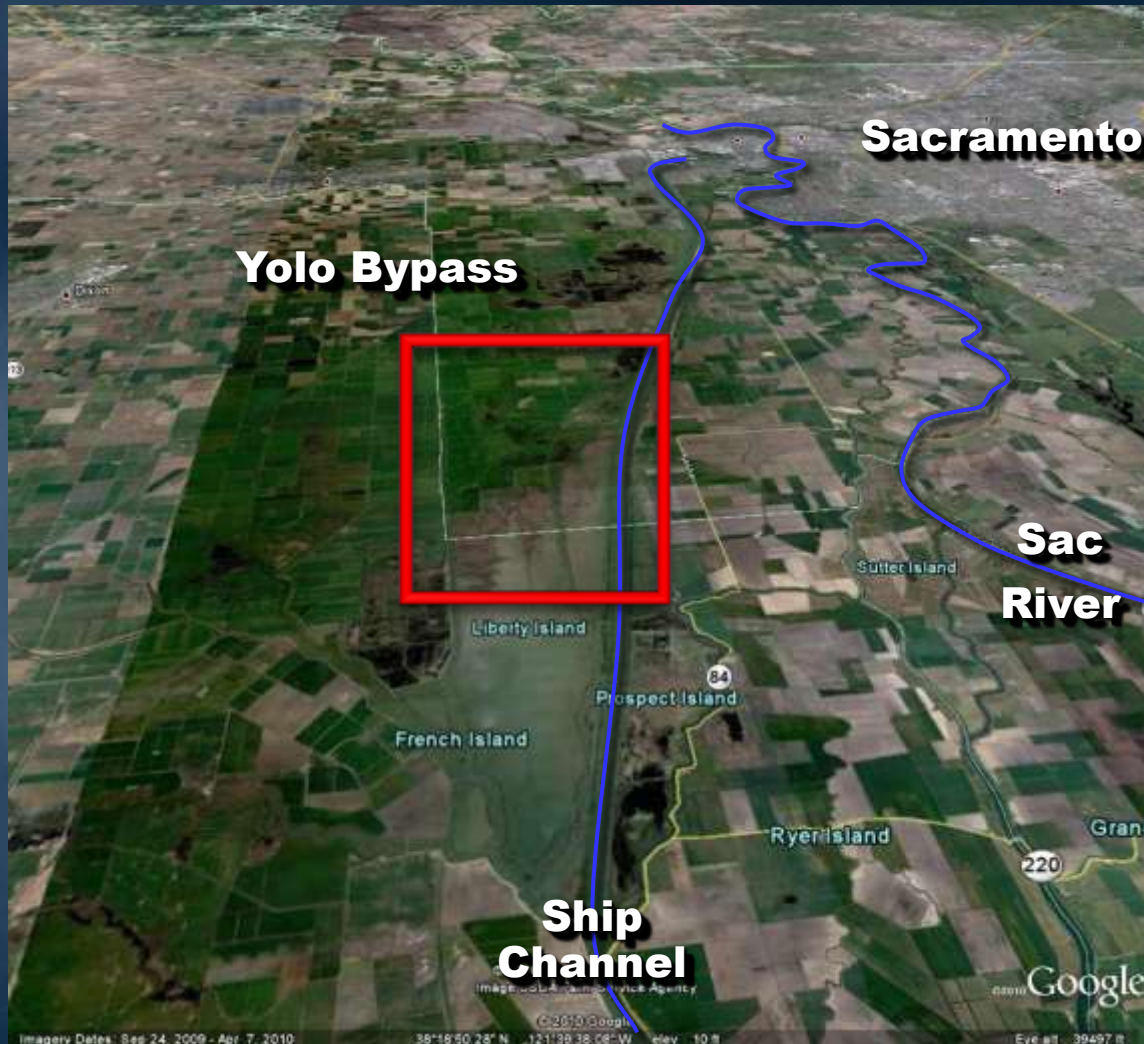


# **Near-Term Habitat Restoration**

## **Yolo Ranch Restoration Proposal**

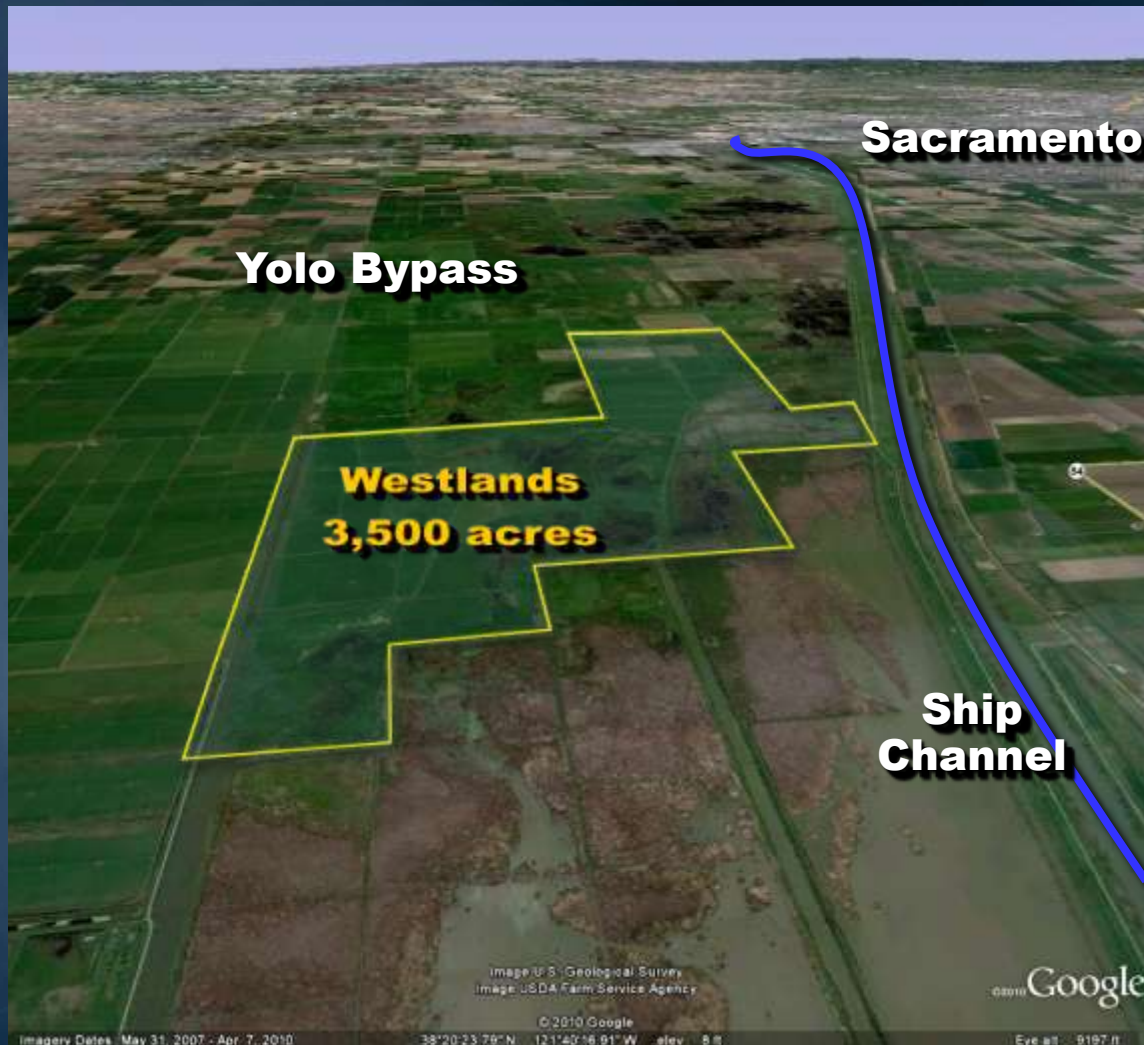
# Near-Term Habitat Restoration

## Yolo Ranch Restoration Proposal



# Near-Term Habitat Restoration

## Yolo Ranch Restoration Proposal



# Near-Term Habitat Restoration

## Yolo Ranch Restoration Proposal



**Critical land-water interface**

**Existing**

Lands elevation suitable for tidal marsh habitat

# Near-Term Habitat Restoration

## Yolo Ranch Restoration Proposal



**Future**

Restored tidal wetlands

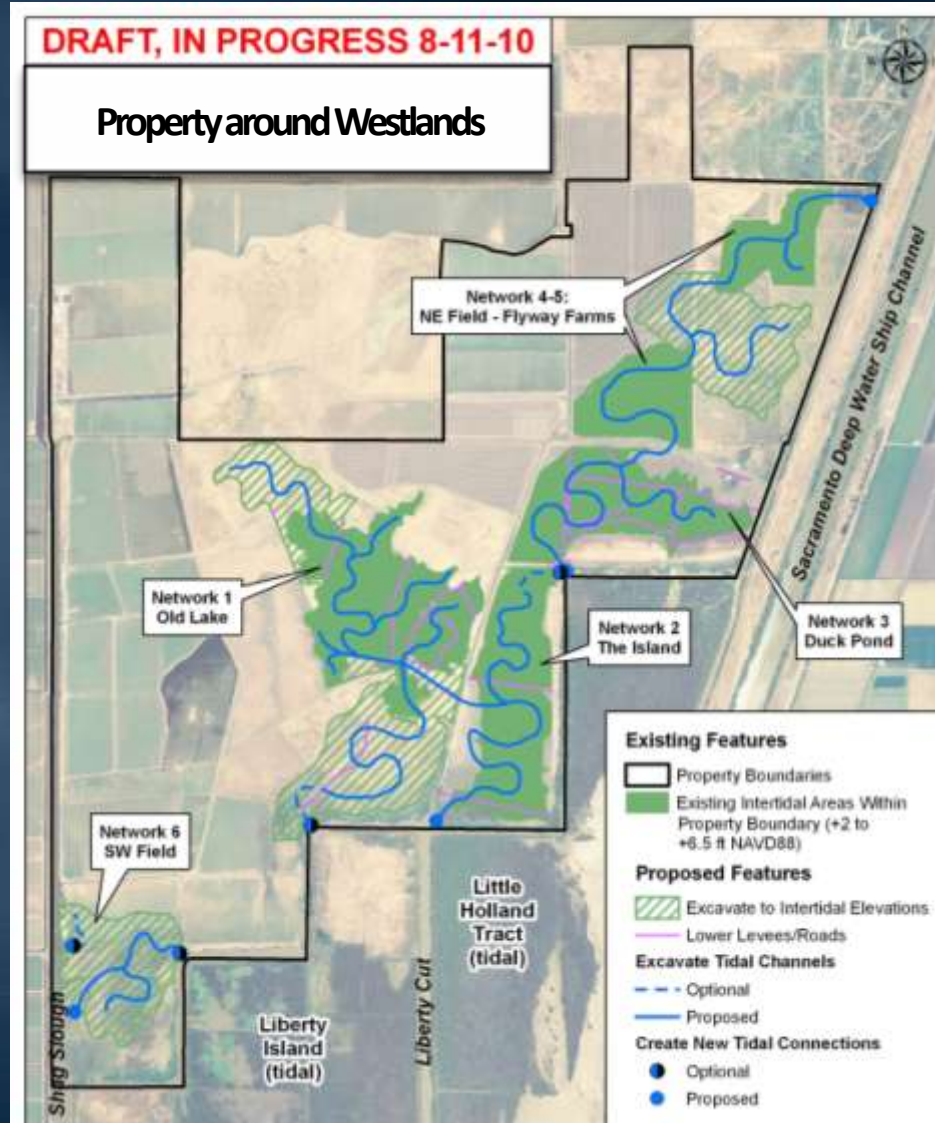
# Near-Term Habitat Restoration

## Yolo Ranch Restoration Proposal

- Status Update & Accomplishments
  - Westlands Water District acquisition
  - Hydrodynamic modeling
  - Field surveys
  - Wetlands design
  - Outreach and agreements
  - Permitting and environmental documentation

# Near-Term Habitat Restoration

## Yolo Ranch Habitat Restoration Proposal





# Lower Yolo Bypass Habitat Project Next Steps

- Finalize flood model
- Secure CEQA/permits (early 2011)
- Complete Wetlands design
- Develop adaptive management program
- Execute funding restoration agreements
- Begin construction (Summer/Fall 2011)

# **Near-Term Habitat Restoration**

## **Future Opportunities**

# Near-Term Habitat Restoration

Future Opportunities

Suisun  
Marsh



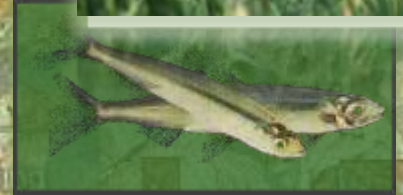
# Near-Term Habitat Restoration

Future Opportunities

## Suisun Marsh

### Grizzly Bay Complex

### South of Roaring River Complex



# Near-Term Habitat Restoration

Future Opportunities

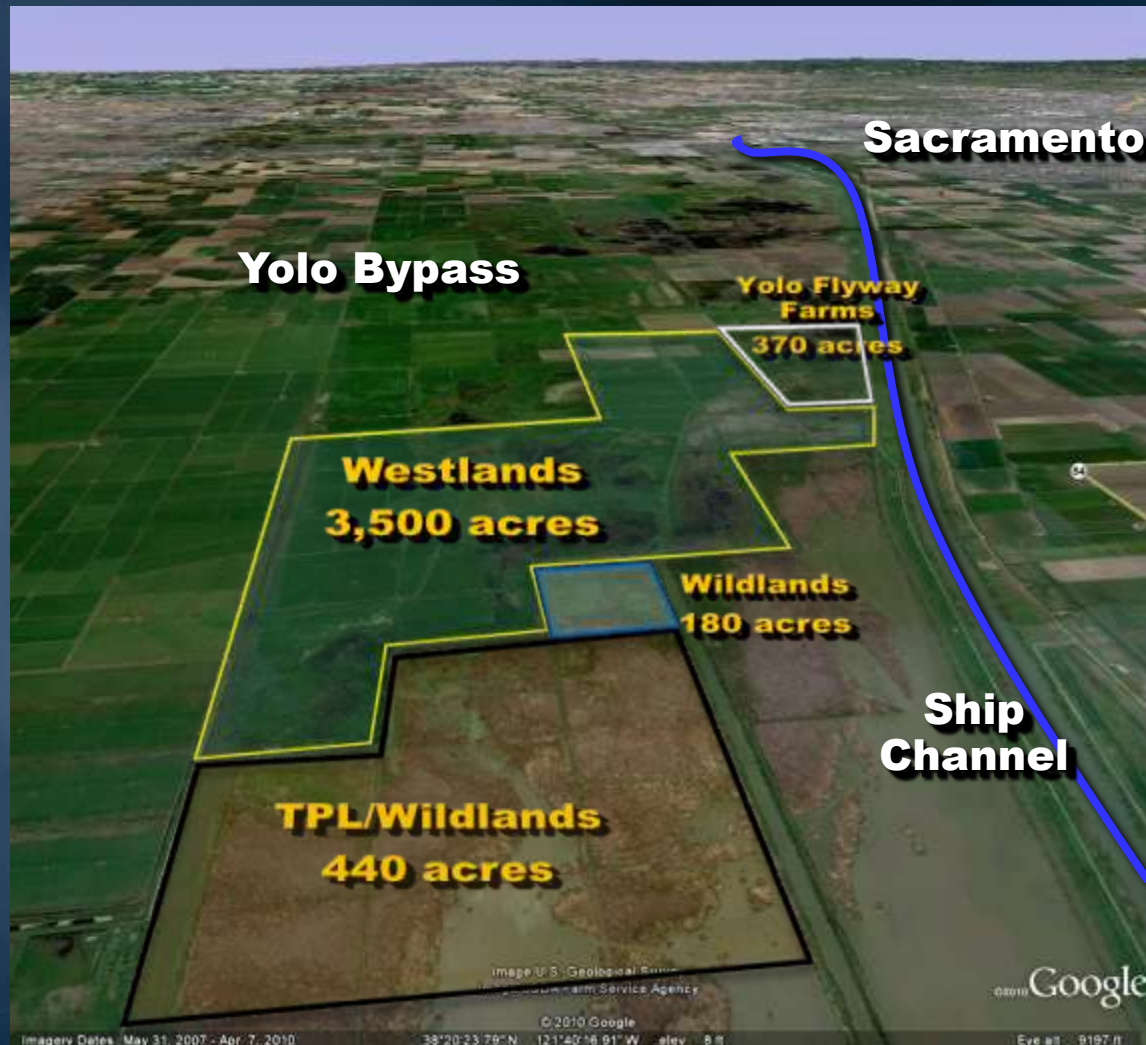


# Near-Term Habitat Restoration

## Future Opportunities



# Near-Term Habitat Restoration Future Opportunities



# The Delta



**Sacramento**

**Suisun Bay**

**Stockton**

**State & Federal  
Pumping Plants**

*California's Bay-Delta*