



Authorize two improvements projects at the Mills plant

Engineering and Capital Programs Committee

Item 7-3

August 17, 2009

Current Action

- Appropriate \$540,000 in budgeted funds
- Authorize preliminary design of Mills Modules 3 & 4 potable water safety stations & water line extensions
- Authorize preliminary design of Mills industrial wastewater handling facilities improvements

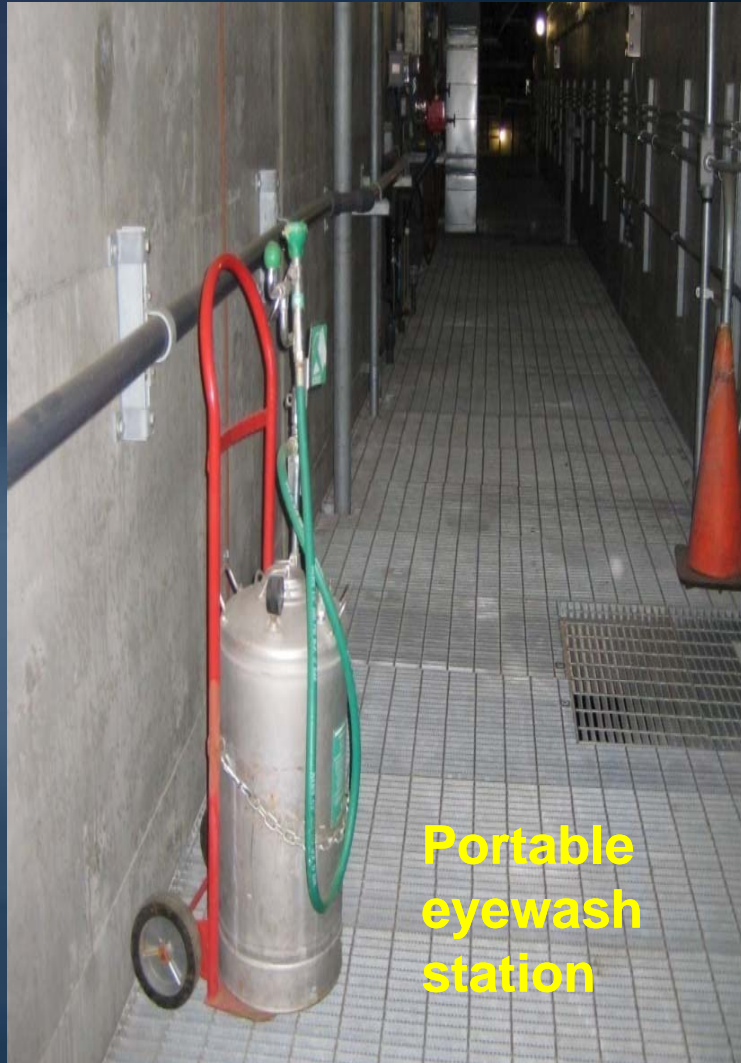
Metropolitan Treatment Plants



Project Locations



Modules 3 & 4 Piping Galleries



- Background
 - Constructed in 1996
 - Emergency equipment in galleries not included in original design
 - Staff wear protective gear
 - 6 portable eyewash stations provided
 - No deluge shower stations
- Current concern
 - No alarm to Control Room to signal emergency help for injured

Modules 3 & 4 Safety Stations – Preliminary Design



- Scope
 - Add hard-piped emergency eyewash & deluge stations in galleries
 - Extend existing potable water lines into galleries & to new safety stations
- Preliminary design by Met staff

Requested Funds - Modules 3 & 4 Safety Stations

Owner Costs	\$86,000
Studies & Prelim. Design	\$98,000
Incidental, Materials & Supplies	\$10,000
Professional / Technical Services	\$0
Contracts	\$0
Remaining Budget	\$22,000
Total	\$216,000

Industrial Wastewater Handling - Preliminary Design



**6,000-gal
FRP tanks**

**20,000-gal
steel tanks**

● Background

- Current system not reliable
- Disposal options limited & off-hauling expensive -- no capability to discharge to sewer

● Scope

- Replace unlined steel tanks
- Add pumping station & connection to sewer
- Improve monitoring & controls

● Preliminary design by Met staff



Unlined steel tanks

Requested Funds - Industrial Wastewater Handling

Owner Costs	\$108,000
Studies & Prelim. Design	\$198,000
Incidental, Materials & Supplies	\$6,000
Professional / Technical Services	\$0
Contracts	\$0
Remaining Budget	\$12,000
Total	\$324,000

Total Requested Funds

Owner Costs	\$193,000
Studies & Prelim. Design	\$297,000
Incidental, Materials & Supplies	\$16,000
Professional / Technical Services	\$0
Contracts	\$0
Remaining Budget	\$34,000
Total	\$540,000

Schedules



Board Action



Preliminary Design



Final Design

Board Options

- Option #1
 - Adopt the CEQA determinations
 - Appropriate \$540,000 in budgeted funds
 - Authorize preliminary design of Mills Modules 3 & 4 potable water safety stations & waterline extensions
 - Authorize preliminary design of Mills industrial wastewater handling facilities improvements

Board Options

● Option #2

- Adopt the CEQA determinations
- Appropriate \$216,000 in budgeted funds
- Authorize preliminary design of Mills Modules 3 & 4 potable water safety stations & waterline extensions
- Do not authorize preliminary design of Mills industrial wastewater handling facilities improvements

● Option #3

- Do not proceed with the 2 projects

Staff Recommendation

- Option #1