

41084

OCT 11 1994



**MWD**

METROPOLITAN WATER DISTRICT OF SOUTHERN CALIFORNIA

*Karen E. Duff*  
EXECUTIVE SECRETARY

September 20, 1994

To: Board of Directors (Engineering and Operations Committee--  
Information)  
From: General Manager (Special Committee on Water Quality and  
Environmental Compliance--Information)  
Subject: Member Agency Applied Research Coordination Program

Report

In recent years a proliferation of water quality applied research has occurred throughout the water industry, primarily in anticipation of more stringent regulations. This increased activity has produced much-needed information that has influenced the regulation-negotiation process as well as providing utilities the tools to comply with more stringent water quality standards. However, one unfortunate potential of this increased activity is duplication of applied research.

Coordination of applied research efforts is needed to allow Metropolitan and its member agencies and subagencies to learn of on-going and completed work and to build upon what others have completed. To prevent costly duplication of effort and to ensure that limited resources are expended most effectively, a program to coordinate research among Metropolitan, member agencies, subagencies, universities, and other organizations and agencies in Southern California is needed.

The first phase of this two-phase program involves immediate implementation of short-term applied research coordination over the next one to two years. It includes components such as a survey of on-going, completed, or planned applied research activities in member agencies and subagencies, a newsletter covering applied research activities, a forum for presentation of papers covering on-going or completed applied research, and creation of an information repository of published and unpublished literature documenting applied research activities. Also, integrated research efforts would be conducted to better position Metropolitan and member agencies to obtain grant monies for research.

The second phase of the program includes components of the first phase and adds the formation of a

long-term work group (a Southern California drinking water research association). This work group would be comprised of personnel from Metropolitan, member agencies and subagencies, universities, organizations, wastewater agencies, and reclaimed water agencies. During the second phase of the program, Metropolitan and member agencies would seek outside funding to subsidize elements of the program. In the second phase, computer communication may be implemented between Metropolitan, member agencies and other organizations to facilitate dissemination of information.

Personnel who would be involved in the program include individuals from Metropolitan's Water Quality Division, organizations and agencies described above, the National Water Research Institute (NWRI), American Water Works Association Research Foundation (AWWARF), AWWA Water Industry Technical Action Fund (WITAF), and the Water Environment Federation (WEF). Figure 1 presents a project organization chart for the applied research coordination program.

Possible areas of applied research that may be shared between Metropolitan and other participating organizations and agencies are indicated in Table 1. A tentative schedule for the first 8 months of the program is presented in Figure 2.

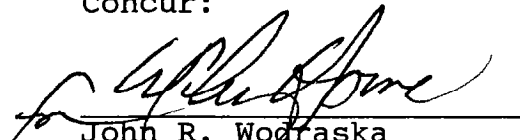
#### Recommendation

For information only.

John R. Wodraska  
General Manager

By Mark D. Beuhler  
Mark D. Beuhler  
Director of Water Quality

Concur:

  
John R. Wodraska  
General Manager

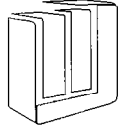
TST:wt

O:\BOARD\BDLTRRC.doc

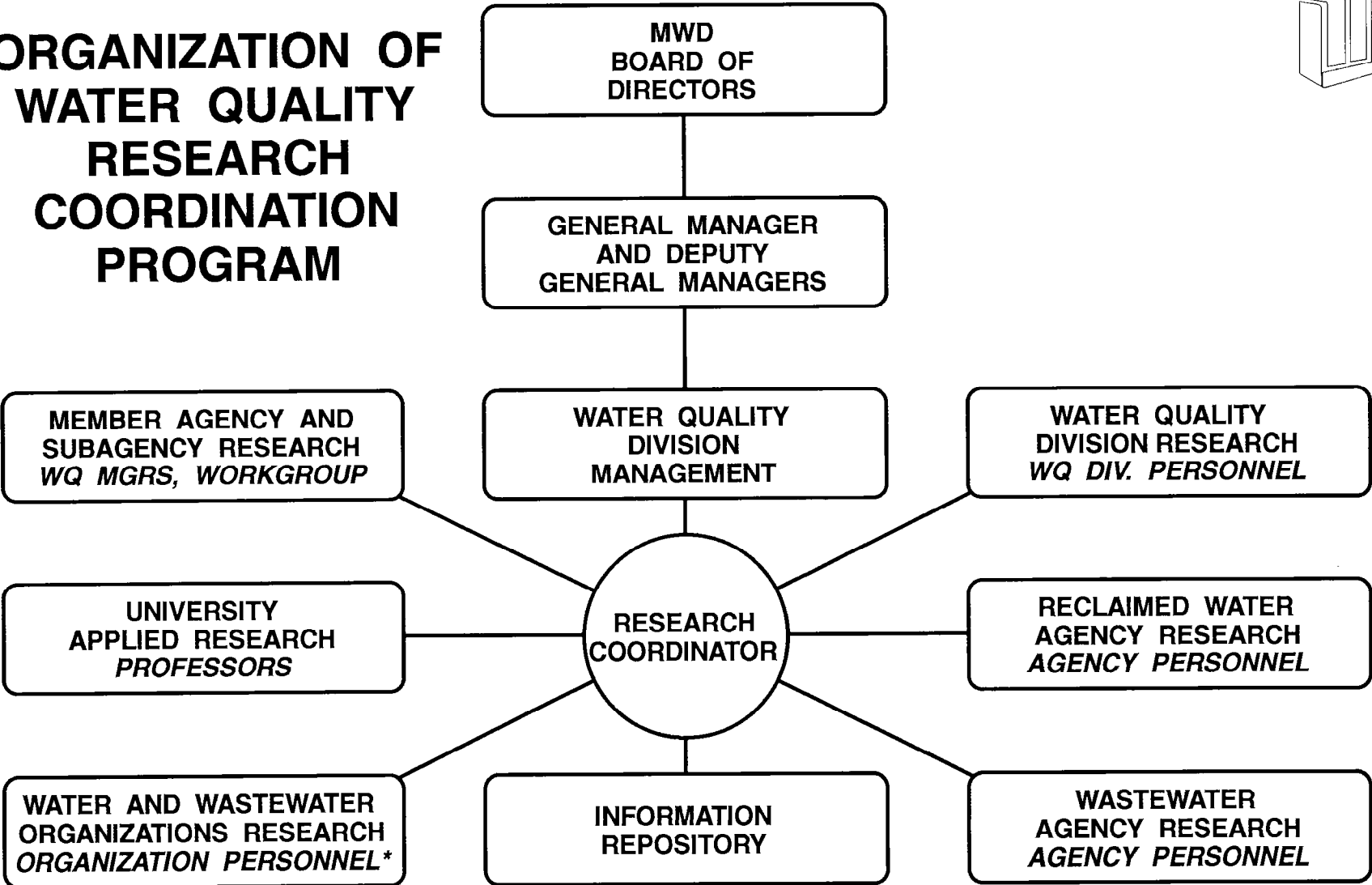
Attachments

**FIGURE 1**

PRGORG2Z.PRE P:\LABEXPAN 8/28/94



**ORGANIZATION OF  
WATER QUALITY  
RESEARCH  
COORDINATION  
PROGRAM**



\*Organizations include AWWARF, AWWA / WITAF, NWRI, and WEF

FIGURE 2

SKEDUL2-PRE PLANEXPAN 9/19/94

<b>TENTATIVE SCHEDULE</b>												
	1994					1995						
	J	F	M	A	M	J	J	A	S	O	N	D
<b>INFORMATIONAL LETTER TO MWD BOARD OF DIRECTORS</b>												
<b>SURVEY MWD MEMBER AGENCIES AND SUBAGENCIES</b>												
<b>SURVEY UNIVERSITIES, WASTEWATER AGENCIES, RECLAIMED WATER AGENCIES, ORGANIZATIONS (NWRI, AWWARF, etc.)</b>												
<b>BEGIN PRINTING NEWSLETTER</b>												
<b>BEGIN FORMING LONG-TERM "SOUTHERN CALIFORNIA DRINKING WATER APPLIED RESEARCH ASSOCIATION"</b>												
<b>CONDUCT FIRST APPLIED RESEARCH FORUM</b>												

41084

**TABLE 1**

<b>POSSIBLE COMMON AREAS OF APPLIED RESEARCH</b>
<b>▶ MEMBRANES</b>
<b>▶ GROUNDWATER REMEDIATION AND CONTAMINANT REMOVAL</b>
<b>▶ DISINFECTANT / DISINFECTION BY-PRODUCT REGULATIONS</b>
<b>▶ ARSENIC REMOVAL</b>
<b>▶ DESALINATION</b>
<b>▶ RECLAIMED WATER</b>
<b>▶ COLOR REMOVAL</b>
<b>▶ RADON TREATMENT</b>
<b>▶ TASTE-AND-ODOR REDUCTION</b>
<b>▶ OZONE / PEROXONE</b>
<b>▶ CONVENTIONAL TREATMENT UNIT PROCESS STUDIES</b>
<b>▶ GRANULAR ACTIVATED CARBON/POWDERED ACTIVATED CARBON</b>
<b>▶ ALTERNATIVE DISINFECTANTS</b>
<b>▶ ALTERNATIVE COAGULANTS (i.e., POLYALUMINUM CHLORIDE)</b>
<b>▶ NEW CHEMISTRY ANALYTICAL TECHNIQUES</b>
<b>▶ NEW MICROBIOLOGICAL ANALYTICAL TECHNIQUES</b>