



MWD

METROPOLITAN WATER DISTRICT OF SOUTHERN CALIFORNIA

B.

Office of Board of Directors

October 26, 1992

To: Board of Directors (Executive Committee--Action)
From: Chair-Elect Michael Gage
Subject: Request Approval of Additional Vice Chair

Report

I have given some thought to improving the flow of communication within the Board of Metropolitan and to the Boards of its member agencies. As a possible solution to this problem, I am seeking your approval to increase the number of Vice Chairs from three to four.

Each of the Vice Chairs will be designated as the "communicator" for a specified region. Please see two suggested regional breakouts attached hereto. Also attached is a map showing the boundaries of each member agency. If you have additional suggestions or preferences as to regions, please let me know. Vice Chairs will serve as "communicators" responsible for maintaining contact with Board members, and member agencies within their designated region, reporting to the Executive Committee potential problems, mutual interests, and especially to gain strong support for the positions of Metropolitan's Board.


I would appreciate receiving additional input on how communications can be strengthened and improved in the very near future.

I greatly appreciate your vote of confidence, and will be working with each of you, individually and collectively, to ensure Metropolitan continues in its role as the leader on water and water-related issues not only statewide, but nationally. To accomplish this goal, your support is essential.

Attachment B shows changes from existing Administrative Code provisions by strikeouts and underlining.

Recommendation

That Metropolitan Water District Administrative Code Sections 2200 and 2202 be amended to read as shown in Attachment A.



Michael J. Gage

Attachments

PROPOSED REGIONAL AREAS

Your Suggestions

ALTERNATIVE I

ALTERNATIVE II

ALTERNATIVE III

ALTERNATIVE IV

<u>Proposed Regions</u>	<u>Percent of Total</u>
Burbank	0.92
Calleguas	3.44
Chino Basin	3.53
Eastern	2.16
Foothill	0.55
Glendale	1.24
Pasadena	1.01
San Fernando	0.08
San Marino	0.20
Three Valleys	2.75
Upper San	3.81
Western	<u>2.96</u>
	22.65
Anaheim	1.82
Coastal	3.11
Fullerton	0.80
MWDOC	12.90
Santa Ana	<u>1.35</u>
	19.98
Los Angeles	22.12
San Diego	15.21
Beverly Hills	1.06
Central Basin	6.13
Compton	0.16
Las Virgenes	0.96
Long Beach	2.18
Santa Monica	1.08
Torrance	1.29
West Basin	<u>7.18</u>
	20.04

<u>Proposed Regions</u>	<u>Percent of Total</u>
Burbank	0.92
Calleguas	3.44
Chino Basin	3.53
Foothill	0.55
Glendale	1.24
Pasadena	1.01
San Fernando	0.08
San Marino	0.20
Three Valleys	2.75
Upper San	<u>3.81</u>
	17.53
Anaheim	1.82
Coastal	3.11
Fullerton	0.80
MWDOC	12.90
Santa Ana	<u>1.35</u>
	19.98
Los Angeles	22.12
Eastern	2.16
San Diego	15.21
Western	<u>2.96</u>
	20.33
Beverly Hills	1.06
Central Basin	6.13
Compton	0.16
Las Virgenes	0.96
Long Beach	2.18
Santa Monica	1.08
Torrance	1.29
West Basin	<u>7.18</u>
	20.04

<u>Proposed Regions</u>	<u>Percent of Total</u>
Burbank	0.92
Calleguas	3.44
Chino Basin	3.53
Foothill	0.55
Glendale	1.24
Pasadena	1.01
San Fernando	0.08
San Marino	0.20
Three Valleys	2.75
Upper San	<u>3.81</u>
	17.53
Anaheim	1.82
Coastal	3.11
Fullerton	0.80
MWDOC	12.90
Santa Ana	<u>1.35</u>
	19.98
Los Angeles	22.12
Eastern	2.16
San Diego	15.21
Western	<u>2.96</u>
	20.33
Beverly Hills	1.06
Central Basin	6.13
Compton	0.16
Las Virgenes	0.96
Long Beach	2.18
Santa Monica	1.08
Torrance	1.29
West Basin	<u>7.18</u>
	20.04

<u>Proposed Regions</u>	<u>Percent of Total</u>
Burbank	0.92
Calleguas	3.44
Chino Basin	3.53
Foothill	0.55
Glendale	1.24
Pasadena	1.01
San Fernando	0.08
San Marino	0.20
Three Valleys	2.75
Upper San	<u>3.81</u>
	17.53
Anaheim	1.82
Coastal	3.11
Fullerton	0.80
MWDOC	12.90
Santa Ana	<u>1.35</u>
	19.98
Los Angeles	22.12
Eastern	2.16
San Diego	15.21
Western	<u>2.96</u>
	20.33
Beverly Hills	1.06
Central Basin	6.13
Compton	0.16
Las Virgenes	0.96
Long Beach	2.18
Santa Monica	1.08
Torrance	1.29
West Basin	<u>7.18</u>
	20.04

ATTACHMENT A

§ 2200. Establishment of Offices.

There shall be one office of Chair and one office of Secretary of the Board. There shall be four offices of Vice Chair of the Board, including that provided for in Section 59 of the Metropolitan Water District Act, each office to be of equal status.

§ 2202. Selection of Officers.

The Chair shall be nominated by the Special Nominating Committee or from the floor and elected in even-numbered years at the October meeting of the Board. Two of the Vice Chairs and the Secretary shall be nominated by the Special Nominating Committee or from the floor and elected in even-numbered years at the November meeting of the Board and two Vice Chairs shall be elected in odd-numbered years at the November meeting of the Board; provided, that upon creation of the fourth office of Vice Chair, if such office is created prior to December 31, 1993, the Board shall elect one additional Vice Chair to serve for the period ending December 31, 1993.

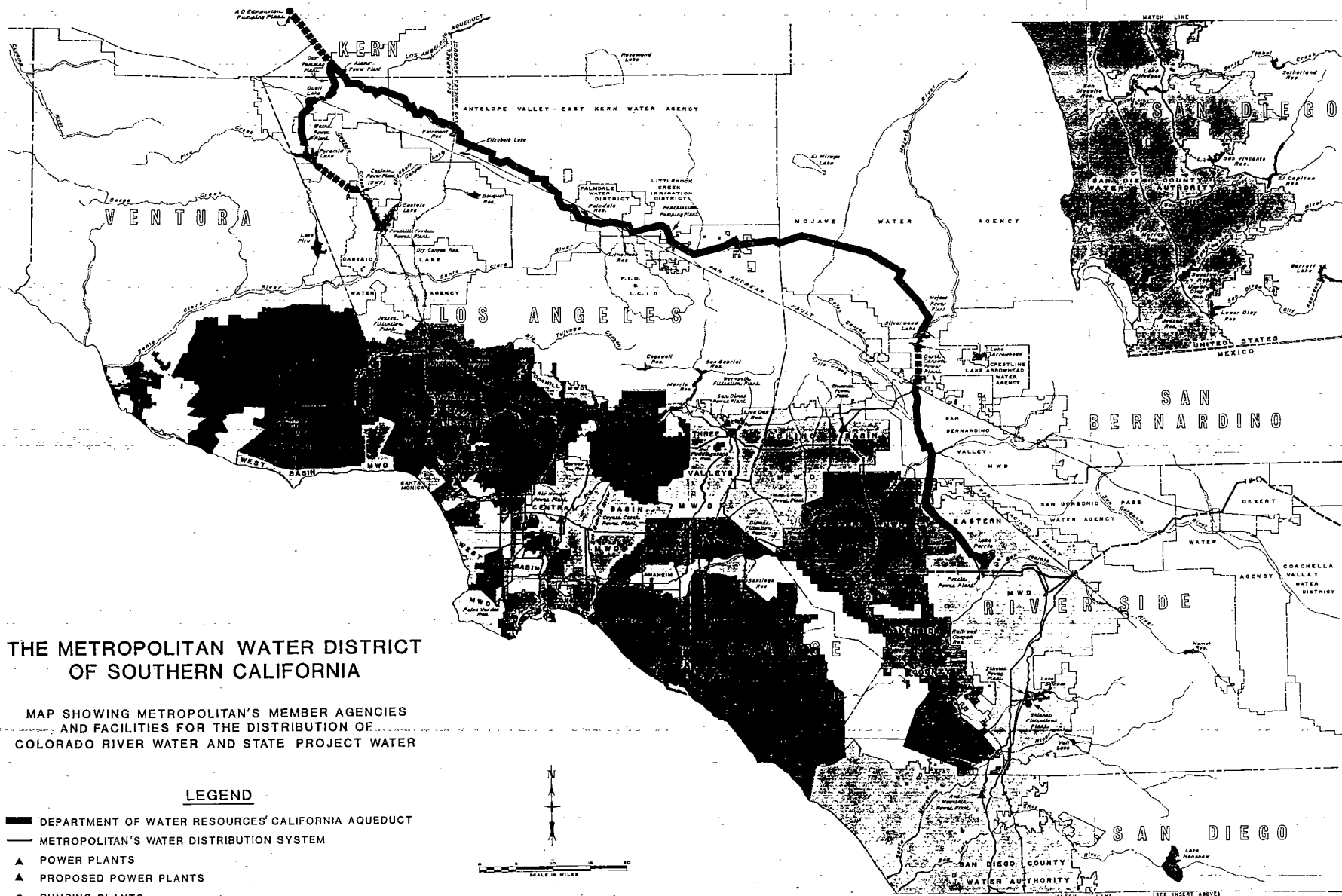
ATTACHMENT B

§ 2200. Establishment of Offices.

There shall be one office of Chair and one office of Secretary of the Board. There shall be ~~three~~ four offices of Vice Chair of the Board, including that provided for in Section 59 of the Metropolitan Water District Act, each office to be of equal status.

§ 2202. Selection of Officers.

The Chair shall be nominated by the Special Nominating Committee or from the floor and elected in even-numbered years at the October meeting of the Board. Two of the Vice Chairs and the Secretary shall be nominated by the Special Nominating Committee or from the floor and elected in even-numbered years at the November meeting of the Board and ~~one Vice Chair~~ two Vice Chairs shall be elected in odd-numbered years at the November meeting of the Board; provided, that upon creation of the fourth office of Vice Chair, if such office is created prior to December 31, 1993, the Board shall elect one additional Vice Chair to serve for the period ending December 31, 1993.



**THE METROPOLITAN WATER DISTRICT
OF SOUTHERN CALIFORNIA**

MAP SHOWING METROPOLITAN'S MEMBER AGENCIES
AND FACILITIES FOR THE DISTRIBUTION OF
COLORADO RIVER WATER AND STATE PROJECT WATER

LEGEND

- DEPARTMENT OF WATER RESOURCES' CALIFORNIA AQUEDUCT
- METROPOLITAN'S WATER DISTRIBUTION SYSTEM
- ▲ POWER PLANTS
- ▲ PROPOSED POWER PLANTS
- PUMPING PLANTS
- WATER FILTRATION PLANTS

